

2022



World Vision  
Vanuatu

# IMPACT REPORT IMPACT





**NOT ALL DISABILITIES ARE**  
3 December 2012  
INTERNATIONAL DAY BEING CELEBRATED BY PEOPLE WITH DISABILITY

Pacific Community  
COMMUNAUTÉ DU PACIFIQUE  
MINISTRE DE LA SANTÉ &  
ÉPARGNE ÉCONOMIQUE

World Vision  
Vanuatu

World Vision



In March 2022, Vanuatu experienced its first community outbreak of COVID-19. Even though we had global experience to draw from, this was still a very challenging time for the nation and our team. I am proud of the way in which the World Vision team chose to pivot in able to protect others and still deliver quality programming in particularly challenging circumstances. It is with great pleasure that I share our 2022 Impact Report, which serves as a testimonial to how we rose to the challenge and continued our excellent work in supporting children and families across Vanuatu during a time in which pandemic-related barriers magnified many of the development issues that our programming seeks to address.

In 2022, our team was composed of 94 employees: 90 ni-Vanuatu staff members and 4 international colleagues on local salaries. Our international colleagues contribute a deep understanding of our global donor landscape and its complex reporting requirements. Together, this team delivered on USD 5 million in programming across 4 Vanuatu provinces in financial year 2022 working in **inclusive water and sanitation facilities**, reinforcing our

commitment to **reducing violence** against women and children, **strengthening household livelihoods and resilience**; and **responding to disasters** including COVID-19.

Our work in our Inclusive WASH portfolio was included in **peer-reviewed journal articles, 3 presentations at National and International Symposiums** and **1 international poster presentation** at the Water, Wash & Futures Conference reaching over 1,200 people. In the field, 256 people with disabilities benefitted from improved sanitation solutions and were supported with training that targeted carers of people with disabilities.

We continued our faith-focussed work through the Relationship Education and Choices and Healing (**REACH**) **Centre** which supports families to end domestic violence. The Centre has continued to grow programming, evolving with the needs and response from the Vanuatu community with the development of “**Police Be the Change**” program with 103 police recruits, middle managers and their families.

As the devastating consequences of climate emergencies and disasters grow, our work in our

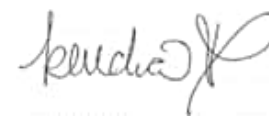
Climate Resilient Livelihoods portfolio was relevant more than ever. Our team worked across **3 projects with urban and rural communities**, with particular focus on young people, women and farmers, to put into practice their work in resilience building and discover new pathways for families in diversifying household income to lessen the impacts of future disasters.

Our partnership with Ministry of Health and the Respond Global **HELPR-1 medical response** ship supported the increased access to COVID-19 vaccines, boosters, and a range of other health support services as well as the restock of essential health supplies in Torba province, the most remote province in Vanuatu. We expanded **Famili I Redi** training to rural communities, ensuring greater access to information and opportunities for families to benefit from labour mobility experiences.

Our impactful work in 2022 is a testament to our strong local and international partnerships who I thank for their collaboration. The results and achievements of our work are possible with the support of our donor partners who have enabled us to continue to work alongside communities to improve the lives of girls, boys, women and men, with and without disabilities, in Vanuatu.

# IMPACT REPORT 2022

## FOREWORD



**Kendra Gates Drousseau**  
Country Director











## We are World Vision

World Vision has been partnering with communities in Vanuatu for over 40 years, working with over villages in over half of the provinces across Vanuatu.

World Vision is an international partnership of Christians and we are driven by our desire to ensure that every boy and girl has what they need to grow in mind, body and spirit. Our 93 staff in World Vision Vanuatu and World Vision's more than 37,000 staff worldwide work hard to empower children to live lives filled with joy, become all Jesus created them to be and to go further than they could ever have imagined.

Guided by more than 70 years of experience and expertise worldwide, our dedicated staff employ proven, effective development and relief practices to empower communities to become self-sufficient and bring real, lasting change. World Vision has been operating in Vanuatu since the early 1980's and we currently have three Area Programs located on the islands of Tanna, Santo (also serving Torba province) and Efate and grown to support civil society organisations through active partnerships with private sector businesses, local NGOs and church groups.

As a leading global partner, we work alongside supporters, stakeholders, families and communities to transform lives and bring hope and, as a result, all our lives are enriched. Together, with our partners we have positively impacted the lives of more than 117,400 people in Vanuatu across all our programs, and 200 million vulnerable children around the world.

We are privileged to serve and work to see relationships restored and communities transformed, all as a reflection of God's unconditional love. And, we humbly acknowledge that without the goodness of God and the generosity of donors, we would not be able to do what we do.





# GEOGRAPHIC FOOTPRINT

World Vision has offices in Port Vila, Luganville, Sola, and Isangel serving SHEFA, SANMA, TORBA, and TAFEA provinces

20+ Projects across 5 SECTORS



Humanitarian Response



Inclusive WASH



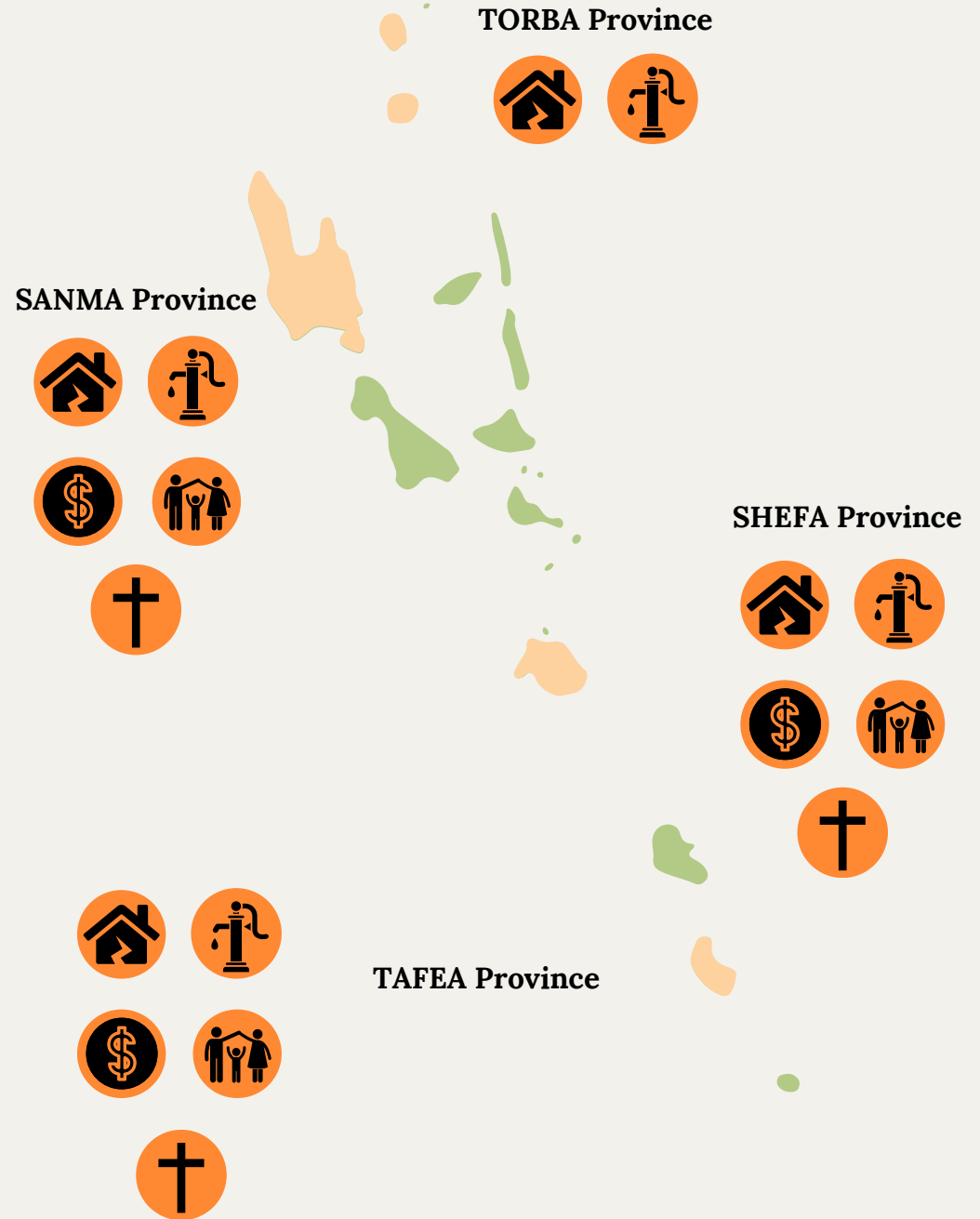
Ending Violence



Resilient Livelihoods



Faith and Development





**Working with local partners makes  
our programs sustainable and  
ensures they are relevant to  
Vanuatu's changing needs**



**"Police Be the Change Program" run in partnership with the Vanuatu Police Force and  
the Australia Federal Police**



# WORLD VISION VANUATU'S Priority Sectors

World Vision Vanuatu's priority sectors are **inclusive water, sanitation and hygiene (WASH); ending violence against women and girls; climate resilience and livelihoods;** and **humanitarian and COVID-19 responses.** We work closely with faith and community leaders and families as well as a number of government ministries and departments to deliver our programs. We also continued our strong working partnerships with Vanuatu Society for People with Disability (VSPD), Vanuatu Disability Promotion and Advocacy Association (VDPA), and Wan Smolbag/Rainbow Theatre and grew our partnership with the Vanuatu Police Force (VPF).

Utilising evidence to inform best practice, **Laetem Dak Kona (LDK)** WASH programs were shown to support the entire household of someone living with disability. Over **1,500 community members** across 3 provinces were supported with accessible sanitation solutions with practical on-site training using audio and visual guides. As a result, **42 disability inclusive ventilated pit latrine toilets** for community and household use were constructed.

Throughout the pandemic, our continued commitment to ending violence against women and children has seen exponential growth in the capabilities of the REACH Centre with **25 newly trained faith and community leaders.** Trained staff on Efate and Santo delivered the '**Men Be the Change**' (MBC) program with 157 men in 2022. The "**Police Be the Change**" program in partnership with the VPF result in improved articulation by police about a **victim centred response.** Nearly **70** spouses of participants in the MBC program, were supported with the '**Leftemap Mama**' program exploring the different forms and tactics of family and domestic violence and the impact of violence on family members (especially children).

Despite COVID-19 lockdowns and economic hardships, our climate resilient livelihoods portfolio supported access to savings and loans to over **500 men, women and young people** through **Savings for Transformation** groups. We worked with **170 young people** through Innovation, Motivation, Participation, Action, Community (**IMPACT**) **teen clubs** to build skills needed going into adulthood. We strengthened nutritional awareness through the **Melanesian Rural Market & Innovation Driven Development (MERMAID)** and improved small business acumen. In addition to this, the **PIRAS (Pacific Island Rural Agriculture Stimulus)** program supported smallholder farmers with tools and training to produce higher quality and quantity yields in market-driven sectors.

World Vision provided support the SANMA province Provincial Emergency Operations Centre and Area Council Disaster Committees with disaster risk reduction education and planning, on-going recovery from TC Harold, the first community outbreak of COVID-19 occurred in March 2022, pivoting our humanitarian response from disseminating public messaging to also **supporting the vaccine roll out.** Simultaneously, we prepared labour migrants and families to maximise the positive impact of participation in labour mobility through **Famili i Redi** program and **Haos Blong Yumi** with 84% of migrant workers reportedly now consulting more closely with their partner on financial decision making.





# Our National Impact 2022



**62,181**

**beneficiaries in FY 2022**

**14**

**local partnerships, including 6 national government departments and 3 provincial departments**



**4**

**peer-reviewed academic articles produced**



**36**

**communities receiving facilitated learning on disability inclusion based on results from the first of its kind Water, Women and Disability survey**

**12**

**water systems designed, 6 direct gravity fed under construction, 3 solar pump systems to be constructed**



**100%**

**of participants in the Leftemap Laef training for caregivers of people with disabilities had increased understanding of disability**



# Our National Impact 2022

3

Provincial  
Emergency  
Operation Centres  
were supported to  
increase  
operational  
capacity



2,000+

people in TAFEA benefited from  
the distribution of hand tools,  
seeds, and large agricultural  
machinery to support ground  
preparation and planting

5

market houses in TAFEA  
constructed or rehabilitated,  
increasing market access



20,000+

shares of 5 audio books  
featuring tips for families  
working from home during  
COVID-19 restrictions



203

faith leaders involved in  
Peer Support Group  
meetings and  
workshops

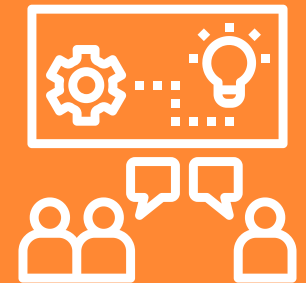


80%

of target community  
members interviewed from  
REACH programs reported a  
reduction in violence in their  
homes

10

pre-departure and  
reintegration  
workshops run for  
seasonal workers  
and their families









# Child Well-being

We are a child-focused organization invested in using evidence based approaches to improving the quality of children's lives. We combine our in house technical expertise, development and disaster management work towards holistic well-being of children with a systems- strengthening approach that recognizes the child lives within the context of family, community, and society.

World Vision's primary goal is "the sustained well-being of children within families and communities, especially the most vulnerable." World Vision views the well-being of children in holistic terms: healthy individual development (involving physical, social and mental dimensions), positive relationships and a context that provides safety, social justice, and participation in civil society.

At World Vision Vanuatu we are deepening our commitment to the most vulnerable children and are adapting our programming to be more child-focused. Child focused interventions and messaging are engrained in our ending violence and inclusive portfolios, including with preparations for research and the collection of robust evidence to strengthen our strategies. In 2022, we embarked on a journey with local partners to research the well being of children in Vanuatu. This we hope will produce transformational development that is community-based and sustainable, and especially focused on the needs of the most vulnerable children.

Through our work, World Vision Vanuatu has been able to impact the lives of more than 70,000 children across the country in 2022, through better access to inclusive water, sanitation and hygiene, greater protection from violence, increased livelihood opportunities for their families and targeted support in times of disasters including in our response to COVID-19.





# INCLUSIVE WASH



Over 2,200 people reached in 2022

**602**

Community members, including both women and girls as well as men and boys, were reached by 30 Menstrual Health & Hygiene Trainings



**17**

Communities reached through the design and ongoing construction of direct gravity fed water systems, solar pump systems and Community Drinking Water Safety and Security Plans (DWSSPs)



**398**

People with disabilities and their carers supported with Incontinence and Menstrual Health & Hygiene Training and distribution of Disability Inclusive Care Kits and Disaster Preparedness and Planning Training





# IMPACT STORY

## INCLUSIVE WASH



Wai Nui Project

The tough physical environment of Vanuatu exacerbates the challenges faced by people with disabilities, including **limited access to basic sanitation services**. As is common in many households in Vanuatu, toilets are typically not adjoined to the house, meaning that in many circumstances there are long distances to the toilets without a safe joining pathway and not user friendly particularly for individuals with disabilities.

Meet Collette\*, a female living in Tanna who said ***“There was no proper toilet facilities in place. When we wanted to use the toilet we would just go into the bush (forest/gardens) and do our business. Once that was done, we never wash our hands. Life was very hard.”*** In the past, people in her community had to walk down a steep-sided creek (water source) several times a day, filling water in bamboo to transport water back to their homes for sanitation use.

Violet\* who lost her eye as a result of a gardening accident with an infected wound and could not receive medical care shared her story of her difficulties with toilet infrastructure. With reduced vision, she felt unsafe going to the toilet in the bush particularly at night and at risk of falling into nagalat, a type of poison ivy, and animal excrement.

Recently these women were selected to get a VIP inclusive toilet through the Wai Nui Inclusive WASH programme, accompanied by training aimed at educating carers for people with disabilities.

Collette has learnt a lot of things from WVV and has instilled in her children the important things they need to do every day to ensure they stay healthy. ***“I went to a training run by WVV where we learnt about the tippy-tap and the importance of washing hands after going to the toilet. Before when the children would get sick, I would need to take them and walk a long distance to get to the hospital and we would need to stay in the hospital for a few days till they got better before we came back home. Now that we have tippy taps outside the toilets and the children know that they have to wash hands when they wake up in the morning, they don’t get sick”.***

Violet also shared that ***“Since WVV built the toilets in the community, I’ve noticed that health of the whole community has improved, especially the children. I see that we don’t have to go to the health centre as much. Before we had people going to get their sores looked at, but after Carer’s Training, we now use soap more often for bathing and washing our hands. People aren’t needing to go to the health centre.”***

\*Names changed to protect identity



# ENDING VIOLENCE & THE REACH CENTRE



Over 2,000 people reached in 2022

**1,643**

community members reached through the training of 60 faith and community leaders to provide pastoral support and COVID safe and family protection messaging



**5**

joint gender foundations workshops to help identify and respond to incidences of family and domestic violence



**78%**

of female recruits in the *Police Be the Change* program now feel equipped to keep themselves and their children safe



**16**

programmes were delivered with 225 men in detention (prison), parolees, faith and community leaders, community members and Corrections Officers; and their spouses.





# IMPACT STORY

## ENDING VIOLENCE AND THE REACH CENTRE



Pastor Rona Kalotrib

Pastor Rona is a female faith leader in a largely male dominated sector but she overcomes the challenges of an established hierarchy with passion, commitment, drive and strength. Rona is a strong advocate and supporter of women to have access to economic opportunity, gender equality and lives free from violence.

Born in Solomon Islands, relocated to Vanuatu and married to a man from Efate, Pastor Rona says *“I grew up in the Solomon Islands when I travelled to Vanuatu I felt very accepted and cared for despite any differing cultural beliefs”*. Rona went on to say that there is very high levels of violence experienced by women and children in the Solomon Islands and is much the same here in Vanuatu. Rona has also observed similar attitudes in the two countries where boys and men are treated with more respect than girls and women.

Pastor Rona has been a pastor with the Assemblies of God for over 8 years. Since joining World Vision Vanuatu (WVV), in year two of the project, ‘Men Be the Change’ (MBC), Rona reflected that her leadership qualities have improved greatly. ***“It has also helped me to also look after women well in my congregation and help them see the value God has for them.”***

Pastor Rona is a Community Faciliator of the MBC programme, an intensive 12 week group program supporting men to end family and intimate partner violence as well as increasing the safety of women and children by working with men who use violence against women. Rona has used the knowledge and skills she has learnt as a facilitator in her interventions on pulpit, and with families at congregation and community level. **Rona specifically identifies her increased capacity in listening and communication with her family, congregation and community as skills she has acquired during her time in training with the project.**

Her own family has benefited from her newly acquired knowledge and skills and she is spending more quality time with her children and her own relationship is stronger and healthier.

***“My hope for MBC for the future is to be more deeply engaged in the communities. I also hope to see MBC in the government sectors for example education or people working with children. I would also like the programme to reach more women in the communitites to help them to be free from violence.”***



# CLIMATE RESILIENT LIVELIHOODS



Over 5,000 people reached in 2022

**769**

direct beneficiaries of the MERMAID program, focused on nutrition awareness & Savings for Transformation training



**1,019**

agriculture toolkits distributed to each households (4,974 direct beneficiaries) through PIRAS



**50**

tonnes of produce were transported to Port Vila (food values approximately 23,705USD was paid directly to 134 rural producers)



**63**

large agriculture tools distributed (28 renovators and 35 augers) to 7 Area council on Tanna island





# IMPACT STORY

## CLIMATE RESILIENT LIVELIHOODS



## MERMAID Project

Jimmy is a 22 year old with big dreams which he is determined to achieve, no matter the challenges he has encountered living in a remote community. He is one of 6, living with his parents and siblings in thatch roofed, bamboo walled house. Born with a speech impairment, Jimmy did not complete his formal education, but this has not stopped him from speaking his mind.

Jimmy's parents are subsistence farmers and what small excess crops they have, his mother would take to the market to sell. After helping his parents with the family garden for several years, he was allocated his own piece of land to plant his first garden two years ago, using the produce to sell at a local market and contribute to household costs.

In 2022, World Vision Vanuatu started working with Jimmy's community implementing the Melanesian Rural Market & Innovation Driven Development (MERMAID) project. The project works with the Alliance of Biodiversity International and the International Centre for Tropical Agriculture (CIAT) (The Alliance) to address the twin challenges of poor nutrition and low rural incomes in the Solomon Islands and Vanuatu.

The World Vision team worked with community members to set up an Inclusive Savings for Transformation savings group. The groups are designed to be inclusive in practice to ensure that the most disadvantaged and vulnerable, including women and people with a disability, to increase access to financial services and encourage participation in the local market economy.

Jimmy has been a faithful savings group member, putting his savings into the group each meeting. When the group closed its first cycle, Jimmy went home with 29,480vt (approx. \$380 AUS). During a follow up visit, Tom excitedly shared, ***"I have requested for a Loan and managed to get it. I have plans to set up my piggery farm and used the money to buy pig fence and had some community boys to help me build the fences. I now have 4 pigs in the fence and hopefully they will start breeding soon. I know pigs will make me more money so I decided to raise pigs too as additional to my current income source, selling produce at the market"***.

From selling his garden produce to now owning piggery farm, Jimmy is starting small but is one step closer to achieving his big dreams, and demonstrates the contribution people with disabilities are making to communities in Vanuatu.



# HUMANITARIAN RESPONSE



Over 11,000 people reached in 2022

**1,247**

people supported with integrated health services, including measles, malaria, COVID-19, dental/eye and reproductive health services



**303**

seasonal workers and their spouses attended Famili I Redi pre-departure trainings.



**226**

seasonal workers and a close family member attended Haos Blong Yumi reintegration trainings on cyclone-resilient house building





# IMPACT STORY

## HUMANITARIAN RESPONSE



Famili I Redi

While Vanuatu border closures, due to the COVID-19 pandemic, remained in effect, the country was increasingly feeling the economic strain as the tourism sector stagnated. Lack of alternative employment opportunities caused increasing numbers of Ni-Vanuatu women and men to consider overseas employment under the Pacific Australia Labour Mobility (PALM) scheme.

Mrs Murielle Meltenoven the Commissioner of the Vanuatu Labor Office confirmed, ***“Vanuatu is sending the greatest number of workers in the region to Australia and New Zealand.”***

But as 35-year-old David and many others have discovered, as appealing as the opportunity to travel abroad to earn a substantial amount of money sounds, overseas work can also present many challenges that if not addressed, can negatively affect individuals and families.

Lack of planning and preparation, culture shock, and, lack of support networks in Australia are among some of the challenges arising for seasonal workers and their families. These issues can result in the depletion of funds, inter-marital affairs, and criminal activities, and their occurrence is increasing as the number of people travelling to participate in labour mobility programmes continues to grow.

David says ***“I was not focused on a plan so as soon as I finished my contract and got back to Vanuatu, I would spend most of the money on alcohol and this resulted in my wife and I having terrible fights about bills, food and other responsibilities.”***

World Vision through funding from the Australian Government through the Australian Humanitarian Partnership and in partnership with the Vanuatu Department of Labor and the International Labor Organisation (IOM) conduct a comprehensive five-day pre-departure training with couples to help plan, budget and agree ways to ensure that the distance does not lead to them betraying their partners' trust and enable the opportunity of overseas work to be as beneficial for Vanuatu families as possible.

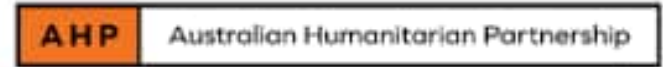
David and his wife attended these sessions, known as Famili I Redi, and remarked how so many things that he never thought about like communication and drawing up a budget were brought up. Smiling he adds, ***“After attending the training my wife and I have come up with a new plan on what to do when I am overseas which includes a budget target that we will be working on, being clear on our vision and of course a plan to communicate better. I know it will work because I can see how I could have avoided so many working trips to begin with.”***







# Our Partners



Government of the Republic of Vanuatu



Private donors and the Australian public via World Vision Australia





# World Vision<sup>®</sup>



## Vanuatu

World Vision is an international partnership of Christians whose mission is to follow our Lord and Saviour Jesus Christ in working with the poor and oppressed to promote human transformation, seek justice and bear witness to the good news of the Kingdom of God.

**Our vision for every child, life in all its fullness;  
Our prayer for every heart, the will to make it so..**

World Vision Vanuatu

Rue Artoi, Saralana Park, Po Box 247, Port Vila, Vanuatu Tel: +678 22161



<https://www.wvi.org/Vanuatu>



@WorldVisionVanuatu