

# SOMALIA

## East Africa Hunger Crisis Emergency Response

Mid-2017 Appeal

# KEY MESSAGES

- The humanitarian situation in the country continues to be dire with 6.2 million people in need of protection and humanitarian assistance – of which 4 million (60%) are children<sup>1</sup> (UNICEF, July 2017). The poor performance of the Gu (long) rains means the situation won't improve and the elevated risk of famine remains.
- Access and availability of food has slightly improved due to the increased humanitarian assistance, but the mortality rate and levels of acute malnutrition remain critical, particularly in rural pastoralist population and IDP camps. Over 1.4 million children are projected to be at a risk of acute malnutrition.
- More than half a million children are at risk of dropping out of school due to the hunger crisis. An estimated 304,000 school age children are among the 766,000 drought-displaced people<sup>2</sup>. This leaves children more vulnerable and is a barrier to education.
- Increased migration and drought induced internally displaced persons (IDPs) are putting a lot of pressure on the limited resources in urban settlements and IDP camps. An estimated 766,000 people, including 480,000 children have been displaced by the hunger crisis.
- Access to water, sanitation and hygiene (WASH) remains a challenge with over 4.5 million people in need. 56,628 cases of Acute Watery Diarrhoea (AWD) / Cholera with 809 deaths (CFR 1.4%) recorded since January 2017 to 2nd July. Out of these 53% are children under the age of 5.
- Over 5.5 million people are still in need of health services with nearly 12,336 suspected cases of measles reported since January, exceeding the 2016 caseload.
- Delivery of food assistance and life-saving health services to most vulnerable children and IDPs is being hampered by funding shortfall and the inaccessibility of some district in the Bay, Gedo, Lower Shabelle and Middle Jubba due to insecurity.

## RESPONSE OBJECTIVES

Goal: To alleviate immediate human suffering and strengthen the resilience and self-recovery capacity of drought affected communities, including displaced people, hosting communities and migrants, ensuring the right to life with dignity.

Expected Outcomes:

- Drought-affected communities, especially the most vulnerable children, have improved living conditions and access to basic goods and services
- Drought-affected communities have restored their livelihood and have better ability to manage future disasters

<sup>1</sup>UN OCHA Somalia Humanitarian Dashboard, June 2017 (issued on 18th July 2017)

<sup>2</sup>UNICEF Sitrep 30 June 2017

## THE CRISIS IN A NUTSHELL



**6.7 million**

people face starvation and elevated risk of famine if humanitarian assistance will not arrive on time



**1.4 million**

are acutely malnourished with over 275,000 affected by severe malnutrition



**5.5 million**

people require healthcare support



**4.5 million**

people require water and sanitation assistance



**766,000**

people have been displaced because of drought and conflict



**2 million**

are in need of protection from gender-based violence, child abuse and potential trafficking



**528,000**

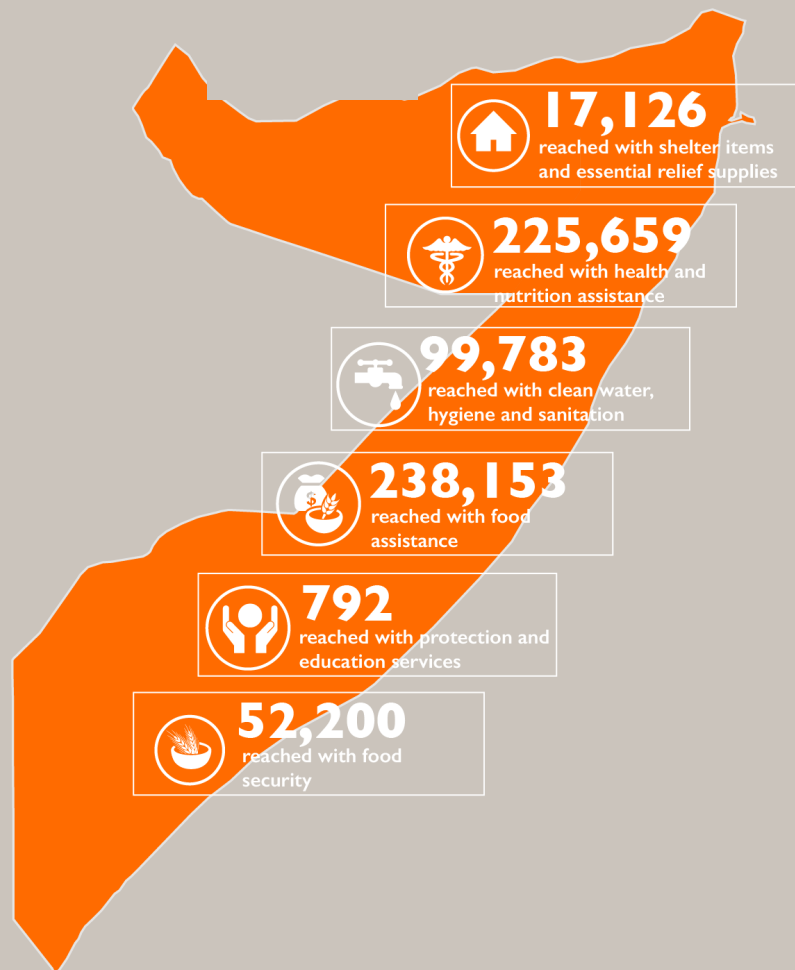
school age children are out of school education intervention

# RESPONSE ACHIEVEMENTS



**638,890** individuals reached in Somalia during the first six months of World Vision's 2017 Hunger Crisis response\*

World Vision's response has provided affected communities with:



\*some beneficiaries may have received in multiple sectors



# THE NEXT 6 MONTHS

**700,000** people targeted in Somalia with planned response programming during the next six months.

## PROPOSED INTERVENTIONS AND NEEDS



### **Food Assistance**

300,000 targeted

300,000 people are targeted as World Vision Somalia will continue ongoing support in the four regions, targeting districts considered to be in crisis or emergency. The programme will use three different modalities in delivering cash and food assistance. These include: value vouchers, cash transfer using smart cards and general food distribution.



### **Water, sanitation and hygiene services**

155,000 targeted

155,000 people are targeted as World Vision plans to chlorinate water sources, repair and rehabilitate water facilities, promote hygiene and sanitation education, explore and construct dams for rainwater harvesting.



### **Education**

65,000 targeted

World Vision plans to carry out school feeding, rehabilitate school infrastructure and provide writing materials, classroom furniture, teacher training and extra-curricular materials for a targeted 65,000 children in 18 schools in Waajid, Baidoa and other new expansion areas.



### **Health**

170,000 targeted

Working with the Ministry of Health, World Vision plans to scale up curative, promotional and preventive health services through the existing health posts and mobile clinics to 170,000 people. Medical supplies will also be prepositioned in new areas.



### **Nutrition**

175,000 targeted

Due to increased new admissions at the feeding and treatment centres, World Vision Somalia is aiming to reach 120,000 children and 55,000 pregnant and lactating mothers in its continuing integrated nutrition services including food assistance, livelihoods support, nutrition screening and nutrition education delivered through health facilities, mobile health units, schools, IDP camps and community groups in Puntland, Somaliland, Jubaland and South West state.



### **Protection**

35,000 targeted

World Vision will facilitate capacity building of a targeted 35,000 community leaders and service providers (health workers, teachers, government officials and religious leaders) in strengthening community-based protection mechanisms for the most vulnerable groups, especially women, children, persons with disabilities and the elderly. Special attention will be paid to Gender Based Violence (GBV) and child abuse cases that continue to increase, particularly in IDP camps.



### **Food Security and Livelihood Support**

191,000 targeted

World Vision aims to integrate recovery and resilience strategies in its food assistance programmes taking into consideration interventions that will support pastoralists and agro-pastoralists to rebuild their livelihoods. A targeted 75,000 people are expected to benefit from programs that include: distributing conditional and unconditional cash/ food vouchers, provision of seeds and farm inputs, offering agricultural training, establishing village lending and savings groups among displaced and host communities, supporting livestock surveillance and encouraging fodder development.



## OUR PROMISES

### We will ensure the most needy get the help they need

**BENEFICIARY SELECTION:** The beneficiary selection will be a participatory community-led process with facilitation by project staff in partnership with the local community. In general, the targeting criteria of households will be based on economic, physiological and social vulnerability criteria. This will include: very poor households, households with more malnourished under 5 years children, households with special needs members (disabled, elderly or ill), households with orphans, households whose livelihood assets have been depleted (pastoralist who have lost livestock) and socially excluded individuals such as those from minority clans. It is expected that through the participatory process, community members will reach a consensus in ensuring the right people are selected. Appropriate complaints and response mechanisms will be established to deal with emerging issues during the process.

### We will work with partners to make sure as many people are reached as possible

**COORDINATION:** World Vision Somalia will continue to actively engage in various coordination, cluster meetings and working groups' forums within Somalia and the East Africa region. Apart from sharing information with other stakeholders, including government ministries, NGOs and the UN agencies, these fora ensure World Vision work is acknowledged.

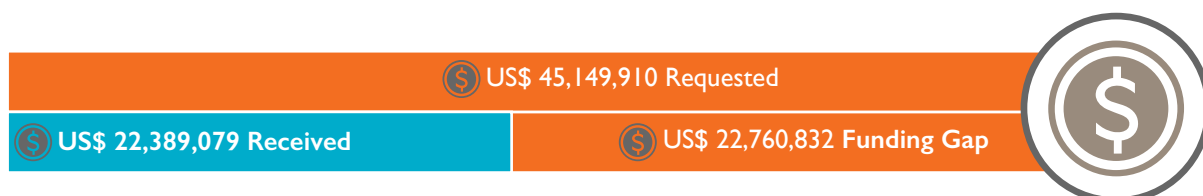
### We will ensure our team acts quickly and effectively

**WORLD VISION SOMALIA CAPACITY:** World Vision has operated in Somalia since 1993, implementing various emergencies and long term projects in the four regions of Somaliland, Puntland, Jubaland and South West. With more than 300 staff, including technical advisors backed by additional surge capacity provided for by the World Vision International partnership, World Vision Somalia has the required capacity to deliver on the current emergency response (CATIII) and future recovery and resilience interventions.

# GAPS AND FUNDING REQUIREMENTS

World Vision is appealing for US\$ **22,760,832** to fill the gap and meet the funding requirements

Response Sector	Funding Requirements (US\$)
Food Security & Livelihoods	8,119,300
WASH	2,518,476
Health	4,515,398
Nutrition	3,035,221
Protection	1,379,904
Emergency Shelter & NFI	3,192,533
Education	0
<b>TOTAL</b>	<b>22,760,832</b>



## CONTACT INFORMATION

### Simon Nyabwengi

National Director

Email: [Simon\\_Nyabwengi@wvi.org](mailto:Simon_Nyabwengi@wvi.org)

Skype: [symon.nyabwengi](https://www.skype.com/people/symon.nyabwengi)

### Lillian Omariba

Senior Communications Manager

Email: [Lillian\\_Omariba@wvi.org](mailto:Lillian_Omariba@wvi.org)

Skype: [lkemmy30](https://www.skype.com/people/lkemmy30)

### Kevin Mackey

Program Development and Quality

Assurance Director

Email: [Kevin\\_Mackey@wvi.org](mailto:Kevin_Mackey@wvi.org)

Skype: [kevin.mackey2](https://www.skype.com/people/kevin.mackey2)

### Tobias Oloo

Operations Director

Email: [Tobias\\_Oloo@wvi.org](mailto:Tobias_Oloo@wvi.org)

Skype: [Tobias.Oloo](https://www.skype.com/people/Tobias.Oloo)