

COMMUNITY ELIMINATION OF MOTHER TO CHILD TRANSMISSION (EMTCT) OF HIV APPROACH



A child peer educator talks about HIV prevention at his school



A couple testing for HIV at one of the outreaches in Ngogwe ADP supported by World Vision

HIV and workplace

World Vision Uganda has a functional HIV and work place policy that strives to create an environment free from prejudices, stigma and discrimination for those living with HIV and promotes HIV prevention.

4. Test and link to care model

This model builds the capacity of community-based organizations to mobilize communities for HIV counseling and testing and links those infected to care services. The model also includes an advocacy component that focuses on empowering communities to demand for HIV services such as HIV counseling and testing, prevention, care and treatment.

Contacts
World Vision Uganda
Plot 15B Nakasero Road
P.O. Box 5319
Kampala, Uganda
Tel. +256 414 345 758/251642
Fax: + 256 414 258587
E-mail: Uganda@wvi.org
Website: www.wvi.org/uganda



2015 overview

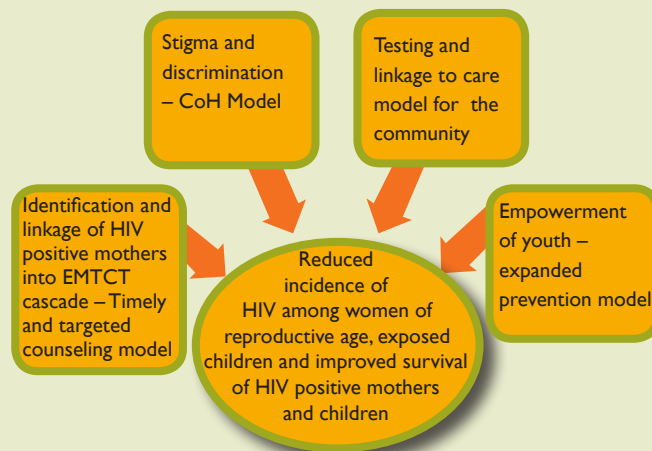
World Vision Uganda (WVU) is a Christian, relief, development and advocacy organization dedicated to working with boys and girls, families and their communities countrywide to reach their full potential by tackling the causes of poverty and injustice.

Over the past decade World Vision has accumulated vast experience in responding to the HIV epidemic in Uganda. World Vision's HIV interventions target women of reproductive age, pregnant women and their spouses, and youth through its Area Development Programmes and grants.

Our community EMTCT interventions strive to achieve an increased supply of EMTCT services; increased demand for these services; and an enabling environment created that ensures that people's views and especially the marginalized are heard.

Models of intervention

World Vision Uganda delivers HIV interventions using four key models. Each model targets a different audience and reinforces key messages. The models are; Channels of Hope (CoH) for HIV, Timed and Targeted Counseling (ttC), Testing and Linkage to Care and Expanded Prevention.



1. Channels of Hope for HIV model

The model targets faith leaders and builds their capacity to respond to the epidemic by equipping them with basic facts and drivers on HIV. Faith leaders establish teams in their congregation that reach out to families with messages on HIV. They also break stigma and discrimination for those affected by HIV and AIDS.



Faith leaders taking lead in one of the CoH training sessions

2. Timed and Targeted Counseling (ttC) model

ttC is a behavior change model that focuses on building the capacity of village health teams (VHTs) to follow-up pregnant women and mothers of children below two years. VHTs encourage mothers to attend antenatal care, test for HIV, and deliver at the health facility under a skilled birth attendant. They also sensitize communities on HIV prevention, enrolment into care and adherence to treatment for people living with HIV, child survival and malaria prevention.



Peer educators preparing a group presentation during a HIV based life skills training in Nabuyoga ADP

3. Expanded prevention model

This model targets youth in and out of school. It is comprised of three approaches; life skills, parent-child communication and community change. World Vision promotes an enabling environment for youth in their homes and communities by improving the relationship between the parents and children.