



World Vision

Mongolia



Our goal: sustained wellbeing of children within families and communities, especially the most vulnerable

www.wvi.org/mongolia

Strategy 2016-2018

WHO WE ARE

World Vision International Mongolia is a Christian development, relief and advocacy organization dedicated to working with children, families and communities to overcome poverty and injustice.

WHERE WE WORK

We have been working in Mongolia since 1993. We are now the largest NGO in Mongolia, and are present in 17 of the 21 Aimags (provinces) and 7 districts of Ulaanbaatar (UB) where ger (slum) areas are located. We work toward positive transformation and poverty reduction through the implementation of Area Development Programs (ADP/ AP). ADPs are long-term projects (15-17 years) and focused on the unique needs of communities within certain geographical areas (both rural and urban). The central aim of each ADP is to support local communities until they are able to develop independently. As of the beginning of the 2015 fiscal year there are 33 ADPs across Mongolia.

Development

Our development approach is holistic and grass-roots, and focuses on tackling the causes of poverty and empowering communities to create sustainable change.

Advocacy

We We advocate for change, forging complimentary partnerships with many stakeholders and acting as a voice for children, vulnerable people and marginalized communities.

Relief

We provide disaster relief when appropriate and assist communities in disaster preparedness, as well as building economic, social and environmental resilience.

WORLD VISION'S STRATEGIC OBJECTIVES

Our strategic goal:

Contribute to sustained well-being of 864,000 children within families and communities, especially the most vulnerable by 2018.

HEALTH

- ◆ Decrease child and mother morbidity rates, preventable infections and injuries
- ◆ Improve hygiene practices and increase access to improved water and sanitation

CHILD PROTECTION

- ◆ Prevent children from becoming victims of violence and exploitation
- ◆ Build and strengthen child protection system at all levels to respond to violence and exploitation of children

LIFE SKILL AND EDUCATION

- ◆ Expand and improve comprehensive early childhood care and education, especially for the most vulnerable
- ◆ Ensure better quality education that enhances the life skills of children and youth
- ◆ Empower children and youth to raise their voices and be change agents in their communities

RESILIENCE

- ◆ Diversify income generation opportunities for poor households
- ◆ Ensure food security for the most vulnerable families
- ◆ Increase local capacity for emergency preparedness and response

OUR OPERATIONAL MODELS

- ◆ Achieving program economy of scale through efficient and effective use of resources and funding
- ◆ Partnership Model with key stakeholders like the government of Mongolia, corporate and Community-Based Organizations
- ◆ Clustering of ADPs for closer monitoring, shared services and cost efficiency tailored to rural and urban contexts
- ◆ Model of influence and empowerment through changes in policy and laws to multiply impacts in child well-being across the country
- ◆ Nurturing volunteerism and local partners to ensure sustainability and ownership of programs
- ◆ Urban programming to address urban needs and gaps



LANDSCAPE ASSESSMENT

Mongolia is a large, land-locked country with a small population of around 3 million people – making it one of the least densely populated countries in the world. Mongolia has a young population, with children (those under 18 years old) making up 36.4% of the population. The country is becoming increasingly urbanized with around 68% of the population living in urban areas, most notably in the capital city of Ulaanbaatar.

Mongolia's GDP growth sharply slowed from 17% in 2012 to about 3% in 2015. The forecast for the subsequent 2-3 years is projected to be more challenging due to debt repayment obligations, an over reliance on the mining and agriculture sectors and extremely weak infrastructure in rural areas as well as lack of capital for small businesses.

In Mongolia, the poverty rate has decreased and now approximately 21.6% of the population lives under the poverty line, with rural poverty at 26.4% and urban – 18.8%. Poverty

in Mongolia is compounded by a lack of jobs, urban migration, harsh winters, poor health services, lack of access to improved water and sanitation, low food security and disability. Inequality between the poor and the rich is increasing and the concentration of wealth in the cities has widened the gap between rural and urban poverty rates.

Whilst Mongolia's prospects for development are undoubtedly strong, there are no guarantees to sustain them. To ensure sustainable and inclusive growth, Mongolia needs to ensure efficient use of public revenues, diversification of the economy, effective allocation of resources, reduction of poverty and equal opportunities for all citizens -especially the most vulnerable members of society - in both urban and rural areas.

OUR FUNDING MODELS

- ◆ Strengthening funding diversification and focus on increasing the Non-Sponsorship and Grants portfolio
- ◆ Corporate engagement with a focus on extractives
- ◆ Optimal funding including Area Program model agreed by Support Offices and the Global Centre
- ◆ National and local Government funding through contracting, providing technical expertise and joint projects
- ◆ Local funding including major donors and groups

OBJECTIVE ONE: IMPROVE THE HEALTH STATUS OF CHILDREN AND FAMILIES

1. Decrease child and mother morbidity rates, preventable infections and injuries
2. Improve hygiene practices and increase access to improved water and sanitation



PROJECT MODELS AND APPROACHES

- ◆ To improve health care service and mobilize communities to respond to their MCH issues through timed and targeted counselling and Community Committees practices integrated with Graduation approach in the western 5 and other three aimags where child mortality rates are high
- ◆ Empower youth to make informed decisions about risks such as drugs, smoking and alcohol use, HIV/AIDS, sexually transmitted diseases and adolescent pregnancy through awareness raising campaigns and information dissemination through the Youth Positive Development project model integrated with other approaches
- ◆ Scale up Citizen Voice and Action approach for improving primary health service at the local level. Partnering with provincial and national government to advocate for policy and system changes related to health challenges raised by communities and children.
- ◆ Promote health education for children at the school and household level using the Child to Child approach. Children and teachers will play an active role to influence other peers and parents in the Community Led Total Sanitation and the School Led Total Sanitation approaches.

OUR REACH

31 000 children
under 5
170 health clinics

OBJECTIVE TWO: PURSUE ACCESS TO QUALITY AND CHILD-FRIENDLY EDUCATION AND LIFE SKILLS FOR ALL CHILDREN

1. Expand and improve comprehensive early childhood care and education, especially for the most vulnerable
2. Ensure better quality education that enhances the life skills of children and youth
3. Empower children and youth to raise their voices and be change agents in their communities



PROJECT MODELS AND APPROACHES

- ◆ Improve preschool education through the Early Childhood Development model which will contain ger and mobile kindergartens, CVA and 'Getting ready for school' alternative pre-school education existing interventions.
- ◆ Empower youth to gain confidence and mastery in applying essential life skills through the Positive Youth model.
- ◆ Promote life skills on strengthening youth understanding of family planning, constructive use of time, protecting themselves from abuse, exploitation and risks, improving the external environment, and that community value youth and listen to them
- ◆ Enhance child and youth leadership capacity through strengthening Children Led Participation Councils and working towards greater representation of the most vulnerable children
- ◆ Advocate for policy improvement so that education is inclusive of life skills development and educational issues especially for the most vulnerable children such as the disabled, disadvantaged, ethnic minorities, marginalized and the economically poor

OUR REACH

160 schools
61 000 youth

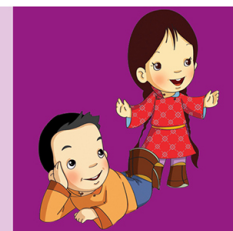


Our vision for every child,
life in all its fullness.

Our prayer for every heart,
the will to make it so.

OBJECTIVE THREE: ENSURE CHILDREN ARE PROTECTED FROM VIOLENCE AND EXPLOITATION

1. Prevent children from becoming victims of violence and exploitation
2. Build and strengthen the child protection system at all levels to respond to violence and exploitation of children



PROJECT MODELS AND APPROACHES

- ◆ Implement the system approach which focuses on strengthening the protective environment along with multiple formal and non-formal actors
- ◆ Preventing children from exploitation and violence through awareness raising and capacity building of communities, parents and children
- ◆ Strengthen reporting and the referral mechanism at community and national levels
- ◆ Enhance community-based support and services especially to the most vulnerable children and their families through the Celebrating Families, and Home Visitor approach
- ◆ Build children's life skills, resilience and participation through implementing the Peace Road curriculum, Article 15 toolkit and Child Friendly Local Governance model.
- ◆ Be an active member in the Child Rights Network with other organizations to implement joint advocacy initiatives in order to improve the legal environment, government's child protection system, action plans and increased financial allocation to child protection issues

OUR REACH

160 000 children
160 urban/ rural
units

OBJECTIVE FOUR: ENHANCE THE RESILIENCE OF FAMILIES AND COMMUNITIES TO ENVIRONMENTAL AND ECONOMIC SHOCKS

1. Diversify income generation opportunities for poor households
2. Enhance food security for the most vulnerable families
3. Increase local capacity for emergency preparedness and response



PROJECT MODELS AND APPROACHES

- ◆ Encourage community members to work together to run micro and small businesses, to deliver entrepreneurial skills and knowledge and to link local producers to local, regional, and national markets
- ◆ Promote poor people to adapt savings behaviour and to save together in safe, convenient and flexible ways through the Saving Group project model
- ◆ Support the poorest of poor families to uplift themselves from extreme poverty to sustainable livelihoods using The Integrated Graduation approach.
- ◆ Encourage communities to identify economic sub sectors and develop local value chains along with other stakeholders through The Sub Sector Development approach/Participatory Appraisal for Community Development (PACED) and the Local Value Chain Development project model.
- ◆ Enhance economic opportunities for youth through delivering financial knowledge and skills and creating more business and employment prospects
- ◆ Increase disaster preparedness and management capacity at local levels through implementing Community Based Disaster Risk Reduction (CBDRR) model. School based DRR will be scaled up and strengthened. WVIM leads the UN Food Cluster and works with partners to strengthen its capacity.
- ◆ Implement Managed Natural Regeneration (MNR) which is a rapid, low-cost, easily replicated approach to restoring and improving agricultural areas, forests and pasturelands through reforestation and agro-forestry

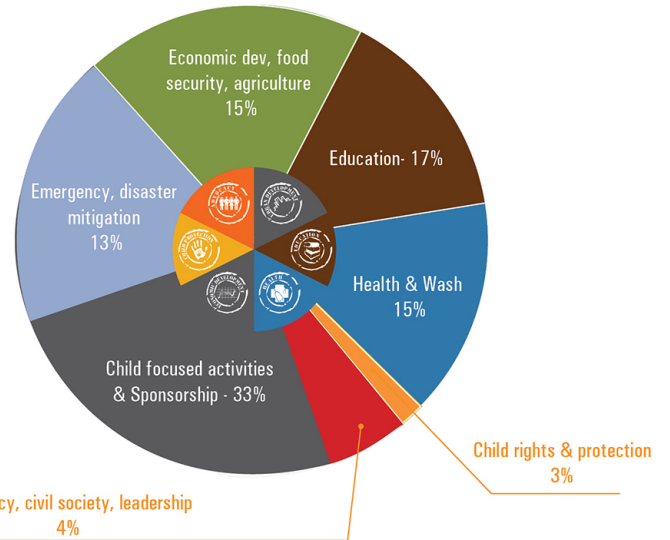
OUR REACH

32 000 families
65 000 people

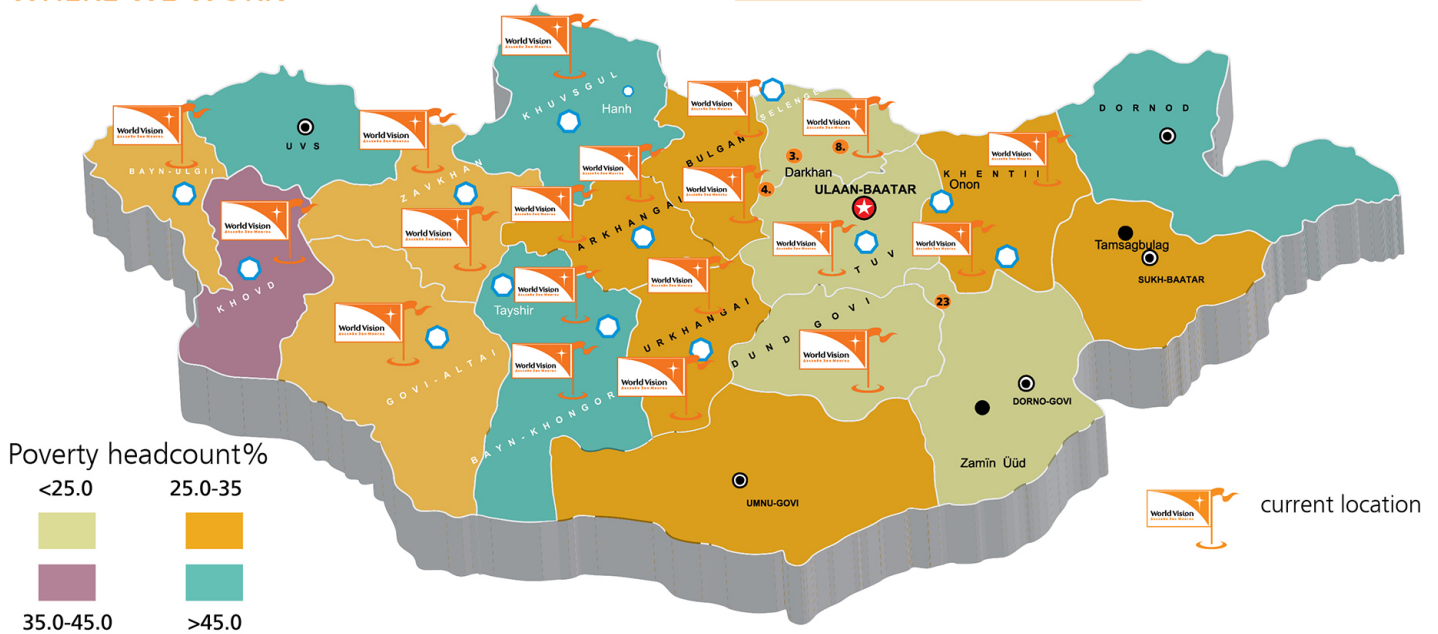
Our main partners are:

- ◆ The government
- ◆ Churches and other faith-based organisations
- ◆ Multilateral organisations
- ◆ Local NGOs
- ◆ Civil society organisations Community-based organisations
- ◆ Academic and education institutions
- ◆ Corporate partners including extractives
- ◆ Media outlets

FY 15 BUDGET SPENDING



WHERE WE WORK



CROSS-CUTTING THEMES

DISABILITY

Children with disabilities are one of the most vulnerable groups in Mongolia. In all of our work we will seek to address the special needs of people with disabilities – especially children. We will promote the rights of people with disabilities and ensure their participation in all aspects of programming such as education, health, and economic development.

GENDER

Both women and men have different priorities and barriers to participation and addressing these differences is critical to the long-term success of our development initiatives. We will ensure that our work address issues of gender equality within communities.

ENVIRONMENT

World Vision’s environment strategy ensures that our work is ecologically sustainable. An environmental strategy will be developed to assess the environmental impacts of our work, address current environmental challenges, increase the capacity for disaster risk reduction, and to increase awareness about the environment in the organization and with our partners.



E-mail: mongolia@wvi.org
 Web: <http://www.wvi.org/mongolia/>

World Vision International
 Mongolia

Tel: 976 70155323
 Fax: 976 70155322

World Vision Mongolia
 13th micro district, Peace avenue,
 Building #49, Somang Plaza, 4th
 floor, Bayanzurkh district, 15th
 khoroo,
 Ulaanbaatar 13370
 Mongolia
 POB – 705, UB- 15160