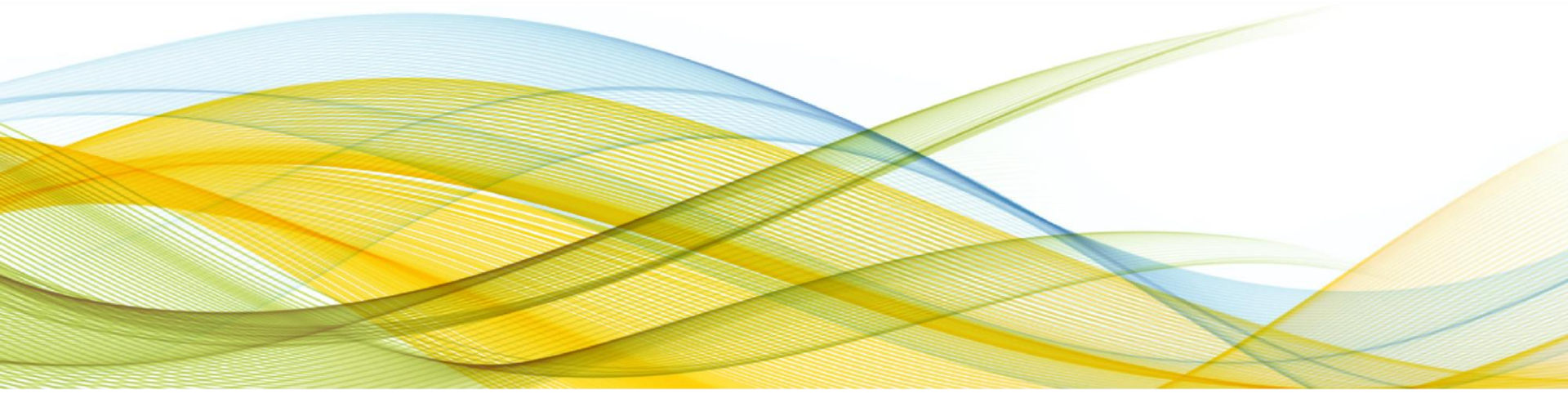


Osiligi Integrated BabyWASH Project

April 13, 2017



What is EED?

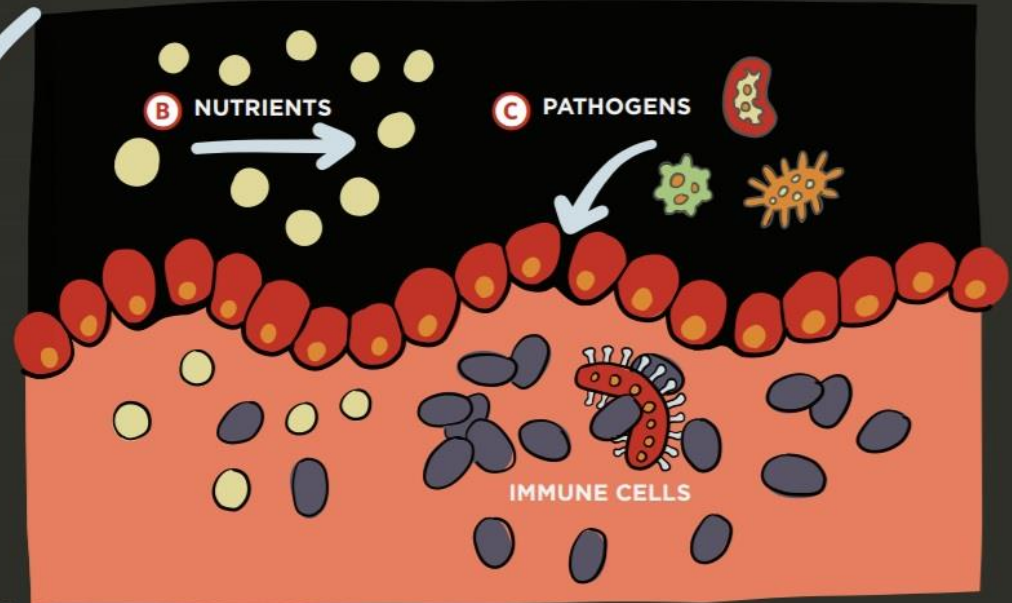
- Also known as *Environmental Enteropathy (EE)*

EE's effect on intestinal health

EE impacts the villi that line the small intestine to absorb nutrients.



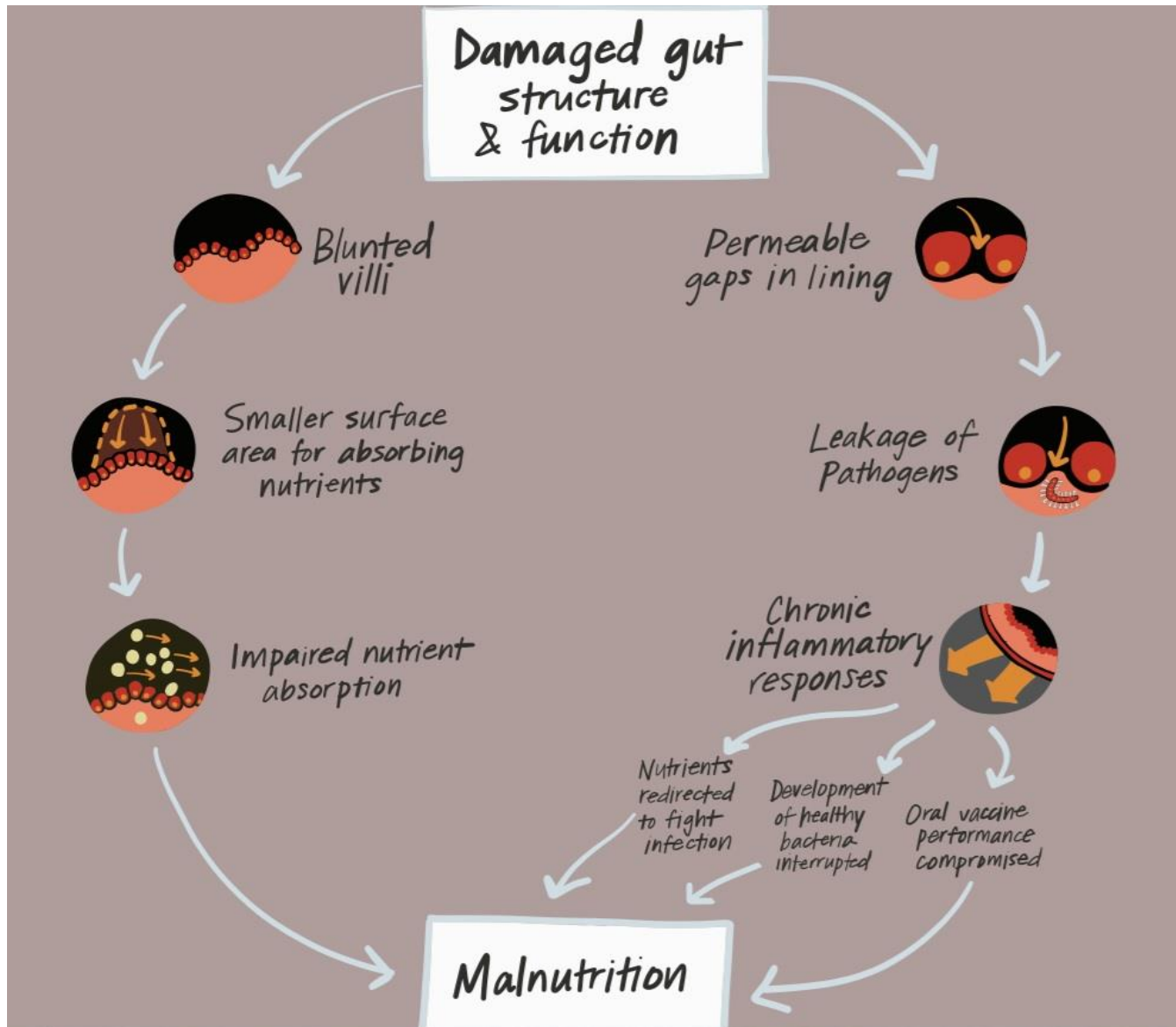
DAMAGED GUT



A EE FLATTENS INTESTINAL VILLI AND PREVENTS OPTIMAL NUTRIENT ABSORPTION.

B UNABSORBED BY THE DAMAGED GUT LINING, SOME NUTRIENTS PASS OUT OF THE BODY.

C PATHOGENS LEAK THROUGH THE GUT LINING, TRIGGERING AN IMMUNE RESPONSE THAT DIVERTS NUTRIENTS FROM FUELING GROWTH TO FIGHTING INFECTIONS.



Graphics from defeatdd.org and PATH

WV BabyWASH Priorities



2 Pregnancy Household

- **Prepare** HH for a WASH Safe birth to protect against maternal and newborn sepsis
- **Prepare** HH for a clean environment to protect infant from diarrhoea and EED



2 Labour and delivery Facility

- **Facilitate** a WASH safe birth at health facilities to protect against maternal and newborn sepsis by assuring water and sanitation availability
- **Facilitate** a clean birth (6 cleans) with a SBA by supporting materials and training for clean birth



3 Newborn, infancy and early childhood HH & Community

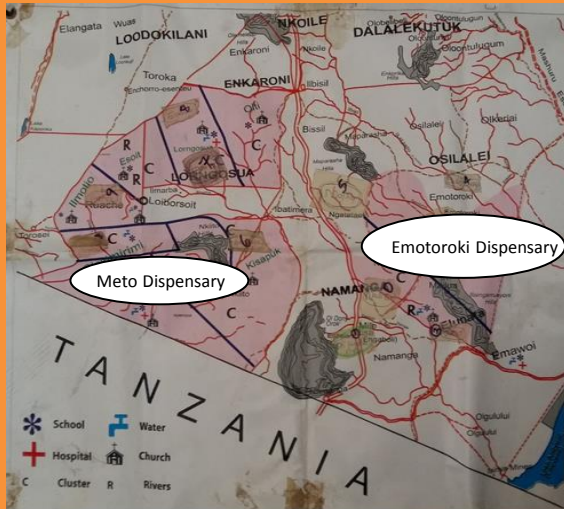
- **Protect** against diarrhoea and EED by assuring a clean community environment
- **Protect** against diarrhoea and EED by assuring a clean HH environment for infants & young children
- **Protect** against and aid in recovery from EED by promoting breast feeding and increasing nutrient intake

Project Overview

Implement full integrated set of programs in Meto district

Implement normal interventions in Bisil location (Emotoroki Dispensary)

Partner with Jomo Kenyatta University of Agriculture and Technology (JKUAT) to determine if an integrated approach results in better health outcomes than a siloed approach



Project is in Kajiado county, just south of Nairobi.

Project Development Process

Talking about BabyWASH internally and externally

- Focused on integration/ multi-sectoral actions
- Issues with funding

Innovative funder stepped forward

- WV Korea willing to fund a pilot project
- Key internal advocate for integration

Multi-Sectoral working group formed to plan program

- Got MNCH, WASH, Nutrition and Education all around the same table
- Some review from BabyWASH team but really driven by Kenya team

Involved Sectors

- **Nutrition**
- **Livelihoods**
- **Child Protection**
- **MNCHN**



- **Water access**
- **Sanitation/ hygiene access and behavior change**



Program Elements

1. Pregnancy: Antenatal Care, Referral, Maternal Nutrition, Health Education, Nutrition Counselling, WASH, ECD counselling – to prepare clean play space

2. Labour and Delivery WASH infrastructure, WHO 6 cleans

3. Newborn Care: Initiate to breast milk within 1st hr of life, Exclusive breast feeding for 6 months, Essential newborn care, Immunization, Sanitation & Hygiene

4. Onset of Mobility & Exploration: Complementary feeding, Hygiene and sanitation, safe water access, clean and safe play environment, teething objects

Key Research Questions

1. What is a 'clean play space'?
 - What are culturally acceptable ways to separate children from an unhygienic environment?

2. Does integration lead to better health outcomes?
 - measuring diarrhea, stunting and mortality rates
 - Improved access to WASH and health services at home and health facility

Next Steps

Finalizing approval and program now to be able to start in May

Important to show if this is a feasible and effective way to go about our programming

