

WORLD VISION SUDAN

World Vision Sudan (WVS) is a member of the World Vision International (WVI) Partnership. Established in 1950, World Vision International is a Christian, humanitarian organisation dedicated to working with children, families, and their communities worldwide to reach their full potential by tackling the causes of poverty and injustice.

BACKGROUND

World Vision first opened its office in Sudan in 1983 when it was operational for five years until 1988 when it closed. World Vision resumed operations in Sudan in June of 2004 in response to the Darfur Crisis. Currently World Vision has programmes in South Darfur and Blue Nile states with the headquarter office based in the capital, Khartoum in Khartoum state.

WVS implements emergency, early recovery and resilience programmes. Our key interventions are integrated in approach focusing on Food Assistance, Food Security, Livelihoods and Resilience that includes income generation and sustainable livelihoods, Water, Sanitation and Hygiene (WASH), Health and Nutrition, Education, and Child Care and Gender Development. WVS has nearly a total of 300 staff, 15 of who are expatriate and the rest are Sudanese nationals with a diverse range of competencies and significant experience in major grants management and successful programme implementation.

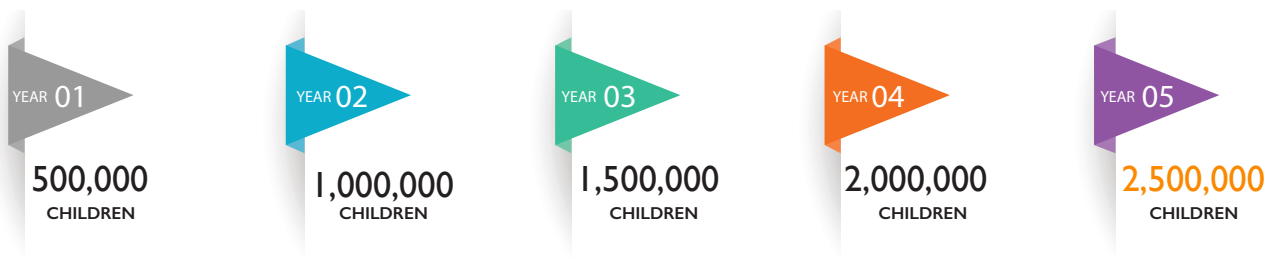
South Darfur accounts for approximately 80 per cent of the organisation's total annual budget with projects implemented across 3 operational areas (zones) namely: North Area, Central Area and South Area. South Darfur also accounts for the field office with the majority number of staff.



CAPACITY STATEMENT

2016 → 2020

Yearly, WVS targets an estimated 500,000 vulnerable children



Our five-year target as articulated in our 2016-2020 strategy is to impact the lives of 2.5 million boys and girls by 2020.

ARP: World Vision's innovative integrated programming model

World Vision is implementing a long-term project in Roseries Locality in Blue Nile state known as Area Rehabilitation Programme (ARP). The three-year integrated project funded by South Korea, focuses mainly on providing sanitation and hygiene services, improving education infrastructure and strengthening protection systems and networks for children, their households and communities.

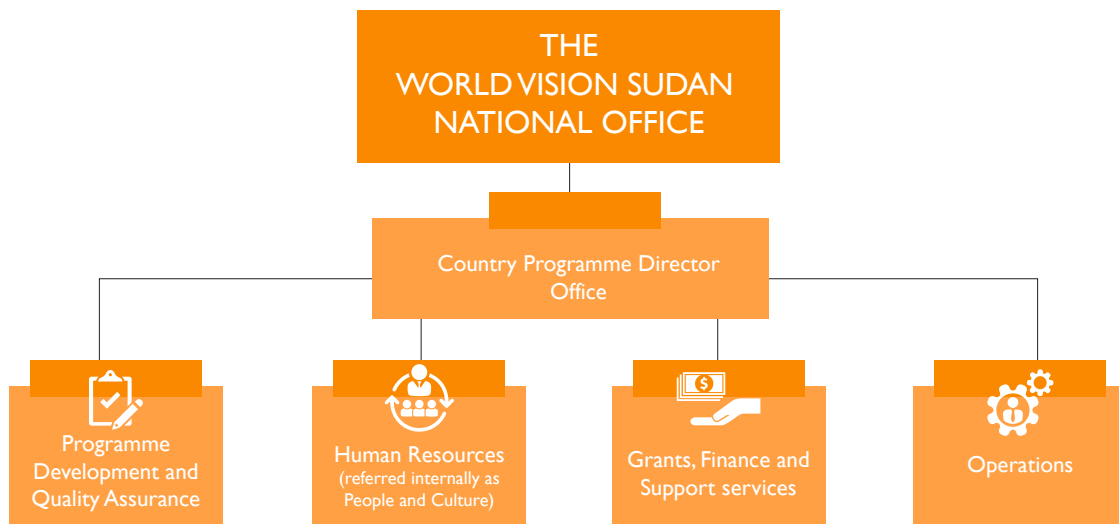
The ARP model gives World Vision an opportunity to commit to a specific geographical location for a defined period of time, usually, a minimum of three years.

Why ARP?

Despite the fact that World Vision's Sudan programme assistance has gone a long way in reaching the most vulnerable, its effectiveness is potentially limited by the fact that assistance is often on a short-term basis.

WVS is primarily grant funded, hence the short time frames of most grants for chronic humanitarian programmes which means that by the time a grant is designed and initiated, World Vision has a very short time frame in which to carry out the projects before they come to an end. The three to five years lifecycle of ARPs seeks to address this limitation in areas of relative stability.

By taking a geographical, integrated focus, the ARP approach seeks to ensure greater community participation and ownership of programmes while at the same time, building their resilience. It therefore allows for long term planning and relationship building with communities because it is World Vision's intentional commitment to lay foundation for more sustainable and, resilience focused activities over a longer period of time.



Technical and Programmatic Capacity

WVS's implementation approach is multi-sectoral and community based, actively partnering and collaborating with a range of government line ministries, UN agencies, peer NGOs, national non-governmental organisations (NGOs) and Community-Based Organisations (CBOs).

The organisation is committed to seeking effective transitions to create sustainable local ownership and government support. WVS therefore uses integrated programming and empowerment approaches that are participatory and community based to enhance ownership of the projects by the beneficiary communities.

WVS is also an active member of Inter-Agency Standing Committee (IASC) and clusters at both State and Federal level led by various Sector Leads and this strengthens coordination of activities and enhances efficiency.

Health and Nutrition Capacity

WVS health and nutrition experts are all based at the field office level providing technical support to nutrition, maternal and child-health programmes – the team is led by an expatriate Health and Nutrition Specialist. Some of our interventions include the provision of life-saving Primary Health Care (PHC) services (including IMCI – Integrated Management of Childhood Illnesses, Expanded Programme on Immunisation (EPI); maternal health and laboratory services, provision of health information and surveillance, construction of health facilities, rehabilitation and management of public health clinics, capacity building of health staff and health promotional activities at a community level.

WorldVision works closely with the Ministry of Health (MoH) both at the federal and state level in aligning interventions to strategic priorities and areas of need as determined by MoH. WorldVision also partners with community health workers, midwives, health facilities personnel, volunteers, teachers, peer educators, religious leaders and community members to deliver this critical service to the target beneficiaries.

Water, Sanitation and Hygiene (WASH) Capacity

The WASH experts consists of a team of engineers, the drilling team, water technicians, hygiene and sanitation experts are all based at the field office level, providing technical support. Our WASH interventions are aligned to the national standards developed by the Ministry of Water Resources at the federal and State level.

Our interventions include but are not limited to:

- ▲ Drilling of boreholes, installing of hand pumps and tap water stations.
- ▲ Rehabilitating broken hand pumps.
- ▲ Training water committees to ensure the proper management of water facilities for longevity.
- ▲ Promoting best sanitation practices such as Community Led Total Sanitation (CLTS).
- ▲ Facilitating the construction of household latrines and promoting their use.
- ▲ Supporting the construction of Ventilated Improved Pit (VIP) latrines in institutions, mainly in schools.
- ▲ Promoting WASH in schools through facilitating of hygiene clubs and installation of hand washing facilities in schools.
- ▲ Mobilising community clean-up campaigns.
- ▲ Equipping Hygiene Promotion Volunteers with requisite skills to reach out to communities with appropriate messages on hygiene knowledge.

Education Capacity

WVS programming in education focuses on improving enrolment, retention and completion of basic education for children of school-going age and enhancing the quality of basic education.

Our interventions include but are not limited to:

- ▲ Increasing awareness on the importance of school enrollment through engagement of parents.
- ▲ Improving quality of the learning environment through construction and rehabilitation of classrooms.
- ▲ Enhancing the capacity of Parents and Teachers Association in schools.
- ▲ Providing learning materials such as books and desks.
- ▲ Working with the Ministry of Education to improve ratios of qualified teachers in schools.
- ▲ Providing a lunch time meal to school-going children.

Food Security and Livelihood Capacity

World Vision's strategy focuses on promoting sustainable livelihoods and improving food security among vulnerable households through various approaches.

Our interventions include but are not limited to:

- ▲ Facilitating farmers to undertake agriculture production through provision of improved seed varieties and other farming inputs.
- ▲ Ensuring sustainable access to improved seed varieties for households through establishment of farmers groups to undertake seed multiplication.
- ▲ Extension support for farmers and linkages to existing agricultural research institutions.
- ▲ Supporting small-scale irrigation schemes.
- ▲ Training of selected community model farmers responsible for supporting and transferring knowledge and skills to other community members.
- ▲ Capacity support for agricultural research centres operated by the Ministry of Agriculture.
- ▲ Promoting environment conservation efforts through mobilising planting of trees.
- ▲ Strengthening the capacity of vulnerable households to generate income through provision of start up capital or items.
- ▲ Agribusiness skills training for smallholder farmers, facilitating formation of marketing associations and providing marketing linkages.
- ▲ Facilitating the establishment of community savings and loaning groups to improve household income.
- ▲ Strengthening community agricultural structures such as training of Community Animal Health Workers and Agricultural Extension Workers.
- ▲ Training and supporting women to undertake vegetable production

Child Care and Gender Development Capacity

WVS partners with key stakeholders to ensure that children are cared for in a manner that develops their potential for a sustainable future. We employ several approaches to ensure that children live out their full potential.

Our interventions include but are not limited to:

- ▲ Establishing Child Friendly Spaces (CFS) centres that are intended to provide a safe environment for children to learn, play with their peers and receive psychosocial support.
- ▲ Building the capacity and facilitating the establishment of child welfare community-based networks within Internally Displaced People camps.
- ▲ World Vision works with the State Council for Children in conducting awareness campaigns on the importance of birth registration and mobilising families to take children for registration.
- ▲ Promoting the participation of children through initiatives such as school clubs and child networks.
- ▲ Conducting public awareness campaigns advocating for care, inclusion and participation of all People Living with Disabilities (PWDs) in ongoing projects.
- ▲ Strengthening parental support systems through equipping parents and caregivers on parenting skills and early childhood development.
- ▲ Individual tailored support to vulnerable children: Individual case management and support to children at risk and children whose rights have been violated.
- ▲ Facilitating the establishment and staffing of strong referral systems that take care of the needs of survivors of abuse.
- ▲ Building the capacity of key duty bearers such as religious leaders, Law Enforcement Officers, and State Ministry of Social Welfare staff, community members and parents on their roles and responsibilities.

‘World Vision’s experiences with CFS indicate that recreational activities help stimulate the thoughts, feelings, emotions and social behaviours of children, strengthen their resilience and spurs social, moral, intellectual and physical development. Additionally, they have been proven to help build child-to-child relationships and overcome feelings of isolation and disconnection.’

South Darfur Food Assistance Programme

Through partnership with World Food Programme (WFP) and support from our global offices, World Vision has been providing emergency food assistance to vulnerable populations in South Darfur state since 2004. The programme is implemented in Nyala, Kass and North Corridor localities targeting internally displaced persons, host communities and returnees with lifesaving emergency food assistance. The food assistance programme has various components, they include: General Food Distribution (GFD), Cash Vouchers, Food for Work (FFW), Food for Education (FFE), and Food for Agriculture (FFA).

Procurement Capacity

WVS procurement processes reflect international best practices such as transparent and competitive tendering and bidding, strategic sourcing, elaborate procurement planning and a vendor database, stock management and inventory controls. Additionally WVS supply chain management and policies are aligned with those of major donors such as the European Commission, DFID and OFDA.

Monitoring and Evaluation Capacity

Learning through Evaluation with Accountability and Planning (LEAP) is WVS's approach to programme-level design, monitoring, and evaluation (DME). WVS employs the use of community-based monitoring approaches such as learning through action research, appreciative inquiry, organisational self-assessment, and Participatory Learning Action.

WVS has an established Monitoring and Evaluation (M&E) unit led by the Accountability, Monitoring and Evaluation (AM&E) Advisor with a functioning M&E system. Each operational area has competent AM&E staff that support the continuous monitoring of the projects against set targets and objectives.

WVS employs a variety of monitoring tools to measure the impact of the projects implemented. The tools are used to compile periodic reports to donors and World Vision management.

Some of the monitoring tools include:

- ▲ Monthly progress reports (both programmatic and financial) that help track achievements and monitor performance
- ▲ Indicator Tracking Table (ITT), Logical Framework and Detailed Implementation Plans to track progress and achievements by indicators and targets
- ▲ Project sites monitoring visits, which are conducted on a monthly basis. WVS carries out joint monitoring visits with Partners
- ▲ WVS also implements humanitarian accountability framework, which emphasises consulting with communities, promoting participation, information provision; and collecting feedback and acting on it

WVS M&E systems also provide for mid-term and end-term evaluations that document the impact of projects based on outcome and impact indicators. Additionally, WVS conducts post-evaluation forums with stakeholders to share lessons learnt, best practices and recommendations that inform the implementation of subsequent projects.

Financial Capacity

There is a strong Finance and Administration department headed by an experienced Finance Director, who is assisted by a seasoned Grants Finance Manager. The department is responsible for the monitoring of grants, consolidating grant reporting and supporting other financial functions at the national level.

At the field office level, each field office i.e. Blue Nile and South Darfur is supported by a Finance Coordinator with oversight provided by the Grants Finance Manager and the Finance and Administration Director. Projects with a budget of over USD 1,000,000 have Project Finance Officers providing technical support.

WVS has sound financial systems that ensure transparency, accountability, judicious use of resources and efficient financial processes. The organisation employs its own Internal Auditor who

conducts at least one annual audit per project. World Vision Global centre office and the East Africa Regional Finance Office also conduct audits of randomly selected grants of over USD 250,000. WVS Sudan's financial records are also audited external by the Government of Sudan through the Ministry of Finance on an annual basis.

In terms of grants management WVS reports on a monthly basis to the Global Grant Compliance Unit, Regional Finance and the World Vision Partnership Finance teams. These reports are also reviewed and verified by the Operations, and Programme Quality team who monitor grant expenditure for project progress, expenditure against cash flows.

Financial processes follow a Field Financial Manual (FFM), which is based on Generally Acceptable Accounting Principles (GAAPs). The FFM provides the guidelines on grants management and expenditure.

To ensure financial information integrity, WVS utilises the Sun Systems Accounting Package to input, track and monitor all financial transactions and this system is able to accommodate different donor requirements in real time.

Donors

'World Vision Sudan is fully funded by grants through donations (which is both in Cash and Gifts in Kind) from individual private donors and public institutions such as multilateral organisations, UN and government agencies. World Vision Sudan also receives funding from the World Vision Support Offices located in Asia, Europe, North America (Canada) and the United States in the form of match funding. Below are some of our major donors.'



Global Affairs
Canada



unicef



UNHCR
The UN Refugee Agency



KOICA
Korea International
Cooperation Agency



USAID
FROM THE AMERICAN PEOPLE



Learn more: www.wvi.org/Sudan

Contact: Country Programme Director, World Vision Sudan
Al Amarat Street 35, Block 10/K House 35

P.O. Box 15143, Khartoum, Sudan

Tel: +249 155 779 308/301

Email: Vince_Edwards@wvi.org