

WORLD VISION KENYA HUNGER RESPONSE SITUATION REPORT NO.7

6 JULY 2017

World Vision

SITUATION HIGHLIGHTS



KEY MESSAGES

- **Increase in need:** 3.5 million people are now affected by drought, an increase from 2.7 million in May. The new statistics are a result of an assessment by the Kenya Food Security Steering Group covering 14 of the 23 arid and semi-arid lands counties. A total of Kshs. 11.1 billion (US \$10.6 million) will be required for response measures between July and December 2017.
- **Low rainfall:** The Mid-Season assessment confirmed the delayed onset of the long rains in both marginal agricultural areas and pastoral zones. The March to May 2017 long rains were characterized by uneven geographical distribution and prolonged dry spells. This resulted in poor crop performance and crop failure in some regions.
- **Fall Army Worm invasion:** Cases of Fall Armyworm were reported in 23 counties with over 800,000 hectares threatened.
- **Fewer meals per day:** A greater numbers of poor families are unable to meet their minimum dietary needs across Kenya. The mid-season assessment indicates that households are eating less often and that their diets are less nutritious and diverse. Families are adopting nutrition coping strategies such as relying on cheaper food and reducing the number, portion and size of meals. As food consumption decreases, malnutrition is on the rise.
- **Education blocked:** 4,500 children were unable to access their education after 18 schools closed in the northeastern part of the country due to heightened insecurity.
- **Election looms:** Public attention to the drought is being overshadowed by the country's general elections scheduled for August 2017. World Vision has developed a contingency plan to respond to any humanitarian issues that may arise during the election.

HUMANITARIAN SITUATION OVERVIEW

- **Poor Crop performance:** The onset of the March to May long rains was delayed and characterized by uneven geographical distribution and prolonged dry spells. Although some southeastern and coastal areas recorded above normal rainfall,



344,000

under 5 children and

43,400

pregnant and lactating women are acutely malnourished

75,010

under 5 children are severely malnourished



2.9 million

people in need of health intervention



3 million

people need access to safe drinking water



3.5 million

people in need of food assistance and livelihood intervention



175,655

people will be targeted for protection interventions



1.2 million

children in need of education intervention

*All financial figures in US dollars

Kenya was largely sunny and dry throughout March and experienced depressed rainfall during April and May. This resulted in poor crop performance and even crop failure in some regions.

- **Disease Outbreaks:** Disease outbreaks continue in parts of the country. There is an active Cholera outbreak in five counties (Garissa, Nairobi, Muranga, Turkana and Nakuru) with 581 confirmed cases and seven deaths (CFR 1.2 per cent). A dengue fever outbreak also continues in Mombasa and Wajir Counties, with 1,015 cases, and one death (CFR 0.1) reported to date. In addition, 17 cases of Measles were reported in Garissa County's Dadaab refugee camp with no death reported so far.
- **Increasing Sudanese Refugees:** Kenya continues to receive an increased number of refugees from South Sudan, with 10,772 new arrivals from South Sudan since January 2017. The majority of new arrivals (69.7%) are from Central Equatoria. The situation in Kakuma and Kalobeyei Refugee camps is further aggravated by the ongoing cholera outbreak.
- **Restricted Access:** Humanitarian access in East Pokot sub-county (of Baringo County) remains severely constrained due to ongoing intercommunal conflict and security operations by government forces. While the humanitarian situation in the sub-county is of great concern (especially the malnutrition situation); access to the affected population is extremely limited. About fifteen health facilities in the area remain closed, and the remaining nineteen facilities are operating sub-optimally.

WHAT WORLD VISION IS DOING



HEALTH & NUTRITION

- **Malnutrition screening, treatment:** 9,400 children under age 5 and pregnant and lactating women are targeted in nutrition interventions to strengthen capacity and support detection, referral and management of malnutrition.
- **Planned maternal and child food:** More than 85,000 children under age 5 and pregnant and lactating women are targeted in a blanket supplementary feeding programmes in Turkana East and South and Marsabit.



WASH

- Repair of one borehole in Mwingi Tseikuru has been completed reaching 1,380 people
- WVK has received funds from UNICEF, ADH and WV Honkong. The funds will be used for rehabilitation of boreholes, shallow wells, water trucking in schools, pipeline extension and hygiene promotion in West Pokot, Baringo, Wajir, Turkana and Marsabit targeting 123,600 people



FOOD SECURITY AND LIVELIHOODS

- **Cash transfers:** 24,550 people were reached through cash transfer programmes in Turkana, Wajir, Garbatula, Taita Taveta, Kilifi and West Pokot.
- **Food assistance:** 202,680 people are benefiting from food and cash transfer programmes in Kilifi, Taita Taveta, Makueni, Moyale, Baringo and Turkana.



EDUCATION & PROTECTION

- **School Feeding:** 14,200 children from 38 schools benefitted from the school feeding intervention in Mwatate, Taveta and Illaramatak. A total of 30.5 metric tonnes of food was distributed. World Vision has purchased 6.27 metric tonnes of Unimix for Early Child Development (ECD) school feeding, in Lamu. Plans for distribution are underway.



252,000

people targeted
for life-saving
assistance

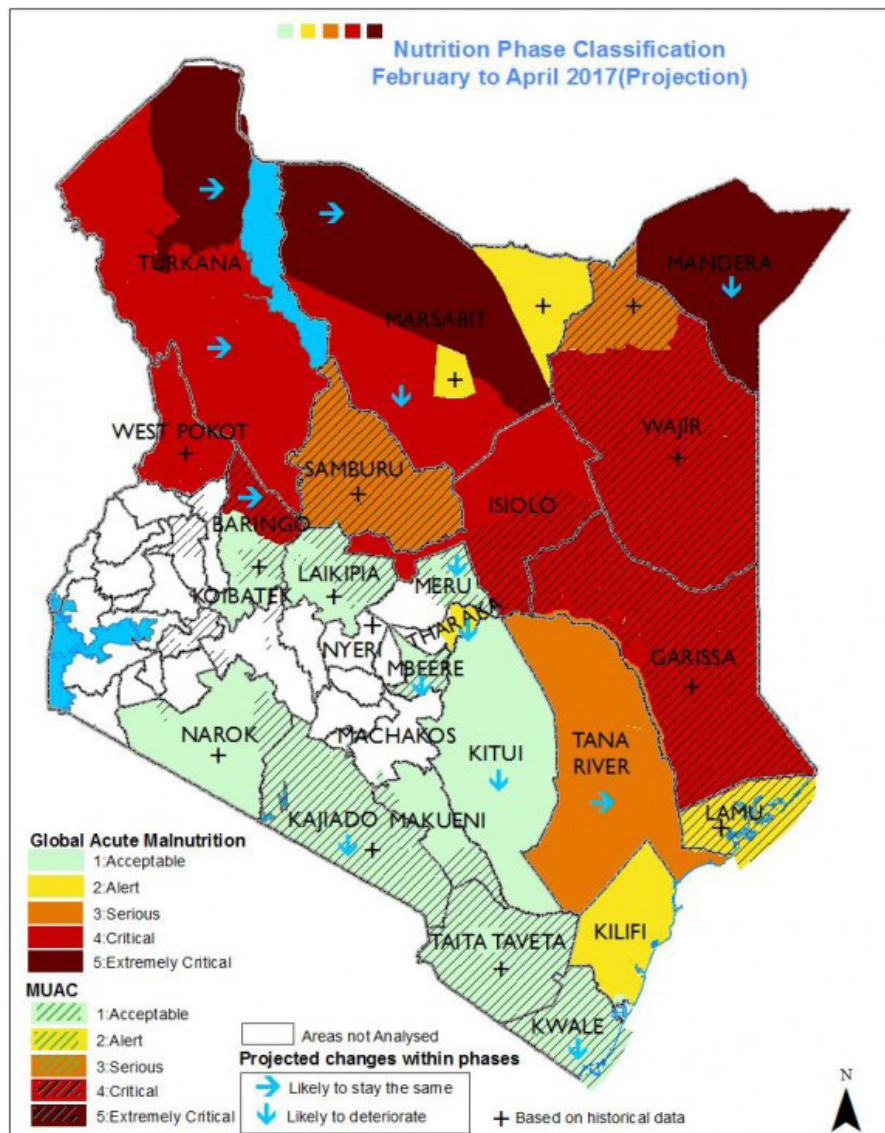


227,230

people reached with
assistance through normal
programming

NUTRITION STATUS IN KENYA

RESPONSE HIGHLIGHTS



227,230

people reached with food security and livelihood support



32,140

people reached with water, sanitation and hygiene support



2,940

people reached with health and nutrition support

NFI

2,400

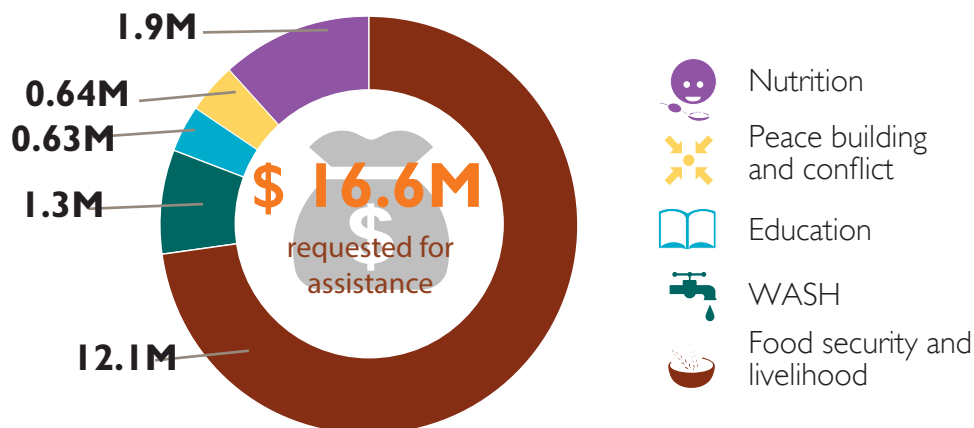
people reached with non food item interventions



14,200

children reached with child protection and education interventions

GAPS AND FUNDING REQUIREMENTS (in millions US\$)



GAP AND FUNDING REQUIREMENTS

\$16.6M requested for hunger crisis response

in millions US\$

\$2.8M
Received

\$13.8M
Unmet requirements

17%

83%

WV KENYA HUMANITARIAN DONORS AND PARTNERS



PRIMARY CONTACT INFORMATION

Jacqueline Rioba

Response Director

Email: Jacqueline_rioba@wvi.org

Skype: jacky.rioba

May Ondeng

Communications Manager

Email: May_Ondeng@wvi.org

Skype: may.ondeng