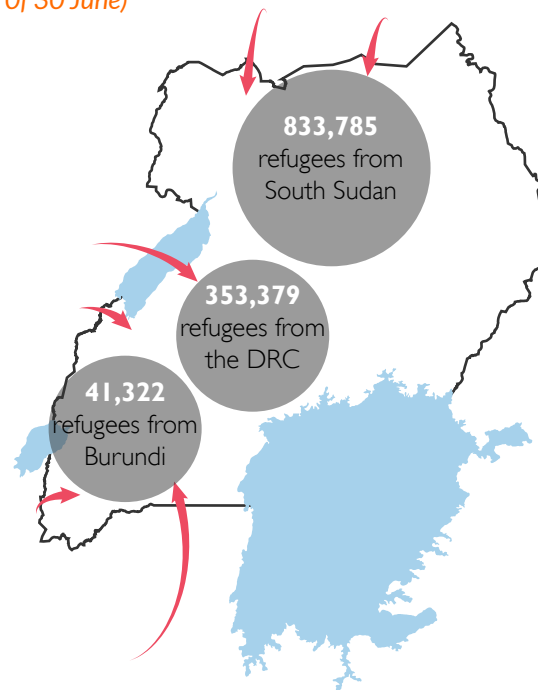


Key messages

- Newly arriving South Sudanese and Congolese refugees:** Despite the reduction in funding, Uganda is projected to receive an additional 155,000 new arrivals, mainly from South Sudan and DRC, by the end of 2019 bringing the population to over 1.4 million persons of concern. In the month of June alone, 1,953 people of concern were received from South Sudan, majority of these are women and children. While 8,647 Congolese refugees were received from DRC in the South West.
- Achieving the nexus:** World Vision has established an area based program linking humanitarian assistance, development and peace building. The program goal is to contribute to enhanced protection, social cohesion and resilience for 50,000 people both from the host community and from refugees in Omugo Sub County, Arua district.
- Income and nutrition:** World Vision has supported 2,000 vulnerable households in Omugo settlement with 20,000 kuroiler chickens and each received 10 chicks (7 hens and 3 cockerels). Presently 650 hens distributed in 2018 are laying eggs while 220 hens hatched over 880 chicks. Hens lay approximately 10 eggs and each egg is sold for USD\$ 0.14 while a mature roaster and hen costs on average USD\$ 6.85 and USD\$ 4.11 respectively in the local markets. Beneficiaries have utilized income to acquire household items. Family members also eat eggs and chicken to have a change of diet from food rations.
- Self-reliance:** World Vision with funding from Austria Development Agency and in partnership with the local government has formed 100 savings and development clusters with a membership of 2500 people from both host and refugee community in Omugo. This aims at promoting savings and community initiated projects expected to lead to social cohesion and self-reliance.

Refugees by country of origin

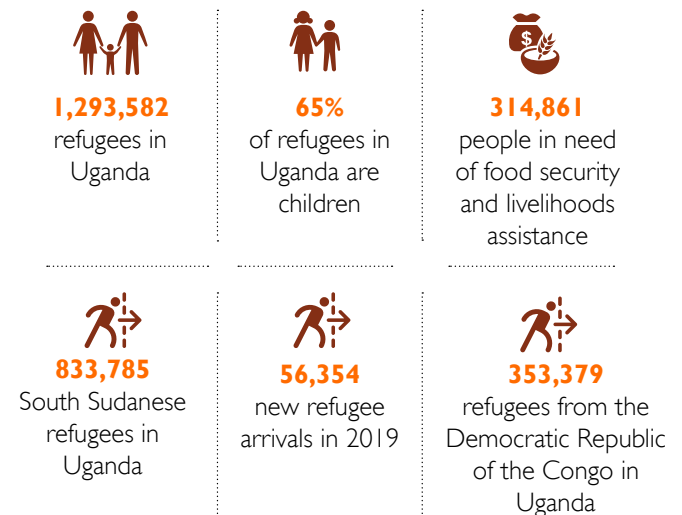
(as Of 30 June)



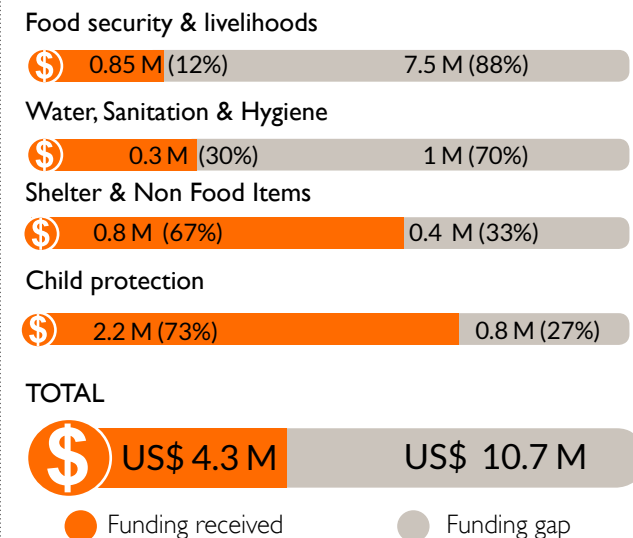
Gaps and needs

- Host community empowerment:** Despite efforts to include host community in different project interventions, project-monitoring visits reveal big gaps in access to basic services such as early childhood education, food, income, water and health facilities.
- Social cohesion:** Dialogue between host community and refugees facilitated by OPM and UNHCR indicates rising cases of petty crime and resource based tension between the two communities. There is need to implement interventions that promote peaceful coexistence and constant dialogue

Humanitarian needs



Funding needs



*All financial figures in US\$

Response highlights



FOOD SECURITY & LIVELIHOODS

- 16,828 refugees and members of the hosting community gained from improved farming technologies, savings and loan associations as well as cash-based assistance to help improve resilience at household level.



FOOD ASSISTANCE

- World Vision's food assistance programme assisted 314,861 South Sudanese and Congolese (DRC) refugees living in Imvepi, Bidibidi, Omugo, Kyaka II and Kyangwali Settlements. 3,959.37 metric tonnes of food were distributed in June.



CHILD PROTECTION

- In June, 51,508 children attended World Vision's Child Friendly Spaces, gaining from educational and psychosocial support.



NFI SHELTER & NON FOOD ITEMS (NFIs)

- 18,776 South Sudanese refugees in Omugo and Imvepi settlements were provided with an essential relief package. 12,204 of these were children under 18 years. The package contained household kits such as (kitchen sets, blankets, soap, plastic basin, water container, sleeping mat, mosquito nets, and solar light). Other items were plastic sheets, ropes, panga, hoes, sickle, and sanitary kits-and sanitary pads and underwear). However, most of the refugees in bidibidi did not receive core relief items like soap and sanitary towels due to shortage in storage facilities.
- Reception Centre Management: 1,923 refugees were received from South Sudan. World Vision manages the reception centres in Omugo, Imvepi and Ocea refugee settlements in Arua district, Bidibidi and Ariwa in Yumbe district in partnership with the UN Refugee Agency (UNHCR) and Office of the Prime Minister (OPM). World Vision provides new arrivals with hot meals, overnight shelter facilities, hygiene and sanitation facilities, as well as providing temporary foster care to unaccompanied children and thereafter referring these cases to various partners for further assistance. In June, our services at the reception centres in west Nile reached 3,542 people.

Response achievements

Reporting period June 01 - June 30, 2019



75,681
people reached with food security and livelihoods



314,861
people reached with food assistance



18,776
people reached with shelter and non-food items



19,004
people reached with education assistance



51,508
people reached with protection services



331
children reached with food security and livelihoods



136,350
children reached with food assistance



12,204
children reached with shelter and non-food items



17,399
children reached with education assistance



48,834
children reached with protection services



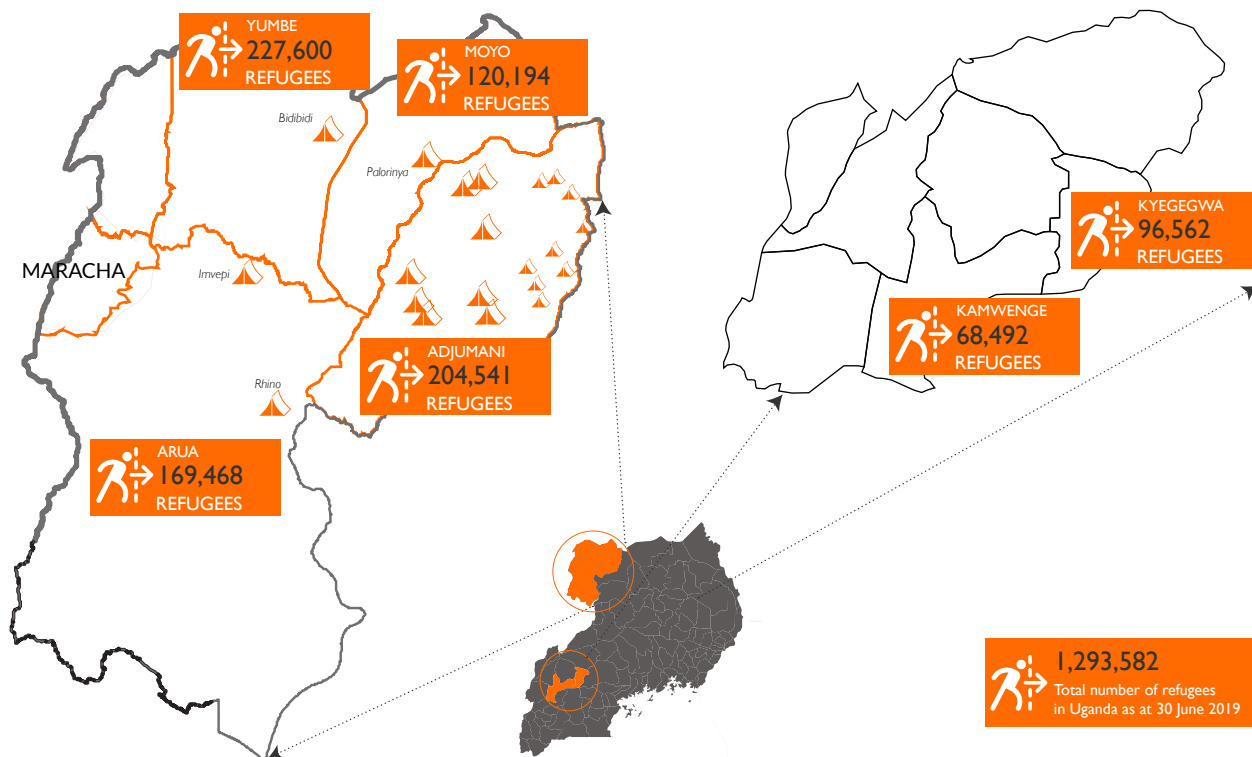
314,861
people reached with life-saving humanitarian assistance in June 2019



136,350
children reached with life-saving humanitarian assistance in June 2019

West Nile response locations

South West response locations



Primary contact information

Jason Evans
National Director,
World Vision Uganda
Jason_evans@wvi.org

Jennifer Neelsen
Response Director
World Vision Uganda
Jennifer_Neelsen@wvi.org

Derrick Kyatuka
Communications Officer
World Vision Uganda
derrick_kyatuka@wvi.org

Moses Odur
DRR & HEA Manager
World Vision Uganda
Moses_ongom@wvi.org

National office donors & partners

Monthly achievements

