

## World Vision | Jerusalem – West Bank – Gaza (JWG)

[www.wvi.org/jerusalem-west-bank-gaza](http://www.wvi.org/jerusalem-west-bank-gaza)

### OVERVIEW: PRIORITIES AND CAPACITY

World Vision is a Christian, child-focused, community-empowering, international organisation that works in nearly 100 countries. We work with the poor and oppressed to promote human transformation, seek justice and bear witness to the good news of the Kingdom of God. Globally, we have impacted the lives of over 200 million vulnerable children by tackling the root causes of poverty.

World Vision began working for the well-being of children in Jerusalem, West Bank and Gaza in 1975 through development, relief and advocacy programmes. We work with predominantly private funding complemented by government grants from donors such as BMZ and Grand Challenge Canada, and bi-lateral grants from UN agencies such as OCHA.



13

Locations in the West Bank



Serving  
41,000+

Sponsored children



Directly reaching  
116,000  
Children



149

Empowered communities

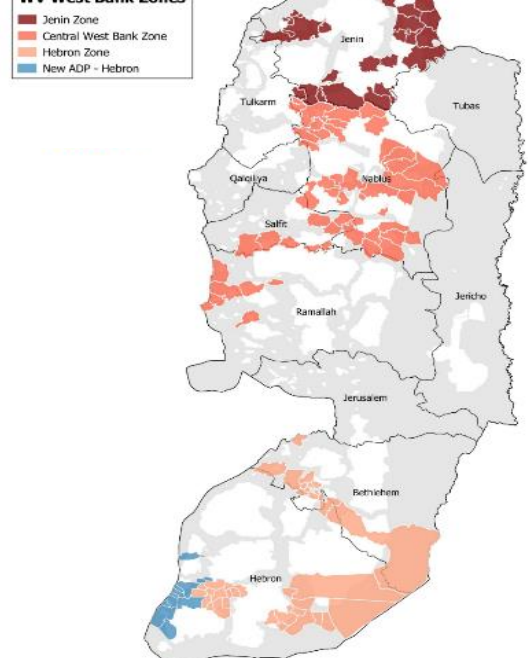


with  
80

Dedicated staff

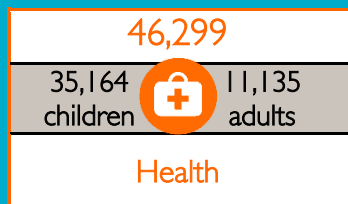
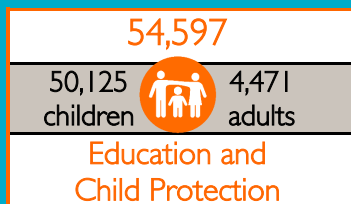
World Vision JWG has one of the largest community-based presence of any organisation operating in the West Bank. We work through 13 locations or area programmes (AP) in the West Bank, which directly support over 41,000 children participating in sponsorship programmes. The multiplying effect of this funding approach, which is based on a community-development model, enables us to serve directly **116,000** children and their families in FY19. The APs are located in Hebron, Bethlehem, Nablus, Salfit, Tubas, Ramallah and Jenin, and are served by 80 dedicated female and male staff. The operation covers **149 communities** with a total annual budget of **\$8 million USD**. Private funding gives us stability and enables us to build long-term relationships with families, communities, schools, municipalities, village councils, the Palestinian Authority, faith communities and other civil society actors.

WV West Bank Zones



Our goal is that boys and girls in the oPt have improved resilience, live in a nurturing environment and have hope for the future. The main focus of our FY20-FY23 strategy is to work toward this well-being of children by addressing key vulnerabilities, such as domestic and school violence, early marriage, low income, and low performance in school. We do so through programming in early childhood development, child protection and participation, youth resilience, education in emergency and faith in development.

Our FY18 impact: 115,938 children with direct investment of \$5,735,989 USD



## PROGRAM AREA: CHILD PROTECTION AND PARTICIPATION



Targeted age group:	0-18
Evidence-based Project Model:	Child Protection and Advocacy (CP&A)
Child vulnerabilities responding to:	Domestic and School Violence, Early Child Marriage
Number of staff:	2 technical and 14 field coordinators/ officers
Total Direct Program Costs:	\$611,6998 USD

### An Approach with Global Success:

Child protection services and facilities improved by 68%.

Based on measures defined by participating communities in 21 countries | 2016 & 2017 Child Well-being Report

World Vision JWG, in partnership with the Ministry of Education (MoE) and the Ministry of Social Development (MoSD), implements a holistic child protection and participation programme across all targeted areas in the West Bank. CP&A uses a 'systems approach' to strengthen the protective environment around children as well as the capacities of children themselves. Interventions focus on

improving laws and accountability, improving social services, catalysing behaviour and attitude change, and strengthening child resilience. Current programming in the West Bank includes:

- Capacity building for caregivers, including faith leaders and church leaders, on positive parenting
- Active engagement of children, adolescents and youth in developing their life skills and in "Ending violence" initiatives and activities that promote social accountability on child protection issues
- Empowering different community members, including children, adolescents and youth, to advocate for improved local referral and response mechanisms as well as national level policies and regulations to tackle violence and strengthen the overall child protection system for all boys and girls.

## PROGRAMME AREA: EARLY CHILDHOOD DEVELOPMENT



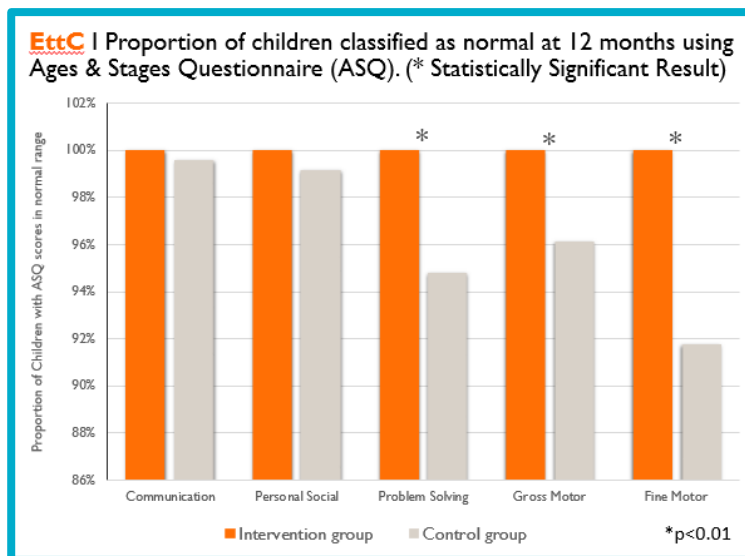
Targeted age group:	0-6
Evidence-based Project Models	Go Baby Go, enhanced Timed Targeted Counseling, Learning Roots
Child vulnerabilities responding to:	Low Performance & Drop out, Early Child Marriage
Number of staff:	8 technical
Total Budget:	\$818,231 USD

World Vision JWG, in partnership with the MoE and Ministry of Health (MoH), implements holistic ECD models for vulnerable Palestinian children ages 0-6. The three project models build the capacity of parents, caregivers, teachers and practitioners to enable them to support children’s healthy cognitive and socio-emotional development.

### Go Baby Go and EttC

Go Baby Go and EttC (ages 0-3) targets the first 1,000 days of life, a crucial period of rapid brain growth. The models support parents, who are first teachers of their infants, with individual home-based support and group sessions for improved parenting skills, family well-being and holistic child development.

World Vision JWG has trained 137 community health volunteers through the programme, leading to statistically significant results on the impact for Palestinian children, as demonstrated in adjacent table.



### Learning Roots

Learning Roots focuses on the developmental needs of children (ages 3-6). It engages parents to support early reading and numeracy skills; strengthens systems by working with national policymakers; fosters community links with the formal sector; and works to strengthen early childhood development centres.

## PROGRAM AREA: EDUCATION IN EMERGENCIES (EIE)



Targeted age group:	5-18
Child vulnerabilities responding to:	Low Performance & Drop out, Violence
Number of staff:	5 Technical Staff
Total Budget:	\$1,565,292.46 USD

World Vision, in partnership with the MoE and village councils, implements EIE programming in humanitarian contexts, mainly Area ‘C’. Programming includes measures to mitigate security and protection issues, provide school-based psychosocial support, provide training in disaster risk reduction and psychological first aid, address infrastructure issues and meet environmental needs based on the need of each community. Activities include installation of solar energy panels, reusing/recycling waste water, recycling solid waste, environmental awareness and activities that build greater capacity at the school and community level. We also establish and rehabilitate school gardens and create safe play areas for children living in these high risk environments.

### Some FY17-FY18 Results

- Enabled 30 targeted schools in Area C to meet their electricity needs with a net profit of more than \$50,000 USD per year by installing solar panel systems on their rooftops.
- Total production capacity of ‘216 KW’ of electricity and ‘100 KW’ for Ya’bad Municipality.
- One of the few national activities to support a link between improved school income and education quality improvement.
- Planted 2,300 trees in school gardens

# PROGRAM AREA: YOUTH RESILIENCE AND LIFE SKILLS



Targeted age group:	12-18
Evidence-based Project Models:	IMPACT+ and Technical Vocational and Education Training
Child vulnerabilities responding to:	Low Performance & Drop out, Early Marriage, and Low Income.
Number of staff:	4 technical
Total Budget:	\$188,040 USD

World Vision JWG, in partnership with the MoE and Ministry of Labor (MoL), implements programmes to strengthen the resilience of adolescents by building their life skills and skills for employment.

Change (statistically significant* = p<0.05)	Preparedness Self-perceived knowledge	Demonstration of Knowledge in Action Self-perceived action
Active Citizenship	12.0% increase*	16.3% increase*
Leadership	13.6% increase*	14.4% increase*
Employability	9.8% increase*	10.1% increase*
Social Entrepreneurship	13.2% increase*	13% decrease (not significant)

## IMPACT+

World Vision JWG builds the capacity of youth in active citizenship, employability, social entrepreneurship, and leadership through an evidence-based practice, IMPACT+. IMPACT+ is a relatively new model for World Vision, but has been found to bring statistically significant results (p<0.05) in as short as 12 months in other countries in the Middle East, Eastern European region. For example in Armenia, adolescents moved from a mainly pessimistic personality to a mainly optimistic one.

## TVET

We offer vulnerable boys and girls, identified through our community-based presence, opportunities to connect with TVET programmes based on market driven skills. We also work to improve the quality of TVET programming (supply).

## FY18 TVET Results:

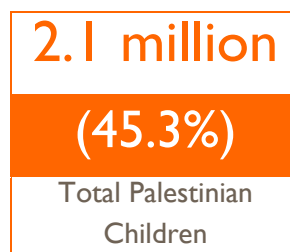
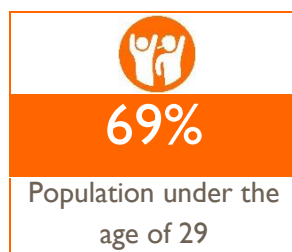
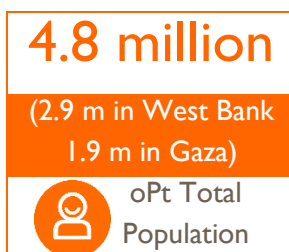
- 30% of targeted women and youth (135 out of 447) secured job opportunities. 25.5% of the total employed receive wages and 17.4% are self-employed.
- The average monthly income of those who received opportunities equals to \$695, which is more than the national poverty line for a family consist of 2 adults and 3 children (2,470NIS or \$686)

## POINTS OF CONTACT

**Lauren Taylor**  
National Director  
Lauren\_Taylor@wvi.org  
+972.54.774.9518

**Haya Helal**  
Grant Acquisition Lead  
Haya\_Helal@wvi.org  
+972.54.774.9535

**Shadia Qubti**  
External Engagement Manager  
Shadia\_Qubti@wvi.org  
+972.54.774.9506



World Vision believes every child is created equal in God's sight, but injustice, corruption, inequality and disasters keep them from lives filled with hope, promise and well-being. In response to this, we connect with and mobilise partners who share common values of compassion, love and mercy to transform children's lives.

World Vision serves all people regardless of religion, ethnicity, race or gender.

