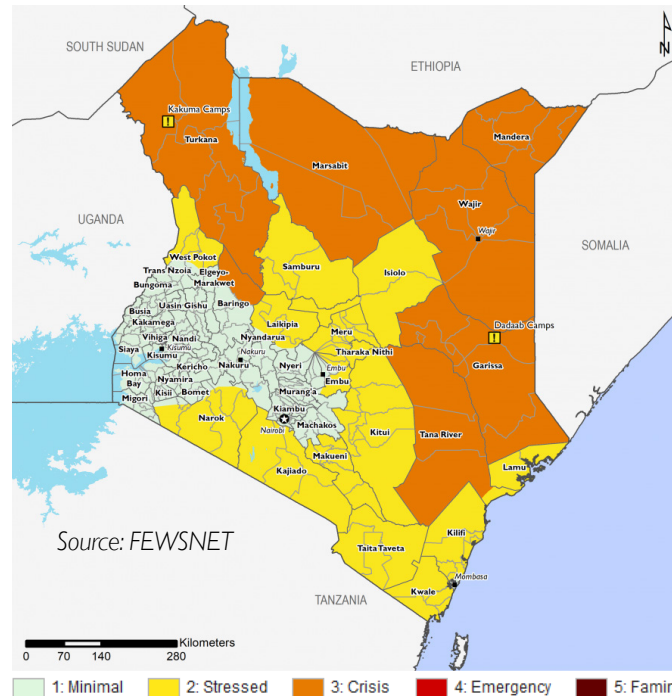


Key messages

- People in need:** According to Long Rains Assessment(LRA) 2019, the overall food security in the Arid and Semi Arid Lands Counties deteriorated 2019 with more households in crisis and emergency phase classification. A total 2.56 million people still require immediate food assistance. This includes 2.26 million people who are in crisis drought classification and 298,000 people who are in emergency drought classification and require immediate food assistance.
- Nutrition concerns:** According to the LRA, the nutrition situation has worsened due to food insecurity compounded by high morbidity, limited access to health and nutrition services. An estimate of 623,814 children are in need of treatment for acute malnutrition and 69,325 pregnant and lactating women require treatment for malnutrition.
- Refugee programming:** Majority of refugees and asylum seekers in Kenya originate from Somalia (54.5%). Other major nationalities are South Sudanese (24.4%), Congolese (8.8%); Ethiopians (5.9%). Persons of concern from other nationalities including Sudan, Rwanda, Eritrea, Burundi, Uganda and others make up 6.4 % of the total population. Almost half of the refugees in Kenya (44%) reside in Dadaab, 40% in Kakuma and 16% in urban areas (mainly Nairobi), alongside 18,500 stateless persons (UNHCR, May 2019).
- Food security outlook:** According to the Famine Early Warning Systems Network (FEWS NET) deteriorating food access and poor milk availability are pushing more households into Crisis (IPC Phase 3) in pastoral areas. Due to below-normal rangeland resource availability, livestock body conditions and value have declined. The decline in livestock prices coupled with rising staple food prices has caused the livestock-to-cereals terms of trade to fall, eroding household purchasing power. It is expected that decreased food and milk intake is driving atypically high malnutrition prevalence in children under five years of age.

Food security outlook

October 2019 - January 2020



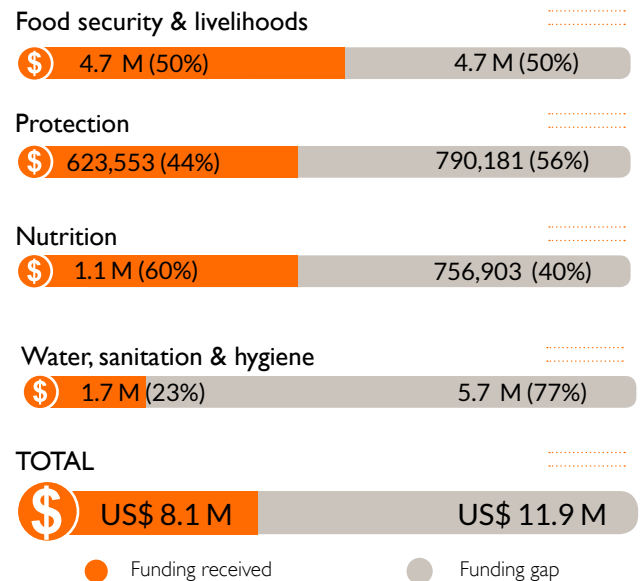
Gaps and needs

- World Vision Kenya continues to mobilize for resources both locally and internationally to support the life-saving response to people affected by disasters in Baringo, Isiolo, Samburu, Turkana, Marsabit, Kilifi, Taita Taveta, Tana River, Makueni, Homabay, Garissa, Wajir, Makueni, Mandera, West Pokot and Isiolo Counties. Due to the effects of drought in the ASAL areas, some of the proposed interventions are in Agriculture, Livestock, Water, Education, Humanitarian assistance and Peace and Security sectors.

Humanitarian needs



Funding needs



*All financial figures in US\$

Response highlights



WATER, SANITATION & HYGIENE

- World Vision in partnership with USAID/OFDA has launched an 18 month "Integrated Emergency Response for drought affected communities in Kenya" focusing on Water, Sanitation and Hygiene, Agriculture and food security, Economic recovery and market systems and nutrition sectors in Kilifi, Tana River and Wajir Counties.
- Through the National Emergency Preparedness Response Funds, 5 boreholes (namely Enkolili, Empukani, Ilkinye, Emashini, Iltripen) were rehabilitated in Kajiado County enabling 2404 adults and 2596 children to access clean water.



FOOD SECURITY & LIVELIHOODS

- Through the General Food Distribution programme in Kakuma, Turkana and Dadaab, World Vision Kenya distributed food to a total of 314,632 beneficiaries (95,196 in Kakuma, 146,434 in Dadaab and 73,002 in Turkana County). The beneficiaries include 138,664 children with a total of 5697.862 MT of food comprising of rice, wheat, pulses and vegetable oil.
- In Turkana, World Vision conducted onsite and hands on training for Project Implementation Committee (PIC) to improve food commodities handling during food distribution.
- In Kakuma, in collaboration with UNHCR, World Vision distributed MTs of multi purpose soap reaching 95,196 beneficiaries.



SHELTER AND NON FOOD ITEMS

- Together with Shelter and NFIs Sector, participated in the review of the Shelter and NFI Sector Strategy.



NUTRITION

- WVK through the emergency funds, supported 20 outreach sites in hard to reach areas with integrated health and nutrition outreaches in Turkana County. Children under 5 years, pregnant and lactating women (PLWs) were screened using both MUAC and Z-scores where the malnourished beneficiaries were referred to OTP and SFP programs.
- In Turkana, through the outreaches, a total of 196 (83 Male, 113 Female) children (6-59 months) with severe acute malnutrition (SAM) were managed under the outpatient therapeutic program (OTP) while 624 (287 Male, 337 Female) children (6-59 months) with moderate acute malnutrition (MAM) were managed under supplementary feeding program (SFP) for treatment of malnutrition. In addition, a total of 335 pregnant and lactating women (PLW) were managed under SFP. Vitamin A supplementation was administered to 317 (145 Male, 172 Female) children (6-59 months) while Dewormers were administered to 240 (105 Male, 135 Female) 12-59 months old children.
- In Turkana, health education on diverse health and nutrition topics like exclusive breastfeeding, WASH and immunization conducted reaching 2502 (800 Male, 1,702 Female) community members.

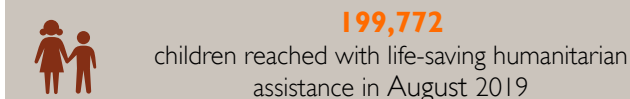
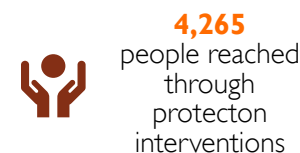
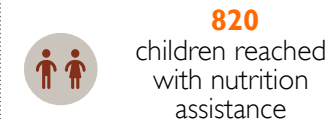


PROTECTION

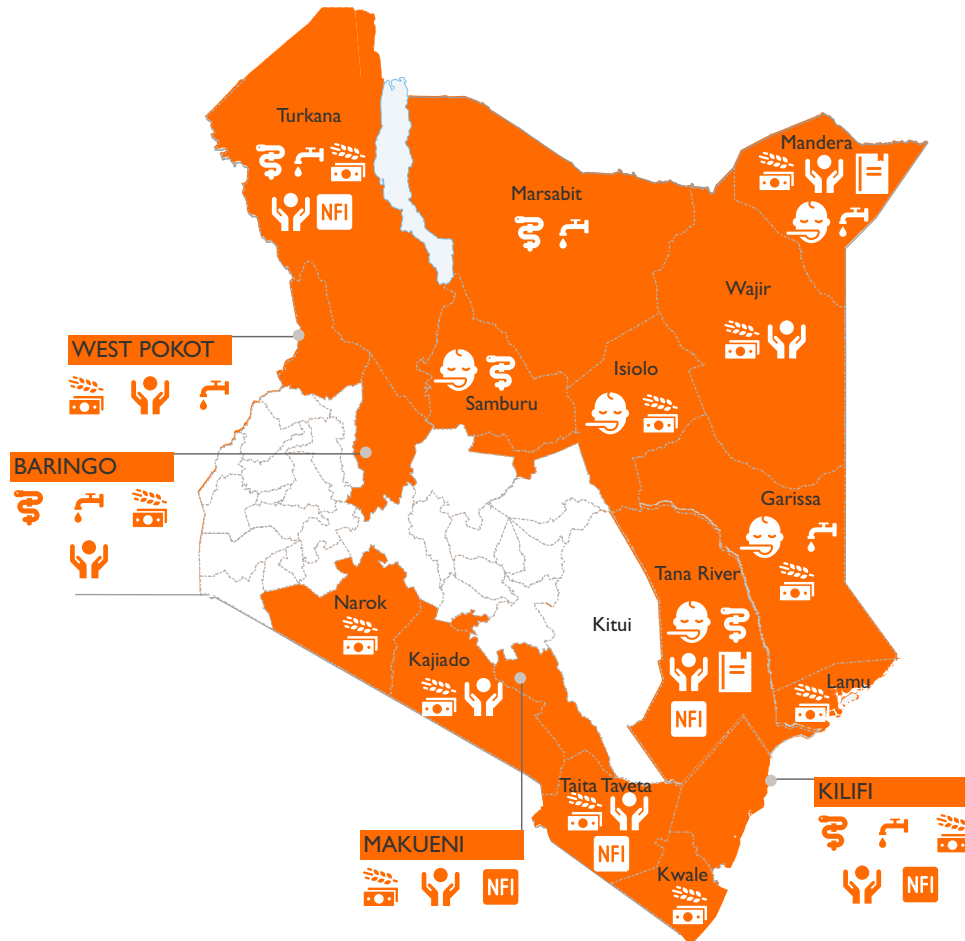
- Disaster Risk Reduction early warning training workshop was conducted 65 participants (51m: 14F) focussing on the relationship between traditional early warning and scientific systems.
- Through the Kakuma ECAP project, 735 peace club members were supported in implementation of the peace road curriculum 21 child help desks were established and supported. Children have a voice in dealing with what affects them. A total of 4200 children were reached.

Response achievements

Reporting period August 01 - August 31, 2019



Response locations



- WASH
- Food Security & Livelihoods
- Food Assistance
- Protection
- Health
- Education
- Nutrition
- Shelter & Non-food Items

Primary contact information

David L. Montague
 Interim National Director
 E-mail: David_Montague@wvi.org
 Skype: davidmontague1

Maina King'ori
 Associate Director Disaster Management
 Email: Maina_King'ori@wvi.org
 Skype: mainaking

May Ondeng
 Communications Manager
 Email: May_Ondeng@wvi.org
 Skype: may.ondeng

National office donors & partners

