

# SOUTH SUDAN

SITUATION REPORT | AUGUST 1 - AUGUST 31, 2019

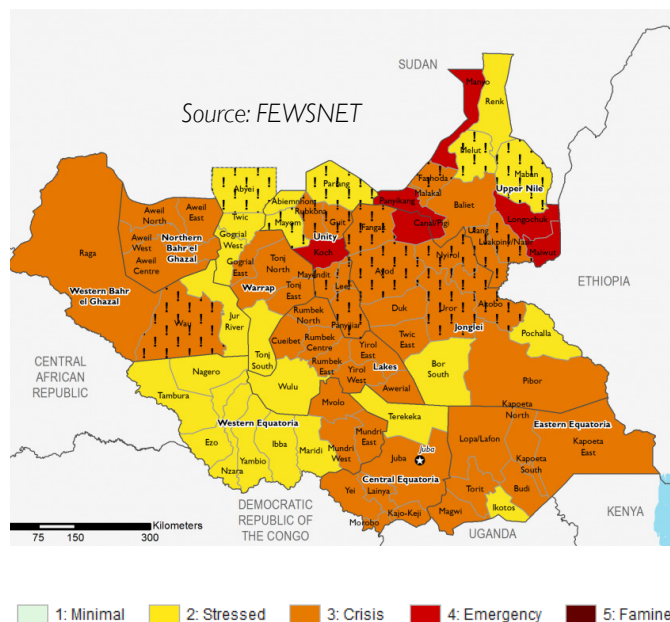


## Key messages

- Resilience and Sustainability:** To address the long-term needs of the population in-need, World Vision's programs build the capacity and skills of people to support themselves. Trainings on livelihoods, vocational and business skills, proper nutrition, health and sanitation among others are being conducted to encourage resilience and sustainability. This month, over 890 farmers in Northern Bahr El Gazal learned about improved farming techniques and were provided with seeds and farm tools. This ongoing livelihoods capacity building is being implemented across World Vision's operational areas.
- Food Insecurity:** December 2018 marked five years since the outbreak of the current conflict in South Sudan, which has resulted in an estimated 380,000 excess deaths, 4.4 million people displaced, substantial macroeconomic decline, and widespread acute food insecurity. World Vision's food assistance has reached close to 300,000 people through various programming initiatives across the four zones in the country.
- Preparedness:** Following the outbreak of the Ebola Virus Disease (EVD) in the North Kivu Province of the neighbouring Democratic Republic of Congo at the beginning of August 2018, there is an increased threat of cross-border spread into South Sudan. To prevent the potential spread and ensure readiness for any eventualities, a preparedness and response plan has been activated in the Western Equatoria zone led by World Vision and in partnership with the Ministry of Health, World Health Organisation and other partner agencies.

## Food Security Outlook

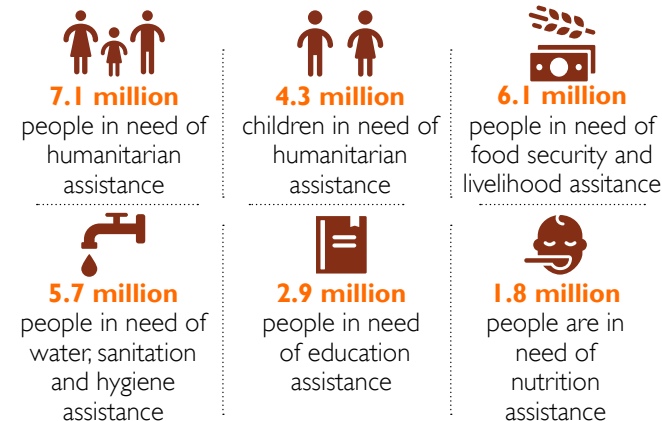
October 2019 - January 2020



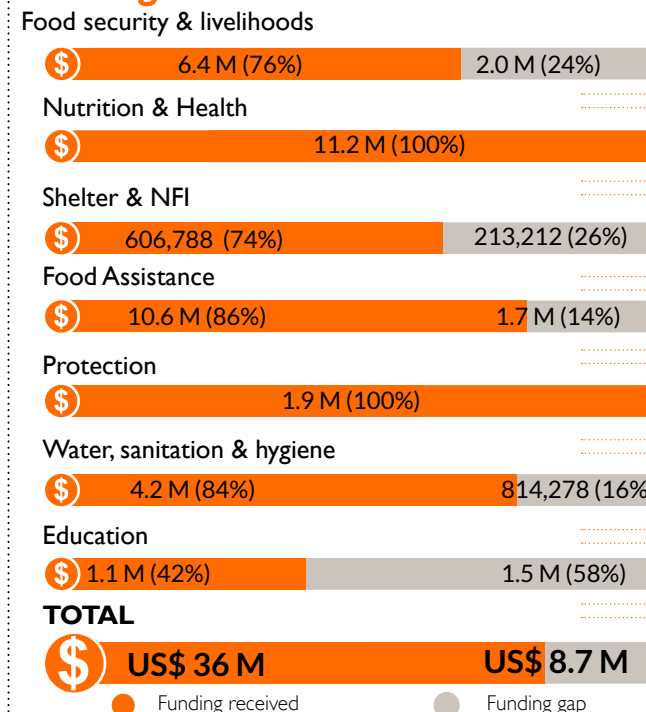
## Gaps and needs

- The humanitarian crisis in South Sudan is complex, with a combination of factors increasing the vulnerabilities of a majority of the population. An estimated 6.45 million people, (more than half the country's population) continue to face acute food insecurity and hence humanitarian support particularly in the form of emergency food assistance is necessary in averting the risk of starvation or worse famine.

## Humanitarian needs



## Funding needs



\*All financial figures in US\$.

The boundaries and names shown and the designations used on these maps do not imply official endorsement or acceptance by the World Vision International

Creation date: 23 September 2019

Sources: UNOCHA, WFP, UNOPS, IPC, FEWS.NET

### Response highlights



#### FOOD SECURITY & LIVELIHOODS

- **Food assistance:** 416,469 people received food assistance through general food distribution, school feeding, blanket and targeted supplementary feeding programmes where they received 1,850 metric tons of assorted food commodities- sorghum, maize, beans, peas, lentils, vegetable oils, salt, CSB++ and Plumpy-sup.
- **Cash assistance:** 140,309 people received \$ 1,442,189 under cash and voucher programming.
- **Skills building:** 981 farmers in Greater Bahr el Ghazal learnt about improved farming practices, pest control, vegetable production, handling and marketing.
- **Inputs Distribution:** 2,515 farmers in Tonj North received vegetable seeds under initiatives aimed at improving household food production kits and tools ranging from amaranth, collard, eggplant, onion, okra, pumpkin, double and edged hoes.



#### HEALTH

- **Curative consultations:** 68,209 people in Upper Nile, Warrap and Western Equatoria people accessed free curative consultations through government health facilities supported by World Vision.
- **Vaccination:** 11,995 children received essential vaccination doses through routine immunization programmes.
- **Ebola Virus Disease Response:** 6,684 people were screened for Ebola virus disease while 4,007 people learnt about risk reduction behaviors.



#### WATER, SANITATION & HYGIENE

- **Potable water:** 136,585 individuals were provided with clean and safe drinking water, with an average 16 liters of safe and clean drinking water per person per day.
- **Behavioural change messaging:** 9,899 people learnt about appropriate hand washing behaviour.



#### EDUCATION & PROTECTION

- **Access, enrolment and retention:** Over 109,279 children acquired numeracy and literacy skills through World Vision supported through food for education, education in emergencies, accelerated learning and early child hood development programming.
- **School supplies:** 64 children in Tonj North received scholastic kits containing school bags and dignity kits.
- **School meals:** 79,636 school children attending schools across Upper Nile, Warrap and NBG received a daily meal aimed at promoting school attendance, retention and completion.



#### SHELTER & NFIs

- **NFI supplies:** 1,200 people received kits comprising of water storage and collection containers, hygiene kits and soap. 891 children received mosquito nets as a motivation for having completed their immunization on time.



#### PROTECTION

- **Child Friendly Spaces:** 20,007 children living in Greater Bahr el Ghazal, Juba and Greater Upper Nile attended World Vision child friendly spaces where they accessed learning, participated in recreational activities and received psychosocial and protection support services.
- **Mine risk reduction:** 3,546 children and adults across Juba, Western Equatoria and Upper Nile attended mine risk sessions where they acquired mine awareness skills.

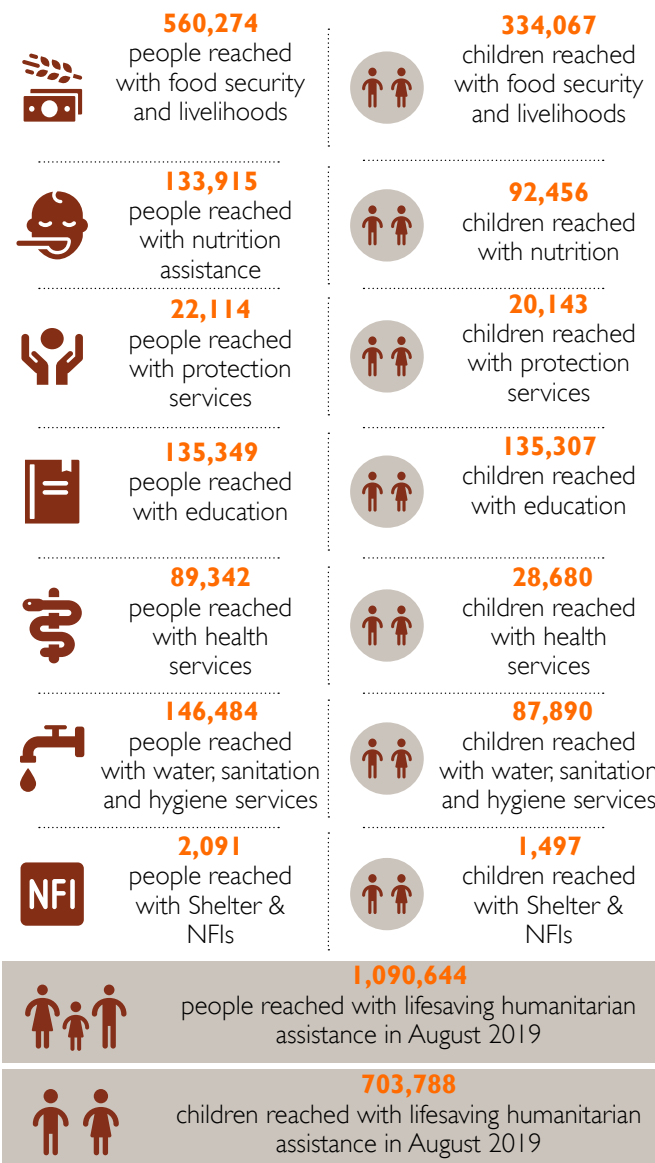


#### NUTRITION

- **Nutrition screening and treatment:** 133,915 children, pregnant and lactating mothers across Juba, Western Equatoria, Upper Nile, and Warrap were screened for malnutrition. 10,832 identified as malnourished were enrolled for care and treatment into World Vision supported nutrition health facilities for care and treatment. 5,930 children were discharged after curing from malnutrition.

### Response achievements

Reporting period August 01 - August 31, 2019

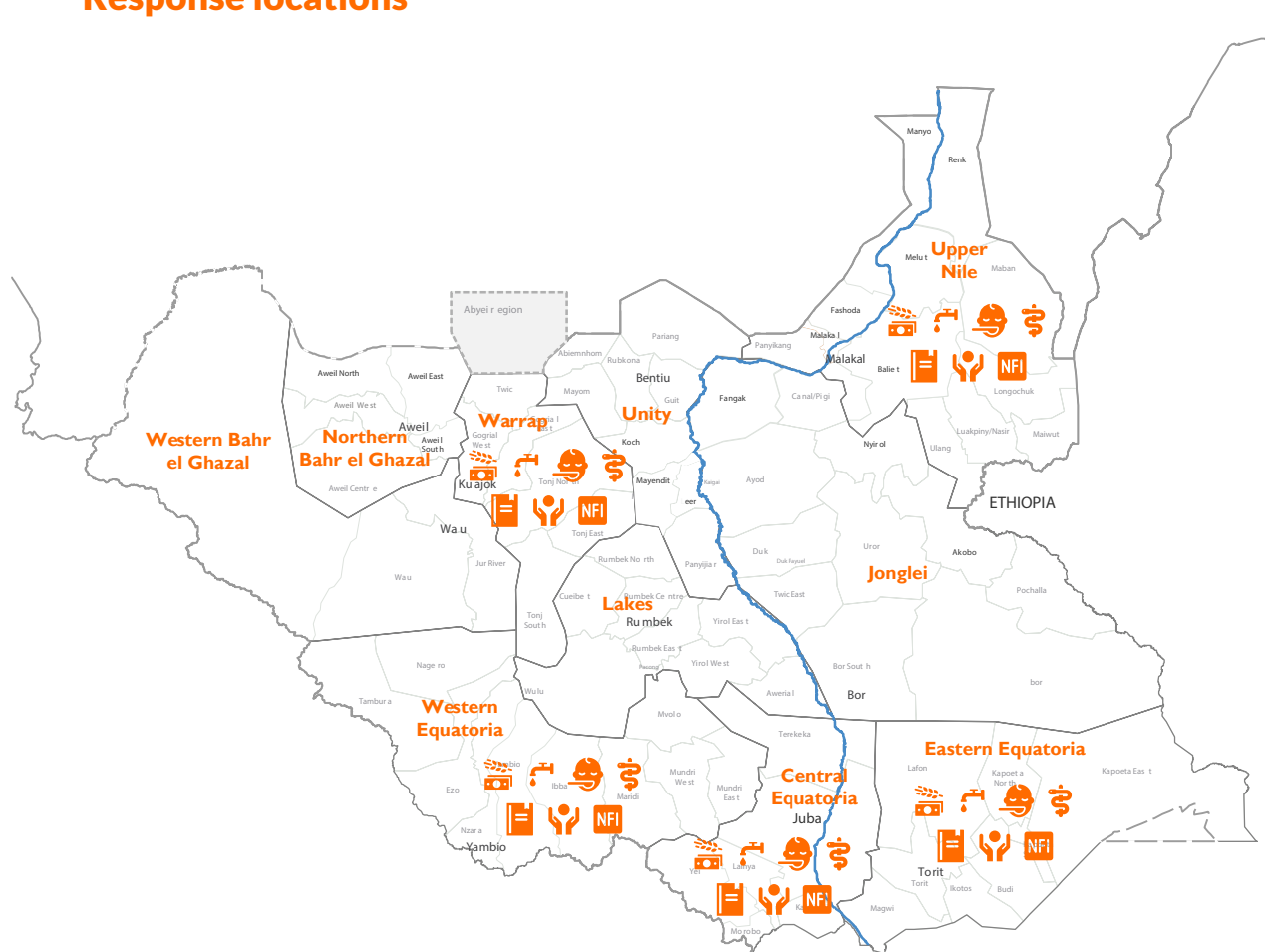


# SOUTH SUDAN

SITUATION REPORT | AUGUST 1 - AUGUST 31, 2019



## Response locations



- WASH
- Food Security & Livelihoods
- Food Assistance
- Protection
- Health
- Education
- Nutrition
- Shelter & Non-food Items

## Primary contact information

### Mesfin Loha

Country Program Director  
Mesfin\_Loha@wvi.org  
Skype: mesloha

### Esatu Elilo

Interim Operations Director  
Esatu\_Elilo@wvi.org  
Skype: esatuelilo.dula

### Martin Omoro

Programmer Quality & Strategy Manager  
Martin\_Omoro@wvi.org  
Skype: martinomoro

## National office donors & partners



The boundaries and names shown and the designations used on these maps do not imply official endorsement or acceptance by the World Vision International

Creation date: 23 September 2019

Sources: UNOCHA, WFP, UNOPS, IPC, FEWS.NET