

SOUTH SUDAN

SITUATION REPORT | OCTOBER 1 - OCTOBER 31, 2019

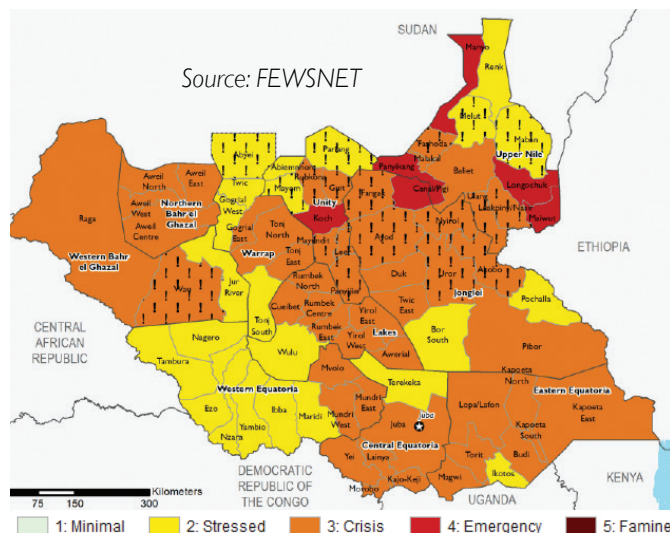


Key messages

- Children worst affected by floods:** According to UNICEF, An estimated 490,000 children are affected by heavy flooding in South Sudan. Heavy rains since July, have affected some 908,000 people in 32 counties. While heavy rain and flooding is normal this time of year, the current scope and scale of the flooding is severe especially in the former states of Jonglei, Upper Nile, Warrap and Northern Bahr El Ghazal. Health centers remain inaccessible to children and their families due to impassable roads and destroyed bridges. Families lack clean water as most water sources are contaminated. Thousands of children remain out of school after most classrooms were destroyed while those that remain are used as shelters for displaced families. World Vision joins partners in appealing to donors for a prompt response to save lives of children and families affected by the disaster.
- Food security outlook:** In the projection period of September to December 2019, the food security situation has improved as seasonal harvests becomes available. An estimated 4.54 million people (39% of the population) are likely to face Crisis (IPC Phase 3) or worse acute food insecurity. Emergency (IPC Phase 4) acute food insecurity is expected to persist in the four counties; Duk county in former Jonglei State and Longochuk, Maiwut and Ulang counties in former Upper Nile State. Coupled with flooding, Maban county food insecurity status is higher than originally anticipated, exacerbated by displacement and losses of crops and food aid commodities at the household level. This is in addition to disruptions to food assistance delivery, trade flows, and market functionality.
- Preparedness:** Measles outbreak interventions are ongoing across 17 counties and four PoC sites in South Sudan as of late October. WHO and Health partners reported approximately 3,500 suspected cases and 23 associated deaths in 2019. Humanitarian actors are responding to the outbreak through immunization campaigns and case management and social mobilization efforts Unity, Upper Nile, Jonglei, Western Bahr el Ghazal, and Western Equatoria states.

Food Security Outlook

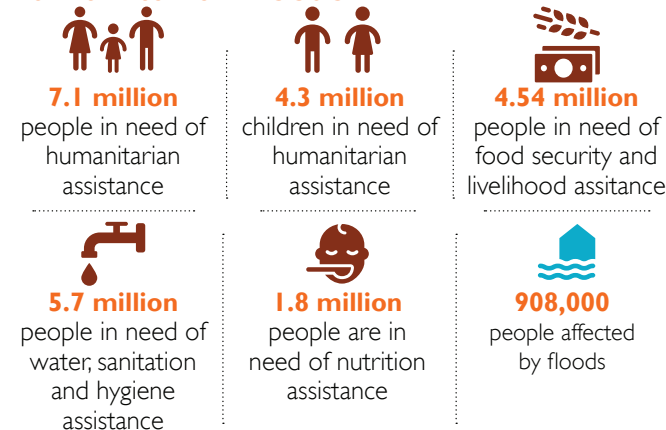
October 2019 - January 2020



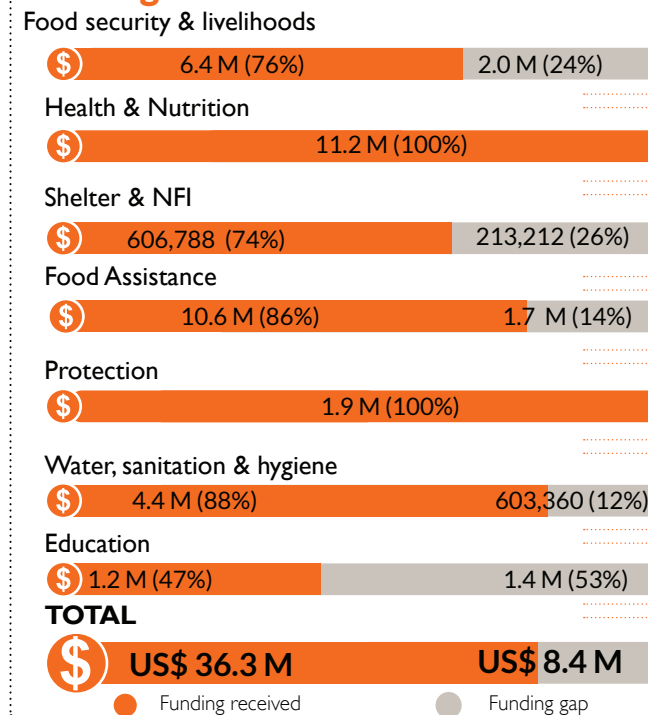
Gaps and needs

- People in need of humanitarian assistance:** The humanitarian need due to crisis in South Sudan is complex, with a combination of both man-made and natural factors increasing the vulnerability of a majority of the population. This includes flooding in Upper Nile, Western Equatoria, Central Equatoria, Eastern Equatoria due to heavy rains in August and September. An estimated 4.54 million people continue to face acute food insecurity and hence humanitarian support particularly in the form of emergency food assistance is necessary in averting the risk of starvation or worse famine.
- The returnee numbers are even expected to increase with the return of refugees due to relative peace currently experienced in South Sudan.

Humanitarian needs



Funding needs



*All financial figures in US\$

The boundaries and names shown and the designations used on these maps do not imply official endorsement or acceptance by the World Vision International

Creation date: 28 November 2019

Sources: UNOCHA, WFP, UNOPS, IPC, FEWSNET

Response highlights



FOOD SECURITY & LIVELIHOODS

- **Food assistance:** 481,341 people in Juba, Greater Upper Nile, Greater Bar el Ghazel and Unity, Jonglei and Western Equatoria received 1,472 metric tons of assorted food commodities support through general food distribution, food for education, blanket and targeted supplementary feeding programmes where they received.
- **Cash assistance:** 9,000 people benefited from \$ 66,000 USD distributed to households under conditional cash programming.
- **Household food security and livelihoods:** 1,500 people benefited from WorldVision's food security and livelihoods activities where they acquired livelihoods skills and participated in community asset restoration.



NUTRITION

- **Nutrition screening and treatment:** 10,789 children, pregnant and lactating women in Juba and Western Equatoria were screened for malnutrition where 718 identified as malnourished were enrolled for care and treatment in WorldVision supported nutrition health facilities.
- **Behavioural change messaging:** Over 7,720 caregivers learnt about maternal infant and young child nutrition appropriate hygiene practices, health seeking behaviors and appropriate nutrition through community awareness sessions and breast feeding corners at World Vision supported health and nutrition facilities.



WATER, SANITATION & HYGIENE

- **Potable water:** Over 197,000 people accessed an average of 17.6 liters of clean and safe drinking water availed through WorldVision supported safe water sources.
- **Behavioural change messaging:** 12,341 people learnt about appropriate hygiene practices such as hand washing behaviour.



HEALTH

- **Curative consultations:** 160,000 people accessed free curative consultations through World Vision supported government health facilities.
- **Vaccination:** Reached 14,633 children accessed vaccination through routine immunization programmes.
- **Ebola Virus Disease Response:** 152,470 people were screened for Ebola Virus Disease while 113,137 learnt about Ebola Virus Disease risk reduction through World Vision led static and community outreaches.



EDUCATION

- **Access, enrolment and retention:** Over 140,000 children acquired numeracy and literacy skills through World Vision supported programming through food for education, education in emergencies, accelerated learning and early childhood development programming.
- **School meals:** 116,514 school children attended World Vision supported schools across Upper Nile, Warrap and NBG received a daily meal aimed at promoting attendance, retention and completion.
- **Mine risk reduction:** 3,664 children and adults across Juba, Western Equatoria and Upper Nile attended mine risk sessions where they acquired mine awareness and risk reduction skills.



PROTECTION

- **Child Friendly Spaces:** Over 21,110 children living in Greater Bahr el Ghazal, Juba and Greater Upper Nile attended World Vision child friendly spaces where they accessed learning, participated in recreational activities and received psychosocial and protection support services.

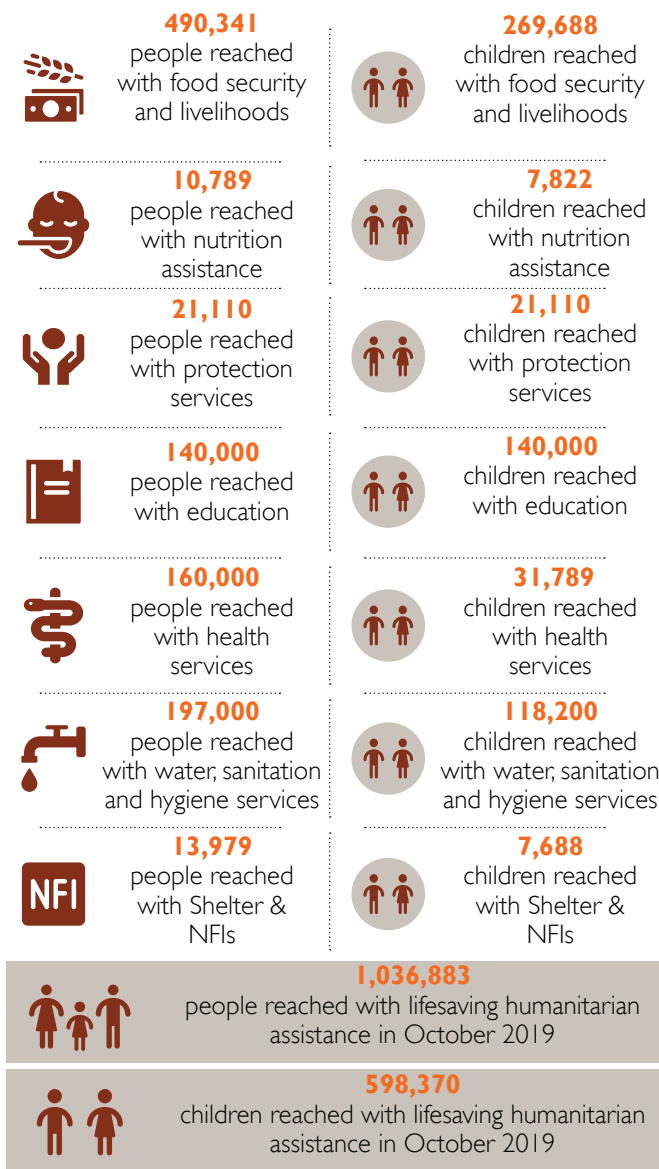


SHELTER & NFIs

- 13,979 people reached with shelter and essential household items through the floods response in Tonj North, Twic, Gogrial East and West.

Response achievements

Reporting period October 01 - October 31, 2019

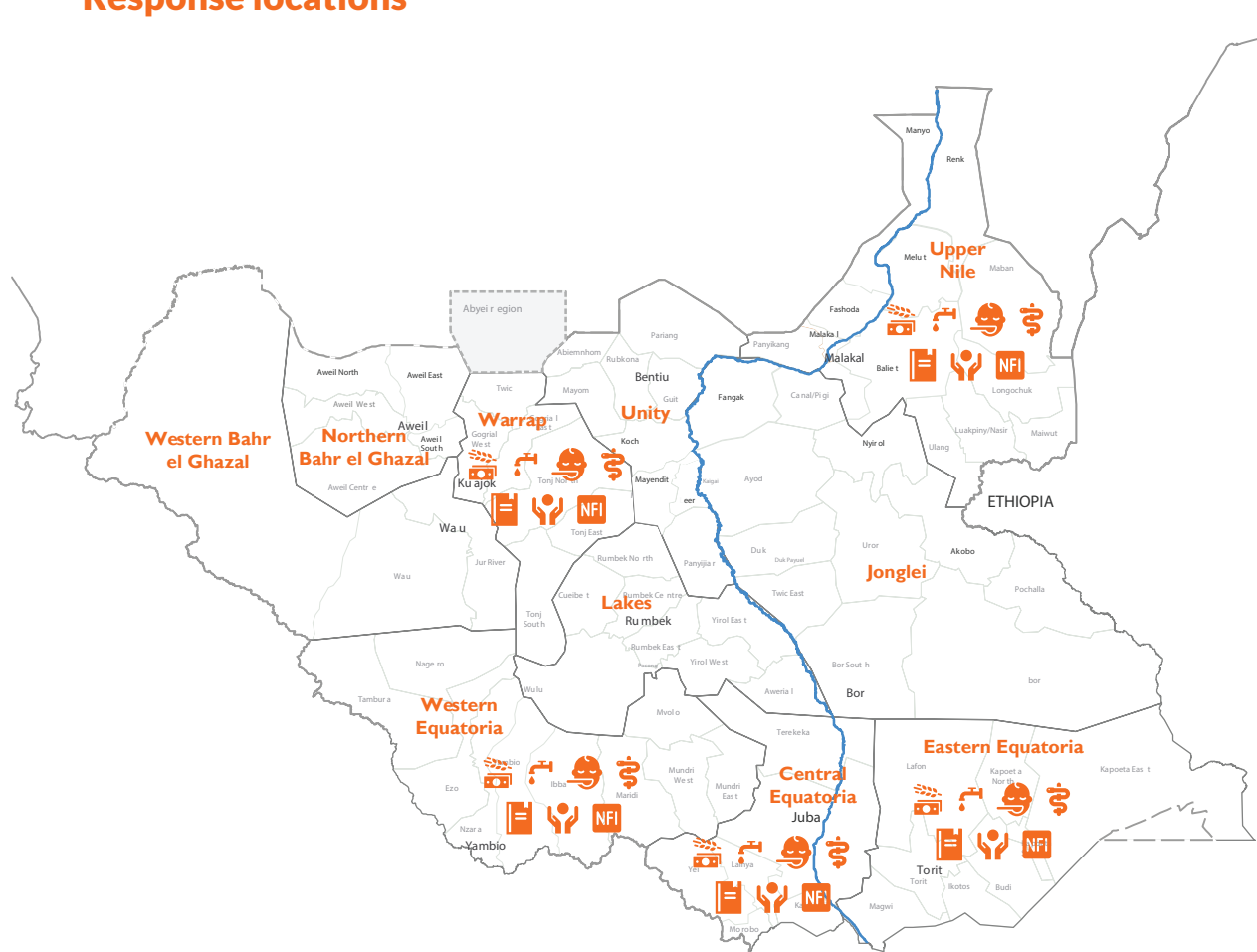


SOUTH SUDAN

SITUATION REPORT | OCTOBER 1 - OCTOBER 31, 2019



Response locations



WASH



Food Security & Livelihoods



Food Assistance



Protection



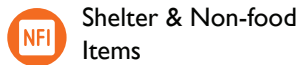
Health



Education



Nutrition



Shelter & Non-food Items

Primary contact information

Mesfin Loha

Country Programme Director
Mesfin_Loha@wvi.org
Skype: mesloha

Esatu Elilo

Interim Operations Director
Esatu_Elilo@wvi.org
Skype: esatuelilo.dula

Martin Omoro

Programme Quality & Strategy Manager
Martin_Omoro@wvi.org
Skype: martinomoro

National office donors & partners



Global Affairs
Canada

Affaires mondiales
Canada



Empowered lives.
Resilient nations.



NEW ZEALAND
FOREIGN AFFAIRS & TRADE
Aid Programme



Food and Agriculture Organization
of the United Nations



Government of Ireland



Department for
International
Development



Federal Ministry
for Economic Cooperation
and Development



USAID
FROM THE AMERICAN PEOPLE



UNHCR
The UN Refugee Agency



Government of the Netherlands



World Food
Programme



Aktion
Deutschland Hilft
Bündnis deutscher Hilfsorganisationen



Australian Government
Department of Foreign Affairs and Trade

The boundaries and names shown and the designations used on these maps do not imply official endorsement or acceptance by the World Vision International

Creation date: 28 November 2019

Sources: UNOCHA, WFP, UNOPS, IPC, FEWSNET