



## Asia Pacific Regional Situation Report

Situation Report #17 | 30 July 2020

**World Vision is responding to the impact of COVID-19 in 17 countries in the Asia Pacific, especially in places where children and families are most vulnerable.**



**COVID-19 Cases: 1,571,317**

**COVID-19 Deaths: 37,203**

(COVID-19 case and death figures for 15 countries with available data. Source: WHO, 24 July 2020)

**COVID-19 confirmed cases continue to rise in South East Asia, reaching a total of 1,571,317 reported cases and 37,203 deaths<sup>1</sup>. With the socio-economic conditions further deteriorating and estimated substantial growth downgrades<sup>2</sup>, there is no certainty about when things will return to normal.**

Several World Vision field offices are now focusing on developing recovery plans for the next phase of the response including Bangladesh, Thailand, Indonesia, Cambodia and Mongolia. Other field offices are adapting ongoing technical programmes and integrating long-term rehabilitation and resilience into their development work.

Livelihood will be the lead focus of recovery planning, since it has a significant impact on other sectors, including access to basic services and protection. World Vision's [regional recovery assessment report](#) highlights the need to support micro, small, and medium enterprises to achieve business continuity through flexible finance.

The universal access to affordable housing, healthcare, child protection, education, social protection for the most vulnerable is also of paramount importance.

Field offices are also supporting sustainable income generation opportunities for the urban poor in national and local development plans beyond the COVID-19 crisis.

### Key Messages



Invest in interventions that rebuild livelihoods and promote the inclusion of vulnerable populations and women's economic empowerment.



All stakeholders, including NGOs, government and donors must work together to support a green and resilient recovery, as the window for incorporating climate adaption and resilience building, into COVID-19 recovery planning, is short.



With the start of the monsoon season, countries should be prepared to handle major climate-related disasters during COVID-19 response and recovery.



World Vision Asia Pacific has conducted recovery assessments in 9 countries, with the participation of 26,269 people and children from 335 communities. The key findings and recommendations are presented in a [2-page infographic summary](#).

### People Reached:



**12,835,700**



**Men 3,461,635 Women 3,673,655**

**Children 5,700,410**



**Boys 2,879,569 Girls 2,820,841**

(Based on figures as of 24 July 2020)

<sup>1</sup> WHO Coronavirus disease (COVID-19) Situation Report – 185 [https://www.who.int/docs/default-source/coronavirus/situation-reports/20200723-covid-19-sitrep-185.pdf?sfvrsn=9395b7bf\\_2](https://www.who.int/docs/default-source/coronavirus/situation-reports/20200723-covid-19-sitrep-185.pdf?sfvrsn=9395b7bf_2)

<sup>2</sup> <https://www.worldbank.org/en/news/feature/2020/06/08/the-global-economic-outlook-during-the-covid-19-pandemic-a-changed-world>



## RESPONSE GOAL

To limit the spread of COVID-19 and reduce its impact on vulnerable children and families

## Strategic Objectives



1. Scale up preventive measures to limit the spread of disease



2. Strengthen health systems and workers



3. Support for children impacted by COVID-19 through education, child protection, food security, and livelihoods



4. Collaborate and advocate to ensure vulnerable children are protected

## OBJECTIVE 1: Scale up preventive measures to limit the spread of disease



**5,377,585**

People reached through promotion of preventive behaviours



**1,722,383**

Information, education, and communication materials printed and



**3,834,742**

Community members provided preventive materials



**753,706**

Handwashing supplies distributed



**1,631,942**

Comprehensive hygiene kits distributed



**4,929**

Cleaning kits distributed to vulnerable communities



**11,795**

Community-level public handwashing stations established or maintained



**547**

Water, sanitation, and hygiene facilities constructed or rehabilitated



**4,524**

Faith leaders disseminating preventive measures

(Based on figures as of 24 July 2020)

## OBJECTIVE 2: Strengthen health systems and workers



**12,265**

Community health workers trained and supported



**74,930**

Medical personnel provided personal protective equipment (PPE)



**2,979,614**

Masks distributed, including to health facilities, health workers and communities



**651,452**

Glove sets distributed, including to health facilities, health workers and communities



**1,769**

Medical facilities assisted



**103,507**

Disinfectant kits distributed to health care facilities



**7,847**

People supported with the securing of safe quarantine and/or isolation spaces



**260**

Quarantine and isolation spaces supported, rehabilitated or set-up

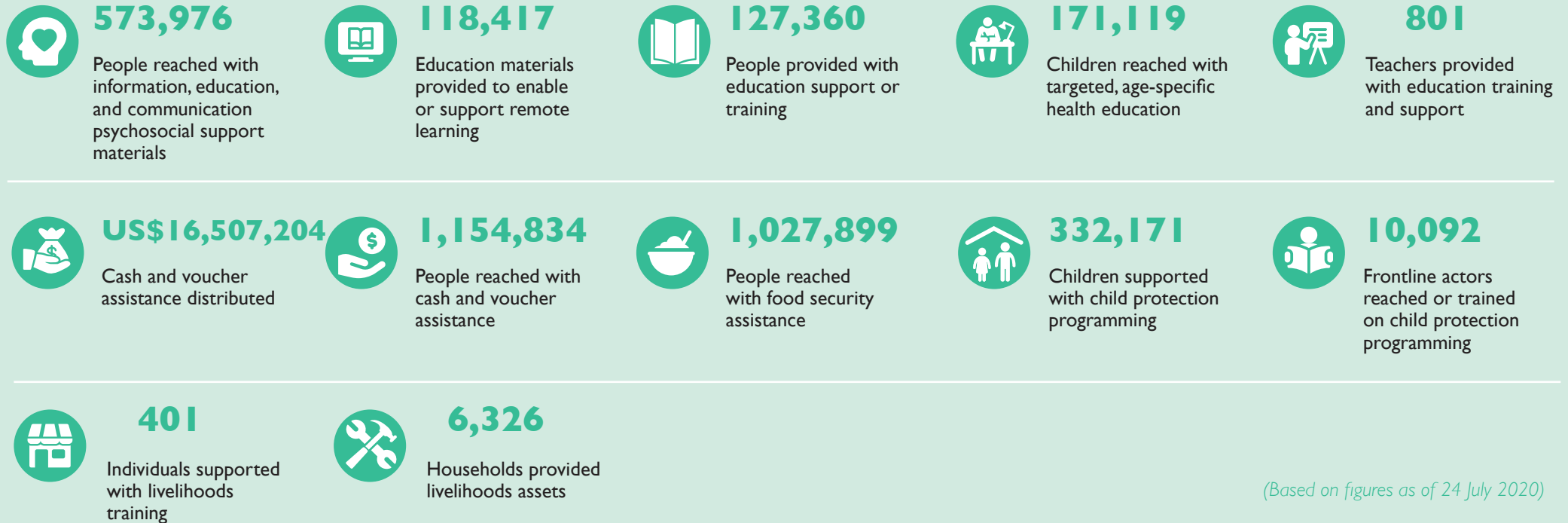


**1,373**

People provided transportation support

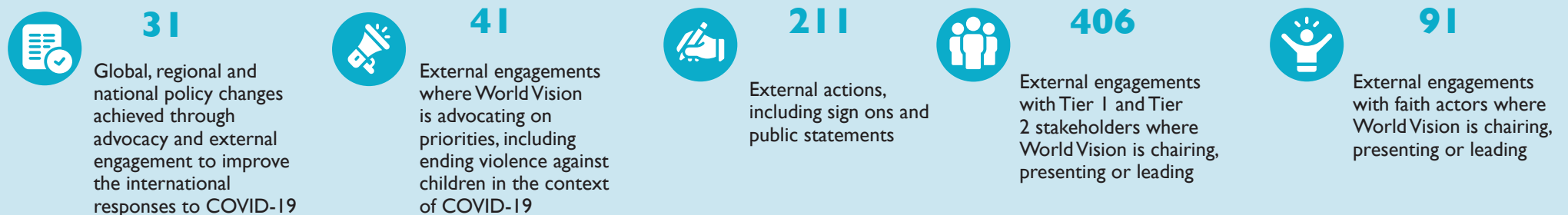
(Based on figures as of 24 July 2020)

## OBJECTIVE 3: Support for children impacted by COVID-19 through education, child protection, food security, and livelihoods



(Based on figures as of 24 July 2020)

## OBJECTIVE 4: Collaborate and advocate to ensure vulnerable children are protected



\*Examples of Tier 1 and Tier 2 stakeholders include WFP, WHO, Global Fund, UNICEF, UNHRC, UNOCHA, and national governments

(Based on figures as of 24 July 2020) 3

## Giving birth amidst a pandemic

### Stories from the frontlines

Yu, 26, is a proud mother of new born twin girls in South-West Myanmar. Managing a family of seven, that includes Yu, her husband, their elder boy, the twins and two parents, is a big challenge. Yu's husband made a living by fishing and selling the fish in the market. The twins are Yu's second pregnancy, which was unexpected.

As the COVID-19 pandemic spread and movement restrictions were imposed, Yu's fears increased. She was in her last trimester. Yu's mind was engulfed with worries about accessing ante-natal care, delivery and post-natal care.

"As we walked half an hour to the hospital through the villages, passing people, I was afraid of contracting the virus. I was worried about my unborn babies and for my health. If I contracted that virus, will I survive? Will my babies survive?" says Yu, with a tone of concern. As the due date neared, the mid-wife advised Yu to have an institutional delivery to avoid any complications arising from giving birth at home.

"I started panicking thinking about the expenses of delivering at a hospital. How could we afford it? Also, I was afraid to get coronavirus because there would be many people at the regional hospital. I was comforted when the auxiliary midwife regularly visited me at home and cared for me during my pregnancy as did my husband and my parents," says Yu.

Locking up all the concerns in her mind, Yu silently prepared everything she would need at the hospital. Yu had to also mentally prepare for her first delivery in a hospital.

"When it was time for delivery, from the village, it took one hour by boat and another one hour by car to get to the hospital. With a big belly carrying twins, hopping on a boat was not easy. The journey was rough. On the way, I felt pain and couldn't breathe well. I thought I would die. But we survived the bumpy journey," says Yu.

Another daunting reality awaited Yu at the hospital. "I knew from the ultrasound that my kids were twins but when we arrived at the hospital, the nurses said that, they could not guarantee both twins will survive and the delivery had risks for my life too. I was devastated. The labour was so painful that I thought I won't make it," says Yu.

Delivering amidst so much pain and difficulties, Yu was very glad to hear both twins were alive. One of the twins, though, was underweight and got jaundice and needed to be put in the intensive care unit. Engulfed in mixed emotions her heart sank knowing her younger child's life was in danger.

"I was very tired because I had to feed the twins separately. But now, after a month, all my pains have gone away after seeing my twins alive and healthy. When I look back it was good that I delivered my babies at the regional hospital. Otherwise, both my babies and my life would have been in danger. Since we stayed almost a month at the hospital, the expenses were high. My husband could not work due to COVID-19 since before my delivery and after I was discharged from the hospital. So, we had financial difficulties. World Vision covered transportation costs for us. It lightened our burdens and kept us out of debt," says Yu.

There has been no confirmed COVID-19 cases reported in Yu's village. However, due to the lockdown and travel restrictions, many have lost their jobs and are facing severe financial challenges. Yu's husband is one of them. Due to loss of livelihoods, mothers and children face difficulties in accessing nutritious food.

Through *Enhancing Nutrition Services to Improve Maternal and Child Health* project activities, like the one in Yu's community, mothers are aware of how to take care of themselves and their kids and how to prepare nutritious food for their children. Mothers regularly consult health workers regarding their health and the health of their children. The connection between the community and the health department has also improved.

"Thanks to World Vision and the donors who have provided us with such knowledge and support on ways to connect to the health department and take care of our children's health," says Yu.







## BANGLADESH

- World Vision has reached over 3,268,000 people, including 1,467,000 children, through response initiatives.
- World Vision conducted a lessons learning event, in June, to conclude the first phase of the emergency response and to kick start the early recovery phase in July.
- Over 300 staff contributed to the learning event by identifying significant learnings, best practices, gaps, challenges, and listing out recommendations based on phase one of the field implementation experience. The learning will inform the design of the early recovery phase and for improving future implementation.
- World Vision has completed its recovery assessment. 2,761 households, 1,616 children and 273 key stakeholders participated in the assessment. The summary brief of the finding can be accessed [here](#).



## CAMBODIA

- World Vision has reached over 884,000 people, including 345,000 children, through response initiatives.
- World Vision is moving into phase two of the response and early recovery, and is conducting post-implementation monitoring.
- World Vision has completed its recovery assessment. 222 households, 238 children and 42 key stakeholders participated in the assessment. The summary brief of the finding can be accessed [here](#).



## CHINA

- WorldVision has reached a total of 1,037,000 people, including 702,000 children, through response initiatives.
- World Vision will incorporate recovery activities into technical programme adaptations and its 90-day achievements are summarised in [this video](#).
- World Vision is currently responding to floods in China.

*China: World Vision staff speak to villagers housed in a temporary shelter for villagers affected by the flooding in Pengze County*



## INDIA

- World Vision has reached over 3,566,000 people, including 1,248,000 children, through response initiatives.
- World Vision is moving into phase two of the response and early recovery, and has summarised its key relief response achievements in the 90-day-response report, which can be accessed [here](#).
- World Vision has completed its recovery assessment. 5,668 households, 5,595 children and 1,032 key stakeholders participated in the assessment. The report can be accessed [here](#).



## INDONESIA

- World Vision has reached over 788,000 people, including 219,000 children, through response initiatives.
- World Vision is moving into phase two of the response and early recovery, and has summarised its key relief response achievements in the 90-day-response report, which can be accessed [here](#).
- World Vision has completed its recovery assessment. 900 households, 943 children and 15 key stakeholders participated in the assessment. The report can be accessed [here](#).



©World Vision



## LAOS

- World Vision has reached over 59,000 people from 9 districts, including 25,300 children, through response initiatives.
- World Vision has moved into phase two of the response and early recovery and has started rolling out cash-based recovery interventions for 1,718 households.
- World Vision has completed its recovery assessment. 214 households and 72 children participated in the assessment. The summary of the findings can be accessed [here](#).



## MONGOLIA

- WorldVision has reached a total of 232,000 people, including 88,200 children, through response initiatives.
- World Vision has started its recovery phase intervention and continues to engage with producer groups to improve access to sanitation and hygiene facilities by installing eco-toilets and hand-washing facilities for households and schools in Chingeltei, Khan-uul, Songinokhairhan and Bayanzurkh districts.
- World Vision has completed its recovery assessment. 489 households, 47 children and 122 key stakeholders participated in the assessment. The report can be accessed [here](#).



## MYANMAR

- World Vision has reached over 778,000 people, including 605,000 children, through response initiatives.
- World Vision will incorporate recovery activities into technical programme adaptation. Its July infographic summary can be found [here](#).
- World Vision has completed its recovery assessment. 767 households, 386 children and 433 key stakeholders participated in the assessment. The report can be accessed [here](#).



## NEPAL

- World Vision has reached over 119,000 people, including 73,000 children, through response initiatives.
- World Vision is moving into phase two of the response and early recovery, and continues to support children protection needs by providing case management and psychosocial support, as well as agricultural inputs and livelihood recovery support.
- World Vision has completed its recovery assessment. 836 households, 813 children and 126 key stakeholders participated in the assessment. The summary brief of the finding can be accessed [here](#).



## PAPUA NEW GUINEA

- World Vision is now finalising the findings of its recovery assessment. 151 households and 120 children participated in the assessment.
- The top two most critical problems currently faced by communities, identified by households, were WASH and livelihoods. 15.9% of the households reported that their ability to carry out livelihood activities were affected in the past two weeks, while all remaining families reported experiencing some sort of disruption.
- World Vision continues to integrate COVID-19 sensitisation in all its activities and via house-to-house outreach. Further details can be seen [here](#).

Nepal: Hygiene kits are distributed to community members in Kathmandu





## PHILIPPINES

- World Vision has reached over 592,000 people, including 305,000 children, through response initiatives.
- World Vision will incorporate recovery activities into technical programme adaptations and has summarised its key relief response achievements in the Three-Months-On Report, which can be accessed [here](#).
- World Vision has completed its recovery assessment. 423 households & 422 children participated in the assessment. The report can be accessed [here](#).



Philippines: World Vision distributes gardening implements and seed in an urban community in Mindanao to help ensure food security



## SOLOMON ISLANDS

- World Vision continues to integrate COVID-19 sensitisation in its development programming and its Cyclone Harold Response.
- Since April, World Vision has been working together with the Ministry of Health, as well as National and Provincial Emergency and Disaster Preparedness Committees to conduct COVID-19 awareness activities to sensitise more than 40 rural communities in Honiara city, central and north-eastern Guadalcanal and Makira province.



## SRI LANKA

- World Vision has reached over 264,000 people, including 93,800 children, through response initiatives.
- World Vision has completed its recovery assessment. 2,190 households, including 225 families with a child with disability and 218 with adult with disabilities participated in the assessment. The summary brief of the finding can be accessed [here](#).
- World Vision, as a member of National Action and Coordination Group, advocated to the Government Media Unit to address the gap in the COVID-19 risk communication strategy, which does not cater to hearing-impaired children and people, who have challenge accessing COVID-19 related news, preventive messages and programmes. As a result, the Government now includes sign language in its sensitisation programmes and preventive messages on TV.



## THAILAND

- World Vision has reached over 194,000 people, including 180,000 children, through response initiatives.
- World Vision is moving into phase two of the response, early recovery, and has summarised its key relief response achievements in the 90-day-response report, which can be accessed [here](#).
- World Vision is now finalising the findings of its recovery assessment. 1,101 households, 1,112 children and 110 key stakeholders participated in the assessment.



## TIMOR-LESTE

- World Vision has reached over 63,500 people, including 27,700 children, through response initiatives, in Aileu, Baucau, Bobonaro and Covalima.
- World Vision is now finalising the findings of its recovery assessment. 153 households participated in the assessment.





## VANUATU

- World Vision continues to integrate COVID-19 sensitisation in its development programming and its Cyclone Harold Response.
- World Vision has reached over 16,400 people, including 8,360 children.
- World Vision's response work is summarised and captured in [this video](#).



## VIETNAM

- World Vision has reached over 555,000 people, including 318,000 children, through response initiatives.
- World Vision is now finalising the findings of its recovery assessment. 3,431 households and 3,425 children participated in the assessment.



Bangladesh: With schools closed since March 17th, Maria plays the role of a teacher for her 8 year old son, Arpan

We would like to thank our generous donors, partners, and supporters including:



FOR FURTHER INFORMATION, PLEASE CONTACT:

**Meimei Leung**  
Regional Humanitarian Emergency Affairs Director  
Asia Pacific Region  
[meimei\\_leung@wvi.org](mailto:meimei_leung@wvi.org)

**Neville Wepener**  
Resource Development Director  
Asia Pacific Region  
[neville\\_wepener@wvi.org](mailto:neville_wepener@wvi.org)

**Annila Harris**  
Humanitarian Emergency Communications  
Asia Pacific Region  
[annila\\_harris@wvi.org](mailto:annila_harris@wvi.org)