

WORLD VISION

MIDDLE EAST AND EASTERN EUROPE

**FRAGILE
CONTEXTS
FRAGILE
CHILDHOODS**



Fragile contexts are those where the government cannot, or will not, fulfil its responsibilities to protect and fulfil the rights of the majority of the population, particularly the poor.



@WorldVisionMEER



@WVMEERO

Serving the most vulnerable children in the toughest places, World Vision is leading the way in contexts of high fragility and gender disparity, supporting children on the move and affected by armed conflict, in a region beset by climate change and now a global pandemic.

We have been working in the Middle East and Eastern Europe for more than 45 years and currently have long-term development projects in Albania, Kosovo, Armenia, Georgia, Bosnia, as well as Jerusalem-West Bank-Gaza and Lebanon.

We also partner with organisations to support the needs of those children and their families affected by increased violence in Syria, Lebanon, Jordan, Turkey, Iraq, Afghanistan and Yemen.

FACTS

MEER includes

3 of the top 4

source countries for the world's global refugee population

MEER is the source of more than

50%



of the world's refugee population

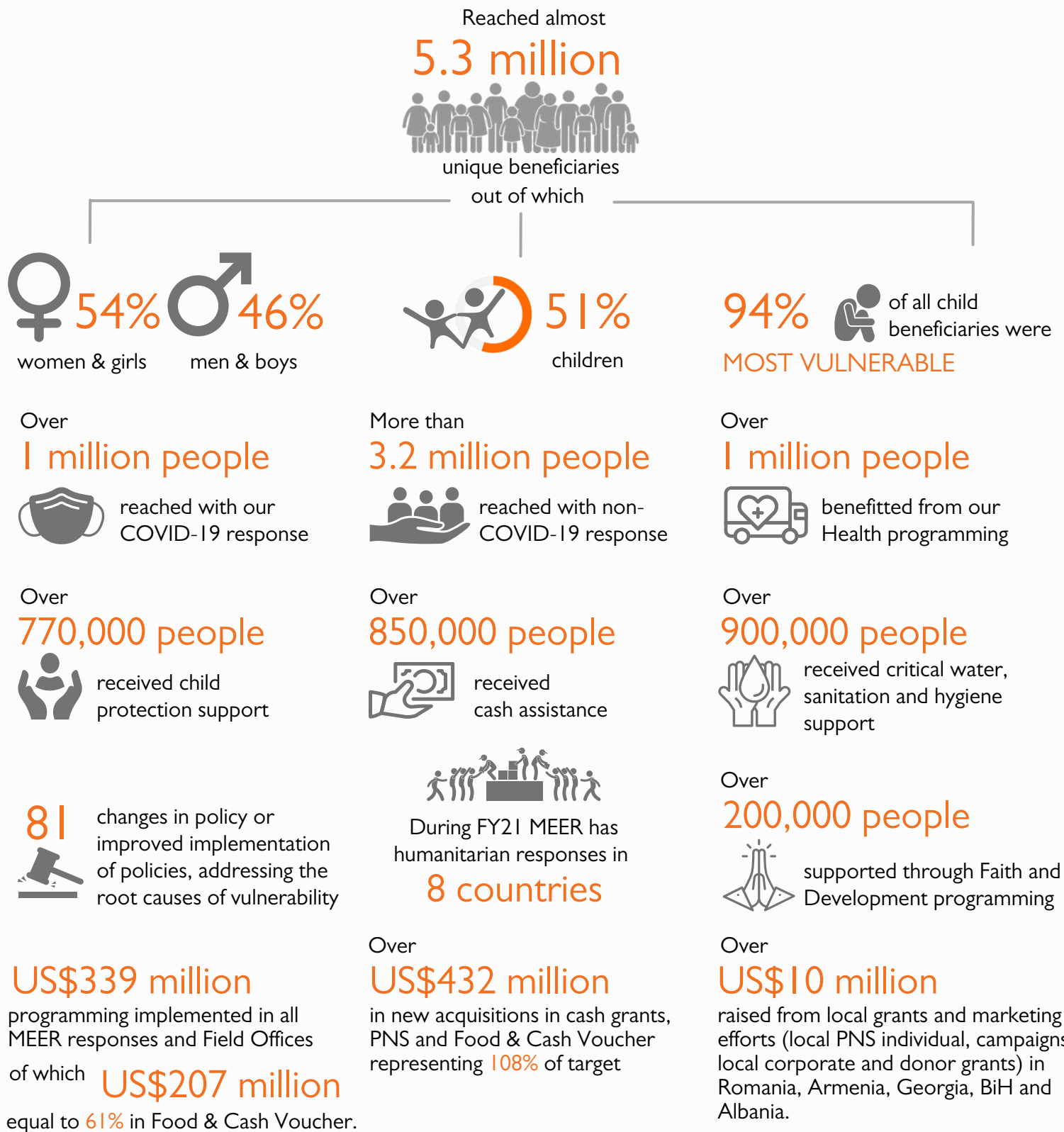
1 in 3

children in MEER live in horrific situations of war, conflict and violence.

CONTACT & FOLLOW US

Leah Donoghue, Regional Communications & Advocacy Director, email: leah_donoghue@wvi.org

FY21 FACTS & FIGURES



FY22 TARGETS

Estimated total reach of
4.7 million
unique beneficiaries

of which
1.2 million



will be reached with our COVID-19 response



57%
of which
will be children



97%
of these children will be
MOST VULNERABLE

of which
3.7 million



will be non-COVID-19 response beneficiaries

Largest donors:



Bundesministerium für wirtschaftliche Zusammenarbeit und Entwicklung

Where we work and some of the fragilities we face

FRAGILE CONTEXTS FRAGILE CHILDHOODS

Across MEER, we work in a range of countries that are the Source, Transit and Destination of Children on the Move.



WORLD VISION BOSNIA & HERZEGOVINA

frozen conflict, children on the move, violence against children



WORLD VISION ALBANIA & KOSOVO

violence against children, access to equal education, protection and employment opportunities for vulnerable adolescents, ethnic tension, civic engagement



WORLD VISION ROMANIA

children living in extreme poverty, lack of access to education of vulnerable children, violence and sexual abuse against children, human trafficking, political instability



WORLD VISION GEORGIA

poverty, violence against children, institutionalized children, street connected children, community empowerment



WORLD VISION ARMENIA

violence against women and children, border tension, ceasefire violations



WORLD VISION AFGHANISTAN

hunger crisis, poverty, conflict, political instability, gender inequality, violence against women and children



WORLD VISION IRAQ

ongoing tensions and potential for conflict, food insecurity, water scarcity, violence against women and children, poverty, child labour, children on the move



WORLD VISION JERUSALEM - WEST BANK - GAZA (oPt)

ongoing occupation and conflict, violence against children



WORLD VISION LEBANON

severe economic crisis, children on the move, violence against children, poverty and food insecurity, volatile security situation and/or conflict prone areas



WORLD VISION SYRIA RESPONSE - SYRIA - TURKEY - JORDAN

ongoing conflict, children on the move, unprecedented violence against children, economic fallout

WORLD VISION YEMEN

famine, world's worst humanitarian crisis, 20.7 million people in need of assistance, out of which 54% are children

Why work with World Vision MEER?

- Capacity to **respond to emergencies** in each country of the region according to international standards
- Support for **local level innovation** in institutional grant acquisition and management with **expertise in 20 donor countries** across Asia, Europe and North America.
- **State of the art security**, anti-fraud and risk management capability
- Consortium leadership, remote monitoring and **partnering at local level**.
- Proven ability to bring **field-led advocacy** priorities to global stakeholders in Brussels, Geneva and New York and other back donor capitals.
- Staff and systems capacity to disperse over **US\$207 million of cash-based programming** through a range of transfer modalities, including in fragile contexts.
- **Sector leading Food Assistance systems** and surge capacity that support a Global US\$545 million Food Assistance portfolio.



HEALTH



CHILD
PROTECTION



WASH



EDUCATION



LIVELIHOOD