

Situation Overview

Fighting between the Sudan Armed Forces (SAF) and the Rapid Support Forces (RSF) erupted on 15 April 2023 in Khartoum, the capital city of Sudan, following days of tension. Fighting between the SAF and RSF continues despite several attempts at extended ceasefires. The dispute centers around a proposed transition to civilian rule.

According to the Federal Ministry of Health (FMOH) at least 676 have been killed and 5,576 injured since April 15th. Over 18 health and humanitarian workers are among those that have been killed. In addition, the UN is reporting that inter-communal violence in West Kordofan on 8 May resulted in 25 more deaths and left 90 people injured. In

White Nile, FMOH reported that disputes in Kosti City resulted in the deaths of 29 people and 40 injured. Some UN & INGO offices, including World Vision office in Nyala South Darfur have been forcibly broken into, with equipment stolen and offices ransacked. On 16th April, World Vision temporarily suspended its field operations and requested all staff to hibernate. World Vision remains deeply concerned for its staff and the children and communities we serve in Sudan.

On 2nd May, World Vision declared the conflict a CATIII emergency and announced the launch of the Sudan Crisis and Migration Emergency Response (SCRAMER).

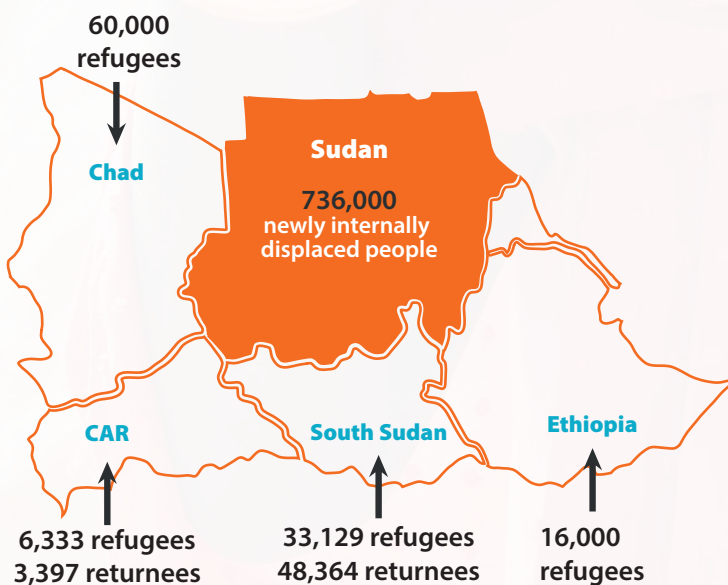
Contextual Information

Sudan sits within WV's fragile context portfolio and has ongoing profound humanitarian needs. The situation was aggravated by poor macroeconomic conditions, high inflation and the rolling coup d'état of 2019 that overthrew the long-term military ruler (President Omar Al-Bashir). This was followed by the October 2021 coup d'état led by General Abdel Fattah al-Burhan of the Sudan Armed Forces and Lieutenant General Mohamed Hamdan Dagalo (aka Hemedti) the leader of the RSF.

Internal and external pressure to return to civilian rule led to disagreements between the two generals, resulting in the violence that broke out in Khartoum. Since the outbreak of the war, there have been mass evacuations of

diplomatic missions, foreign nationals, and civilians. World Vision has worked in Sudan since 1988 and over the past year alone, has reached more than 1.5 million people, mostly women and children, with emergency assistance, including with interventions in food security, child protection, health and nutrition and water, sanitation and hygiene (WASH).

Apart from our temporarily suspended operations in Sudan, World Vision has presence in Chad, Central African Republic, Ethiopia and South Sudan and we are at varying stages of responding to the needs of people fleeing into these countries.



Numbers as of May 15th 2023

According to UNOCHA, as of 15th May 2023, over 936,000 people have been newly displaced by the conflict, fleeing either to other parts of the country or to neighbouring Chad, Central African Republic, Egypt, Libya, Ethiopia, South Sudan.

In Chad about 500 people are reported to be crossing the border every day. As of May 15, 60,000 had crossed into the country from Sudan. Over 200,000 people have already fled the country while an estimated 736,000 are newly displaced within Sudan, spread across 12 camps in the East.

Approximately 10,000 people, including 3,397 Central African returnees from Sudan have crossed the border to Am-Dafock in the Northern Region of the country. In South Sudan, UN reports current arrival over 51,000 mainly South Sudanese returnees and some refugees. In Ethiopia, the new arrivals are approximately 16,000. WV anticipates that these numbers will increase significantly over the coming days and months.



Source - **UN-OCHA**

World Vision Response

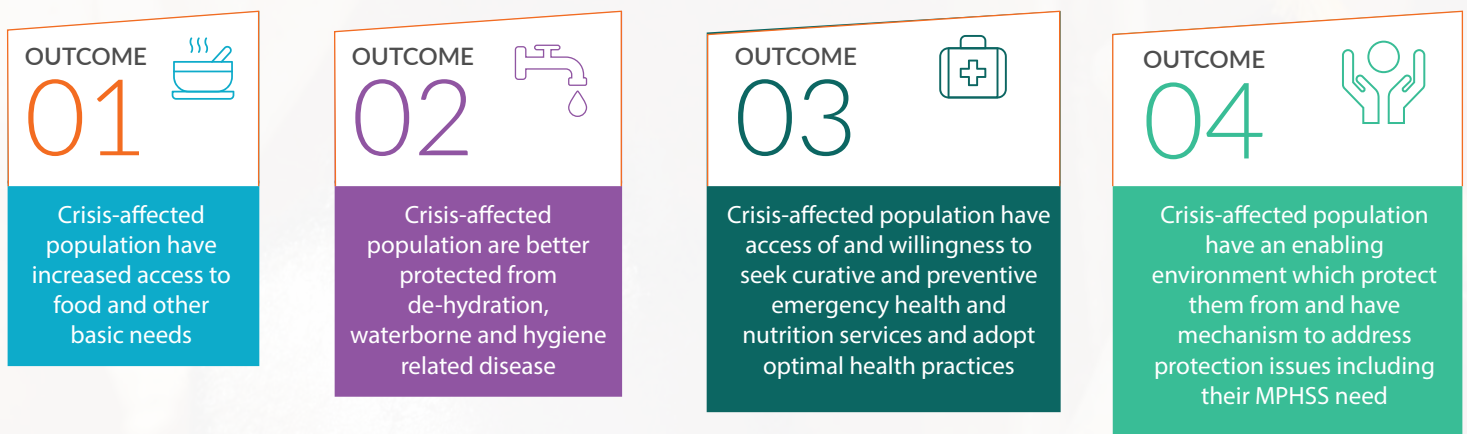
World vision will run an intial 6-month response plan.

Programming in Sudan has been temporarily suspended. However, in-country assessments are being conducted to establish if operations can restart in some areas, including pre-positioning for the response in places like Port Sudan. World Vision has been participating in inter-agency meetings in impacted countries and participating in various consortia in Chad, Central African Republic, Ethiopia and South Sudan. Proposal processes have started, and approaches made to donors to allow reallocation of resources to meet refugee arrival needs. World Vision is also participating in or leading, multi-agency assessments on refugee arrivals in the different countries mentioned above. A response director has been appointed and will be based in Nairobi for now.

Response Goal

To address life-saving need of Sudan conflict-affected population, including but not limited to IDPs, refugees, returnees and vulnerable host communities, to safeguard their right to life with dignity and well-being, especially the most vulnerable groups.

Response Outcomes



Programming of World Vision in Sudan has been temporarily suspended. However, in-country assessments are being conducted to establish if operations can restart in some areas, including pre-positioning for the response in places like Port Sudan. On 2nd May World Vision declared a multi-country response to cater to the needs of both internally displaced people in Sudan and those that had fled into neighbouring countries. World Vision has been participating in inter-agency meetings in impacted countries and participating in various consortia in Chad, Central African Republic, Ethiopia and South Sudan. World Vision is also participating in or leading, multi-agency assessments on refugee arrivals in the different countries mentioned above. A Response Team has been appointed and is currently operating from Nairobi, with the capacity to deploy into Sudan as soon as it is safe to do so.

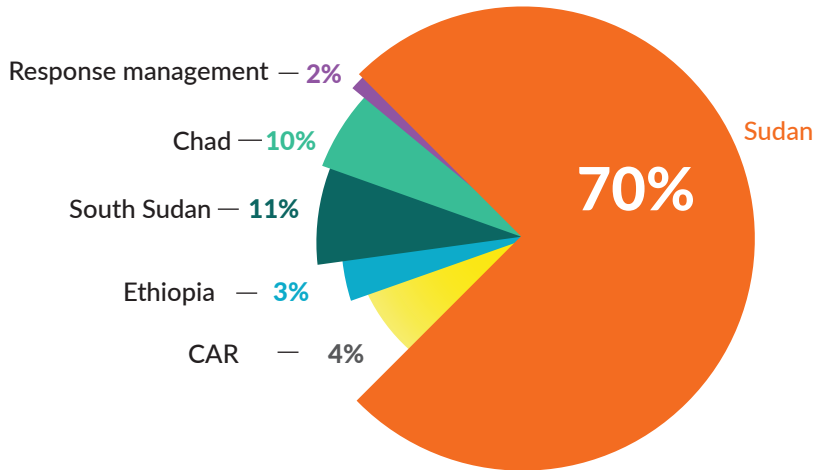
In Chad an Initial allocation of \$100K to start the response with Child Protection and WASH is in progress. World Vision also reopened a field Office in Abeche starting May 2nd and has been organizing logistics for staff on the ground, with a response plan under preparation for 25,000 refugees and about 10,000 from host communities/returnees. World Vision is also seeking new relief funding for all affected countries, including Sudan.



Budget

In the coming 6 months, the response will require USD 45.1 million to address the immediate need. This figure will be revised as situation unfold. The WV Sudan office will take up majority of the resource (70%) followed by South Sudan (11%), Chad (10%), CAR (4%) and Ethiopia (3%). The response management portion is to support the overarching structure that support the cross-countries coordination, strategy development and technical support. This is now stand as 2% of the total budget which may go up to 5% should the Sudan in-country response kick-in, depending on need.

Preliminary Budget Breakdown per implimenting countries



Planned Response Priority Areas

WV will provide multi-sectoral support to crisis-affected populations including Food Security (FS), WASH, Health and Nutrition (H&N), Protection integrating with Mental Health and Psychosocial Support (MPHSS) and NFI & Shelter with different sectoral focus among the 5 responding offices depending on the need observed on the ground and other agencies presence.

The following tables indicates the sector of focus of each responding office:

Country	Sector				
	Food Security	WASH	Health \$ Nutrition	Protection	NFI & Shelter
Sudan	●	●	●	●	●
South Sudan	●	●	●	●	●
Ethiopia		●	●	●	
Chad	●	●	●	●	●
CAR	●	●		●	●

Contact Details

Jeff Wright
 SCRAMEER Response Director
Jeff_Wright@wvi.org

Ganzi M. Isharaza
 SCRAMEER Response Communications Manager
Ganzi_Isharaza@wvi.org