

Situation Overview

Fighting between the Sudan Armed Forces (SAF) and the Rapid Support Forces (RSF) erupted on 15 April 2023 in Khartoum, the capital city of Sudan, following days of tension. The dispute centers around a proposed transition to civilian rule.

The conflict in Sudan has entered its eighth week, with fighting continuing in multiple locations, despite the ceasefire which went into effect on 22 May. As a result, humanitarian access to most places remains extremely low.

According to the Federal Ministry of Health (FMOH) more than 730 people have been killed and approximately 5,550 injured since April 15th. UN Migration (IOM) through its Displacement Tracking Matrix estimates that over 1,210,214 million people (242,666 households) have been displaced while another 425,482 individuals have neighbouring

countries – namely Egypt, Libya, Chad, Central African Republic, South Sudan and Ethiopia. Half of these are children. The majority of refugees arriving in neighbouring countries (64%) are Sudanese nationals while the rest (36%) are largely returnees and nationals of neighbouring countries. The most critical and urgent areas of need for both Internally displaced people and refugees remain food, health and emergency shelter.

Since May 2nd when World Vision declared the conflict a CATIII emergency and announced the launch of the multi-country Sudan Crisis and Migration Emergency Response (SCRAMER), operational presence has been established in all five countries, including Sudan. The main activities currently engaged in are the distribution of food and non-food items.

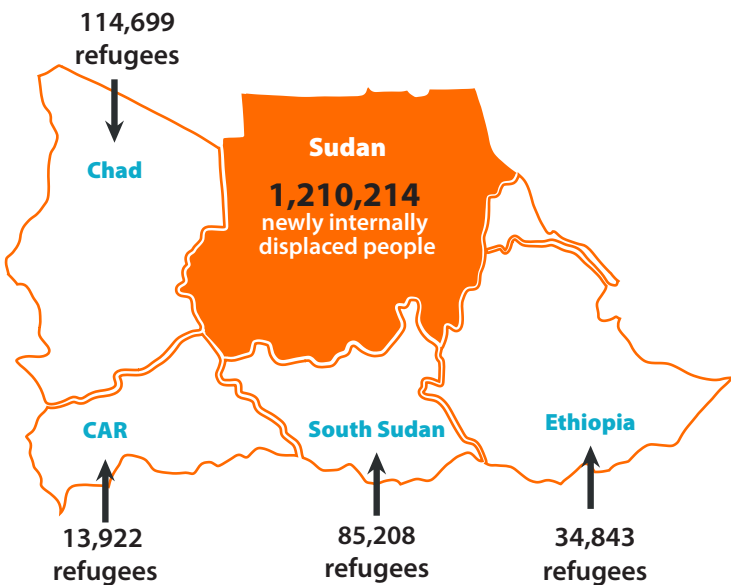
Contextual Information

Sudan sits within WV's fragile context portfolio and has ongoing profound humanitarian needs. The situation was aggravated by poor macroeconomic conditions, high inflation and the rolling coup d'état of 2019 that overthrew the long-term military ruler (President Omar Al-Bashir). This was followed by the October 2021 coup d'état led by General Abdel Fattah al-Burhan of the Sudan Armed Forces and Lieutenant General Mohamed Hamdan Dagalo (aka Hemedti) the leader of the RSF.

Internal and external pressure to return to civilian rule led to disagreements between the two generals, resulting in the violence that broke out in Khartoum.

Since the outbreak of the war, there have been mass evacuations of diplomatic missions, foreign nationals, and civilians. World Vision has worked in Sudan since 1988 and over the past year alone, has reached more than 1.5 million people, mostly women and children, with emergency assistance, including with interventions in food security, child protection, health and nutrition and water, sanitation and hygiene (WASH). World Vision has partially resumed its operational presence in Sudan.

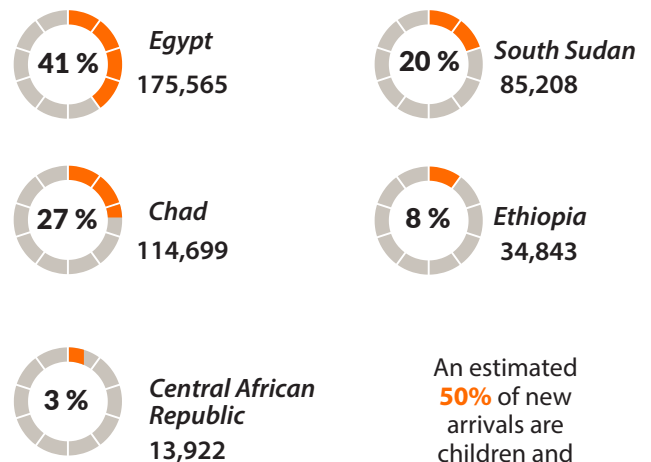
WV also has operational presence in Chad, Central African Republic, Ethiopia and South Sudan and we are at varying stages of responding to the needs of people fleeing into these countries.



Numbers as of May of 3rd June 2023

Refugee Caseload distribution as of 3rd June 2023 (Graphic Representation)

The majority of arrivals were reported in:



An estimated **50%** of new arrivals are children and **55%** are female.

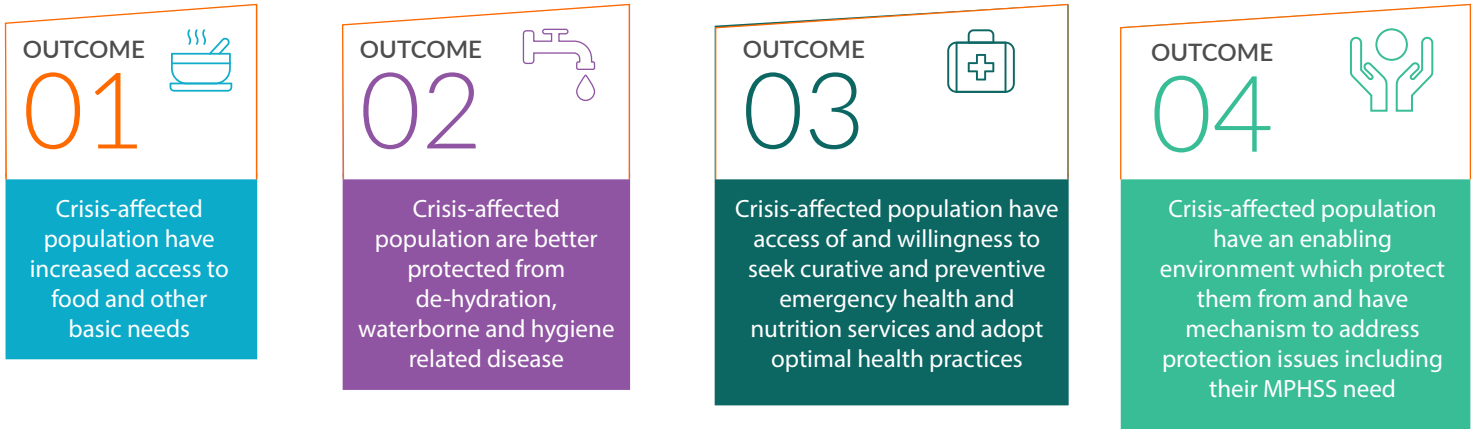


Source - **OCHA**

Response Goal

To address life-saving need of Sudan conflict-affected population, including but not limited to IDPs, refugees, returnees and vulnerable host communities, to safeguard their right to life with dignity and well-being, especially the most vulnerable groups.

Response Outcomes



World Vision Response



Our operations in Sudan continue to be limited to areas deemed safe to work in, with local communities and locally-based staff resuming the distribution of food to community members that were registered before the conflict began in April. Overall, since 25th May, we have distributed a total of 602 metric tonnes of food to 100,234 people, including 31,535 children. The specific areas in which food was distributed include: Rashad, Kadugli, Dilling, Algoz, Gereida and Kass, Tajmala, Abu Gebehia and El Tadmon.

We have also successfully deployed a representative to the Port-of-Sudan, for representational and coordination purposes with the UN and other humanitarian organisations.



Chad continues to have the highest caseload of Sudanese refugees within the Response countries. To date, over 114,699 people, mostly women and children have crossed into the country, putting even more pressure limited resources and capacity among host communities, government and humanitarian agencies in the country. The majority of these are being hosted in Ouaddai, Sila and WadiFira.

Authorities have urged the UN and other humanitarian organisations to help with the immediate relocation of the refugees from the border-crossing points over the coming weeks before the rain season peaks. Any delays risk may further endanger the refugees given that the rains cut off all road access to the border-crossing points. As of 4th June, 10,793 refugees have been moved from the border area to the three host provinces.

Plans are also underway to open two new camps In Ouaddai and Sila. Further, WV has identified Food Assistance, Water, Sanitation and Hygiene (WASH) and Child Protection as the most critical areas of intervention and has already started responding. So far, 593 households have been provided with Non-Food Items (NFIs) and we have built 27 latrines In Kounougou and Birak.

We have also set up child-friendly places and provided psychosocial support to 351 children, including 212 girls.



South Sudan

WV South Sudan Operations in Upper Nile state's Malakal remain suspended since 29th May due to escalating tensions between communities there. Exception to this suspension has been made for critical life-saving interventions such as provision of food assistance and water, sanitation, and hygiene services to returnees at the Malakal temporary reception/transition center.

In Bahr-el-Gazel, we have delivered 9 metric tonnes of Vitameal, a nutritional supplement that will be distributed to about 9,000 malnourished children beginning the week of 9th June. Staff have also been trained in using the new tool of tracking & registration of new arrivals at the borders. WV is set to recruit and deploy 13 additional data Clerks to go to the border points as well as continue with profiling of returnees and refugees (registration & verification)

Distribution of Non-Food Items (NFIs) continued, with a total of 362 households receiving blankets, mosquito nets, sleeping mats, soap, solar lamps, jerrycans, sanitary pads and kitchen sets. We also continue to monitor the transportation of returnees to their places of origin, ensuring that no harm is done to them in the process.



Ethiopia

World Vision Ethiopia officially began its response operations on 1st June, distributing cash to 115 returnees, enabling them to resettle and afford basic needs such as food, shelter, transportation and healthcare. The relief, which averaged USD 130 per person, was primarily aimed at pregnant and lactating women, people with disabilities, gender-based violence survivors, the elderly and people with chronic diseases.

We are currently also working with the Ethiopian government's Refugees and Returning Service to determine how best to assist the over 34,843 refugees that have crossed over.



Central African Republic

Our response in Central African Republic continues to be centred around provision of food, WASH, Health as well as protection services to both returnees and refugees from Sudan. Relocation of refugees from the border area, which is highly insecure to Birao is being planned and we are working closely with UNHCR, the government and other partners to operationalise this.

12,000 mosquito nets worth \$69,185 are also being distributed to an estimated 18,000 people, 10,500 of whom are children.



Budget

In the coming 6 months, the response will require USD 42 million to address the immediate needs of those displaced by the conflict. The WV Sudan office will take up majority of the resource (70%) followed by South Sudan (11%), Chad (10%), CAR (4%) and Ethiopia (3%).

So far, a total of USD 1,570,000 has been committed against this budget, \$740,000 repurposed and USD 7,201,800 currently being applied for.

Fund Status	CAR	Chad	Ethiopia	South Sudan	Sudan	Grand Total
Confirmed	84,500	240,000	71,500	860,000	1,054,000	2,310,000
Proposals being prepared	906,300	2,077,880	1,001,700	1,969,500	1,196,420	7,201,800
Grand Total	990,800	2,317,880	1,123,200	2,829,500	2,250,420	9,511,800

The current funding (both confirmed applied for) is being sourced from the following 10 offices: Chad, Germany, Global Centre, Korea, New Zealand, Netherlands, Switzerland, Taiwan, Japan, Germany and the United States.

Funding Office	Grand Total
Chad	100,000
Germany	6,351,800
Global Centre	1,000,000
Korea	200,000
New Zealand	20,000
Taiwan	150,000

Funding Office	Grand Total
Switzerland	50,000
Japan	50,000
TBCo	300,000
WVUS	50,000
Netherlands	500,000
Multiple	740,000

Grand Total: 9,511,800



Contact Details

Jeff Wright
 SCRAMER Response Director
Jeff_Wright@wvi.org

Ganzi M. Isharaza
 SCRAMER Response Communications Manager
Ganzi_Isharaza@wvi.org