



What is the Mesoamerican Dry Corridor?

The Dry Corridor is a strip of land spanning more than 150,000 km², stretching from southern Mexico to Panama, and home to over 20 million people. It covers 44% of Meso America's territory and is characterized by a population in which **73% live in poverty, with livelihoods primarily dependent on agriculture and natural resource management**. Additionally, the region is severely affected by hurricanes, social conflicts, violence, and a lack of development opportunities.

If Meso America Dry Corridor were a country...

It would be the most climate-vulnerable in the world. Here, the environmental crisis is not a future threat—it is a daily emergency. Children grow up facing droughts, hunger, and climate-induced migration. Over **7 million people suffer from severe food insecurity**. A combination of prolonged and more intense droughts, irregular rainfall, soil degradation, loss of forest cover, and limited access to water has intensified forced migration. It is estimated that **3.9 million** inhabitants could be forced to migrate due to climate change, worsening rural unemployment and child malnutrition.

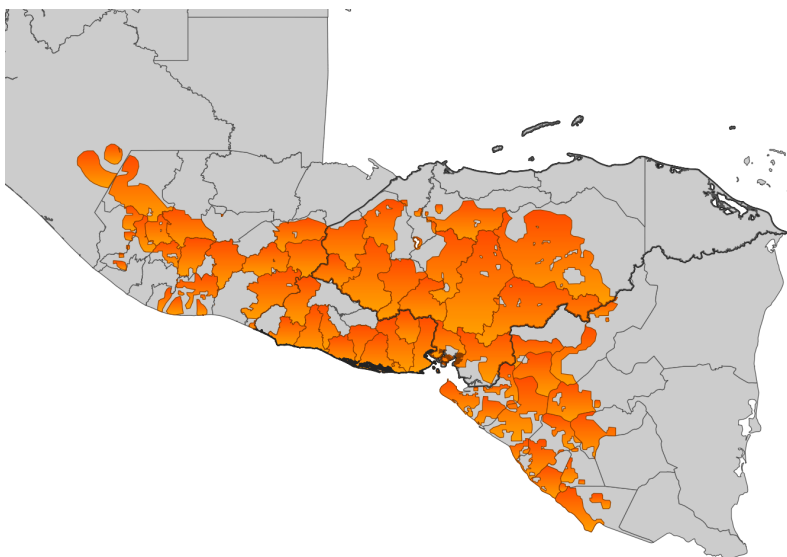
Our Proposal:

Hope in the Dry Corridor – A Transformative Regional Initiative

World Vision aims to connect multiple stakeholders to strength the resilience of **10 million people** and making them protagonists in the construction of resilient, prosperous and sustainable communities where opportunities and hope materialize for every child and their families while also contributing to the restoration of **3 million hectares** that provide vital eco system services for the communities of the Dry Corridor.

Supported by World Vision's installed operational capacity in the Dry Corridor and its most vulnerable territories, the application of evidence-based methodologies and models, and collaboration and partnership with academia, the private sector, civil society, and local governments, we seek to resolve the challenges that limit the conditions for children in the Dry Corridor to fully develop their potential.

Our historical footprint in the Dry Corridor




51
Programs and projects.


83%
Of Central America's sponsored children live in the Dry Corridor.


69
Municipalities where World Vision has direct presence.

142,300
Sponsored children, adolescents, and youth live in the Dry Corridor.

Our Climate Action Portfolio in the Dry Corridor:

 Environmental Regeneration

 Food Security and Livelihoods

 Climate-Resilient Sanitation and Water, Hygiene (WASH)

 Risk Management and Humanitarian Response

The Dry Corridor – A Crisis for Children: Thousands face hunger, child labor, and school dropout due to the collapse of natural resources.



30 out of every 100 children eat less due to a lack of varied food.



36 out of every 100 children live in high-risk zones

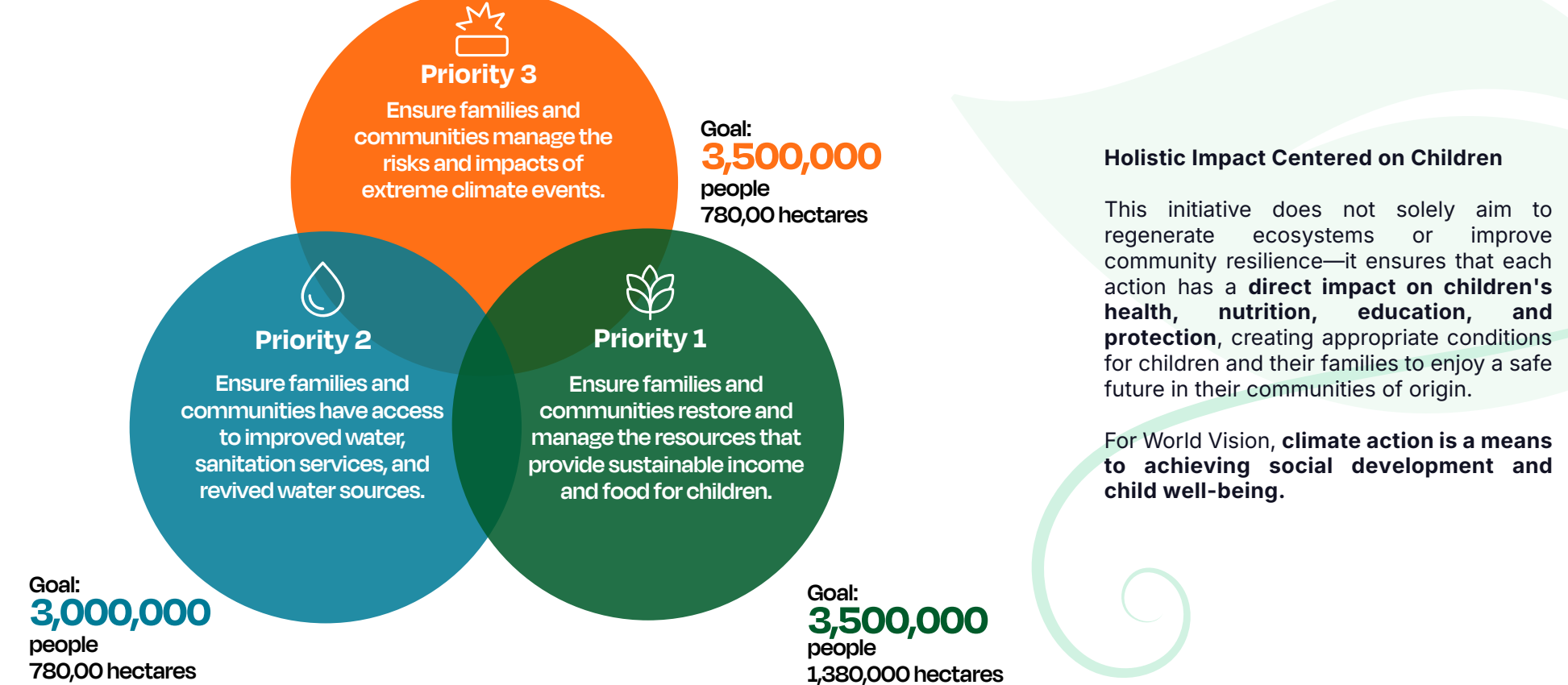


16 out of every 100 children lack access to safe water and spend up to an hour daily collecting it, reducing their study time.

Our Priorities and Areas of Focus

Recognizing the complex social, economic, and environmental needs of the region, Hope in the Dry Corridor is founded on evidence-based models across sectors such as child and youth participation, health, nutrition, water and sanitation, comprehensive risk management, and climate action, with three core priorities:

Resilience for Prosperity:



Our Interventions

- Natural Regeneration and Assisted Natural Regeneration:** Approaching ecosystem and landscape regeneration as an opportunity for economic development led by vulnerable communities, low-cost, high-impact practices such as the Farmer-Managed Natural Regeneration (FMNR) model are promoted, which have transformed the landscapes and livelihoods of entire communities around the world.
- Climate-Smart Agriculture (CSA):** Agricultural approach that increases productivity, enhances climate resilience, and reduces emissions.
- Climate-Resilient WASH:** Sustainable water and sanitation systems adapted to prolonged drought conditions.
- Healthy Homes and Improved Stoves:** Appropriate technologies that reduce deforestation, improve respiratory health, and strengthen the family environment.
- Economic Resilience for Communities:** Helps vulnerable families to increas their income and to provide well-being for their children through economic empowerment, financial capabilities, and access to sustainable markets.
- Community Risk Management:** Strengthens local capacity to anticipate, respond to, and recover from climate-related crises.
- Child Protection and Participation Models:** Ensure all interventions are safe, inclusive, and transformative for children.

This multi-layered approach generates sustainable, scalable solutions with high impact potential, aligned with global priorities for climate finance and human development.

Our Contribution to the SDGs



Scalability and Financing

With over **five decades of experience** and a portfolio exceeding 51 projects in the Dry Corridor, World Vision is positioned to scale impact by leveraging **multi-stakeholder partnerships with government institutions, bilateral donors, the private sector, results-based financing mechanisms, and philanthropic actors**. Through the co-design and implementation of community-led, evidence-based interventions, the organization seeks to strengthen the agency of children, families, and communities in addressing the interconnected social, environmental, and economic challenges of the Dry Corridor.

From 2023, World Vision has mobilized approximately **USD \$35 million** for this initiative and its strategic priorities. Toward 2030, we aim to mobilize **USD \$116 million** under a structure that guarantees **sustainability, co-responsibility, and visible outcomes** in climate resilience and child well-being.

Let's Unite to Bring Hope

01

Our **more than five decades of experience** in the region supporting the most vulnerable have led us to identify areas of greatest climate vulnerability as priority zones, where poverty, malnutrition, and lack of opportunities are most prevalent

02

Through our survey 'The Voice of Childhood', **children within the Central American Dry Corridor** shared their daily experiences and challenges related to water scarcity, food insecurity, access to education, and child labor.

03

Our field studies in the area reveal that **68% of children, adolescents, and youth** chose to migrate irregularly due to the lack of resources to meet their basic needs. The primary occupation of the migrant population is agriculture.

Be part of the transformation: invest in hope, resilience, and a better future for children.

Get in touch with us today to learn more: