



2024 PORTFOLIO HIGHLIGHTS

COVERAGE

Where did we work

PR: Malawi, Mozambique, Haiti, CAR, PNG, Sierra Leone, Somalia, Solomon Island, Thailand, Nicaragua,
SR: Angola, Burundi, Eswatini, India, Myanmar.

15

Countries



INVESTMENT

US\$ **140** million

BENEFICIARIES REACHED

24

million



PROGRAMS

Malaria
TB
HIV, TB/HIV
RSSH
C19 RM

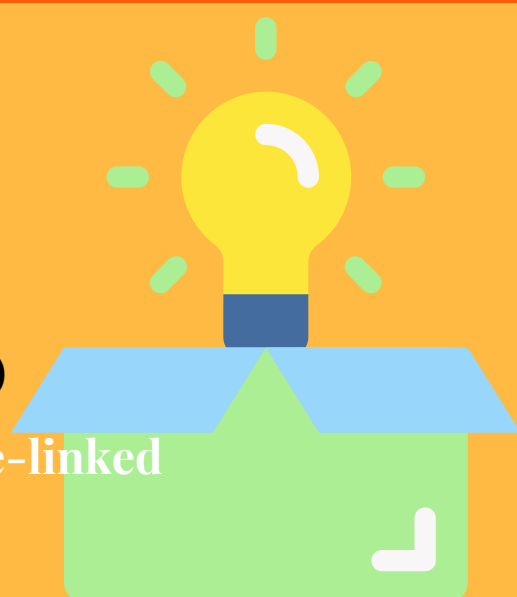
INNOVATION

Camping for Results (HIV)

AI Enabled X-Ray Diagnosis (TB)

Last Mile Mobile Solutions (RSSH)

Mobile payments and performance-linked CHW supervision



2024 MALARIA PROGRAM HIGHLIGHTS



COVERAGE

Where did we work

PR: CAR, Mozambique, Solomon Islands

SR: Angola, Burundi



INVESTMENT
US\$29 Million
(21% of portfolio)

BENEFICIARIES REACHED

~23 Million



PREVENTION

1,078,663

Nets Distributed

CASE MANAGEMENT

19 Million

Tests

10.4 Million

Treated



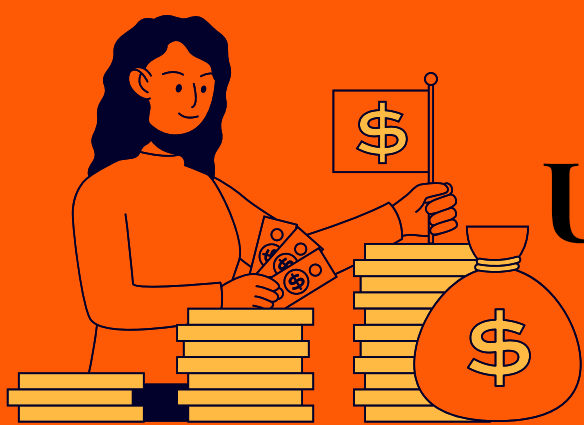
2024 TB PROGRAM HIGHLIGHTS



COVERAGE

Where did we work

PR: Malawi, CAR, Haiti, Sierra Leone, Somalia, Thailand, Solomon Islands, PNG, Nicaragua
SR: India, Myanmar



INVESTMENT

US\$23 million
(16% of portfolio)

BENEFICIARIES REACHED

>200,000



CASE DETECTION

77,737
Notified

1,335
DR TB cases Identified

TREATMENT

61,883
Initiated on Anti-TB Treatment

32,639
Initiated on Preventive Therapy (TPT)

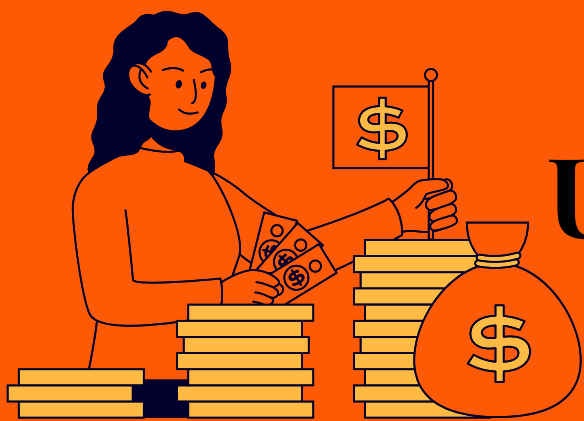


2024 HIV & TB/HIV PROGRAM HIGHLIGHTS

COVERAGE

Where did we work

PR: Malawi, Haiti, CAR, PNG, Sierra Leone, Somalia, Thailand, Nicaragua,
SR: Eswatini



INVESTMENT
US\$41 million
(29% of portfolio)

BENEFICIARIES REACHED

>700,000



HIV

275,000+
HIV Prevention Services

343,000+
PLHIV on ART

TB/HIV

15,463
PLHIV on TB Preventive Treatment

3,483
HIV-positive TB patients initiated on ART

