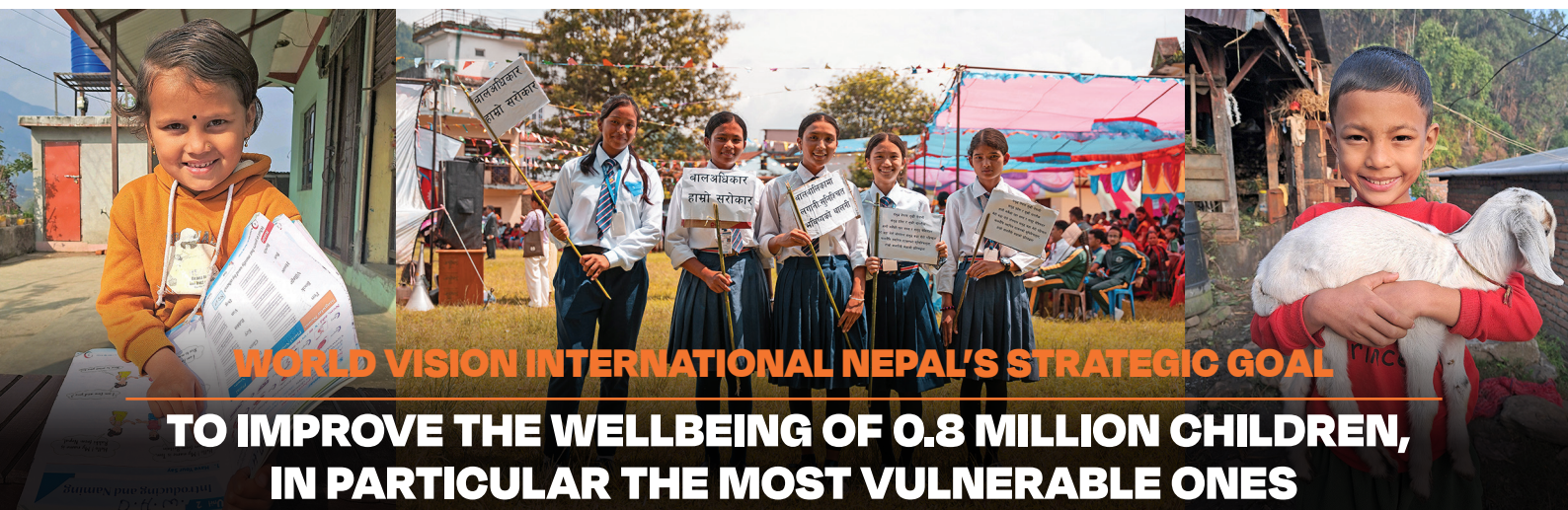


Lamjung Area Programme (AP)

Factsheet FY 21 to FY 25 Strategic Cycle



WORLD VISION INTERNATIONAL NEPAL'S STRATEGIC GOAL

TO IMPROVE THE WELLBEING OF 0.8 MILLION CHILDREN, IN PARTICULAR THE MOST VULNERABLE ONES

LAMJUNG AP GOAL

To improve the wellbeing of the most vulnerable children by addressing vulnerabilities of extreme deprivation and discrimination and promote positive relationships within families and communities.

Sponsorship Funding Projects and Budgets

Protection, Community Engagement and Sponsorship plan (PCESP) Technical Project

Nutrition and Resilient Livelihoods (NRL) Technical Project

Total Budget in **USD 2,500,000** including **USD 7,040** for People/Children with Disabilities

Yearwise Budget in USD

FY2021	FY2022	FY2023	FY2024	FY2025
500,000	500,000	500,000	500,000	500,000

Programme Impact in number (Sponsorship projects)

18,046
Total people reached

3,701 (32%) Most Vulnerable Children reached	6,479 Adult reached	1,492 Men reached	4,987 Women reached
40 Children/People with disability reached	11,567 Children reached	6,126 Boys reached	5,441 Girls reached



Name of Municipality and Rural municipality	Working wards
Beshishahar municipality	Ward # 1, 2, 3, 7, 8, 9, 10 and 11
Sundarbazar municipality	Ward # 2, 6, 7, 8 and 9
Dordi Rural municipality	Ward # 8 and 9

COVID-19 Emergency and Response (FY20 to FY 22)

12,567
Total people reached

3,379 (73%) Most Vulnerable Children reached	7,939 Adult reached	3,814 Men reached	4,125 Women reached
36 People/children with disability	4,628 Children reached	2,268 Boys reached	2,360 Girls reached



486
Households supported with food items



1,200
Self-learning and stationery materials distributed to children



100
Hygiene kits



35
Oxygen cylinder

35
PPE sets

35
Pulse oximeter

35
Thermal gun

Major achievements of Sponsorship Projects

Nutrition and Resilient Livelihoods

2,101 farmers/people from **112** producers and saving groups formed to strengthen knowledge and skills in local value chain development and financial accessibility.

904 farmers of producer groups capacitated to improve production and increase income.

1,444 farmers capacitated with knowledge and skills of climate resilient agriculture techniques.

397 most vulnerable families affected by disasters supported with skills-based training and business startup items.

121 members from **13** Citizen Voice and Action (CVA) groups formed and trained to improve the services of local health institutions/health posts.

106 individuals capacitated with knowledge and skills of income generation.

90 individuals supported improving the business startup for alternative livelihood opportunities.

18 Disaster Risk Management (DRM) Committees formed at community level, ward level and local level and trained to prepare for disasters and early warning systems.

Our progress in this strategic cycle

Proportion of households with sufficient diet diversity, increased by **21.07%**. (Baseline value 53.53, Endline value 74.60)

Number and percentage of households with the means to save money using a bank or credit union, increased by **22.26%** (Baseline value 61.04%, Endline value 83.30)

Proportion of households who faced a disaster but were able to recover and now live at the level they did before, increased by **42.40%** (Baseline value 40.50, Endline value 82.90)

Proportion of health center users who report increased responsiveness of health service providers to communities, improved by **0.44%**. (Baseline value 60.96, Endline value 61.40)

88.1% of boys and girls reported having positive and peaceful relations with their Parent(s)/Caregiver(s) in Lamjung AP, whereas overall, **85.8%** of them reported from WVI Nepal's working areas.

83.1% of boys and girls reported having positive and peaceful relations with peers in Lamjung AP, whereas overall **77.8%** of them reported from WVI Nepal's working areas.

Protection, Community Engagement and Sponsorship Plan

2,200 Registered Children (RC) sponsored in child sponsorship programme

612 RC received gift notifications of **\$69,726** from sponsors

7 Micro projects of USD **\$15,504** implemented for meaningful participation of RC

682 adolescents from **24** Rupantaran groups trained on life and protective skills and engaged in the communities

603 parents oriented on positive parenting, fostering safer family environment for children.

600 children and families received with psycho-social support.

65 most vulnerable children benefited with food and medical support.

23 cases (**16** child marriage, **2** child labor, **2** child sexual abuse and other) handled proactively with confidentiality through case management system.

3 Local Child Right Committees (LCRC) and **15** Ward Child Rights Committees (WCRCs) are actively functioning and managing cases and referral system effectively.

8 policies, guidelines and plans developed and implemented at local level, which were supported by WVI Nepal.

6 Child Friendly Local Governance (CFLG) wards declared in Besishahar ward # 1, 2, 4, 6, 10 and 11.

2 Nutrition and Child Friendly Local Governance (N/CFLG) wards declared in Sundarbazar municipality ward # 2 and 8.

4.1% of Lamjung adolescents reported experiencing physical attacks in the past 12 months, whereas overall, **7.1 %** of them reported from WVI Nepal's working areas.

1.7% of Lamjung adolescents reported experiencing sexual violence in the past 12 months by any perpetrator, whereas overall, **2.8** of them reported from WVI Nepal's working areas.

(Source: Baseline evaluation 2021, Endline evaluation 2025)

Support office:
World Vision Switzerland

Partner NGO:
Rural Community Development
Center (RCDC)

Urban Programme Office
KC Tower, Kusunti
Lalitpur-13, Nepal
Phone: +977-1-5970877

For feedback
Toll free # 16600100014
NCELL # 9856046179
Email: npl_feedback@wvi.org