

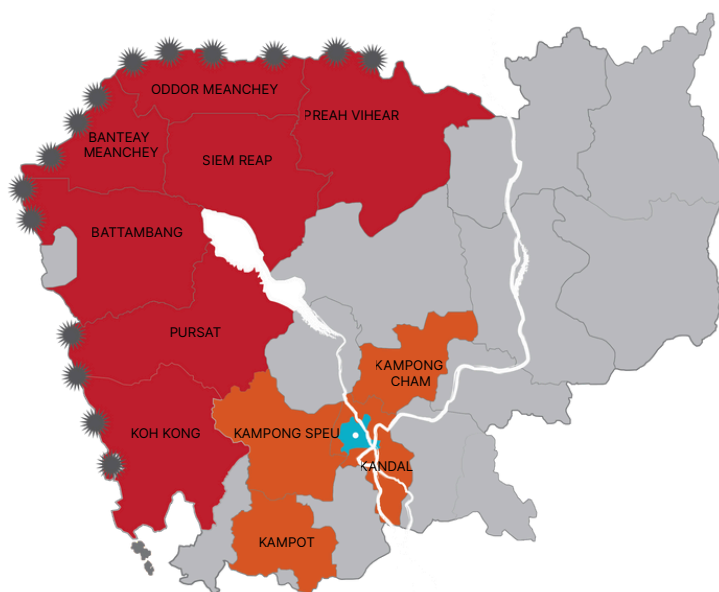
SITUATION REPORT #18

Displacement Crisis as a Result of the Cambodia –Thailand Border Conflict

SITUATION OVERVIEW

On 7 December 2025, tensions re-escalated in several areas of Preah Vihear and Oddar Meanchey provinces. By the early morning of 8 December, reports indicated the use of heavy weapons and airstrikes, extending into parts of Banteay Meanchey Province. Between 9 and 18 December, the conflict intensified, with military operations spreading into Pursat, Battambang, Siem Reap, and eventually reaching Koh Kong Province.

According to the National Committee for Disaster Management (NCDM), as of 18 December 2025, the violence resulted in 18 civilian deaths, including an infant and an elderly person, and 78 injuries. Approximately 151,603 families (498,242 people), including 260,708 women and 158,323 children, have been evacuated to safer areas. Of those displaced, 96,816 families (322,545 people) have moved into 196 displacement sites established by the Government, while the remaining have sought shelter with relatives.



■ Provinces affected by the crisis where official displacement sites (safety centers) have been set up.

■ Provinces receiving displaced people who have moved to stay with relatives or host families.

Provinces

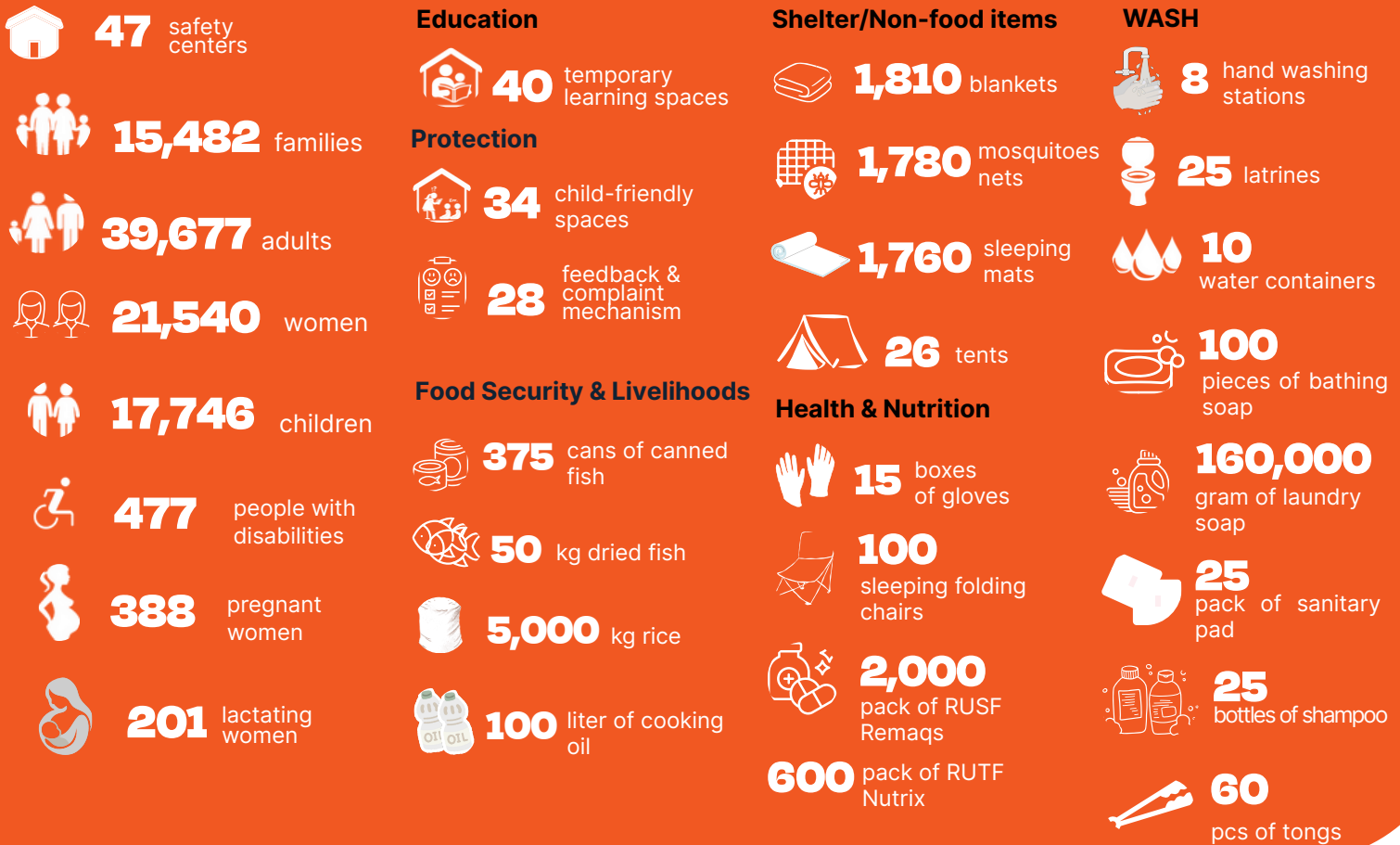
- **Oddar Meanchey:** 11,369 families | 38,288 people
- **Preah Vihear:** 10,896 families | 34,731 people
- **Banteay Meanchey:** 33,953 families | 115,403 people
- **Siem Reap:** 25,650 families | 80,993 people
- **Battambang:** 11,780 families | 42,249 people
- **Pursat:** 762 families | 2,193 people
- **Koh Kong:** 2,406 families | 8,688 people



EMERGENCY RESPONSE PROGRESS

World Vision International in Cambodia (WVI-C) is responding to humanitarian needs resulting from the Cambodia–Thailand border conflict. The intervention reached **57,423 displaced people**, focusing on **Education, Food Security and Livelihoods, Health and Nutrition, Child Protection, Shelter/ Non-food items, and WASH** in **Banteay Meanchey, Preah Vihear, Siem Reap, Battambang, and Oddar Meanchey**, with potential expansion to other provinces.

From 11 to 18 December 2025, WVI-C has reached:





COORDINATION AND PARTNERSHIP

World Vision continues to work closely with local authorities, NGO partners (such as Transcultural Psychosocial organization to deliver psychosocial support to affected communities), and the private sector to coordinate emergency support for displaced populations.

World Vision actively engages with the Humanitarian Response Forum (HRF) technical working groups, Co-Chairs the Cash Working Group and the WASH Working Group with UNICEF, and regularly inputs into the 5Ws HRF reporting system, which informs the HRF Situation Reports and strengthens response coordination. Additionally, World Vision continues to meet with local/international partners and embassies to provide briefings on the evolving humanitarian situation.



RESOURCE MOBILIZATION

World Vision has been actively mobilizing resources from its support offices/funding offices, local/international partners and embassies to sustain the emergency response, with efforts continuing as the crisis evolves. We extend our deepest thanks and appreciation to the **Cambodian public, the Swiss Agency for Development and Cooperation (SDC), Grab, Smart Axiata, Coca-Cola Cambodia Beverage Company, HGB Group, De Heus TMH Cambodia, Courtyard by Marriott Phnom Penh, iCare, Chea Ry Co. Ltd., and all our valued partners** for their active support and solidarity. Your contributions are bringing comfort and essential assistance to displaced children and families during this critical time. Resources mobilized for early recovery reports have been shifted to emergency response.



SOCIAL MEDIA AND MEDIA ENGAGEMENT

As of **18 December 2025**, a total of **26 media features**—including coverage from **eight international outlets**—have highlighted World Vision's ongoing efforts in child protection, education, fundraising campaigns, and humanitarian response. This coverage has helped amplify the needs and voices of internally displaced populations, particularly children, reaching an **estimated 2–3 million people** and contributing to increased public awareness and engagement. In addition, social media platforms continue to showcase on-the-ground activities at safety camps, demonstrating ongoing efforts to support displaced families.



CALL FOR ACTION

World Vision has declared a Category II emergency in response to the rapidly increasing number of internally displaced persons. We are urgently appealing for **USD 1.5 million** to implement our updated response plan, which focuses on delivering life-saving assistance to the most vulnerable.

This funding will enable us to continue providing critical support across **child protection, WASH, education, health, and livelihoods**, while working closely with government ministries and partners to ensure a coordinated and comprehensive response. Immediate support is essential to prevent service disruptions and safeguard children and families during this uncertain period.



CONTACT

Janes I. Ginting

National Director

Tel: (855)86 644 494

Email: janes_ginting@wvi.org

Vannak Srey

Disaster Management Manager

Tel: (855)98 636 384

Email: vannak_srey@wvi.org

Phal Malileak

Response Manager

Tel: (855)12 474947

Email: malileak_phal@wvi.org