

**WORLD VISION
RWANDA**

COUNTRY PROFILE

Our Vision

Our vision for every child, life in all its fullness.
Our prayer for every heart, the will to make it so.

Our Mission

Our mission is to follow our Lord and Savior Jesus Christ in working with the poor and oppressed to promote human transformation, seek justice, and bear witness to the good news of the Kingdom of God.

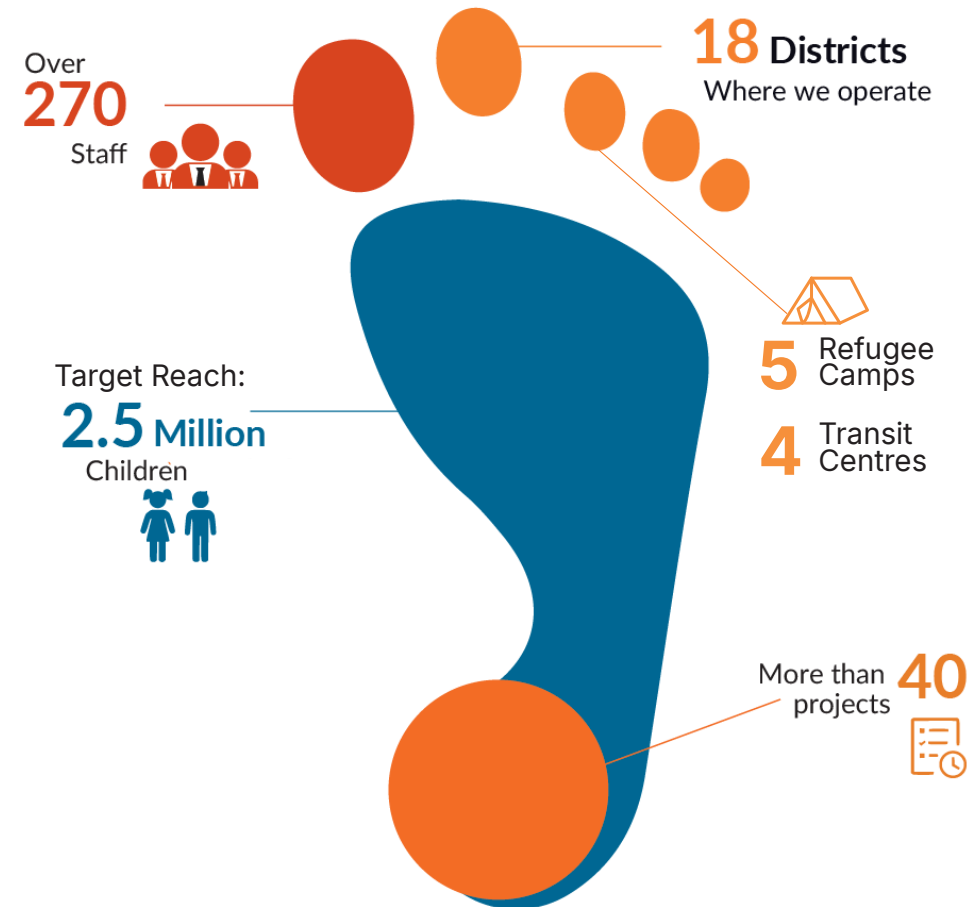
Who We Are

World Vision is a Christian relief, development, and advocacy organization dedicated to working with children, families, and their communities to reach their full potential by tackling the root causes of poverty and injustice. World Vision serves all people, regardless of religion, race, ethnicity, or gender.

World Vision began operating in Rwanda in 1994, providing relief and rehabilitation for the close to three million people who were displaced because of the 1994 Genocide against the Tutsi. In the year 2000, we began long-term, child-focused Area Development Programmes in different parts of the country, targeting vulnerable children and their families with interventions in the areas of education and child sponsorship; health and nutrition; water, sanitation, and hygiene; and economic empowerment of households.

With more than 270 staff in Rwanda currently, our work spans 18 districts, supporting more than two million of the most vulnerable children.

Our Footprint



World Vision Rwanda's Operational Framework

World Vision Rwanda operates through a robust and sustainable operational framework that combines long-term community sponsorship, competitive grant acquisition, and strong global and regional support structures. Our sponsorship model provides a stable foundation for long-term programming by enabling sustained investment in child well-being, community systems strengthening, and multi-year development outcomes. This predictable funding base allows us to plan strategically, build deep community relationships, and deliver transformational change across our programme areas.

Complementing sponsorship, World Vision Rwanda actively mobilizes external resources through bilateral, multilateral, private-sector, and foundation grants. Our approach to grant acquisition is grounded in evidence-driven design, strong partnerships, and alignment with national priorities. This blended model ensures both financial sustainability and the ability to scale high-impact interventions across sectors such as education, health, nutrition, livelihoods, and child protection.

Our work is further strengthened by an integrated support ecosystem that spans the World Vision Partnership. The Regional Office provides technical leadership, capacity strengthening, and quality assurance across programming, while Support Offices offer strategic fundraising collaboration, donor engagement, and technical expertise to enhance programme design and delivery. The Global Centre sets standards, policies, systems, and accountability mechanisms that ensure operational excellence, stewardship, and alignment with global priorities.

Together, these interconnected elements; sponsorship, grants, and partnership-wide support; position World Vision Rwanda as a stable, resilient, and forward-looking organization capable of delivering sustained impact for the most vulnerable children and communities.





Our Integrated Programming Approach

World Vision Rwanda applies a holistic and integrated programming approach that recognizes the interconnected nature of children's well being. Our interventions bring together child protection, education, health, nutrition, WASH, livelihoods, and climate resilience in a coordinated manner to address the root causes of vulnerability.

By working across sectors and partnering closely with communities, government, and local structures, we ensure that children and families receive comprehensive support that strengthens their resilience and expands opportunities for long term transformation. This integrated approach enables us to deliver sustainable impact, enhance equity, and ensure that every child, especially the most vulnerable, can thrive in a safe, healthy, and empowering environment.



Our strategic priorities

1

Protecting Children from Violence, Exploitation, and Barriers to Education

World Vision Rwanda is committed to ensuring that all children grow up in safe, nurturing, and supportive environments.

Over the next five years, we will strengthen national and community systems that prevent and respond to violence, exploitation, and harmful practices, including child labour and sexual abuse.

Our work will also address barriers to learning by advancing efforts that promote safe schools, reduce factors that drive dropout, and support continuous learning for vulnerable girls and boys. Through this strategic focus, children will be better protected, empowered, and positioned to thrive in their education and broader development.

2

Improving Child Nutrition and Reducing Stunting through Integrated Health and WASH Approaches

World Vision Rwanda will pursue an integrated model that strengthens the foundations of child well being through nutrition, health, and WASH.

Our strategy prioritizes improved access to maternal and child health services, adoption of essential hygiene and sanitation practices, and increased availability of diverse, nutritious foods at household level, supported by climate smart production systems.

This comprehensive approach aims to drive sustained reductions in stunting and ensure that children under five are healthy, well nourished, and able to reach their full developmental potential.

3

Strengthening Household Livelihoods, Climate Resilience, and Access to Productive Assets

To build resilient, food secure, and economically empowered households, World Vision Rwanda will advance a long term livelihoods and resilience agenda.

This includes expanding financial inclusion, promoting climate resilient and market driven agricultural transformation, and enabling families, especially producers and youth, to access productive assets and relevant skills.

By strengthening adaptive capacity, improving productivity, and connecting households to opportunities within evolving value chains, we seek to enhance children's development outcomes and contribute to sustainable well being for families and communities.

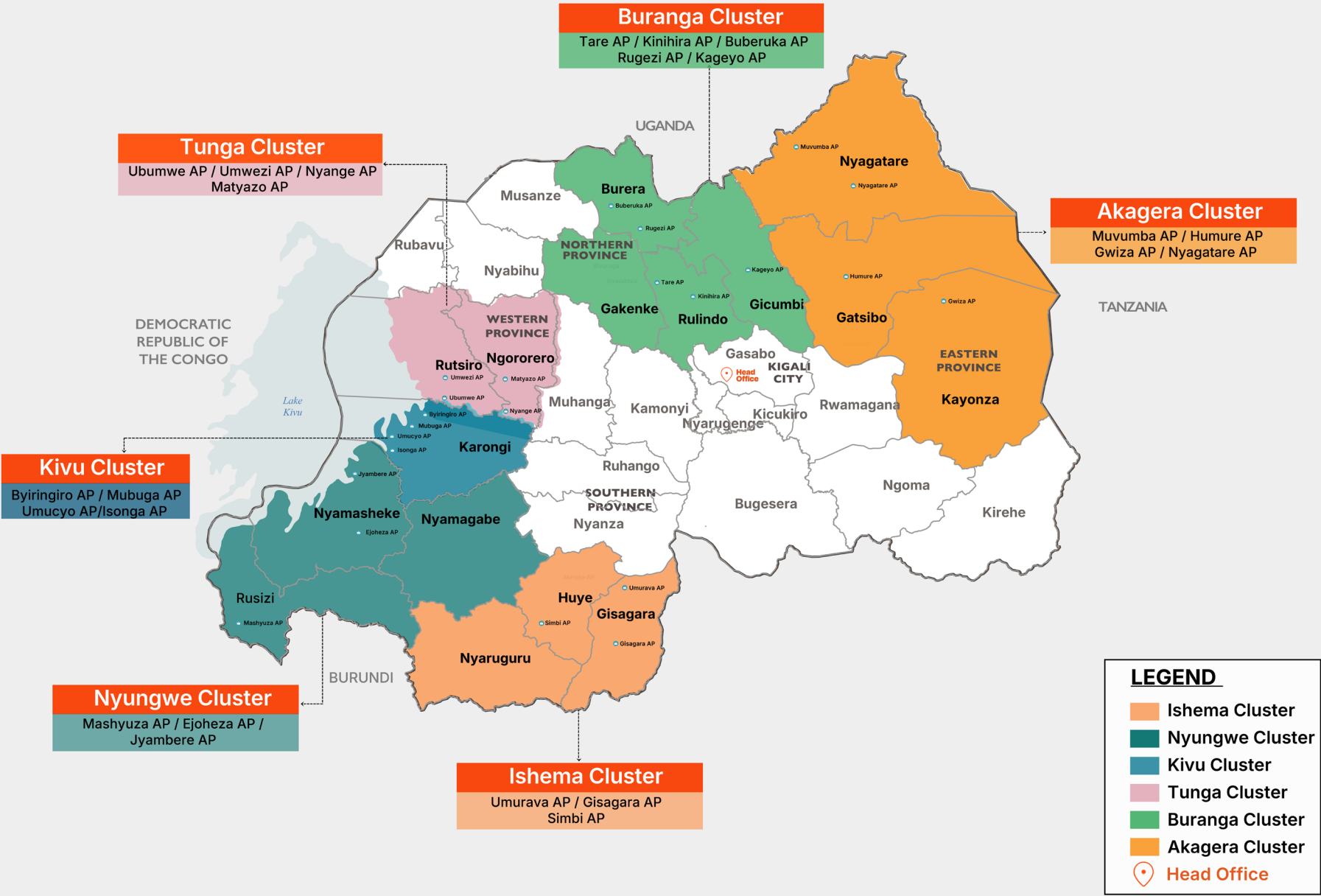
Cross Cutting Themes:

Across all programmes and partnerships, World Vision Rwanda integrates key cross-cutting themes to ensure inclusive, sustainable, and transformative impact. These include Advocacy, Gender Equality, Disability and Social Inclusion (GEDSI), Youth Development, Peacebuilding, Disaster Risk Reduction, and Environmental Sustainability and Climate Action (ESCA).

By embedding these priorities into programme design and implementation, World Vision Rwanda strengthens community resilience, promotes equity and meaningful participation, empowers young people as agents of change, and advances environmentally responsible approaches that safeguard long-term development gains.



World Vision Rwanda Operation Areas





Head Office

Address: World Vision Rwanda
KG 9 Avenue, Nyarutarama
P.O. Box 1419 Kigali
Telephone: (+250) 788 308 925/6/7/8

 @World Vision Rwanda |  @WVRwanda |  @World Vision Rwanda

 **Youtube:** @World Vision Rwanda |  @World Vision Rwanda

 <https://www.wvi.org/rwanda>