

March 2026

World Vision 

ANNUAL REPORT 2025

Bangladesh

Our Vision for every child,
life in all its fullness.
Our prayer for every heart,
the will to make it so.



WORLD VISION BANGLADESH'S CONTRIBUTION TO THE SDGs



Every hour, **08** individuals received livelihood support to end poverty for their families.



Every hour, **37** individuals received food assistance to end the hunger of their family members.



Every hour, **30** children (under 5 years) were supported to prevent malnutrition.



Every hour, **25** children receive education.



Every hour, **07** people receive access to clean water and **26** people have access to safe sanitation facilities.



Every hour, **18** individuals received livelihood inputs to ensure decent work & income.



Every hour **20** people were better equipped to deal with disaster risk and climate change.



Every hour, **11** children took part in ending violence against children.

MESSAGE FROM THE NATIONAL DIRECTOR

Dear Friends and Partners,

As I reflect on the past year, I am encouraged by the courage, resilience, and promise of the children of Bangladesh. In every village, ward, and community we serve, children remind us why our mission matters: **every child deserves a life of dignity, safety, opportunity, and hope**. World Vision Bangladesh reached **more than 6.5 million people**, with children & youth firmly at the heart of our work. Behind these numbers are families strengthened, communities made safer, and systems beginning to work more fairly for those who are most vulnerable.

Together with communities, local governments, faith leaders, and partners, we marked powerful milestones in child protection. **2,333 villages and wards were declared child marriage-free**, and **869 villages and wards were declared child labour-free**—each declaration reflecting changed norms, collective action, and a shared commitment to protect childhood. These unprecedented achievements signal what is possible when communities lead change.

Through the **ENOUGH Campaign**, over **722,000 people** came together to confront child hunger and malnutrition. Alongside this movement, our integrated health, nutrition, WASH, education and livelihoods initiatives delivered measurable improvements in child growth, maternal health, food security, and household resilience.

This was also a year of investing in the future. **We planted 1.45 million trees**, expanded eco-villages and green schools, strengthened disaster preparedness and humanitarian response—supporting communities to respond with dignity in times of crisis while building resilience to climate shocks.

It is clear that **sustainable change takes place when children, families, communities are fully empowered** and work together with local

government and all relevant stakeholders. From MenCare programmes reshaping family relationships to youth-led advocacy mobilising **USD 311,355** in local government resources for child wellbeing, children's voices are increasingly shaping decisions that affect their lives.

This year also marked an important step toward localisation with the establishment of **World Vision Foundation** as a local entity—reinforcing our commitment to nationally led, sustainable impact.

I extend my sincere thanks to our staff, communities, partners, government counterparts, and donors. As we step into the next strategy cycle, our commitment remains unwavering: **to help every child in Bangladesh experience life in all its fullness.**

With hope and gratitude,

Suresh Bartlett

National Director

World Vision Bangladesh



OUR ACHIEVEMENTS

5 YEAR* STRATEGIC IMPACT

Education Service Satisfaction



95.1% ↑

Stunting Children Under Five



29.6% ↓

Exclusive Breastfeeding



64.2% ↑

Skilled Birth Attendance



95.6% ↑

Households Using Clean Drinking Water



99.2% ↑

Appropriate Handwashing Behaviour



78.7% ↑

Households with Diversified-Income



43.5% ↑

Parents' Perception of Child Safety



69.6% ↑

REACH

Total



6,531,512

Male



548,093

Female



1,487,011

Total Children



4,446,408

Boys



2,111,490

Girls



2,384,918

Children with Disabilities



9,948

*FY 2021-2025

OUR STRATEGIC STORY

BRIDGES TO IMPACT



Over the last five years, World Vision Bangladesh intentionally moved beyond isolated projects toward **integrated, system-strengthening programming.**

OUR APPROACH RESTED ON ONE BELIEF

Sustainable change for children happens when communities, systems, and institutions move together.

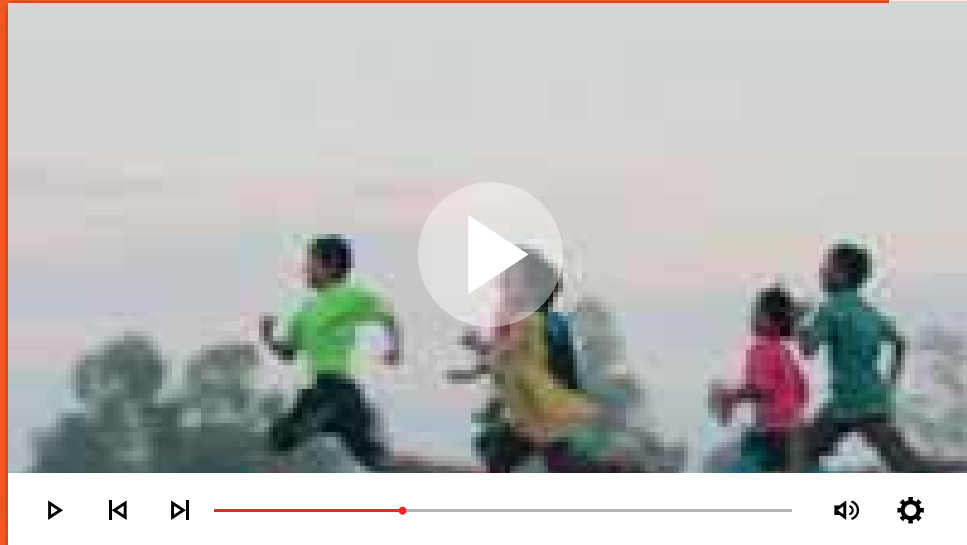
THE “BRIDGES TO IMPACT” FRAMEWORK CAPTURES THIS SHIFT—CONNECTING:

- **Flourishing Children**
- **Children Equipped to Learn**
- **Sustainable Well-being**
- **Overcoming Poverty & Injustice**
- **Unity & Resilience**

FY25 stands as the evidence year—where outcomes, behaviours, and systems-level indicators show what sustained investment makes possible.

Over five years, World Vision Bangladesh moved beyond projects to strengthen the systems that shape children's lives.

Guided by one belief—that lasting change happens when communities, systems, and institutions move together. Bridges to Impact tells this story, with FY25 as the evidence of what sustained investment makes possible for every child.



HEALTH, NUTRITION & WASH

SUSTAINABLE WELL-BEING



WHY THIS MATTERS

A child cannot **learn, thrive, or grow in dignity** without **health, nutrition, and clean water**.

IMPACT

Stunting
Children Under Five



29.6% ↓

Households Using Clean
Drinking Water



99.2% ↑

Skilled Birth
Attendance



95.6% ↑

Exclusive
Breastfeeding



64.2% ↑

Appropriate Handwashing
Behaviour



78.7% ↑

Households Using
Sanitation Facility



92.6% ↑

OUTPUTS

- Community Health Workers active: **2,095**
- Mothers reached with MNCH services: **12,359**
- Pregnant and lactating mother reached with awareness: **56,359**
- People received Water and Sanitation services: **376,146**
- Sanitation facilities supported: **4,646**

Healthy children build stronger communities.

Through integrated health, nutrition, and WASH programmes, World Vision Bangladesh is helping families prevent illness and support children to grow and thrive. Together with communities and partners, we are strengthening the foundations of lifelong wellbeing.



LIVELIHOODS

OVERCOMING POVERTY & INJUSTICE

WHY THIS MATTERS

Poverty is not only about income—it is about **dignity, resilience, and choice.**

IMPACT

Households Meeting
Basic Needs



73.2% ↑

Housholds with
Diet Diversity



92.5% ↑

Housholds with
Diversified-Income



43.5% ↑

Women in Household
Decision-Making



92.6% ↑

OUTPUTS

- **41,564** households supported with agricultural and non-farm inputs
- Producer groups supported: **1,702**
- Women-led enterprises supported: **18,648**



Stronger livelihoods are transforming vulnerable households across Bangladesh.

Through skills, enterprise support, and access to resources, families are building stable incomes and new opportunities. When livelihoods grow stronger, children gain the chance to learn, thrive, and dream bigger.





EDUCATION

CHILDREN EQUIPPED TO LEARN

WHY THIS MATTERS

Learning is foundational to every other outcome in a child's life. Without **literacy**, children remain locked out of **opportunity, participation, and protection**.

IMPACT

Children Achieving Minimum Reading Proficiency



73.0% ↑

Household Satisfaction with Public Education



95.1% ↑

*Sustained Delivery of Learning Roots, Unlock Literacy, LSBE, and IMPACT+

OUTPUTS

Children Supported through Learning Roots



12,578

Children Supported through Unlock Literacy



10,658

Teachers Trained



619

Community Reading Spaces Supported



863

*LSBE: Life Skills Based Education

Education opens the door to opportunity.

Through early-grade literacy, teacher support, and community learning spaces, World Vision Bangladesh is helping children build the confidence to read, learn, and succeed. When children learn early, they gain the foundation to shape a brighter future.



CHILD PROTECTION & PARTICIPATION

SAFE SOCIAL ENVIRONMENTS

WHY THIS MATTERS

Children cannot flourish in fear. **Safety, dignity, and voice** are non-negotiable.

IMPACT

Positive Parent-Child Relationships



57.7% ↑

Physical/Psychological Punishment



32.1% ↓

Families Satisfied with Protection Services



86.5% ↑

Parents' Perception of Child Safety



69.6% ↑

OUTPUTS

- Parents trained in positive parenting: **35,835** couples
- Adolescents engaged in participation platforms: **94,589**



Every child deserves to grow up safe, heard, and protected.

World Vision Bangladesh works with families, communities, and local systems to prevent violence and strengthen safe environments for children. When children feel safe and valued, they gain the confidence to participate, learn, and thrive.



A photograph of children playing soccer on a sandy field. In the foreground, a child in an orange shirt is kicking a soccer ball. Other children in orange shirts are visible in the background. The text is overlaid on the image.

ADVOCACY & JUSTICE FOR CHILDREN

**SHIFTING SYSTEMS.
AMPLIFYING VOICES.
PROTECTING CHILDHOOD.**

WHY THIS MATTERS

Children's wellbeing is shaped not only by services, but by laws, policies, norms, and power structures. Without accountability, participation, and justice, children remain vulnerable to harmful practices, exploitation, and exclusion. World Vision Bangladesh works at the intersection of grassroots mobilisation and national policy reform — ensuring that **children are not only protected, but heard.**

Between FY21 and FY25, our advocacy journey moved from community declarations to institutional reform — linking citizen voice with government accountability to build lasting system change.

FIVE ZERO PLUS: A NATIONAL COMMITMENT FOR EVERY CHILD

Five Zero Plus (+) is World Vision Bangladesh's strategic framework to ensure every child survives, learns, and thrives. It commits to five critical goals: Zero Child Hunger, Zero Child Malnutrition, Zero Child Labour, Zero Child Out-of-School, and Zero Child Marriage—addressing the interconnected barriers that limit children's wellbeing.

The "Plus (+)" extends this commitment to environmental stewardship, promoting a clean and green future through reduced single-use plastics and climate-conscious practices. By mobilising communities, local government, and national stakeholders, Five Zero Plus advances systems change—strengthening accountability and protecting children's rights nationwide.

IMPACT

Citizen Voice and Action (CVA) strengthened accountability systems:

Community Clinics
Improved



214

Primary Schools
Strengthened



60

Union Parishads Engaged
in Service Improvement



88

Police Child Affairs
Desks Supported



28

Child Marriage Prevention:

Wards Declared
Child Marriage-Free



46

Villages Declared
Child Marriage-Free



2,287

Unions Declared
Child Marriage-Free



133

Municipalities Declared
Child Marriage-Free



05

Upazilas Declared
Child Marriage-Free



03

Decline in Prevalence of
National Child Marriage



47.2% ↓ (2025)

Child Labour Elimination:

Wards Declared
Child Labour-Free



50

Villages Declared
Child Labour-Free



819

Unions Declared
Child Labour-Free



52

Municipalities Declared
Child Labour-Free



01

Upazilas Declared
Child Labour-Free



02

Children Integrated
Back to School



64

Children Integrated
Back to Vocational Training



30

Child Protection Systems Strengthened:

- **1,978** Community-Based Child Protection Committees (CBCPCs) active
- Integration of vulnerable children into government social safety nets

OUTPUT

- **94,589** children and youth meaningfully participated in actions supporting the prevention of violence against children.



YOUTH DEVELOPMENT


THE POWER OF BECOMING

WHY THIS MATTERS

Bangladesh is one of the youngest countries in South Asia. Every year, millions of young people step into adulthood carrying both immense potential and significant risk—unemployment, exclusion, climate stress, and civic disengagement. Whether Bangladesh's demographic reality becomes a dividend or a crisis depends on how young people are equipped, trusted, and included today.

In our **communities**, the **youth** we partner with are solving today's climate and nutrition crises while building the systems they will inherit. When equipped with the right skills, tools, and platforms, they are not just "waiting" for the future—they are leading it, **capable of shaping communities, influencing systems, and driving resilience today.**

WHAT WE FOCUSED ON

- Youth leadership and civic engagement
 - Life skills and pathways to employability
 - Youth-led climate and social action
 - Participation in local decision-making and community systems
- 

OUTPUTS

- Youth trained through life skills, leadership, or employability pathways: **82,155**
- Youth groups or platforms supported (IMPACT+, clubs, forums): **2,041**
- Youth-led initiatives implemented in communities: **07**

Empowered youth are shaping the future of their communities.

Through leadership training, skills development, and civic engagement, young people are becoming catalysts for resilience and positive change. At World Vision Bangladesh, investing in youth today means building stronger communities for tomorrow.





GENDER EQUALITY, DISABILITY & SOCIAL INCLUSION (GEDSI)

ADVANCING DIGNITY, VOICE, AND EQUAL OPPORTUNITY FOR EVERY CHILD AND FAMILY

WHY THIS MATTERS

Gender inequality, exclusion, and discrimination—especially against women, girls, people with disabilities, and other marginalised groups—continue to limit children’s safety, wellbeing, and opportunities in life. Lasting change for children requires more than access to services; it demands **shifts in power, decision-making, attitudes, and social norms** within households, communities, and institutions.

Gender Equality, Disability & Social Inclusion (GEDSI) was strengthened by empowering **over one million people** through gender-transformative and inclusion-focused programming. This marked a deliberate shift from awareness-raising to **sustained behaviour change, community empowerment, and**

systems strengthening. By engaging families, community structures, and faith leaders as change agents, GEDSI efforts reshaped everyday decision-making—reflected in **92.6% of households** reporting women's active participation in decisions, and growing support for gender-equitable attitudes among **62% of adolescents** and **56% of adults**. Together, these system-level shifts are building more inclusive, just, and resilient communities where children are protected, valued, and able to thrive.

WHAT WE FOCUSED ON

- Gender-transformative programming
- Disability and social inclusion
- Gender equality and women's empowerment
- MenCare and shared caregiving models

OUTPUT

People Increased Awareness of Gender Equality and Social Inclusion



108,286

Couples Graduated from the MenCare Programme, Promoting Shared Caregiving and Equitable Household Roles



15,156

Children, Adolescents, and Youth Mobilised to Promote Health, Nutrition, and WASH Practices



15,156

People Actively Engaged in Preventing Gender-Based Violence and Child Labour



26,710

Inclusive communities are stronger communities.

World Vision Bangladesh works to ensure women, girls, and people with disabilities have equal opportunities to participate, lead, and thrive. By advancing gender equality and social inclusion, we are helping build a more just and resilient Bangladesh.






URBAN PROGRAMMING

CITIES WHERE EVERY CHILD BELONGS

WHY THIS MATTERS

Bangladesh is **urbanising faster than its systems** can adapt. Informal settlements are expanding, services are overstretched, and children in cities face compounded risks—unsafe spaces, poor WASH, digital violence, and limited opportunities for participation.

WHAT WE FOCUSED ON

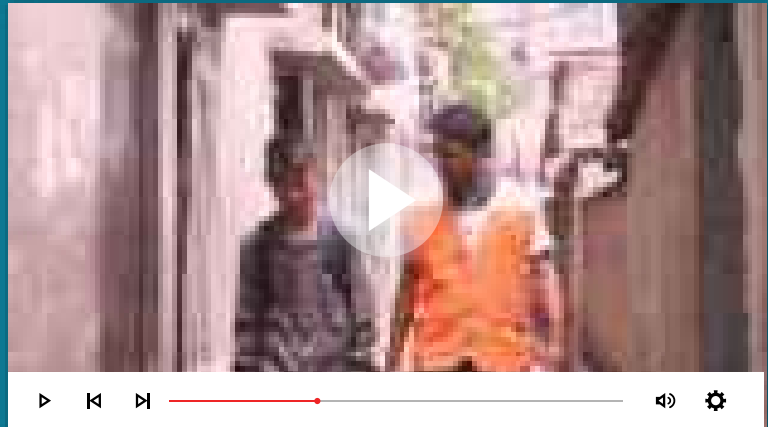
- Urban system strengthening and service mapping
 - Child- and youth-friendly urban spaces
 - Urban WASH, safety, and protection
 - Data-driven planning and accountability
- 

OUTPUTS

- Urban informal settlements engaged/supported: **611**
- **1,397** children withdrawn from child labour in Dhaka
- Coordinated action in Dhaka contributed to **four wards being officially declared child labour-free**, demonstrating how data, partnership, and local government engagement can drive urban-level system change.

Urban poverty demands innovative, community-led solutions.

Across Dhaka's informal settlements, World Vision Bangladesh is strengthening water, sanitation, and resilient community systems. Together, we are creating healthier, safer urban environments where children and families can thrive.





CLIMATE, DRR & HUMANITARIAN RESPONSE UNITY & RESILIENCE

WHY THIS MATTERS

Bangladesh is one of the **most climate-vulnerable countries in the world**, where floods, cyclones, and displacement increasingly threaten children's lives and futures. World Vision Bangladesh focuses on **building resilience before crises strike and strengthening local systems for recovery**, ensuring communities can anticipate, adapt, and respond to climate shocks. Between FY21 and FY25, these efforts **reached over 2 million people**, helping communities move from crisis to **locally led preparedness and climate-smart resilience**.

WHAT WE FOCUSED ON

- Disaster risk reduction and community preparedness
- Anticipatory action and early warning systems
- Climate adaptation and nature-based solutions
- Rapid humanitarian response linked to recovery and resilience

OUTPUTS

Humanitarian Response & Disaster Risk Reduction

People Reached Through Integrated Humanitarian Response, DRR and Climate Adaptation



329,704

People Supported Through Life-Saving Humanitarian Response and Early Recovery



142,898

People Strengthened Through Community-Based DRR and OCA Programmes



186,842

Disaster Management Committee Members Fully Active and Functional



10,600

Community Volunteers Group Supporting Early Warning, Evacuation, Search & Rescue



1,908

People Trained and Oriented to Actively Engage in Community Preparedness



46,568

Climate Change Adaptation & Environmental Resilience

Villages Transformed and Declared as Eco-Villages



523

Schools Transformed into GEDSI-Friendly Green Schools



356

Trees Planted Nationwide to Restore Ecosystems and Livelihoods (FY 25 Till August)



1,450,227

Land Restored through FMNR*



50 hectares

Land Restored through Regreening Initiatives



186 hectares

Households Adopted Improved Cook Stoves

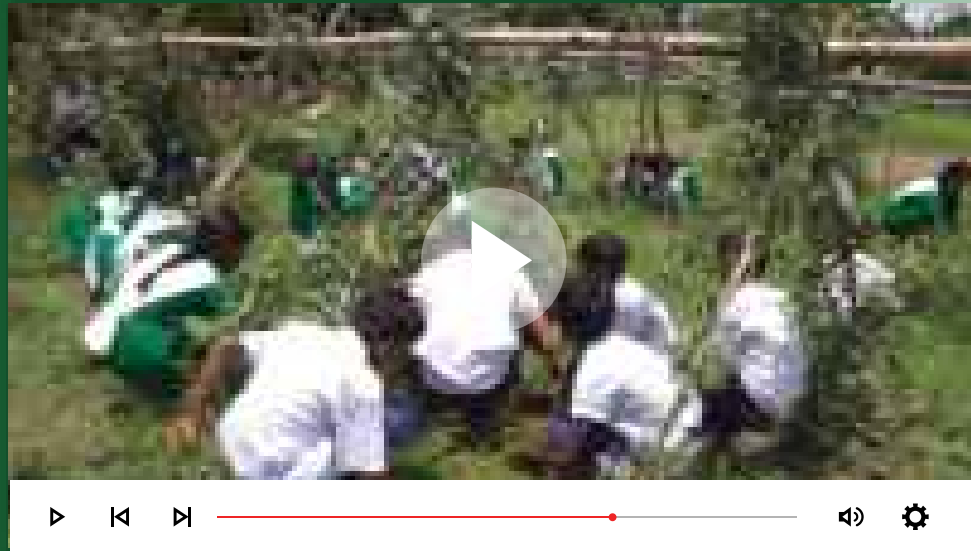


4,152

*FMNR: Farmer Managed Natural Regeneration

Climate change is reshaping the lives of vulnerable communities across Bangladesh.

World Vision Bangladesh is supporting families with climate-resilient livelihoods, ecosystem restoration, and disaster preparedness. Together with communities, we are building resilience to protect both the environment and the future of children.





ROHINGYA RESPONSE

STANDING WITH DISPLACED CHILDREN AND FAMILIES PROVIDING DIGNITY, PROTECTION AND CONTINUITY.

WHY IT MATTERS

Nearly one million Rohingya refugees continue to live in protracted displacement in Bangladesh — over half of them children. In the world's largest refugee settlement, access to safe water, nutrition, education, and protection is not only life-saving, it is life-defining. When essential systems weaken, risks such as child marriage, trafficking, malnutrition, and psychosocial distress increase. **When systems function** — even in crisis — **children are safer, families cope better, and communities remain more stable.**

The Bangladesh Rohingya Crisis Response is in its eighth year in 2025, going beyond the delivery of aid. It is about sustaining daily systems of care, protection, and learning with dignity. Because for Rohingya children, survival alone is not enough — they deserve safety, opportunity, and hope.

OUTPUTS

Children Accessing Learning



16,576

Households Accessing WASH



66,709

Children and Mothers Recovered from Malnutrition



10,061

People Supported through Child Protection & GBV Interventions



37,585

People Supported with Food Security



247,563

REACH

Total



352,970 people

Camps



333,961 people

Host Communities



19,009 people

Girls



93,565

Boys



86,522

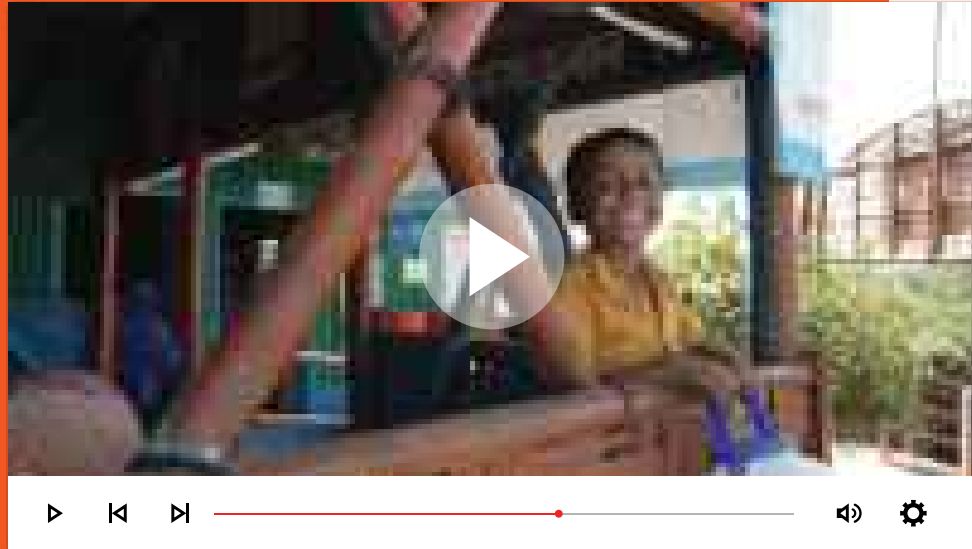
People with Disabilities



3,131

Forcibly displaced families deserve safety, dignity, and hope.

World Vision Bangladesh continues to deliver life-saving support through water, nutrition, protection, and community systems in the Rohingya camps. Together with partners, we stand with refugee children and families as they rebuild resilience in the face of crisis.





FAITH & DEVELOPMENT

STRENGTHENING THE VALUES, RELATIONSHIPS, AND SYSTEMS THAT SUSTAIN CHILD WELLBEING

WHY THIS MATTERS

Lasting change for children goes beyond service delivery—it requires shifts in **beliefs, norms, relationships, and everyday practices** within families and communities. Faith leaders and faith institutions remain among the most trusted and influential actors shaping social behaviour and social protection.

Faith & Development (F&D) is intentionally embedded as a core driver of change—mobilising faith leaders, parents, and community structures to protect children, strengthen families, and promote peaceful, nurturing relationships. Through structured models such as **Channels of Hope** and **Celebrating Families**, faith actors increasingly moved from individual influence to **collective, organised action**, challenging harmful practices and reinforcing positive caregiving, child protection, and social cohesion.

By strengthening faith institutions, family systems, and community leadership, World Vision Bangladesh helped institutionalise values that safeguard children—creating enabling environments where children are safer, valued, and supported to thrive. These system-level shifts ensure that change is not only achieved, but **sustained**, as faith-based structures continue to act as trusted custodians of child wellbeing within their communities.

REACH



OUTPUT



IMPACT

- Adolescents (12–18) with positive relationships with faith leaders: **12.3% → 28.0%**
- Adolescents reporting positive relationships with parents/caregivers: **33.5% → 57.7%**
- Adolescents reporting positive peer relationships: **15.2% → 35.7%**

Faith has the power to inspire compassion, responsibility, and collective action.

World Vision Bangladesh partners with faith leaders and communities to promote dignity, protection, and wellbeing for every child. Together, faith and community leadership are creating pathways for lasting transformation.





FINANCIAL STEWARDSHIP

WHY THIS MATTERS

Responsible financial stewardship ensures that every contribution entrusted to World Vision Bangladesh delivers maximum impact for vulnerable children and communities. **Transparent and accountable management** of resources enables us to **scale proven solutions, strengthen systems, and sustain life-changing programmes that help children** overcome poverty and experience life in all its fullness.

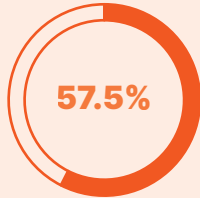
FINANCIAL SNAPSHOT

USD 67.18 million Total Programme & Operating Expenditure

This reflects the scale of delivery across development, humanitarian response, and systems-strengthening investments.

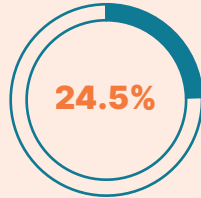
OBJECTIVE-WISE EXPENDITURE BREAKDOWN

**LIVELIHOODS & FOOD
SECURITY**



USD 38.62 million

**HEALTH, NUTRITION &
WASH**



USD 16.43 million

CPP & EDUCATION



USD 10.12 million

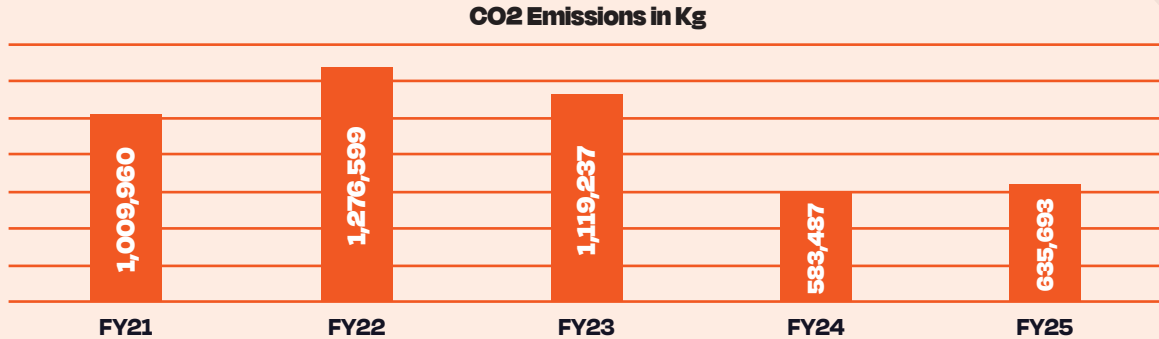
**NATIONAL OFFICE
SUPPORT & ADMINISTRATION**



USD 2.01 million

97% of expenditure was directed to programmatic objectives, reinforcing value for money. Investments clearly align with the Strategy and the Bridges to Impact framework. Spending patterns demonstrate a deliberate shift toward resilience, systems strengthening, and long-term child wellbeing, rather than short-term service delivery.

CO2 EMISSIONS IN KG



Over the past five years, the organisation strengthened its environmental governance by systematically measuring and managing CO₂. From a peak of **1.28 million kg CO₂** in FY22, emissions declined to **635,693 kg in FY25** — nearly a 50% reduction from the peak year. Electricity use and fleet operations remain the primary emission sources, guiding targeted efficiency and operational improvements.

Alongside reduction efforts, the organisation supported the plantation of 3.2 million trees over the last three years, advancing large-scale ecosystem restoration and climate resilience. Together, these actions reflect a balanced approach to climate stewardship — reducing emissions while investing in nature-based solutions that safeguard children and communities for the future.

PARTNERSHIPS THAT FUEL IMPACT



WHY THIS MATTERS

Lasting change for children cannot happen in isolation. **Strategic partnerships** with donors, institutions, corporations, and local actors enable World Vision Bangladesh to combine resources, expertise, and influence to scale solutions and **create sustainable impact for vulnerable children and communities.**

IMPACT WAS MADE POSSIBLE THROUGH:

- Support Offices
- Institutional donors
- Foundations
- Corporate & CSR partners
- Government and local partners



OUR PARTNERS



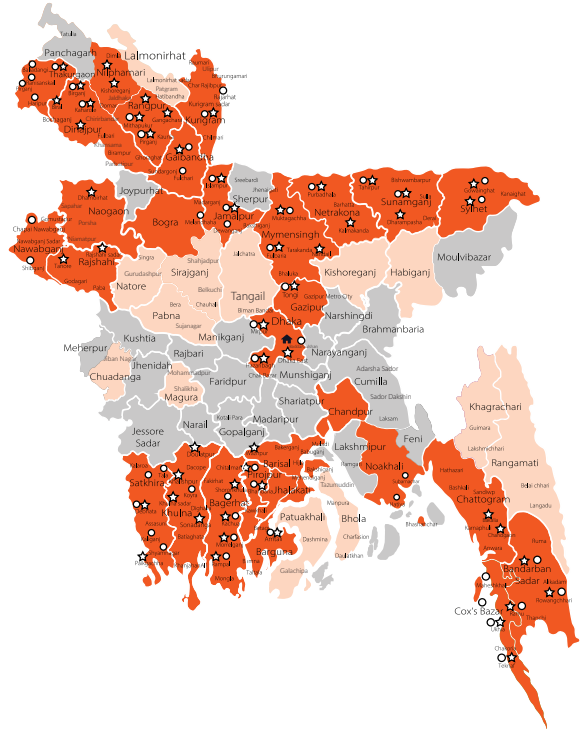
WHERE WE WORK

49
Long-term Area
Programmes (AP)

33
Grant & privately
funded projects

26
Districts

61
Sub-districts



- ☆ Area Programmes
- Grant Projects
- 🏠 National Office

- Existing Working Area
- Potential Growth Plan

**PARTNER
ADVOCATE
INVEST**

**Journey with us.
Together, we build bridges—from HOPE
to TRANSFORMATION.**

World Vision 



Shanta Western Tower, Level – 14 186 Bir Uttam Mir Shawkat Sarak,
(Gulshan – Tejgaon Link Road), Tejgaon (A, Dhaka, Bangladesh, PO Box – 9071



Phone: +88028878323-6
Fax: +88028878321



[/WV.BANGLADESH](#)

