



GENDER EQUALITY, DISABILITY, & SOCIAL INCLUSION

Capacity
Statement



Operational Areas in East Africa



World Vision is a global humanitarian, development and advocacy organisation dedicated to working with children, families and communities to overcome poverty and injustice.

World Vision operates in nine countries within the East Africa region: Burundi, Ethiopia, Kenya, Rwanda, Somalia, South Sudan, Sudan, Tanzania, and Uganda, with a robust presence. Each National office has a Gender Equality, Disability, and Social Inclusion (GEDSI) focal points responsible for the implementation of GEDSI management policy. The focal points are supported by the Regional GEDSI Advisor, ensuring that our commitment to GEDSI is effectively realised across the region.

Overview

World Vision is committed to advancing GEDSI across its programmes in the East Africa region. We recognise GEDSI as a fundamental driver of change, breaking down barriers that prevent the most vulnerable children and adults from reaching their full potential. Our holistic approach integrates GEDSI principles into all facets of our work, ensuring that marginalised populations—including women, children, and people with disabilities—are empowered and included in development processes.

We strive to increase access to health, education, water and sanitation, child protection, and livelihood opportunities for vulnerable children and their families across the region, enabling them to live fulfilling lives. Our efforts empower these individuals to fully participate in social, economic, and political processes. Additionally, we promote equal decision-making and work to transform both formal systems (such as legal frameworks and markets) and informal structures (such as traditional norms), fostering an environment conducive to sustainable change.

WVI GEDSI Approach



Challenges and Disparities

Progress reports indicate persistent gender disparities in education, employment, health, and women's participation in decision-making. Female labour force participation remains below 50% while Gender-Based Violence (GBV) remains a critical concern.

According to World Bank Group on average, 40% to 60% of women in the region have experienced some form of GBV, including physical, sexual, and emotional violence.

Moreover, according World Bank Group only 40% to 50% of women have access to formal financial services, with limited access to financial resources and digital technology continuing to hinder women entrepreneurs, particularly in rural areas.

Persons with disabilities constitute one of the world's largest minority groups, with an estimated 7% to 10% of the East African population living with some form of disability according to World Bank Group. However, social stigma and exclusion remain prevalent, further limiting their opportunities and access to essential services.



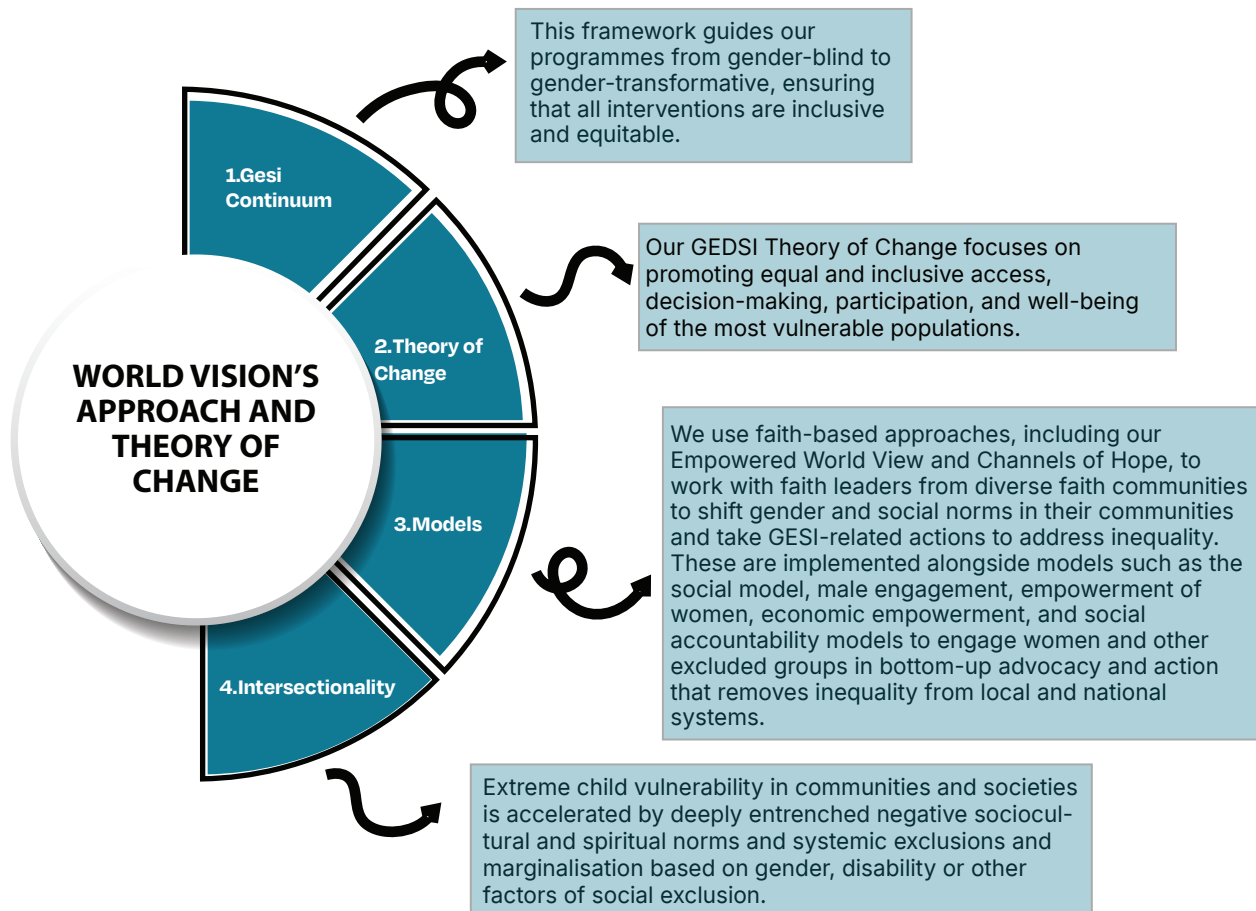
World Vision’s differentiator

World Vision promotes GEDSI while recognising that individuals are influenced by a variety of intersecting social factors beyond gender. These factors, which vary by context, include ethnicity, religion, disability, age, health status (such as; Human Immunodeficiency Viruses (HIV) status), socio-economic background, nationality, and migrant status.

We seek to build a world where all children have equal rights, value and opportunities. We work to transform power relations and systems that drive inequality and exclusion.

World Vision’s approach and theory of change

World Vision's GEDSI approach is integral to achieving Our Promise and child well-being objectives. Our approach includes:



Our GEDSI initiatives are guided by World Vision’s GEDSI approach and theory of change. This comprehensive framework includes a GEDSI design, monitoring, and evaluation (DME) toolkit, reference guides, and targeted staff training. Our programmes focus on five key GESI domains of change: access, participation, decision-making, systems, and well-being. These interconnected domains drive agency, transformation, and empowerment.

Impact

Impact on Children: In 2022, World Vision reached 16 million children out of a total of 26 million people in East Africa. In 2023, this impact grew to 16 million children out of 26 million people—a 23% increase in outreach.

Emergency Responses: During emergencies World Vision ensures GEDSI principles are integrated into all humanitarian efforts, safeguarding the rights of women, children, and persons with disabilities. In 2024 World Vision interventions

reached 17.9 million people, 9.5 million children, 1.5 million refugees and 260,000 people with disabilities.

Community Engagement: Through capacity-building initiatives, advocacy & policy influence (local, national, and international levels) we help address gender inequalities. We also tackle harmful cultural practices, such as: Child marriage, gender-based violence, and exclusion of persons with disabilities in our programming.

Our Partners

World Vision collaborates with partners who significantly contributes to our work. Key partners include:



World Vision is a relief, development and advocacy organisation dedicated to working with children, families and communities to overcome poverty and injustice. Inspired by our Christian values, we are dedicated to working with the world's most vulnerable people. We serve all people regardless of religion, race, ethnicity or gender.

World Vision East Africa Regional Office | Karen Road, off Ngong Road | P.O. Box 133-00502, Nairobi, Kenya
Phone: +254 711 086 000, +254 732 126 000