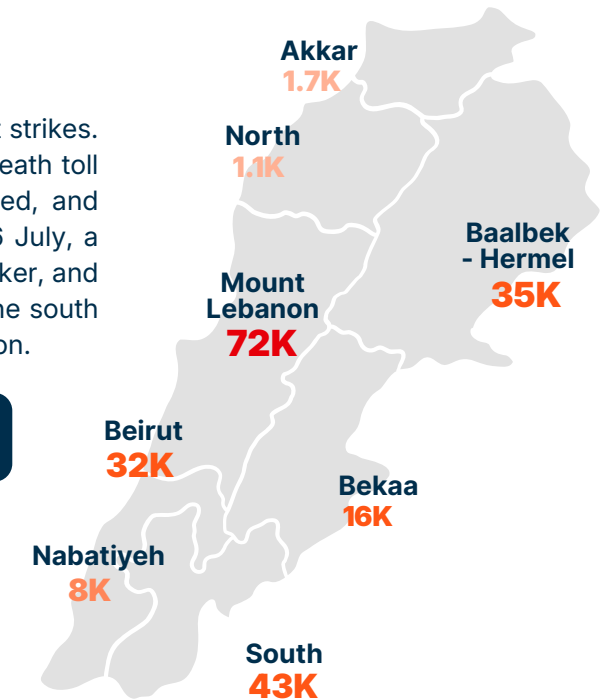


EMERGENCY RESPONSE IN LEBANON

Situation Update | 2 March -9 July 2026



The ceasefire that took effect on 19 June has held in broad terms but continues to be tested by intermittent strikes. Attacks in southern Lebanon have continued, though less frequently than in the war's earlier phase. The death toll has continued to increase with roughly 190 deaths since 19 June while displacement remains prolonged, and prospects for safe return are still constrained by damaged housing, insecurity, and limited services. On 6 July, a vehicle was struck in Nabatieh al-Fawqa, killing four civilians, a school principal, her mother, a domestic worker, and a Syrian national, as they returned from checking on a war-damaged home. The military zone in parts of the south remains a persistent source of friction, with forces reported to be present in various villages of South Lebanon.



Number of internally displaced individuals reached by WV per governorate

HUMANITARIAN SNAPSHOT



~499,784

PEOPLE DISPLACED

~646,107

RETURNEES



4,305

PEOPLE KILLED

including 247
Children



12,203

PEOPLE INJURED

including 992
Children



350

ACTIVE
COLLECTIVE
SHELTERS

KEY DEVELOPMENTS DURING THE REPORTING PERIOD (2 March till 9 July 2026)



Ceasefire violations continue

Despite the truce, strikes have continued almost daily, including a renewed attack on 6 July that killed 4 civilians in Nabatieh al-Fawqa. More than 200 people have been killed since the ceasefire took effect.



Displacement continues

Since the ceasefire, roughly 56.4% of displaced families have cautiously begun to return to their areas of origin. But heavy damage and a fragile ceasefire are keeping most civilians from going home. A total of roughly 23,058 buildings, including 21,059 housing units, were documented, meaning that for many families there is simply **no home to return to**.



High human cost persists

Since 2 March, 247 children have been killed and 992 injured (an average of 12 children killed or injured every day) and violence against children has continued despite diplomatic efforts. Attacks on healthcare have resulted in 135 health worker deaths and 406 injuries.



Access Remains severely constrained

Movement restrictions, damaged infrastructure, and funding gaps continue to limit humanitarian access and threaten critical services, particularly WASH and healthcare.



WE HAVE REACHED 215,337 INDIVIDUALS (INCLUDING 75,368 CHILDREN)

↳ 184,850 LEBANESE NEW IDPS (INCLUDING 64,698 CHILDREN) IN 532 COLLECTIVE SHELTERS.

↳ 30,487 NEWLY ARRIVED SYRIANS CROSSING INTO LEBANON (INCLUDING 10,670 CHILDREN).



2.4M+
HOT MEALS



133K+
NUTRITIOUS
SNACKS



15,139 m³
WATER
TRUCKING



11,917
FAMILY
HYGIENE KITS



48,749
CHILDREN IMPACTED
BY PSYCHOSOCIAL
SUPPORT



10,530
BLANKETS



9,660
MATTRESSES



11,262
READY-TO-EAT
FOOD



3,629
MENSTRUAL
HYGIENE KITS



19,899
CHILDREN SUPPORTED
WITH RECREATIONAL
ACTIVITIES



450
LATRINES
REHABILITATED

OPERATIONAL CONSTRAINTS

- Widespread contamination by unexploded ordnance (UXO) continues to endanger civilians and humanitarian actors, restricting safe access to affected communities.
- Extensive destruction of housing and critical infrastructure, alongside limited access to basic services, hampers service delivery and response implementation.
- Ongoing displacement, partial returns, and "go-and-see" visits complicate targeting, planning, and continuity of assistance. While returns amid insecurity, damaged infrastructure, and inadequate services heighten protection risks and the challenge of prioritizing between returnee and displaced populations.
- Significant funding gaps (Flash Appeal only 34.2% funded) limit the ability of partners to scale up response and sustain assistance.

ADVOCACY PRIORITIES

World Vision calls on all relevant actors for:

- Protection of civilians - full respect for IHL, with particular attention to children and to civilian infrastructure, especially health facilities and personnel.
- Consolidate the ceasefire into a durable end to hostilities, backed by diplomatic mechanisms to ensure implementation and accountability.
- Enable safe, voluntary, dignified return and unimpeded humanitarian access to all affected communities, especially out-of-shelter populations.
- Close the funding gap - Increased, flexible humanitarian funding to meet Flash Appeal gap.
- Expanded cash-based assistance, where markets allow, to enable families to meet priority needs.
- Sustain child-focused services like Child protection, MHPSS, education, and recovery support for children.
- Maintain safe, inclusive and increasingly in-person learning opportunities for vulnerable children, particularly those in shelters, children with disabilities, girls, and children in hard-to-reach conflict-affected areas, in alignment with MEHE priorities.

LOOKING AHEAD

Our priorities for the next period:

- Scale up emergency multi-purpose cash assistance (eMPCA) for IDPs outside collective shelters.
- Expand WASH services in displacement and return areas.
- Improve access to primary healthcare in high-need and hard-to-reach areas.
- Strengthen protection services and mine risk education, particularly in areas affected by UXO contamination.
- Sustain education support as schools prepare to reopen, enabling children's return to learning after seven consecutive years of disruption.
- Maintain support to collective shelters for remaining IDPs.
- Expand livelihoods and resilience through short-term, income-generating cash-for-work activities.
- Promote community-based initiatives that strengthen social cohesion between displaced and host communities and encourage inclusive participation in service delivery.

OUR PARTNERSHIPS

22

**PARTNERS
ACROSS
LEBANON**

- Continued response delivery through 22 local partners across six sectors and all governorates, sustaining access to displaced, host, and return communities.
- Maintained a partner-led delivery model, with local organisations leading frontline implementation and community engagement, while WVL provides technical support, safeguarding, Monitoring and Evaluation (MEAL), financial oversight, data protection, security, and donor compliance.
- Under AHP, Imam Sadr Foundation and WILL Association contributed to programme design and continue to lead health, protection, and WASH delivery; 95% of the project budget is channelled through nationally registered entities, including 55% directly to independent Lebanese partners.
- Continued capacity strengthening for active partners on safeguarding, PSEAH, Code of Conduct, financial management, procurement, MEAL, accountability, referrals, data protection, and security management.
- Strengthened coordination through joint monitoring, implementation reviews, adaptive management, and partner participation in learning processes.
- Continued engagement with the LHIF Partnership and Localisation Working Group, contributing to collective localisation benchmarks and equitable partnership practices across the Lebanon response.

Voices from the Field

"The loss of income caused by conflict pushes education out of reach, denying children the chance to learn, grow, and build a better future."

- Joseph Homsy and Najib Swidan, World Vision Lebanon team members

“We were at home when the bombing suddenly started. We got scared and ran away. Some people helped us find this place.”



Rawan, 9 years old

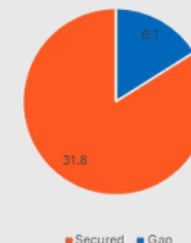
We would like to thank the hundreds of thousands of generous child sponsors, donors, and supporters whose contributions make this work possible:



World Vision Lebanon met its funding target for the first 90 days of the emergency response Funding as of July 9 (US\$)

**Total funding secured so far:
US\$ 31.8M**

**Updated Funding Target:
US\$ 38M until September 2026**



MARCH 2

- Response launched with a target of 15M from March 2–May 31.
- Leveraged anticipatory funding from Start Fund (US\$ 410K) and repurposed funding from DEC, OCHA and WFP (US\$ 118K).
- Reallocated 20% of funding (~US\$400K) from three WV sponsorship programme.

APRIL 2

- One month into the response – US\$ 9.8 M new funding secured against 15M target.
- This included major contributions from WFP (US\$ 7.34M), UNOCHA (US\$ 1.15M), and KOICA (US\$ 219K), alongside funds from Action Deutschland Hilft (ADH) / WV Germany (US\$ 477K), Irish Aid (USD 164K), and WV Support Offices (US, HK, NZ, Taiwan) (US\$ 458K).

MAY 31

- 3 months into the response, US\$ 30.5 M in new funding was secured, including support from UN OCHA, WV Australia, WV Germany, WV UK, WV Korea, WV Ireland, and WV Support Offices (US, Hong Kong, New Zealand, Taiwan, Malaysia, and France).

World Vision



FOR FURTHER INFORMATION, PLEASE CONTACT:

Heidi Diedrich
National Director
heidi_diedrich@wvi.org

Elissar Gemayel
Response Director
elissar_gemayel@wvi.org

Evita Jourdi
Advocacy & Communications Senior Advisor (MEER)
evita_jourdi@wvi.org