

# **ANNUAL PROGRESS REPORT FY25**

(October 2024 - September 2025)





## ABOUT US

World Vision (WV) is a child-focused relief, development and advocacy organisation that has contributed to transformation in the lives of millions of children around the world in vulnerable situations. WV aspires to achieve this through partnership with local communities, civil societies, local partners, government, donors and private sectors where we believe in mutual participation and trust, shared vision and goal, accountability and responsibility. We are a child-focused organisation driven by Christian values to serve children and families regardless of their religion, age, gender, ethnicity, class and caste.

World Vision International (WVI) Nepal is a part of the World Vision International global partnership operating in nearly 100 countries. WVI started its long-term development programme in Nepal in 2001 to contribute for well-being of children. At present, WVI Nepal has long-term development programmes in 17 districts, namely Udayapur, Sarlahi, Mahottari, Rautahat, Sindhuli, Kathmandu, Lalitpur, Lamjung, Jumla, Kailali, Kanchanpur, Achham, Doti, Dailekh, Jajarkot, Banke and Bajhang across the seven provinces of Nepal.

World Vision International Nepal implements its country strategy through integrated sectoral interventions with innovation in local communities and neighbourhoods. The current programmes are Inclusive & Quality Education, Protection & Community Engagement, and Nutrition and Resilient Livelihoods with Gender Equality, Disability and Social Inclusion (GEDSI), along with Disaster Risk Reduction and Climate Change Resilience as crosscutting agendas contributing to the well-being of children.



## OUR FUNDING

We receive funding from individuals, foundations and government donors through World Vision support offices and donor agencies.



## OUR CORE VALUES

We are Christian  
We are committed to the poor  
We value people  
We are stewards  
We are partners  
We are responsive



## OUR VISION

Our vision for every child, life in all its fullness.  
Our prayer for every heart, the will to make it so.

*Together we've impacted the lives of over 200 million vulnerable children by tackling the root causes of poverty*

## OUR FOCUS



**EDUCATION**  
Quality, safe and inclusive basic education is accessible for children



**RESILIENCE**  
Increase community resilience to disasters and economic shocks



**HEALTH AND NUTRITION**  
Improve child health

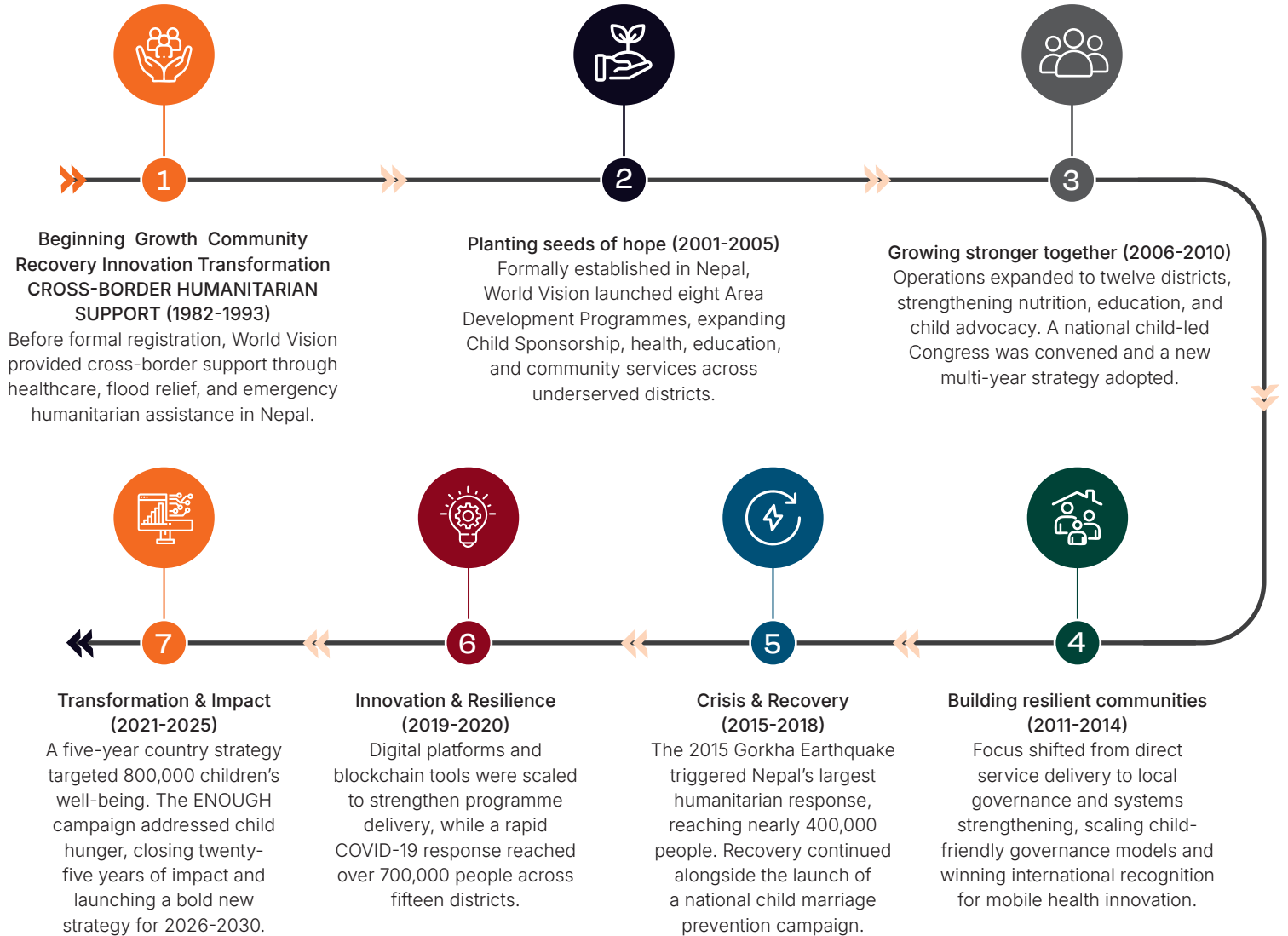


**PROTECTION**  
Increase protection for vulnerable groups

### Our Strategic Goal (FY21-25)

We are proud to share we met our goal of "improving the well-being of 0.8 million children, particular the most vulnerable ones" by FY25

## OUR JOURNEY





**Key Donors**



**25**  
Years in operation

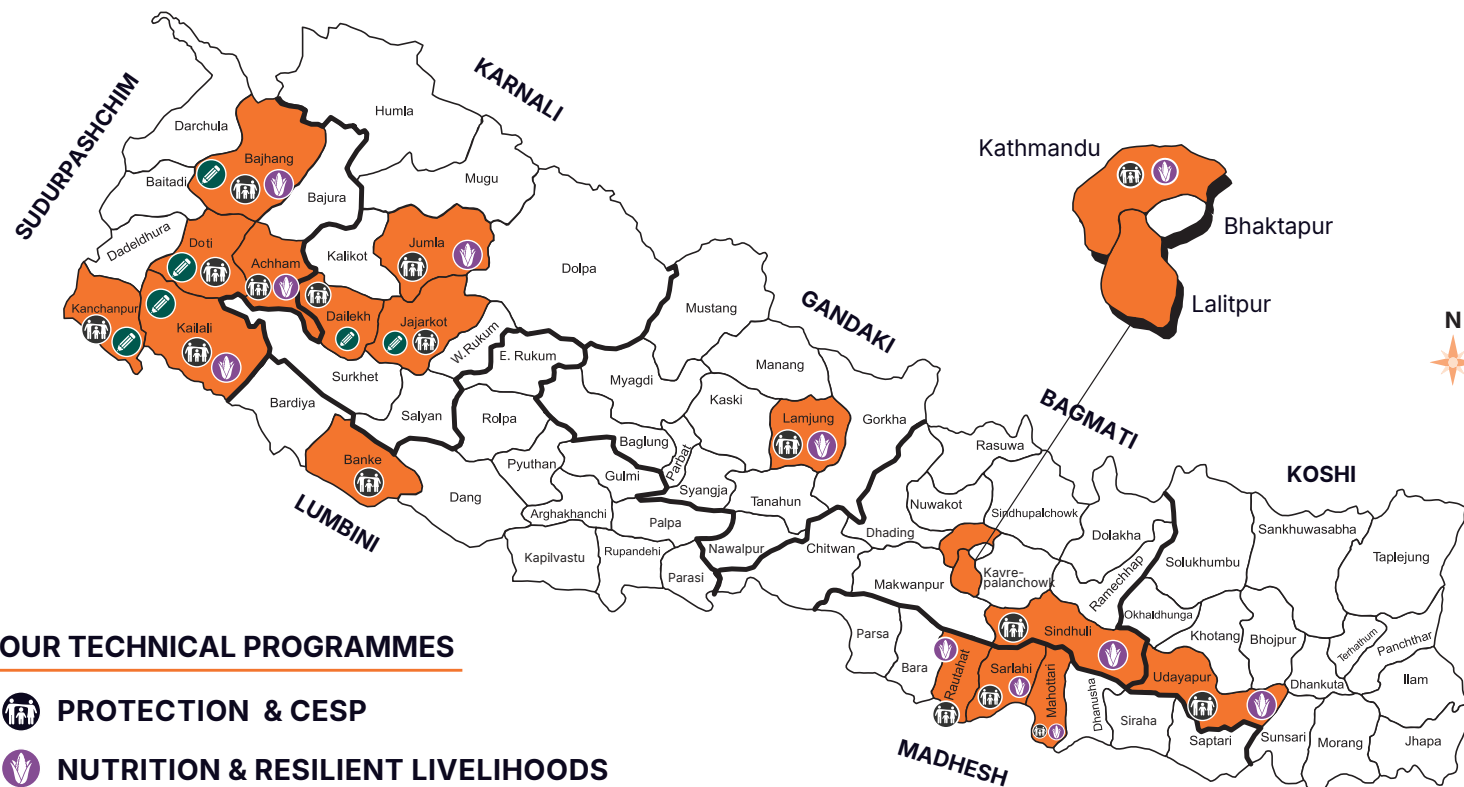
**7**  
Provinces

**17**  
Districts

**27**  
PNGOs

**160+**  
Staff

**OUR WORKING AREAS IN FY25**



**OUR TECHNICAL PROGRAMMES**

- PROTECTION & CESP**
- NUTRITION & RESILIENT LIVELIHOODS**
- INCLUSIVE & QUALITY EDUCATION**

## MESSAGE FROM THE NATIONAL DIRECTOR



As we step into a new season I am happy to share with you the Annual Progress Report for 2025, a testament to what becomes possible when communities, partners, and a dedicated team unite around the well-being of every child.

Nepal's children continue to grow up in a context of both remarkable resilience and persistent challenge. Poverty, geographic remoteness, internal migration, recurring floods and landslides, climate-related shocks, and deeply rooted social inequalities remain formidable barriers to a full life for far too many boys and girls. Yet it is precisely in the face of these realities that World Vision International Nepal's mandate becomes most urgent and meaningful. Our mission has always been to work alongside the most vulnerable, guided by our conviction that every child deserves life in all its fullness.

In FY25, we reached 448,342 individuals across 17 districts, including 307,961 children—among them 107,569 of the most vulnerable. These are not simply numbers. Behind each figure is a child who now reads confidently in a better classroom, a mother who understands her child's nutritional needs, a family whose household is more resilient to disaster, and a young woman who has chosen her own future over an early marriage. Our integrated approach spanning inclusive and quality education, health and nutrition, protection, resilient livelihoods, disaster risk

management, and innovation ensures that no single dimension of a child's well-being is addressed in isolation.

I am proud of the strides we have made this year in child participation and policy influence. The endorsement of 36 child-related policies and guidelines at federal, provincial, and local levels reflects the power of sustained advocacy and meaningful collaboration with government. We supported one of our child club leaders to attend the Nutrition for Growth Summit in Paris and it was compelling to see a confident Nepali girl standing before global leaders representing children from across Asia, a powerful reminder that the children we serve are not only beneficiaries of our work, but agents of change in their own right. Closer to home, our Child Human Rights Defenders, child-led Universal Periodic Review process and National Online Safety Child forum gave children a voice in shaping the future they deserve.

None of this progress belongs to us alone. It is the fruit of extraordinary partnership with 27 local Partner Organisations and 7 other collaborating organisations, local and federal governments, communities, interfaith leaders, children, families, volunteers, and the donors/sponsors across 11 countries who believe in the potential of Nepal's children. To each of you, I offer my deepest appreciation. Your trust, generosity, and collaboration make transformation possible.

This year, we successfully concluded our five-year Country Strategy (2021–2025) a chapter of deliberate, evidence-driven work that has deepened our roots in communities and sharpened our focus on the children who need us most. Completing a strategy is not simply an administrative milestone; it is an opportunity to reflect honestly on what we have built, what we have learned, and what must still be done. We are proud of the foundation laid, and we carry those lessons forward with humility and conviction. With the launch of our new Country Strategy, we step into the next chapter with renewed clarity of purpose, enhanced integration of our program, strengthened partnerships, and a bold commitment to expand our reach and deepen our impact for the children of Nepal.

As we look ahead, we will continue to prioritise the most marginalised, invest in locally led solutions, strengthen systems, and hold ourselves accountable to the communities we serve. Together, I am confident that we will build a Nepal where every child is protected, nourished, educated, and empowered to flourish.



With gratitude,  
**Roslyn H. Gabriel**  
 National Director  
 World Vision International Nepal



## CONTENTS

About Us	3
Inclusive and Quality Education	13
Nutrition and Resilient Livelihood	18
Protection and Community Engagement	28
Disaster Risk Management and Humanitarian Response	32
Gender Equality, Disability and Social Inclusion	36
Programme Accountability	42
Advocacy and Campaign	44
Child Sponsorship	50
Nepal Innovation Lab	51
Grant Projects	53
Our Implementing Partners	66

## FY25 IMPACT AT A GLANCE

**448,342**



Total Programme  
Participants

**307,961**



Total  
Children Reached

**140,381**



Total Adult  
Reached

**107,569**



Most Vulnerable  
Children (MVC)

**54,404**



Vulnerable children  
reached

**77,184**



Registered  
children reached

**53,547**



Most Vulnerable  
Families

**4,141**



People with  
Disabilities (PwDs)

**7,545**



Out-of-school  
Children

**20.38%**



Participants from  
Dalit communities

## PROGRAMME IMPACT



» World Vision International Nepal implemented integrated programmes addressing key dimensions of child well-being. These programmes focused on improving access to quality education, strengthening health and nutrition services, supporting resilient livelihoods, protecting children from violence, and strengthening community resilience to disasters.

### Local Partnership

The work is delivered through community-based and local partnership approaches that empower families, strengthen local institutions, and build longterm resilience.

## INCLUSIVE AND QUALITY EDUCATION

» Access to quality and inclusive education remains a challenge for many children in Nepal, particularly those living in remote communities, marginalized households, and areas affected by poverty or disasters. Limited learning resources, inadequate infrastructure, and insufficient teacher capacity often hinder children's learning outcomes.

WVI Nepal's Inclusive and Quality Education (IQE) programme works to ensure children learn in safe, inclusive, and child-friendly environments. The programme aligns with Sustainable Development Goal 4 and contributes to Nepal's School Education Sector Plan (SEP 2022–2032). In FY25, these efforts collectively reached 27,441 children across 227 schools, strengthening inclusive and safe learning environments for the most vulnerable.

The programme promotes holistic improvements in education through approaches including:

- Unlock Literacy (UL)
- Learning Roots (LR)
- Citizen Voice and Action (CVA)
- Comprehensive School Safety (CSS)
- Catch-Up Programme (CUP)



## ACHIEVEMENTS



**72 classrooms**

Child-friendly seating arrangements



**438 classrooms**

Print-rich learning materials



**118 children**

Assistive devices provided



**28 classrooms**

Classroom construction/renovation



**32 facilities**

WASH facilities improved in schools



**188 events**

Disaster simulation drills



**438 classrooms**

Classroom corner libraries established



**784 children**

**(G-363, B-421)**  
Learning materials provided to children



**8 schools**

supported with computer lab with **160** computers for digital education



**1,500 households**

Reading corners supported at home



**9,720 caregivers**

Positive parenting sessions



**5 local governments**

Local education policies supported



**410 events**

Mobile learning events



**413 teachers**

Teachers trained



**110 schools**

School DRR plans developed



**319 children**

Bridge classes for out-of-school children



**270 events**

School enrolment campaigns



**240 groups**

SMC/PTA capacity building



**27,441 children**

Disability screening



**372 reading camps**

Reading and mathematics clubs



**146 schools**

School Improvement Plan (SIPs) developed in support of WVI Nepal

## Impact on Children

Through reading camps, classroom libraries, and teacher capacity development, children gained more opportunities to practice reading, strengthen foundational learning skills, and participate actively in the classroom.

Children with disabilities also benefited from screening and assistive device support, enabling them to participate more fully in school activities.

Community participation increased through parent engagement sessions, school management committees, and Citizen Voice and Action groups, helping communities advocate for improved education services.



## STORY OF IMPACT

### Creating Safer Learning Spaces for Children

Jalpa Basic School in Bajhang District once struggled with deteriorating infrastructure that posed risks to students and teachers. The old building leaked during heavy rain, lacked sufficient classrooms, and provided limited learning materials. As a result, children often felt unsafe and learning was frequently disrupted.

With support from World Vision and its local partners, the school received new classroom buildings, improved seating arrangements, and additional learning materials. Teachers were also trained in child-centered teaching approaches to improve learning outcomes.

Today, the school provides a safer and more supportive learning environment. Students feel more secure attending classes, and the improved facilities allow teachers to conduct lessons more effectively. Children now participate more actively in learning activities and attend school regularly.

## NUTRITION AND RESILIENT LIVELIHOOD



### HEALTH AND NUTRITION

» Malnutrition and limited access to maternal and child health services continue to affect many communities in Nepal, particularly among vulnerable and marginalized families. Limited awareness of nutrition practices, inadequate WASH facilities, and barriers to accessing health services contribute to poor health outcomes for mothers and children.

WVI Nepal's Health and Nutrition programme strengthens community awareness and local health systems to ensure mothers and children receive essential services and knowledge for healthy lives.

In FY25, health and nutrition interventions reached 76,560 children and a total of 109,048 people, contributing to improved maternal and child health outcomes across programme communities.

#### Programme Approach

Key programme strategies include:

- Community-based nutrition interventions such as the Positive Deviance Hearth Plus (PDH+) model
- Capacity strengthening of health workers and volunteers
- Social and behaviour change communication through community awareness campaigns
- Strengthening local governance and citizen engagement through Citizen Voice and Action (CVA)
- Partnerships with government institutions to strengthen health service delivery

These approaches aim to improve both service availability and household practices related to health and nutrition.

## KEY ACHIEVEMENTS

**32** new Mothers Groups formed and **546** existing groups further supported

**8,209** Pregnant and lactating mothers reached

**532** Female Community Health Volunteers trained

**34,398** Children receiving Growth Monitoring and Promotion services

**9,930** Malnourished children enrolled in PD Hearth sessions

**7,680** Children followed up through home visits

**3,944** Children achieving adequate weight gain

**32,591** Schoolchildren receiving health screenings

**3,639** Children benefiting from health and nutrition initiatives in Schools

**57** Citizen Voice and Action groups formed, with **2847** actively engaged in regular meetings

**2,847 people** Participants engaged in CVA groups

**17 facilities** Health facilities receiving equipment support

**321** Children referred for severe acute malnutrition treatment

**20** Health workers trained on adolescent-friendly services

**23** Teachers trained in comprehensive sexuality education

**398** Adolescents and stakeholders trained on GBV prevention

**532** Menstrual hygiene kits distributed

**50+** Participants trained on reusable pad-making



These initiatives strengthened community health awareness and improved the capacity of health facilities to deliver essential services for mothers and children.

### Impact on Communities

The programme contributed to improved nutrition practices among families, strengthened maternal and child health services, improved nutritional status of under-five children, and increased community awareness about health and nutrition.

Mothers and caregivers gained practical knowledge on child nutrition and healthcare, while health facilities received equipment and training that improved service quality.



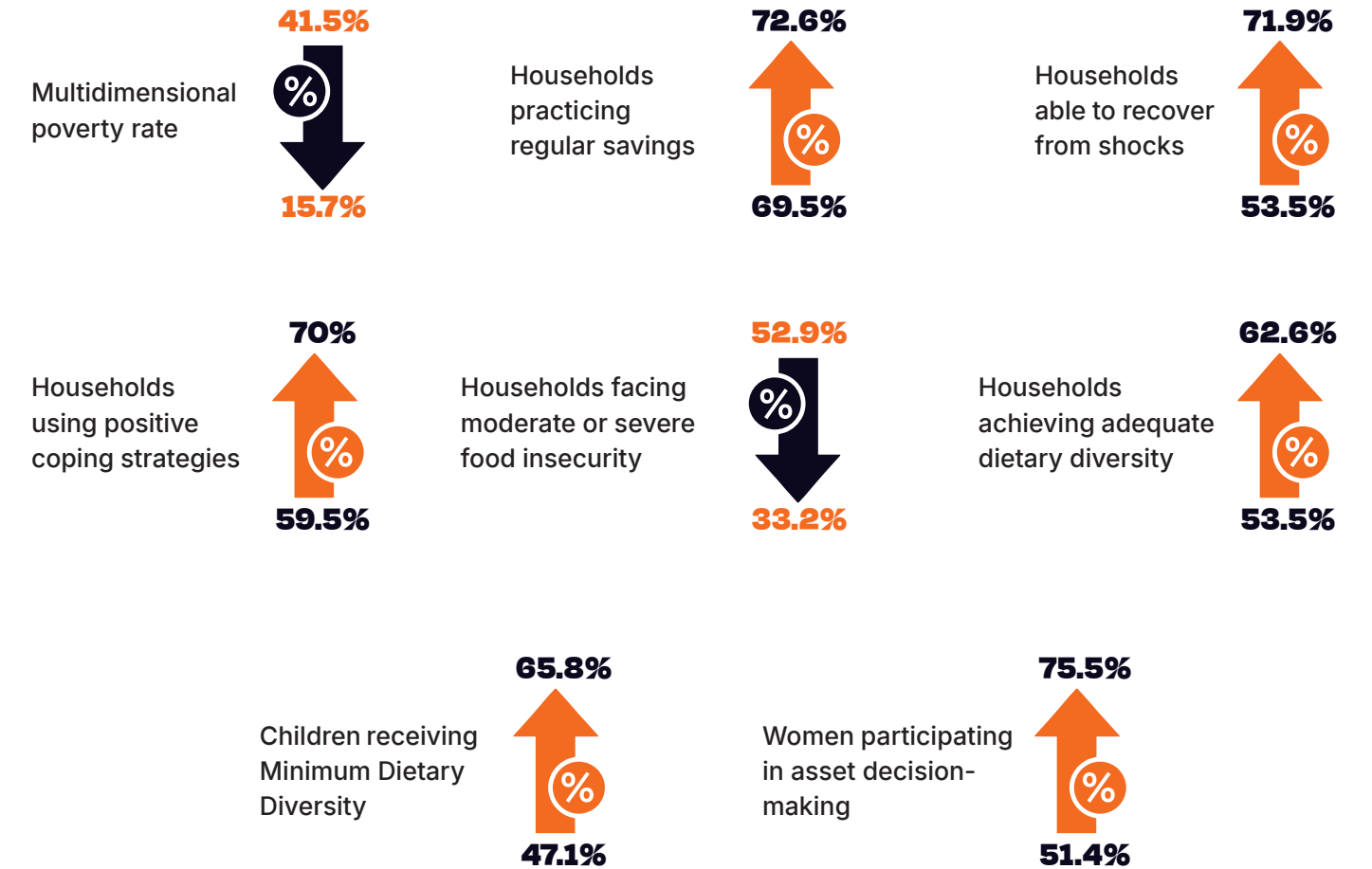
## RESILIENT LIVELIHOOD

» Many families in Nepal face ongoing economic challenges, including limited income opportunities, climate-related shocks, and food insecurity. These challenges often affect children's well-being, including their access to education, nutrition, and healthcare.

WVI Nepal's livelihood programmes strengthen the economic resilience of families particularly those living in poverty by supporting sustainable income-generating activities and climate-resilient agriculture.

In FY25, livelihood interventions supported 20,280 households reaching 32,660 children and 74,024 people in total strengthening economic resilience and improving food security across programme areas.

## Key Programme Outcomes (Indicator & Progress)



## KEY ACHIEVEMENTS



**248**  
Local Market  
Facilitators established



**1014** Producer groups  
supported, benefitting  
more than **18,500** farmers



**5,631**  
Families trained in climate-  
smart agriculture



**101**  
Climate Field Schools  
established



**18,875**  
Families oriented on  
indigenous crops



**1,256**  
Households graduating  
from poverty  
programme



**1,890**  
Families establishing  
alternative livelihoods



**359**  
Youths receiving skill  
development training



**16,202**  
Women trained in  
market literacy



**4,387**  
Women supported  
through economic  
empowerment  
programmes



**85**  
Savings for Nutrition  
groups established



## STORY OF IMPACT

### Goat Farming Improving Family Livelihoods

Laxmi a 47-year-old woman from Lamjung, struggled to support her family through small-scale farming. With limited income and increasing household responsibilities, providing education and care for her granddaughter became difficult.

Through a livelihood programme implemented by World Vision International Nepal in partnership with the Rural Community Development Centre, Laxmi received two female goats and training on improved goat farming practices. She was also supported to construct a goat shed and became a member of a local producer group.

Over time, her goat herd increased from two to fourteen goats. By selling several goats, she generated income that helped support her household expenses and her granddaughter's education. She also opened a savings account for her granddaughter and continues to save regularly through her community group.

Today, Laxmi is more confident in managing her livestock business and plans to expand it further, providing greater stability for her family's future.

Beyond her household, Laxmi's success has motivated her community. At least five neighboring households have expanded their livestock holdings from the initial support of two goats, following similar practices. S4T groups in the area, including Kolbato (19 members) and SrijanatoI (15 members), demonstrate strong peer learning and collective progress, with all members engaged in goat and pig rearing. Group savings are actively used as internal loans for livelihood investments, education, and health expenses showing how the intervention prototype, combined with S4T mechanisms, is contributing to broader community-level impact and economic empowerment.



# CHILD PROTECTION AND COMMUNITY ENGAGEMENT

Children in many communities continue to face risks such as child marriage, gender-based violence, harmful traditional practices, and limited participation in decisions affecting their lives. Addressing these challenges requires strengthening both community awareness and local child protection systems.

World Vision International Nepal works with communities, Partner NGOs, adolescents, inter-faith groups and local governments to protect children from violence and promote safe, supportive environments where children can grow well.

In FY25, protection and community engagement programmes reached 162,491 children and a total of 207,518 people, strengthening local child protection systems and empowering communities to safeguard children's rights.



## KEY ACHIEVEMENTS



**11 new wards**  
Declared as Child Friendly Local Governance (CFLG)



**32**  
Total wards supported for CFLG declaration



**41**  
Local governments forming Local Child Rights Committees



**223**  
Ward-level child rights committees formed



**36**  
Local governments establishing Child Funds



**31**  
Local child protection policies formulated



**19**  
Local strategies addressing child marriage



**9**  
Policies addressing child labor



**18,924**  
Children and adolescents trained in life skills



**6,558**  
Parents receiving positive parenting sessions



**2,069**  
Survivors receiving psychosocial support



**3 wards**  
declared child marriage free



**87**  
Child marriages prevented



**24,350**  
Children participating in child clubs and networks



**177**  
Child club networks supported



**1 ward**  
declared Child-Labour Free

These initiatives strengthened local child protection systems while empowering children and adolescents to actively participate in promoting and protecting their rights.

## STORY OF IMPACT

### A Young Advocate for Girls' Rights

Poonam, an 18-year-old girl from Rautahat district, grew up in a community where traditional norms often limit opportunities for girls. Early marriage and gender-based discrimination are common challenges faced by many girls in her community.

Through programmes supported by World Vision International Nepal, Poonam participated in life skills training and youth empowerment initiatives including media and storytelling training that helped her understand her rights and build confidence. She became actively involved in child clubs and community awareness programmes addressing issues such as child marriage and gender-based violence.

Today, Poonam conducts life skills sessions for younger children and actively advocates for girls' education and gender equality in her community. She has also engaged local leaders through youth-led discussions and community dialogues, encouraging stronger action to protect children from harmful practices.

Her journey reflects how empowering young people can contribute to positive change within their communities.



## DISASTER RISK MANAGEMENT AND HUMANITARIAN RESPONSE

➤ Nepal remains highly vulnerable to natural disasters, including floods, landslides, earthquakes, and drought. These hazards can severely affect communities, particularly children and vulnerable households. World Vision International Nepal works with communities and government institutions to strengthen disaster preparedness, build resilience, respond quickly when disasters occur and support for early recovery. WVI Nepal coordinated the Disaster Management Task Group at the AIN level, with the objective of maximizing collective impact through enhanced collaboration, mutual learning, and knowledge sharing, thereby contributing to the development of a more disaster-resilient country.

The Disaster Risk Management programme focuses on promoting understanding disaster risk, strengthening community capacity, improving disaster governance, and ensuring that vulnerable families are able to prepare for and respond effectively to emergencies.



## KEY ACHIEVEMENTS



**4** Local government DRR plans/ guidelines updated



**607** Community members participating in drills



**91** Community disaster management operational guidelines developed



**115** School safety plans reviewed



**781** Disaster preparedness training participants



**52 communities** Flood markers installed



**9,600** Teachers and students trained through mock drills



**6** Disaster mitigation measures implemented



**1,029** Community people oriented on DRM plan



**290** Community members trained in bioengineering practices



Disaster preparedness equipment provided to committees  
 Local Disaster Management committee (LDMC):**2**, Ward Disaster Management committee (WDMC):**20**, Community Disaster Management committee (CDMC):**85**

These activities helped communities identify risks, strengthen disaster preparedness systems, and improve coordination among local stakeholders.

### Emergency Response

During FY25, WVI Nepal responded to disasters affecting vulnerable communities.

Emergency Response People Reached



**30,159** Flood and landslide response in Rautahat and Sindhuli



**9,082** Drought response (WASH support) in Madhesh Province

Support included emergency food assistance, shelter materials, Cash Voucher Assistance, WASH services, and nutrition support for affected households.



## GENDER EQUALITY, DISABILITY AND SOCIAL INCLUSION (GEDSI)



➤ World Vision International Nepal integrates Gender Equality, Disability, and Social Inclusion (GEDSI) approach across all programmes to ensure that development initiatives must benefit the most vulnerable populations.

In FY25, programmes prioritized the inclusion of women, children with disabilities, and marginalized communities, including Dalit communities.

## KEY ACHIEVEMENTS



**4,141** persons with disabilities reached through programmes



**87** Incidents of child marriage successfully stopped or prevented.



**19** Interfaith leaders were formally trained in social norm transformation to combat domestic violence and child marriage.



**27,441** children screened for disabilities



**118** children supported with assistive devices



**8,209** Pregnant and lactating mothers reached with health and nutrition services through 578 (32 new + 546 existing) Health Mother Groups.



Women representing more than **83%** of participants in livelihood programmes



**50** Girls trained on reusable sanitary pads.



**51** Local municipalities developed and adopted GEDSI action plans; transitioned programming from "GEDSI-sensitive" to "GEDSI-responsive."



**4,387** Women benefitted through women economic empowerment interventions



**532** Menstrual Hygiene Management kits distributed to adolescent girls.

These interventions helped ensure that children and families who often face barriers to services and opportunities were included in programme benefits.

## STORY OF IMPACT

### Unlocking Confidence Through Creativity

Devaki a 16-year-old girl from Kathmandu, once struggled with low confidence and limited opportunities to express herself. Her parents worked long hours as daily wage laborers, and Devaki often felt isolated both at school and in her community.

Through programmes supported by World Vision and its partner organizations, Devaki participated in creative workshops and child expression activities that encouraged children to explore art, storytelling, and community engagement.

With support from facilitators and peers, Devaki began to showcase her drawings publicly and contribute to community awareness initiatives. Over time, her confidence grew, and she became an active participant in creative programmes and youth initiatives.

Today, Devaki confidently shares her artwork and participates in community activities, inspiring other children to believe in their own potential. Her journey reflects how creative expression and child participation programmes can strengthen children's confidence and well-being.



## INFRASTRUCTURE HIGHLIGHTS IN FY25

In FY25, World Vision International Nepal strengthened community services by investing in safe learning environments, water and sanitation facilities, and disaster preparedness infrastructure across programme areas.



## KEY INFRASTRUCTURE ACHIEVEMENTS

### 16 earthquake-resistant classrooms constructed

» Creating safer and improved learning environments for students.

### 7 Child-, Gender- and Disability-Friendly (CGDF) school toilet facilities built

» Each facility includes 4 cubicles for girls, 4 urinals for boys, and 1 accessible unit for persons with disabilities, ensuring inclusive sanitation services.

### 7 community drinking water supply systems completed

» Providing basic water services to 165 households in Sindhuli and Udayapur districts.

### 21 child-friendly water taps installed

» Improving safe and accessible water supply for children and communities in Sindhuli district.

### WASH facilities repaired in 14 schools

» Including school toilets and handwashing stations to improve hygiene conditions for students.

### 12 classrooms repaired and rehabilitated

» Enhancing the safety and usability of existing school infrastructure.

### 4 small-scale disaster mitigation measures implemented

» Supporting communities to address potential disaster risks.

### Emergency infrastructure support during disasters

- 8 temporary shelters constructed
- 6 emergency toilets installed
- 9 water tanks installed
- 20 handpumps constructed

These emergency facilities supported communities affected by drought, floods, and landslides, ensuring access to basic services during crises.

## PROGRAMME ACCOUNTABILITY



» WVI Nepal remains committed to transparency, community participation, and strong accountability mechanisms. Since 2017, the organization has implemented a technology-driven feedback system to strengthen community engagement and improve programme quality.

In addition, 322 feedback entries were received specifically related to humanitarian response programmes, helping strengthen response effectiveness and community trust.

"Our community in Ward No. 8 faces annual flood risks due to its proximity to the Bagmati River. This year the riverbank dam broke, damaging many homes and properties. During this crisis, RDC and World Vision International Nepal provided food assistance and non-food item kits. We are grateful for their timely support."

-Community Member, Rautahat

## COMMUNITY FEEDBACK OVERVIEW

Total Feedback Received:

**28,293**



Feedback from Children  
**29% (8,247)**



Feedback from Adults  
**71% (20,046)**

Type of Feedback



Individual feedback  
**91%**



Group feedback  
**9%**

Response Rate

**99.37%**

## ADVOCACY AND CAMPAIGN

➤ WVI Nepal collaborates with Government, civil society organizations, and development partners to promote child-focused policies and strengthen children's participation in national and local dialogue processes.

These engagements create opportunities for children, communities, and stakeholders to discuss priorities and strengthen actions that support child well-being.

In FY25, continued engagement with government and partners contributed to the endorsement of 36 child-related policies and guidelines across federal, provincial, and local levels.



## KEY HIGHLIGHTS



**36 child-related policies and guidelines endorsed** across federal, provincial, and local governments.



**National Assembly of Child Human Rights Defenders** held in Kathmandu, bringing together children from across provinces to discuss issues such as child marriage and child rights.



**Children and Youth Dialogue on Climate Change** organized with partners, where children from different districts shared recommendations on climate challenges affecting them.



**National Civil Society Conference on Children's Civic Space and Rights** Kathmandu, bringing together civil society organizations, academics, and stakeholders.



**Collaborated with Joining Forces Network to support**

- Child-Led Universal Periodic Review (UPR): children contributed to national validation workshops and the children's report submitted to the Office of the UN High Commissioner for Human Rights.

- Safer Internet Day 2025 webinar engaged over 1,000 participants, including government agencies, civil society organizations, and youth.



**Child Protection Information Management System (CPIMS) training** provided to 62 government officials and protection stakeholders in collaboration with National Child Rights Council (NCRC)



**11 child friendly local governance (CFLG)** wards declared in WVI Nepal's working areas through the collaboration between WVI Nepal and local Government



**72 interfaith dialogues** conducted to address harmful social norms.



**58 GBV cases addressed**



**68 dowry-free marriages promoted**



**1,060 children enrolled in school** through interfaith engagement.



## ENOUGH CAMPAIGN

» World Vision International Nepal continued implementing the global ENOUGH Campaign, which aims to address child hunger and malnutrition through community dialogue, partnerships, and engagement with stakeholders at different levels.



## KEY HIGHLIGHTS



**Community, provincial, and national nutrition dialogues** were conducted between September and December, bringing together children, parents, community leaders, and policymakers to discuss challenges affecting child nutrition.



**3 nutrition friendly local governance (NFLG)** wards declared in WVI Nepal's working areas through the collaboration between WVI Nepal and local Government.



Discussions highlighted issues such as **limited awareness of nutritious diets, the availability of junk food in schools and communities, harmful traditional practices, and limited time for preparing nutritious meals.**



A child representative from Nepal participated in the **Nutrition for Growth (N4G) Summit in Paris (27–28 March 2025)** and shared children's perspectives on nutrition and food systems.



**National Consultative Workshop on the Local Production-Based Nutritious School Meal Framework (2081 BS)** was organized with government and partners to discuss the role of school meals in improving children's nutrition and learning outcomes.



**Municipal-level nutrition dialogues** were organized in Ekdara Rural Municipality, Samsi Rural Municipality, and Guruda Municipality, bringing together local leaders and stakeholders to discuss nutrition priorities and practices.

## CHILD SPONSORSHIP

» In FY25, Child Sponsorship connected 77,184 Registered Children (RCs) across 17 districts in Nepal with sponsors from 11 countries. Through integrated interventions in Education, Health, Child Protection, and Livelihoods, the programme reached 448,342 individuals, strengthening opportunities for children, families, and communities to thrive. The programme also continued to enhance sponsor–child engagement through 99,223 sponsor-child correspondences ensuring meaningful communication and stronger relationships between children and sponsors.

As part of the short-term community-led initiatives called micro projects targeted to support the registered children were supported. These small-scale, practical projects are designed to help local groups address their own priority needs, improve children's well-being, and strengthen the capacity of community members to sustain actions on their own.

These projects directly benefited 19,455 individuals, of whom 13,969 (71.8% were children and 5,496 (28.2%) were adults.



## INNOVATION

» WVI Nepal continues to test and scale innovative solutions that improve child well-being and strengthen community resilience. Through the **Nepal Innovation Lab (NLab)**, the organization collaborates with partners and the global World Vision innovation network to develop practical tools that support learning, nutrition awareness, environmental sustainability, and improved learning environments.



## KEY INNOVATION INITIATIVES IN FY25



**Poshan Sangraha Board Game developed**  
**5000** games distributed, promoting healthy food choices among children



**3,000** kg plastic recycled and converted into classroom insulation materials



**52** children trained on Media and Storytelling training as part of Sponsorship Innovation Challenge



**2000** Adolescent Health Flipcharts supported adolescent health awareness



**28** classrooms insulated in 7 schools in Kailali district, improving learning environments and resulting in up to a 10°C reduction in classroom temperatures during summer months, creating more comfortable learning spaces



## GRANT PROJECTS

World Vision International Nepal implements a number of grant-funded initiatives that complement its Area Programme interventions and address specific development challenges affecting vulnerable children and communities. These projects strengthen local systems, expand programme reach, and test innovative approaches that can later be scaled across broader programmes.

In FY25, grant-funded projects focused on strengthening inclusive education systems, disaster resilience, and community capacity through collaboration with local governments, schools, and community-based institutions. Two key initiatives-Sikai+ and Community-Based Disaster Risk Reduction (CBDRR)-demonstrated measurable impact in improving children's learning environments and strengthening community preparedness to protect children during emergencies respectively.



## SIKAI+: STRENGTHENING INCLUSIVE LEARNING IN MADHESH

### Project Overview

➤ The Sikai+ project aims to ensure that the most vulnerable children in Madhesh Province access and participate equally in quality education. The project focuses on improving inclusive school environments, strengthening governance systems, and empowering families—particularly women—to support children's education.

Implemented across six municipalities in Rautahat and Sarlahi districts, Sikai+ supports schools and communities to create child-friendly learning environments that enable children—especially those from marginalized groups and children with disabilities—to succeed academically.







## KEY ACHIEVEMENTS

### Teachers trained in inclusive pedagogy

**362** teachers

Men	Women
	
<b>117</b>	<b>245</b>

### ECED and early grade teachers trained

**281** early grade and  
**81** ECED teachers

### Children participating in early screening

**19,889** children

### Schools applying inclusive teaching methods

**4** schools

### Classrooms equipped with child-friendly learning materials

**95** classrooms across  
**43** schools

### Savings mobilised by women's groups

NPR **314,910**

### 15 Saving for Education (S4E) groups with



**340** women members formed

### Women's Saving for Education groups formed

**15** groups (**340** members)

### Teachers trained in Universal Design for Learning (UDL)

**80** teachers

Men	Women
	
<b>40</b>	<b>40</b>

### Children receiving financial literacy orientation

**494** children

### Participants trained on early disability screening

**105** teachers and  
SATC members

These achievements strengthened teachers' capacity to implement inclusive teaching practices and improved the learning environment for thousands of children in Madhesh Province.

## Impact on Children and Schools

Through teacher training, improved classroom environments, and community engagement, Sikai+ has contributed to more inclusive and supportive learning spaces. Teachers now apply child-friendly teaching methods and develop learning materials using locally available resources, making classrooms more engaging and accessible for children with diverse learning needs.

Early screening activities have also enabled schools and communities to identify children who may require additional learning or health support, ensuring that children with disabilities are better supported within the education system.

Women's Saving for Education (S4E) groups have further strengthened household support for children's education by promoting financial literacy and encouraging families to invest in their children's schooling.

As one teacher from Baudhimai Basic School in Rautahat noted:

"After the training, teachers began preparing daily schedules regularly and using child-friendly learning materials. Students who require extra support are now given additional time and group learning opportunities." Student regularity has significantly increased from 50% to 93%" says head teachers of Shree Basic School, Shivanagar, Garuda,"



## COMMUNITY-BASED DISASTER RISK REDUCTION (CBDRR)

### Project Overview

► The Community-Based Disaster Risk Reduction (CBDRR) project strengthens the resilience of disaster-prone communities in Achham and Kailali districts. The initiative focuses on improving preparedness, reducing disaster risks, and strengthening community capacities to respond effectively to hazards such as floods and landslides.

The project integrates disaster risk reduction with climate-smart livelihoods and community savings mechanisms to ensure that families are better prepared to protect children during emergencies.



## KEY ACHIEVEMENTS

### School-level DRR orientations conducted

5 schools in Achham

### Children reached through DRR awareness sessions

240 children

### Students and teachers trained in disaster preparedness

252 participants

### Participants in inter-school extracurricular activities related DRR management

586 students

14 events;

Men



350

Women



236

### Local Emergency Operations Centre (LEOCs) constructed

2

### Climate Field Schools established

20 schools

### Community members trained in climate-smart agriculture

500 people

### Members engaged in Savings for Transformation groups

448 members

### Children benefiting from improved household resilience

118 children

### Multipurpose safe shelter constructed

1 shelter in flood-prone community

### Community flood mitigation works implemented

Reduced risk for 200 residents

These interventions strengthened disaster awareness among children and improved the resilience of households and communities in vulnerable areas.



### Impact on Communities and Children

» The CBDRR project has strengthened both community preparedness and household resilience, enabling communities to better protect children from disaster risks.

Children participating in school-based disaster awareness activities gained knowledge on hazard mapping, early warning systems, and preparedness measures. This has enabled them to act as agents of change, sharing safety information with their families and communities.

At the same time, climate-smart agriculture training and savings groups have strengthened the economic resilience of households, helping families better cope with climate-related shocks while safeguarding children’s education and wellbeing.

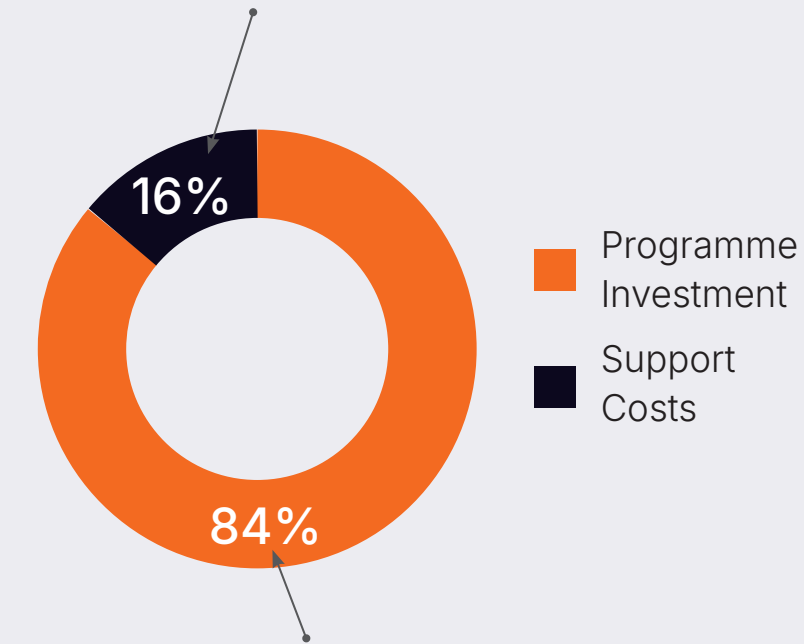
Multi-purpose safe shelters were constructed in Tikapur and Janaki Municipality of Kailali District and Panchadewal Binayak of Achham district. These shelters can be used for community programs during normal time and serve as a disaster resilient hub during emergency providing immediate shelter to people affected/displaced by disasters. Infrastructure investments such as multipurpose safe shelters and flood mitigation work (community specific hazard/ risk map display, installation of flood markers, Siren and equipment support to LDMC/ CDMC) have also reduced disaster risks and created safer spaces for communities during emergencies.



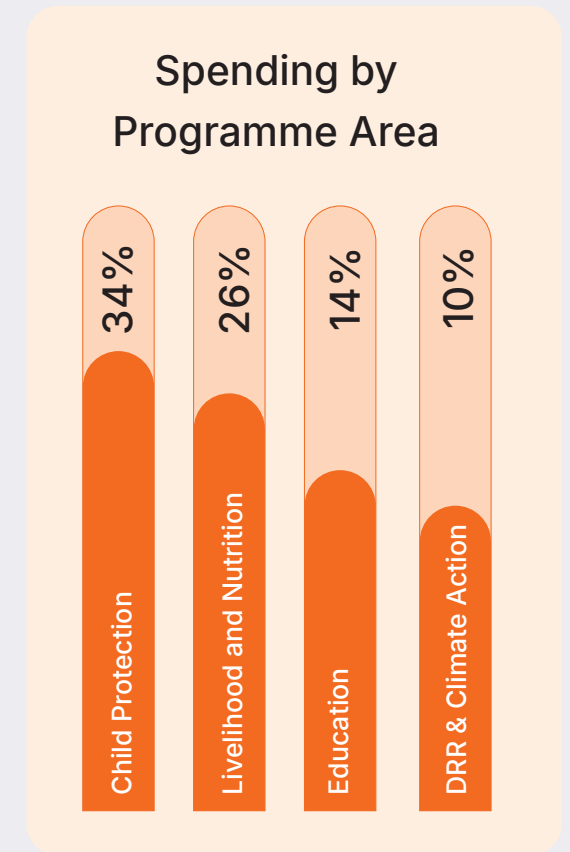
## BUDGET & SUPPORT

- Financial Stewardship (USD 13.145 Million)

USD 2.1M for technical oversight and administrative excellence.



USD 11.1M directly spent on community development interventions.



## OUR IMPLEMENTING PARTNERS

As part of World Vision Nepal's commitment to advancing localisation, a targeted capacity-strengthening initiative was implemented to empower 27 Partner NGOs and 7 other collaborating organisations across the country. Grounded in findings from the 2024 Comprehensive Organizational Capacity Assessment (COCA), the program addressed critical gaps in governance, policy development, safeguarding, communication, and financial sustainability, key pillars for strengthening locally led development.

As a result, partners are now positioned as credible, sustainable, and independent development actors, strengthening local ownership, improving accountability to communities, and contributing to more resilient and effective systems for long-term impact.

### List of WVI Nepal's Partner Organisations in FY 2025 (October 2024 to September 2025)

Sn	Name of Partner Organisation	District	Project/ Programme Name
1	Association for Social Transformation and Humanitarian Assistance (ASTHA) Nepal	Achham	PCESP <sup>1</sup>
2	Bagmati Welfare Society Nepal (BWSN)	Sarlahi	PCESP
3	Centre for Equal Access Development (CEAD)	Doti	PCESP
4	Child Development Society (CDS)	Kathmandu	PCESP, BRICKK
5	Community Development Centre (CDC)	Doti	PCESP, SAFE
6	Conscious Society for Social Development (CSSD)	Kailali	CBDRR <sup>2</sup>
7	Dalit Help Society (DHS)	Bajhang	NRL, WNER
8	Dalit Society Welfare Community Nepal (DSWCN)	Mahottari	PCESP
9	Digo Bikas Samaj (DBS)	Kailali	NRL <sup>3</sup> , PIPER <sup>4</sup>

1 Protection and Community Engagement and Sponsorship Project

2 Community-Based Disaster Risk Reduction

3 Nutrition and Resilient Livelihoods

4 Plastic Insulation Polyfloss for Economic Roofing

Sn	Name of Partner Organisation	District	Project/ Programme Name
10	Good Neighbours Nepal (GNN)	Kathmandu	NRL
11	Human Rights and Environment Development Centre (HURENDEC)	Udayapur	NRL
12	Integrated Rural Development Society (IRDS)	Mahottari	NRL
13	Jalpa Integrated Development Society (JIDS)	Udayapur	PCESP
14	Karnali Integrated Rural Development and Research Center (KIRDARC)	Jumla	PCESP, RISE <sup>5</sup> II
15	Nepal National Social Welfare Association (NNSWA)	Kanchanpur	PCESP, IQE, B4G <sup>6</sup>
16	Panchatara Yuwa Samrakshak Manch (PTYSM)	Jajarkot	PCESP, IQE, WNER
17	Pragatishil Yuwa Samaj (PYS)	Bajhang	PCESP, IQE, TELOS <sup>7</sup> , PRAISE <sup>8</sup>
18	Rastriya Rojgar Parbardan Kendra (RRPK)	Sarlahi	NRL, Ujyalo Sarlahi, SIKAI
19	Relief Nepal	Sindhuli	PCESP
20	Rural Community Development Centre (RCDC)	Lamjung	PCESP, NRL
21	Rural Development Centre (RDC) Nepal	Rautahat	NRL
22	Rural Women's Development and Unity Centre	Kathmandu	AATSE <sup>9</sup>
23	Sindhuli Integrated Development Service (SIDS)	Sindhuli	NRL
24	SOSEC Nepal	Dailekh	PCESP, IQE
25	Welfare Association for Children Tikapur	Kailali	PCESP
26	Working for Access and Creation (WAC) Nepal	Achham	NRL, CBDRR, SEWA <sup>10</sup>
27	Youth Alliance for Development (YARD)	Kailali	IQE

5 Raising Income through Small Enterprise and Employment

6 Basic for Girls

7 Technology Embedded Learning Opportunity for Students

8 Promoting Resilience in School Education

9 Amplifying Advocacy through Strategic Engagement

10 Strengthened Health & WASH facilities and its Accessibility

## List of collaborating organisation who joined with WVI Nepal for Advocacy Events, Technical Assistance, Emergency Response and Programme Assessment in FY 2025

Sn	Name of Collaborating Organisation	District	Project/ Programme Name
1	Association of Community Radio Broadcasters Nepal	Kathmandu	Media campaign
2	Jagriti Child and Youth Concern (JCYCN) Nepal/ National Child Friendly Local Governance	Kathmandu	CFLG
3	EduTech Nepal	Bajhang	TELOS
4	National Inter-Religious Network (NIRN)-Nepal	Kathmandu	MORAL Values, EWV <sup>11</sup> , COH CP <sup>12</sup>
5	NGO Federation Nepal	Kathmandu	SDG Localisation
6	PRERANA	Lalitpur	Sikai+
7	Social Development Forum (SDF)	Banke	PCESP

<sup>11</sup> Empowered World View

<sup>12</sup> Channel of Hope for Child Protection

## ACRONYMS

<b>AATSE</b>	Amplifying Advocacy through Strategic Engagement	<b>NFI</b>	Non-Food Item
<b>AIN</b>	Association of International NGOs in Nepal	<b>NFLG</b>	Nutrition Friendly Local Governance
<b>B4G</b>	Basic for Girls	<b>NGO</b>	Non-Governmental Organisation
<b>BRICKK</b>	Building Resilience in Children of Kathmandu's Brick Kilns	<b>NLab</b>	Nepal Innovation Lab
<b>CBDRR</b>	Community-Based Disaster Risk Reduction	<b>NRL</b>	Nutrition and Resilient Livelihoods
<b>CDMC</b>	Community Disaster Management Committee	<b>PCESP</b>	Protection and Community Engagement and Sponsorship Project
<b>CEFM</b>	Child, Early and Forced Marriage	<b>PD</b>	Positive Deviance
<b>CFLG</b>	Child Friendly Local Governance	<b>PDH+</b>	Positive Deviance Hearth Plus
<b>CPIMS</b>	Child Protection Information Management System	<b>PRAISE</b>	Promoting Resilience in School Education
<b>CSO</b>	Civil Society Organisation	<b>PTA</b>	Parent-Teacher Association
<b>CSS</b>	Comprehensive School Safety	<b>PwD</b>	People with Disabilities
<b>CUP</b>	Catch-Up Programme	<b>RC</b>	Registered Children
<b>CVA</b>	Citizen Voice and Action	<b>RISE</b>	Raising Income through Small Enterprise and Employment
<b>DFAT</b>	Department of Foreign Affairs and Trade	<b>SATC</b>	Student Assessment Technical Committee
<b>DRM</b>	Disaster Risk Management	<b>SDG</b>	Sustainable Development Goal
<b>DRR</b>	Disaster Risk Reduction	<b>SESP</b>	School Education Sector Plan
<b>ECED</b>	Early Childhood Education and Development	<b>SEWA</b>	Strengthened Health and WASH Facilities and Accessibility
<b>FCDO</b>	Foreign, Commonwealth and Development Office	<b>SIP</b>	School Improvement Plan
<b>FY</b>	Fiscal Year	<b>SMC</b>	School Management Committee
<b>GBV</b>	Gender-Based Violence	<b>S4T</b>	Savings for Transformation
<b>GEDSI</b>	Gender Equality, Disability and Social Inclusion	<b>TELOS</b>	Technology Embedded Learning Opportunity for Students
<b>HH</b>	Household	<b>UL</b>	Unlock Literacy
<b>IQE</b>	Inclusive and Quality Education	<b>UN</b>	United Nations
<b>LCRC</b>	Local Child Rights Committee	<b>UNCRC</b>	United Nations Convention on the Rights of the Child
<b>LDMC</b>	Local Disaster Management Committee	<b>UPR</b>	Universal Periodic Review
<b>LEOC</b>	Local Emergency Operations Centre	<b>WASH</b>	Water, Sanitation and Hygiene
<b>LR</b>	Learning Roots	<b>WDMC</b>	Ward Disaster Management Committee
<b>MoFA</b>	Ministry of Foreign Affairs	<b>WNER</b>	West Nepal Earthquake Response
<b>MoFAGA</b>	Ministry of Federal Affairs and General Administration	<b>WVI</b>	World Vision International
<b>MVC</b>	Most Vulnerable Children		
<b>NCRC</b>	National Child Rights Council		

Scan here for socials



## WORLD VISION INTERNATIONAL NEPAL

### National Office

Lalitpur-13, Nepal

GPO Box 21969, Kathmandu Nepal

Phone No: +977-1-5970877

Email: info\_nepal@wvi.org

### EAST FIELD OFFICE

House number 415, Bardibas Municipality-01

Mahottari, Nepal

Phone: +977-44-550520

### WEST FIELD OFFICE

Hasanpur, Dhangadhi Sub-Metropolitan City-5

Kailali, Nepal

Phone: +977-91-524032

### For Feedback:

Toll-Free Number: 1660-01-00014

Ncell Number: 9801571014

Email: npl\_feedback@wvi.org