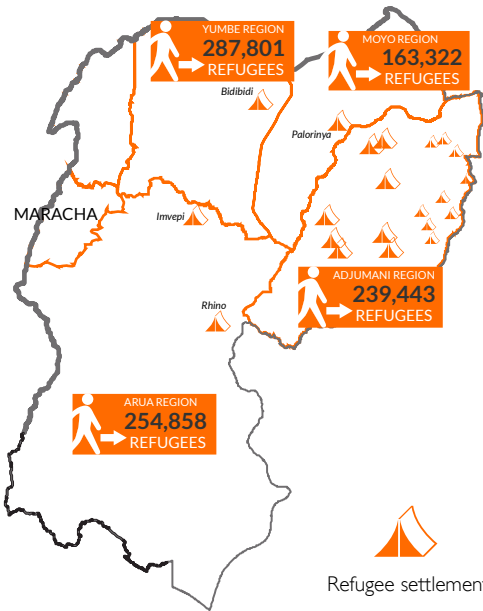


Key messages

- Refugees profile:** Uganda is currently hosting 1.45 million refugees and is receiving simultaneous emergency influxes from South Sudan, DRC and Burundi. 62% of the refugee population in West Nile are children.
- South Sudanese refugees:** In August, Uganda received 668 new arrivals from South Sudan compared to 2,998 refugees received in May. New arrivals say that they are crossing to Uganda to access health care services and education for their children because service delivery in South Sudan has collapsed.
- Transition from relief to self-reliance:** Although a majority of the refugees rely on food assistance, over time the number of refugees engaging in small scale businesses has been growing, and as such there is a gradual transition from in-kind assistance for food and livelihoods, to an approach that emphasizes partnerships with local businesses, reduction of subsidies and demand-driven, market-based, livelihoods support.
- Refugees from the DR Congo:** Violence and civil unrest in the Democratic Republic of Congo has led to massive influx of Congolese refugees into Uganda with a total of 84,369 new arrivals reported between January and June 2018 (averaging 7,000 monthly).
- Long-term recovery plans:** World Vision's long-term recovery programmes is to empower refugees and host communities to be self-reliant, mainly through income generating activities that will boost their incomes.

Number of refugees in Uganda

Source: UNHCR, Regional Refugee Response Plan, January - December 2018



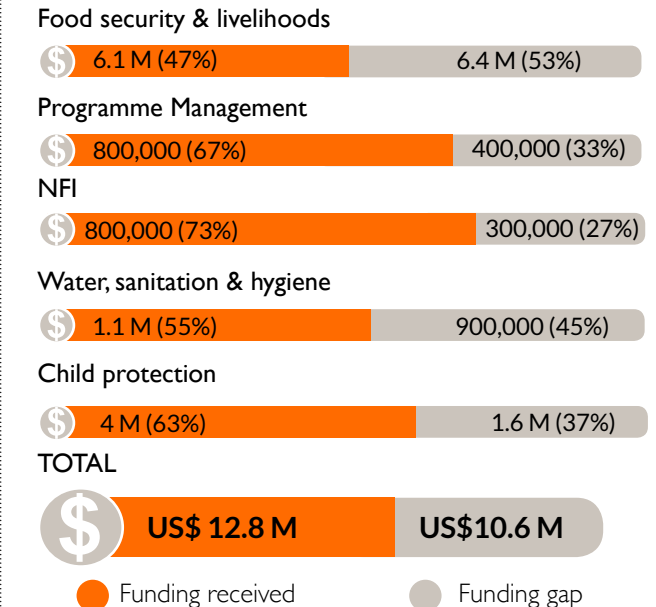
Gaps and Needs

- Children at risk:** World Vision is actively involved in case management for vulnerable refugee children, including the more than 2000 children who have arrived in Uganda unaccompanied or separated from their families. However, current resources are inadequate to meet the minimum standards in case management and arranging foster care.
- Conflict disrupting education:** Children who missed their opportunity to acquire basic education do not have suitable alternative options for continuing with education, which creates the need for Accelerated Learning Programmes (ALPs).

Humanitarian needs



Funding needs



*All financial figures in US\$

Response highlights



WATER, SANITATION & HYGIENE

Conducted hygiene and sanitation awareness and training for 2,889 for children and school management structures. At all the Child Friendly Spaces and Reception centres, World Vision staff continues to provide hygiene and sanitation messages to the users of the facilities.



NON FOOD ITEMS (NFIs)

The total population served was 10,936 households. World Vision in partnership with UNHCR, continues to distribute core relief items to all South Sudanese new arrivals in Omugo as well as the mandatory soap and sanitary kit in Bidibidi and Imvepi from South Sudan. Items distributed include Household Kit (kitchen sets, Blankets, soap, plastic basin, Jerri cans, sleeping mat, mosquito nets, and solar light), Shelter kit (Panga, Hoes, Sickle, Rope, Plastic sheet, poles) and sanitary kit (Soap, Sanitary pads and underwear) based on standard household distribution scale.



CHILD PROTECTION

75,027 children were reached through child protection interventions, these include Child Friendly Spaces, Early Childhood Development, peace building, case management, ending child marriage project activities and strengthening community child protection systems. 54,367 (30,418 boys: 23,949 girls) children are enrolled for psychosocial support throughout the 42 child friendly spaces with a daily average attendee of 33,551 (17,294 boys: 16,257 girls)



RECEPTION CENTRE MANAGEMENT

The reception centres received a total of 668 individuals were received at the reception centre. Among the new arrivals, 106 are people with special needs. World Vision in partnership with UNHCR and Office of the Prime Minister continues to manage the refugee reception centres in Bidibidi, Ariwa (in Yumbe), Imvepi and Omugo (in Arua district). Under the reception center in Imvepi and Omugo, World Vision provides hot meals to new arrivals, overnight shelter facilities, hygiene and sanitation facilities, and temporal foster care for unaccompanied children plus referral of cases to various partners.



RESILIENCE AND LIVELIHOODS

During August, the program reached 17,060 people with interventions supporting improved farming and cash based interventions. (32% host, 68% refugee households) in West Nile and 38,998 refugees with cash based transfers in South West.



FOOD ASSISTANCE

WEST NILE

A total of 4,969 metric tons of food was distributed to 269,203 people in Arua and Yumbe refugee settlements. The food assistance team conducted the first cycle of food distribution from mid-July to mid-August 2018.

SOUTH WEST

A total of 1,569 metric tons of food was distributed to 93,966 people in Kyaka and Kyangwali refugee settlements.

Response achievements

Reporting period August 01 - August 31, 2018



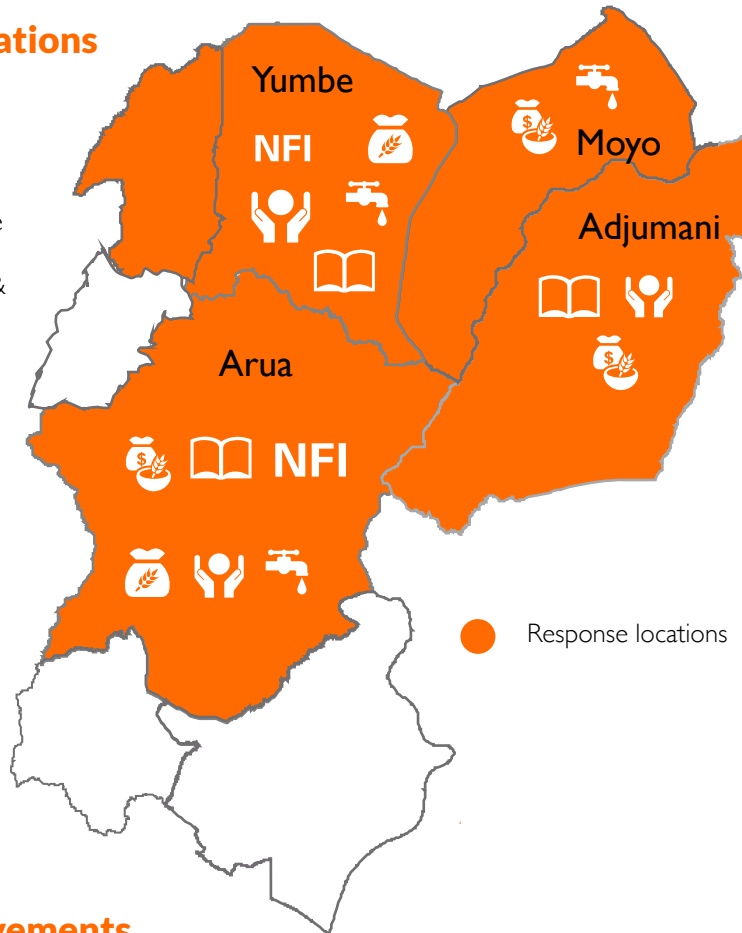
UGANDA

REFUGEE RESPONSE SITUATION REPORT | AUGUST 1 - AUGUST 31 2018

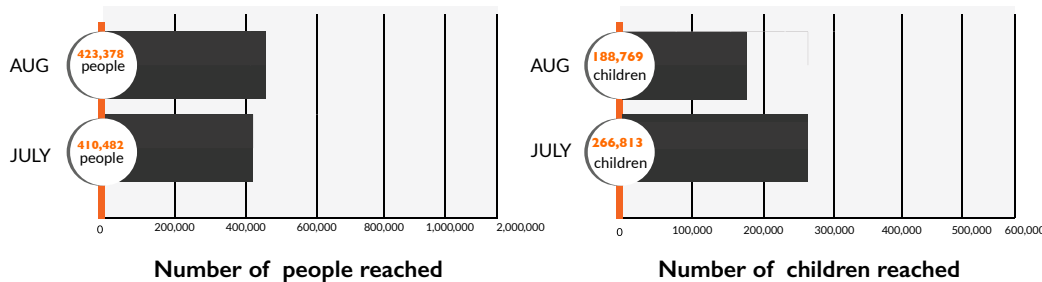


Response locations

- Education
- Food assistance
- Food security & livelihoods
- Protection
- WASH
- Health & nutrition



Monthly achievements



Primary contact information

Jason Evans
National Director,
World Vision Uganda
jason_evans@wvi.org

Jennifer Neelsen
Response Director
World Vision Uganda
jennifer_neelsen@wvi.org

Derrick Kyatuka
Communications Officer
World Vision Uganda
derrick_kyatuka@wvi.org

Moses Odur
HEA Manager
World Vision Uganda
moses_ongom@wvi.org

National office donors & partners



With donations from private individuals in US, Korea, Australia, Hong Kong, Canada, UK, New Zealand, Taiwan, Japan and Uganda.

The boundaries and names shown and the designations used on these maps do not imply official endorsement or acceptance by the World Vision International

Creation date: 10 Sept 2018

Sources: FEWS-NET, UNICEF, UNOCHA, WHO, World Vision, UNHCR, Office of the Prime Minister, Uganda government