

Urban Programmes

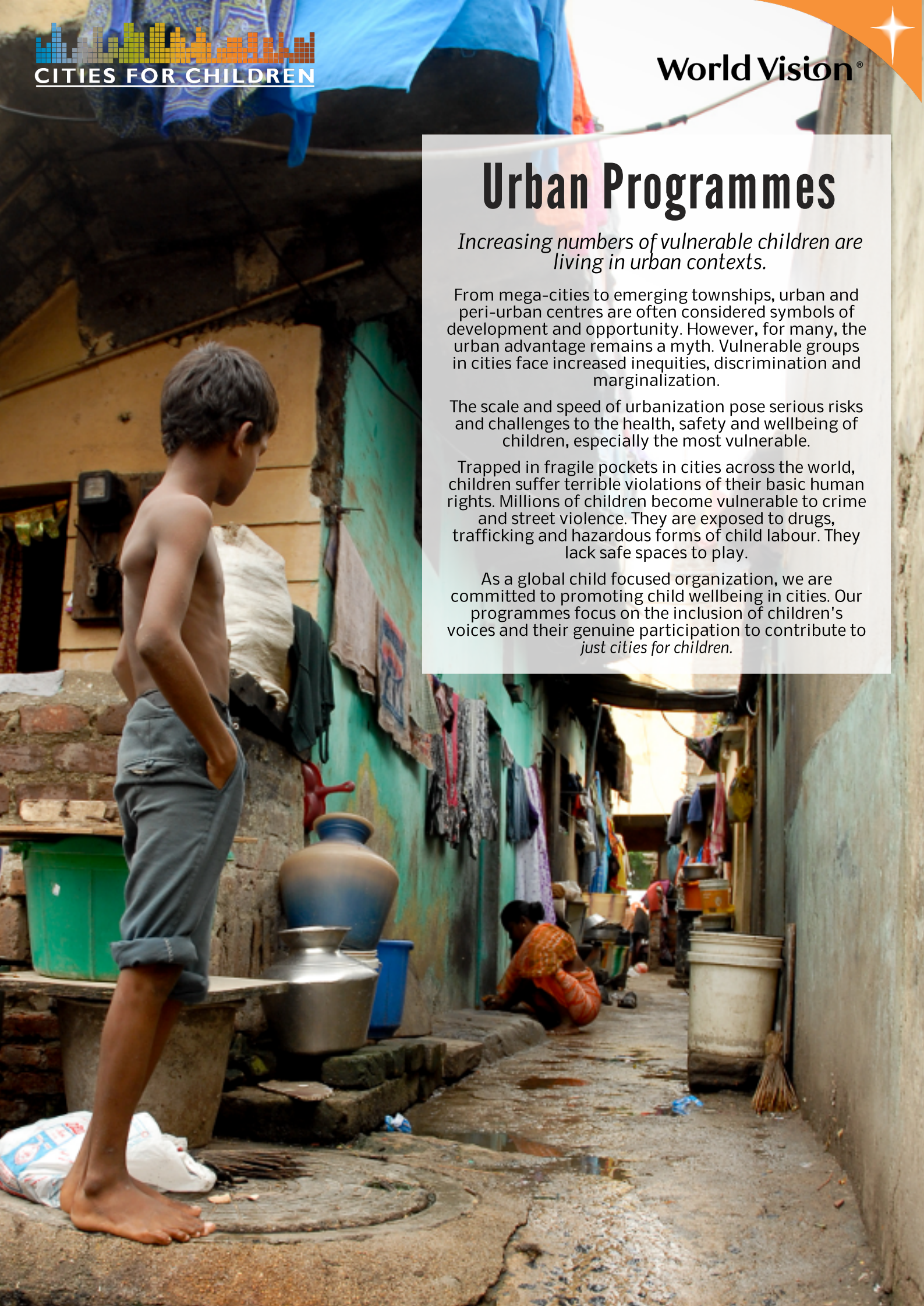
Increasing numbers of vulnerable children are living in urban contexts.

From mega-cities to emerging townships, urban and peri-urban centres are often considered symbols of development and opportunity. However, for many, the urban advantage remains a myth. Vulnerable groups in cities face increased inequities, discrimination and marginalization.

The scale and speed of urbanization pose serious risks and challenges to the health, safety and wellbeing of children, especially the most vulnerable.

Trapped in fragile pockets in cities across the world, children suffer terrible violations of their basic human rights. Millions of children become vulnerable to crime and street violence. They are exposed to drugs, trafficking and hazardous forms of child labour. They lack safe spaces to play.

As a global child focused organization, we are committed to promoting child wellbeing in cities. Our programmes focus on the inclusion of children's voices and their genuine participation to contribute to *just cities for children*.



TEAM VISION

World Vision is a leading global partner addressing child wellbeing in urban contexts by contributing to safe, sustainable and just cities for children – especially the most vulnerable.

WHAT WE DO

- Provide leadership and strategic direction to World Vision's urban initiatives.
- Develop urban programming approaches and scalable solutions with partners.
- Promote innovative and promising practices in urban contexts as a learning hub.
- Advocate for justice and equity for the most vulnerable children.
- Seek partnerships to collaborate, strengthen and scale up urban programs, including academic partners for joint research and learning.
- Contribute to global discourse and dialogue that shape urban policy and the implementation of the New Urban Agenda.



OUR URBAN EVIDENCE BASE

In 2008, recognizing an organizational need to respond and adapt to the growing trend of urbanization, and its negative impact on the most vulnerable groups, especially children, World Vision launched an action-research and learning approach to investigate the relevance of its current development models and frameworks in urban settings.

The lessons from this first phase of action research are informing effective and innovative ways to tell the complex story regarding World Vision's impact in dense and diverse informal settlements and slums. City strategies are recommended to ensure World Vision's investment in programming and policy leads to sustainable change for marginalized urban communities. World Vision proposes "*Just Cities for Children*" that are healthy, safe, resilient and prosperous where children thrive.

The learnings from this first phase is documented in the report '*Making Sense of the City: Developing evidence through action research and learning*' available on our website.

CITIES FOR CHILDREN

'Cities for Children' is World Vision's emerging framework for addressing children's vulnerabilities in urban contexts. It is anchored in World Vision's child wellbeing aspirations and links with tested urban approaches developed by various UN agencies.

The Framework consists of four inter-related domains of change affecting child wellbeing in cities: **health, safety, resilience and prosperity**. Underpinning these domains is the enabling factor of advocacy to seek justice and inclusion of the most vulnerable through policy change.

The Framework identifies critical strategic pillars and enablers of change common to all domains that are essential for sustainable development in urban settings.

Strategic pillars: Social Cohesion, Urban Governance, Knowledge Building, and Built Environment.

Enablers of Change: Partnerships, Technology, Urban Planning and Design, and Urban Policy

THE CITYWIDE SELF-SUSTAINING MODEL

The 'Citywide Self-Sustaining Model' is an integrated approach to urban programming that aims to maximize World Vision's contribution to large scale, sustained impact in the lives of the most vulnerable children in urban areas.

The model leverages World Vision's global branding and local presence, with emphasis on scaling with and through partners, building coalitions for effective action, and influencing policy development and implementation.

It proposes exponential growth with and through partners, generating sustainable social impact in cities, focusing on inclusion of the most vulnerable, especially children.

The intended outcomes of the model include:

- Identification and inclusion of the most vulnerable children and groups.
- Build coalitions and partnerships for citywide scale, effectiveness and impact.
- Contribution to global and national discourse and dialogue that shape urban policy.



World Vision's Cities for Children Framework

OUR GROWING URBAN FOOTPRINT

ABOUT US

World Vision is a Christian relief, development and advocacy organisation dedicated to working with children, families and communities worldwide to reach their full potential by tackling the causes of poverty and injustice.

World Vision is dedicated to working with the world's most vulnerable people. We serve all people regardless of religion, race, ethnicity or gender.

With over 40,000 staff working across 90 countries, World Vision is already present in the world's most rapidly urbanising countries and regions.

World Vision co-leads the children and youth stakeholder group to implement the *New Urban Agenda*, adopted at the United Nations Habitat III Conference.

World Vision is a standing committee member and lead partner for UN-Habitat's World Urban Campaign.

World Vision is a global advisor to the UN Global Compact - Cities Programme.

**World Vision International
Global Urban Programmes**

Website

<http://www.wvi.org/urban>

Email

urban_programming@wvi.org



India's Safer Cities Initiative



Social cohesion building in Lebanon



Indonesia's Child Friendly City



Healthy Cities for Children in Bangladesh



Youth skills and livelihoods in Honduras



Youth and urban governance in Bolivia