



SOUTH SUDAN

East Africa Hunger Crisis Emergency Response

Mid-2017 Appeal

KEY MESSAGES

- **Deteriorating security situation:** All stakeholders should expect the situation to become more difficult and more complex in the near to medium term, and should plan accordingly.
- **Deteriorating food security:** The situation has further deteriorated due to armed conflict, economic crisis and below-average harvests, that families exhausted well before the ongoing lean season.
- An estimated 6 million (50% of the population) people were severely food insecure in July 2017, compared to 5.5 million (45% of the population) people in May 2017. This is the greatest number of people ever to experience severe food insecurity (IPC Phases 3, 4 and 5) in South Sudan.
- **Worsening economic situation:** Urban populations are particularly impacted by dramatic increases in market food prices. Compounded with the July 2016 conflict in Juba, the economic deterioration has resulted in close to 70% of Juba's population requiring food assistance.
- **Cholera outbreak:** Cumulatively, more than 5,000 cases have been reported since the beginning of this year¹, confirmed in 19 counties in South Sudan. The most affected counties are located along the river Nile.
- The 2017 Humanitarian Response Plan (HRP) is asking for USD \$1.6 billion to reach the 5.4 million individuals considered the most vulnerable to the current humanitarian crisis. However, only 52.6 per cent of the HRP is actually funded.²
- **Access:** Access to affected populations is still very challenging due to a number of reasons, including a continuation of armed conflict, general insecurity, weather and poor transportation networks in South Sudan.
- Rapid Response Mechanism (RRM) for food assistance and non-food items (NFI) distributions of which World Vision is a lead implementing agency in South Sudan remains an effective means to reach the deep field/remote locations, however, its dependence on the World Food Programme (WFP) air assets is a constraint.

¹UNICEF South Sudan, Cholera Situation Report, June 2017

²Financial Tracking Service, South Sudan, 2017

THE CRISIS IN A NUTSHELL



6 million

people face starvation and elevated risk of famine if humanitarian assistance will not arrive on time



1.2 million

children are acutely malnourished with over 270,664 affected by severe malnutrition



5.4 million

people require healthcare support



5.1 million

people require water and sanitation assistance



3.9 million

people have been displaced because of drought and conflict



7 million

in need of protection from gender-based violence, child abuse and potential trafficking



1.17 million

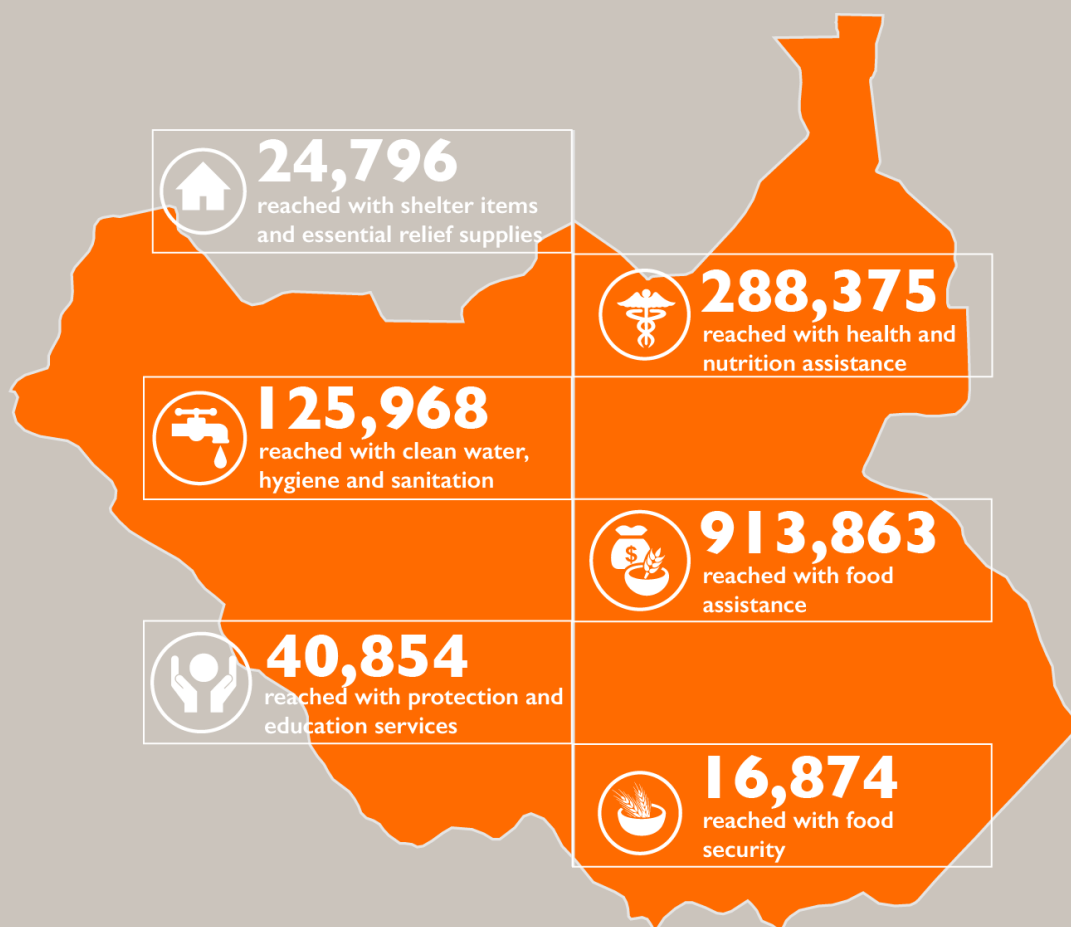
school age children are out of school education intervention

RESPONSE ACHIEVEMENTS



1,151,850 individuals reached in South Sudan during the first six months of World Vision's 2017 Hunger Crisis response*

World Vision's response has provided affected communities with:



**some beneficiaries may have received in multiple sectors*



THE NEXT 6 MONTHS

1,300,000

people targeted in South Sudan with planned response programming during the next six months.

PROPOSED INTERVENTIONS AND NEEDS



Food Assistance

1 million targeted

1,051,765 people are targeted as World Vision plans to implement its food assistance programme in Warrap, Upper Nile, Unity, North Bahr Ghazal, Central- and Western Equatoria through a number of programme models that include general food distribution, food for assets, value vouchers and cash transfers.



Nutrition

196,000 targeted

World Vision will reach a targeted 128,605 children and 68,261 pregnant and lactating mothers in Upper Nile, Greater Bahr El Ghazal and in parts of the Greater Equatoria region. World Vision will treat acute malnutrition and enhance nutrition surveillance in the targeted areas.



Water, sanitation and hygiene services

14,000 targeted

14,023 people are targeted as World Vision aims to construct emergency surface water treatment and supply systems and rehabilitate boreholes installed with solar powered pumps for displaced people and host communities. World Vision plans to build latrines and conduct hygiene campaigns.



Protection

10,000 targeted

World Vision will promote community awareness and strengthen child protection mechanisms to ensure the safety of a targeted 10,825 children. World Vision staff and volunteers will continue to identify and report cases of child rights' violations, follow up on these cases and provide support in collaboration with other protection actors.



Health

30,000 targeted

World Vision will focus on delivery of curative and preventive primary health services for a targeted 30,837 mothers and children. Assistance will also include provision of basic medical supplies and interventions to address the causes of maternal, new-born child deaths and diseases. World Vision will also respond to cholera cases.



Food Security and Livelihood Support

191,000 targeted

World Vision will continue to support food production and livelihood activities through livestock restocking, livestock treatment, farmer trainings and cash transfer programming where markets are functional to a targeted 191,792 people. World Vision will also provide assorted seeds and inputs such as fishing kits. These efforts are aimed at increasing incomes, food availability and provide buffer zones for food within South Sudan.



Shelter and Non-food items

65,000 targeted

World Vision aims to provide timely and appropriate emergency shelter and Non-Food Items (NFI) to a targeted 65,321 Internally Displaced People (IDPs) in spontaneous settlements or within vulnerable host communities as security permits, with a special focus on women and children. The focus will be in the Greater Upper Nile, the Greater Bahr el Ghazal, and the Greater Equatoria with fully functional mobile teams to ensure vulnerable populations in need of NFI/Shelter are reached.



OUR PROMISES

We will ensure the most needy get the help they need

BENEFICIARY SELECTION: The beneficiary selection will be a community-led process with facilitation by project staff in partnership with the local community. In general, the targeting of households will be based on economic, physiological and social vulnerability criteria to include: poor households, households with children under five years who are malnourished, households with pregnant and lactating women, female-headed households, households with orphans, households with disabled bread winners, households supporting the elderly, households whose livelihood assets were completely depleted (such as pastoralists without animals), and socially excluded individuals of households such as those from minority clans. A participatory approach will be adopted in deciding the final criteria to be used and how it is applied.

We will work with partners to make sure as many people are reached as possible

COORDINATION: World Vision South Sudan will continue to actively engage in various coordination, cluster meetings and working groups within South Sudan. Apart from sharing information with other stakeholders, including government ministries, NGOs and UN agencies, these forums ensure World Vision develops joint plans to address issues of critical concern throughout the country.

We will ensure our team acts quickly and effectively

WORLD VISION SOUTH SUDAN CAPACITY: World Vision's operations are well positioned throughout South Sudan maintaining four zonal offices namely Juba, Western Equatoria, Greater Bhar El Gahzal and Greater Upper Nile with static offices and a number of satellite offices and mobile teams providing humanitarian and development assistance across the country. Further, World Vision South Sudan is adequately staffed with highly technical sector advisors, project manager, project officers and a carder of support staff to ensure a smooth operation. World Vision has been in South Sudan since 1989.

GAPS AND FUNDING REQUIREMENTS

World Vision is appealing for US\$ **15,456,242** to fill the gap and meet the funding requirements

Sector	Amount (US\$)	Received (US\$)	Gap (US\$)
Food Security & Livelihoods	18,652,443	6,920,458	11,731,985
WASH	4,926,361	7,767,890	0
Health	1,999,988	2,640,312	0
Nutrition	3,198,958	3,186,565	12,393
Protection	700,000	371,659	328,341
Emergency Shelter & NFI	900,000	333,230	566,770
Education	2,112,000	1,661,688	450,312
Refugees	375,000	0	375,000
Other costs	2,718,988	1,102,547	1,991,441
TOTAL	35,583,738	23,984,349	15,456,242

List of acronyms and abbreviations

DFID	Department for International Development
ECHO	European Civil Protection and Humanitarian Aid Operations
FAO	Food and Agriculture Organization
HRP	Humanitarian Response Plan
IOM	International Organization for Migration
IPC	Integrated Food Security Phase Classification
NFI	Non-Food Items
OFDA	Office of Foreign Disaster Assistance
RRM	Rapid Response Mechanism
UNFPA	United Nations Population Fund
UNHCR	United Nations High Commission for Refugees
UNICEF	United Nations Children's Fund
UNOCHA	United Nations Office for the Coordination of Humanitarian Affairs
USAID FFP	United States Agency for International Development Food for Peace
WASH	Water and Sanitation and Hygiene
WFP	World Food Programme
WHO	World Health Organization

CONTACT INFORMATION

Perry M. Mansfield
National Director
E-mail: perry_mansfield@wvi.org

Lilian Mumbi Kamonjo
Response Director
E-mail: lilian_mumbi@wvi.org

Jacobus Koen
Program Development and
Quality Assurance Director
E-mail: jacobus_koen@wvi.org