

WORLD VISION ETHIOPIA HUNGER RESPONSE SITUATION REPORT NO.15 01-31 JANUARY 2018



SITUATION OVERVIEW



KEY HIGHLIGHTS


- 2018 humanitarian requirements:** Based on preliminary estimates outlined in the 2018 Global Humanitarian Overview, 5 to 7 million people will be in need of humanitarian assistance in Ethiopia throughout 2018. Prolonged drought conditions are severely affecting the livelihoods in most southern and southeastern pastoral and agro-pastoral areas of Southern Nations, Nationalities and Peoples Region, southern Oromia and southeastern Somali Regions, where seasonal rainfall was up to 60 percent below average. In these areas, pasture and water availability have declined to extremely low levels, severely affecting crop production and livestock conditions, leading to large scale animal deaths. Dollo, Korahe, and Jarar zones, along with parts of Afder and Liben in southeastern Ethiopia will be in Emergency (IPC Phase 4), while some households will be in Catastrophe (IPC Phase 5) through May 2018.
- Human disease outbreak:** Prevalent outbreaks of acute watery diarrhoea (AWD) continue to be a public health problem. While a downward trend in all nine regions has been seen having recorded 48,617 cases with 880 deaths in 2017. The majority, 73.6%, of the cases were from Somali region.
- Response ongoing:** World Vision Ethiopia aims to reach 1.77 million people with an USD 37.3 million emergency response plan. The working response plan includes supporting nutrition, water, sanitation and hygiene, health, education and livelihood/food security projects in SNNP, Tigary, Oromiya, Amhara and Somalia regional states.
- Internally Displaced People (IPDs):** New numbers from the IOM's Displacement Tracking



8.5 million
people in need of humanitarian and protection services




5.4 million
children are in need of humanitarian assistance



10.5 million
people in need of water, sanitation and hygiene services




3.6 million
children under-5 projected to be malnourished



1.3 Million+
people displaced due to drought and conflict in 2017



1.9 Million
children require education support



6.2 Million
people require health support

WHAT WORLD VISION IS DOING

Reporting period 01-31 January



WASH

- **Drilling shallow wells:** Three productive shallow wells were drilled at Malle woreda. Installing hand pumps and head works remain before the wells provide the community water.
- **Constructing water supply systems:** Pipelines are being installed to ensure clean water reaches villages in Abaya, Bule Hora, Melka Soda and Soro Burguda woredas. Construction to expand an existing water supply system in Dugda Dawa woreda is expected to begin soon. Meanwhile, in Waldaya Misoma WSP at Melka Soda woreda, construction of a water system is in the final stages.
- **Promoting hygienic behaviour:** A total of 397 community members and 60 health extension workers took part in training sessions to improve hygienic activities in seven communities.
- **Ensuring communities can run water, sanitation and hygiene (WASH) systems:** Nearly 250 people have joined WASH committees and have been trained on operating and maintaining WASH systems in their villages.



FOOD ASSISTANCE

- **Providing children with food assistance:** 12,325 affected Registered Children in World Vision Ethiopia programme areas have been served with food assistance and medical support, thanks to assistance from World Vision Ethiopia, local government, the community, World Food Programme and JEOP.



FOOD SECURITY AND LIVELIHOODS

- **Helping farmers keep their animals healthy:** Thousands of farmers will benefit from the procurement of 150,000 doses of livestock vaccines, drugs and equipment. Distribution will commence soon in Dollo.
- **Supporting agricultural workers:** 50 government staff from the Dollo woreda (district) agriculture office learned to improved agriculture and business skills during a training, knowledge they will share with farmers in their area.



HEALTH & NUTRITION

- **Addressing child malnutrition:** In the reporting period, 232 severely malnourished and 452 moderately malnourished children have been treated in targeted health institutions of South Ari, Kochere, Gedeb, Melka Bello and Habro. The service includes emergency medication and nutrition supplements.



EDUCATION AND PROTECTION

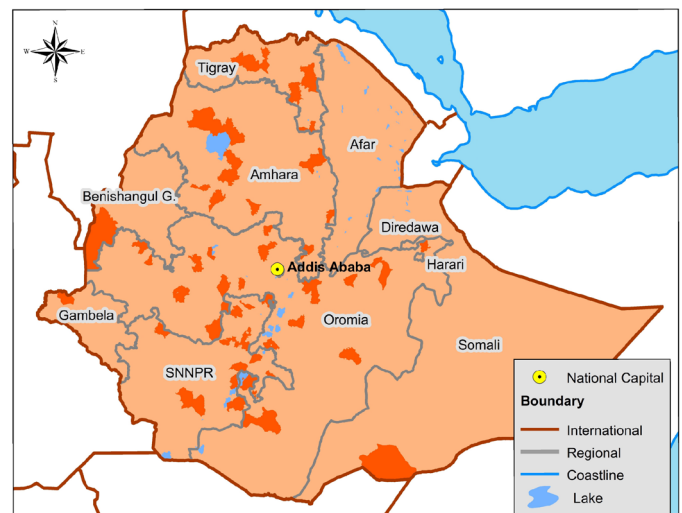
- **Keeping displaced children in school:** Educational and associated materials were delivered to more than 2,525 internally displaced school children. Distributed were: 1,634 dozen exercise books, 425 packets of ball point pens, 50 packets of pencils, 1,488 school uniforms, 50 pairs of shoes and 300 school bags.



RESPONDING TO DISPLACED PEOPLE

- **Ensuring displaced children have safe places to learn:** World Vision will provide internally displaced children in Tullo with a safe place to learn by establishing a child friendly corner and facilitating schooling. Additionally, women and girls in Tullo will be supported with hygienic materials.
- **Providing essential emergency relief items:** A total of 9,850 people received non-food items that included 2,650 blankets, 1,350 mattresses, 1,790 jerry cans and 1,765 buckets.
- **Focusing on displaced people in 7 areas:** World Vision has responded to IDPs in Tullo, Jarso, Melka Bello, Habro, Harer, Dire Dawa and Daro Lebu through revised area programme budgets, staff contributions and other grants. So far USD 320,987 has been invested in the response to the IDP situation, with 32,287 people benefiting from the distribution of non-food items, education and sanitation and hygiene activities.

WORLD VISION ETHIOPIA OPERATION AREAS



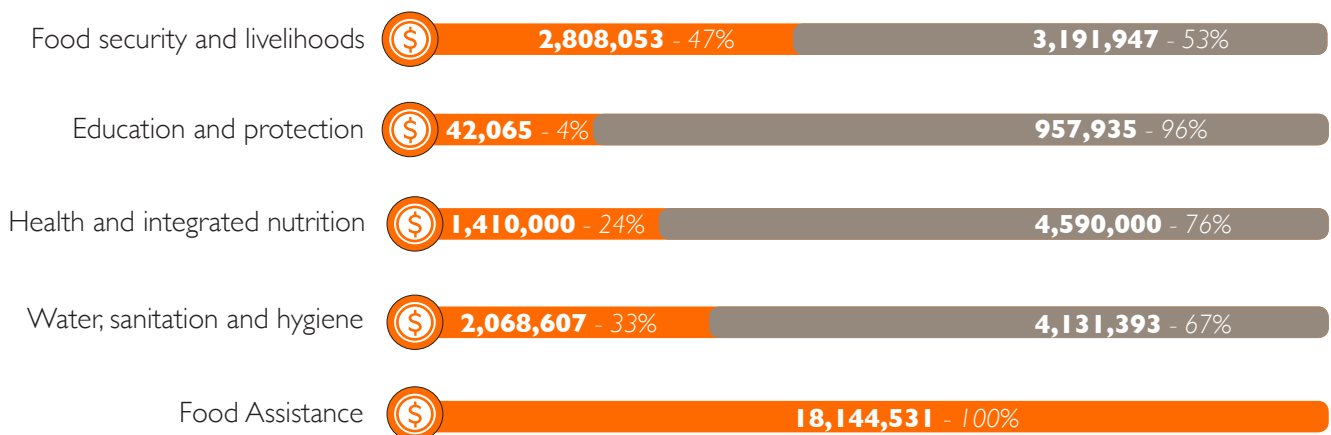
World Vision areas of operation

RESPONSE HIGHLIGHTS

People reached since 2017



Total Funding Requested(US\$) 37,283,254



■ Funding received (US\$)
 ■ Funding gap (US\$)

WORLD VISION ETHIOPIA HUMANITARIAN DONORS AND PARTNERS



Global Affairs
Canada

Affaires mondiales
Canada



World Vision



United States, Hong Kong, Germany, Canada,
Singapore, WWE (NEPRF), EARO-Pool Fund
and WWE Sponsorship revised budget

With donations from private individuals in Hong Kong, Germany, Canada, United States and Ethiopia; with additional contributions from World Vision Ethiopia staff members

PRIMARY CONTACT INFORMATION

Edward Brown

National Director, World Vision Ethiopia

E-mail: Edward_Brown@wvi.org

Skype: fasteddyw

Getenew Zewdu

Response Director

E-mail: Getenew_Zewdu@wvi.org

Skype: getenewzewdu

Alex Whitney

Integrated Programs Director

E-mail: alex.whitney@worldvision.org.uk

Skype: AlexdaWhitney