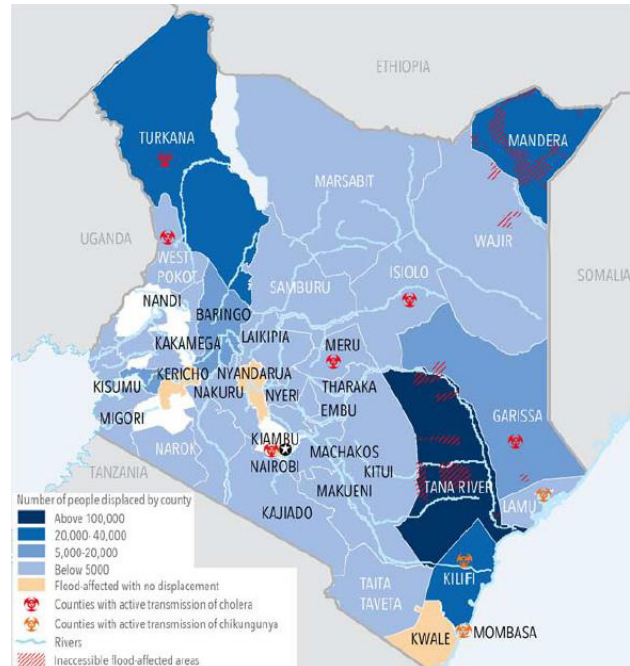


Key messages

- Disaster after disaster:** After months of a devastating drought, many of the same areas have now been inundated with flooding. An estimated 800,000 people have been affected by the flooding countrywide. Even after the floodwater disappears, families who lost livestock and crops during the drought will struggle to rebound as they have no seeds, livestock nor means to earn an income.
- Homes damaged or destroyed:** An estimated 300,000 people have been forced to flee their homes due to flooding in Kenya and have sought shelter on higher ground. Many remain in makeshift tents and require urgent humanitarian assistance.
- Malnutrition concerns:** The combination of displacement from flooding, destroyed crops and waterborne disease outbreaks, is likely to affect children's health and could lead to higher malnutrition rates.
- Children's education interrupted:** More than 332,000 school children have missed classes and exams as 739 schools were forced to close during the flooding. Many classrooms have been damaged or destroyed during the flooding, which will affect children's learning once classes resume.
- Lack of clean water:** Tens of thousands of people are without access to clean water after water systems were destroyed, leaving people more susceptible to waterborne diseases. Already, reports of cholera outbreaks have been reported in 8 counties in Kenya.
- Children emotionally affected:** Many of the 127,000 Kenyan children displaced by flooding may be in need of psychosocial support. Some have witnessed the death of loved ones or have seen their homes destroyed by flooding.
- Children at risk:** Natural disasters expose children to violence. When displaced, children are more likely to experience neglect, abuse, exploitation or sexual violence, which can lead to early marriage or pregnancy.

Areas facing flooding

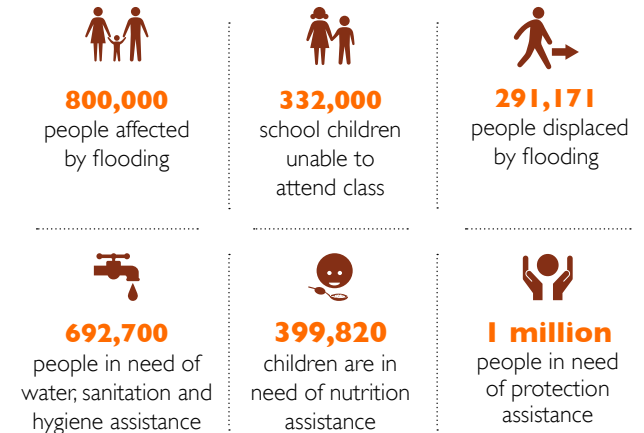


Gaps and needs

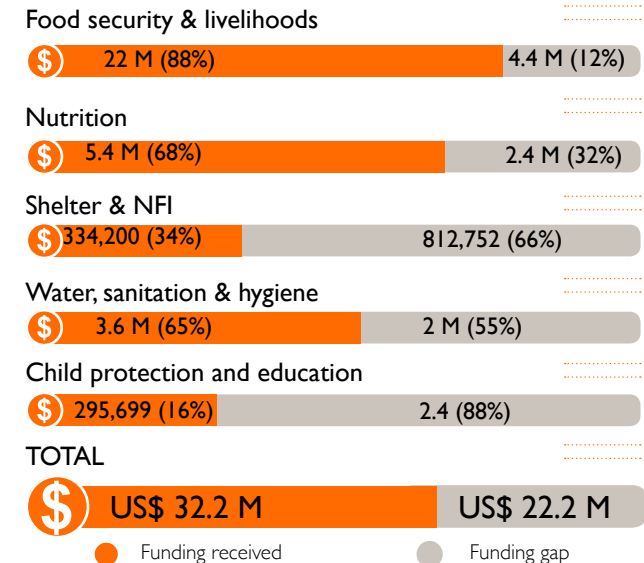
Key programme gaps/needs that World Vision could assist with:

- The key sectors of intervention include: education and protection, food security and livelihood, health and nutrition, access to water sanitation and hygiene. Therefore, more resource mobilization and capacity building initiatives required.

Humanitarian needs



Funding needs



*All financial figures in US\$

Response highlights



WATER, SANITATION & HYGIENE

- Through the West Pokot Drought response project, approximately 51,364 people are benefiting from rehabilitated shallow wells, boreholes, construction of masonry tanks, distribution and installation of 150 water tanks to schools and water user committee training.



SUPPORT TO THE ASYLUM SEEKERS

- In Moyale, 6,052 persons including 2,884 children benefitted through access to safe water, hygiene and sanitation facilities and sensitization sessions. Food was distributed to 3,989 persons during the month of May.



FLOODING RESPONSE

- WVK has distributed approximately 1,800 NFIs to the displaced IDPs reaching 1,800 households with pre-positioned NFIs and tents for shelter in Kilifi, Taita Taveta, Turkana, Makueni, Kisumu, Tana River Counties.
- World Vision Kenya has received funding from Hong Kong Government USD 788,970 to respond in Baringo, Homabay, Marsabit, Nakuru, Kisumu, Kilifi, Wajir, Tana River, Taita Taveta and Turkana, OFDA USD 1,000,022 to respond in Kiifi, Tanan River and Wajir Counties. World Vision US SNARE funds to replenish the NFI kits (USD 145,000) in WV US supported ADPs, WV Canada USD 88,026 for Canadian supported ADPs, IOM USD 150,000, to respond with NFI kits in Tana river County. The funds will be used to provide water filters, household and hygiene items and mobile toilets to the victims, school feeding programme and NFI kits



NUTRITION

- Through the Kilifi Drought response project, 258 community health volunteers were trained on community based health information systems, mass screening and active case finding. Data cleaning and LMIS sensitization was also conducted
- Through integrated health and nutrition outreaches in Kilifi and Turkana counties, 7,478 children aged 6-59 months were screened for malnutrition and integrated outreach and 2393 pregnant and lactating women (PLW), were screened for malnutrition.



SUPPORTING FAMILIES IN NEED

- WorldVision Kenya has supported families in Kilifi, Tana River, Kisumu, Homabay, Turkana, Makueni, Nakuru, Baringo, Elgeyo Marakwet, Taita Taveta through cash assistance, General food distribution, Food for Assets, WASH, education, protection, nutrition, health and shelter.



CASH BASED PROGRAMMING

- WorldVision Kenya has supported families in Kilifi, Tana River, Kisumu, Homabay, Turkana, Makueni, Nakuru, Baringo, Elgeyo Marakwet, Taita Taveta through cash assistance, General food distribution, Food for Assets, WASH, education, protection, nutrition, health and shelter.



FOOD SECURITY AND LIVELIHOODS

- 202,680 people benefiting from Food and Cash For Asset programmes in Kilifi, Taita Taveta, Makueni, Moyale, Baringo and Turkana through the Cash transfer and Food for Asset programs.

Response achievements

Reporting period MAY 01 - MAY 31, 2018



220,408
people reached
with food
security and
livelihoods



121,687
people reached
with clean water
and sanitation



108,078
children reached
with food security
and livelihoods



76,344
people reached
with health
and nutrition
services



24,910
people reached
with education
programmes



19,506
people reached
with protection
programmes



8,062
NFI people reached
with Shelter &
NFI



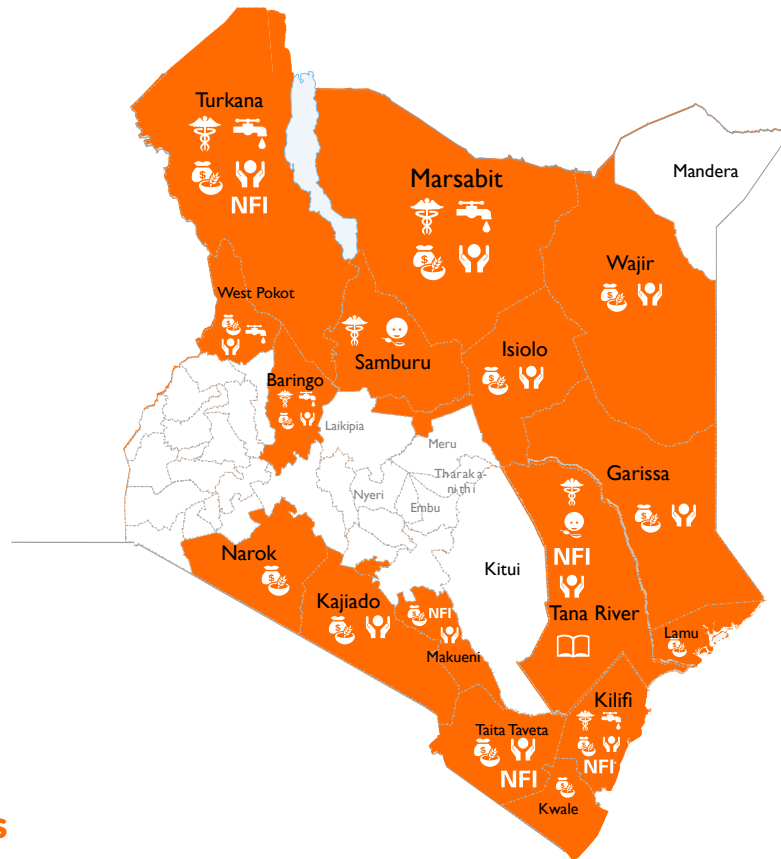
242,522
people reached with life-saving humanitarian
assistance in May 2018



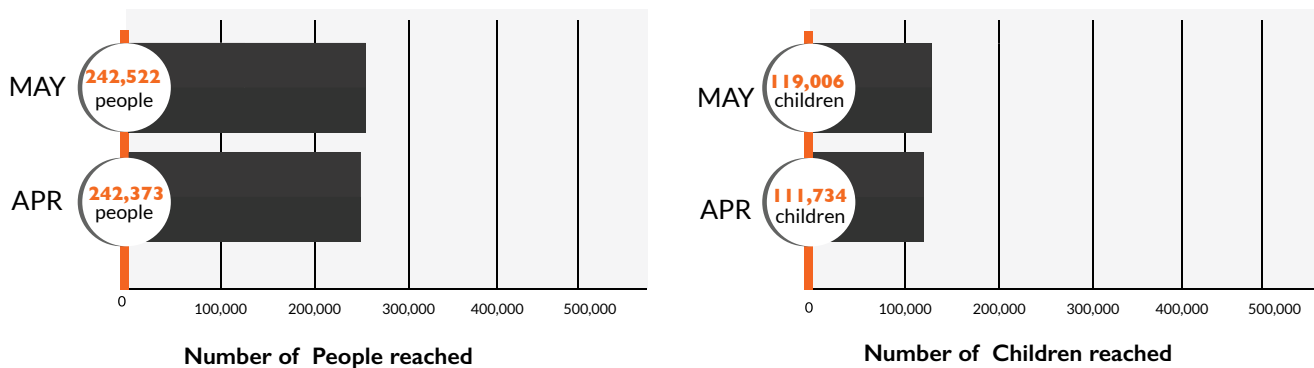
119,006
number of children reached with life saving
humanitarian assistance in May 2018

Response locations

- Response locations
- WASH
- Health & nutrition
- Education & protection
- Food security & livelihoods



Monthly achievements



Primary contact information

François Batingaya
 National Director
 E-mail: Francois_Batingaya@wvi.org
 Skype: francois_batingaya

Jacqueline Rioba
 Response Director
 Email: Jacqueline_Rioba@wvi.org
 Skype: jacky.rioba

May Ondeng
 Communications Manager
 Email: May_Ondeng@wvi.org
 Skype: mayondeng

National office donors & partners

World Vision

LOCAL INCOME GENERATED
 BY THE KENYAN PUBLIC

The boundaries and names shown and the designations used on these maps do not imply official endorsement or acceptance by the World Vision International