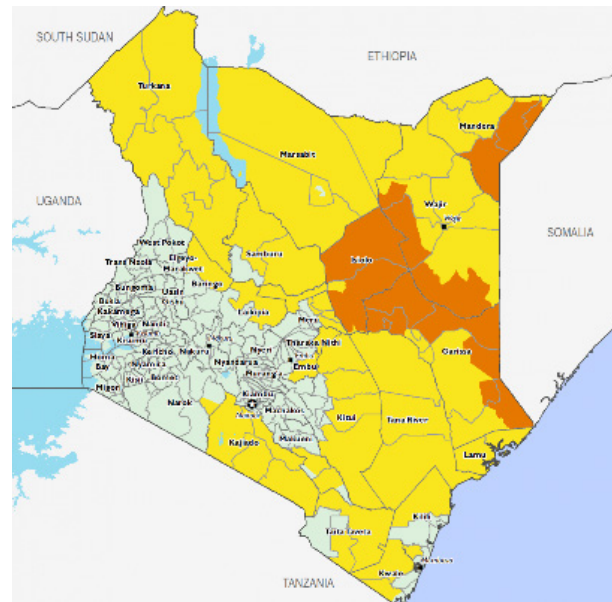


### Key messages

- Nutrition status:** According to The 2018 Long Rains Assessment, an estimated 510,593 children need treatment for acute malnutrition. In Turkana and North Horr, overall nutrition situation has significantly improved from *Very Critical Global Acute Malnutrition* (above 30%) to *Critical Global Acute Malnutrition* (15.0-29.9%). This is mainly attributed to an improvement in overall rainfall performance, which boosted food security.
- Food security situation:** According to the Long Rains Food and Nutrition Security Assessment (LRFNSA), increased crop and livestock production has generally improved food security countrywide. However, it is expected that recovery from the drought will take longer, especially in the pastoral areas, due to the effects of the drought on livestock and pasture, as well as the threat of livestock diseases.
- Refugees and asylum seekers:** There are an estimated 399,478 (nearly 60% of them children) refugees and asylum seekers in Kakuma and Dadaab refugees and Moyale Asylum seekers camps. A majority of the refugees are from South Sudan, Congo, Somalia, Burundi and Ethiopia (\* figures as at July 2018).
- Resource-based border conflicts:** 1,186 people in Baringo county are living as IDPs in Eldume camp, while another 247 people from Isiolo county have been forced to flee their homes after fighting between two communities erupted. They have settled in Garbatullah town.
- Rift Valley Fever (RVF):** 80% of the total 1,200 livestock deaths reported in Rift Valley, Tana River, Garissa, Mandera, Kilifi, Turkana, Wajir, Mandera and Isiolo counties were attributed to RVF. While quarantines restricting movement, slaughter, and trade of livestock products have been lifted in other counties, they remain in force in Garissa and Kilifi counties. This has disrupted the ability of households to earn income.

### Food security outlook

June-September 2018



**IPC 2.0 Acute Food Insecurity Phase**  
 1: Minimal 2: Stressed 3: Crisis 4: Emergency 5: Famine

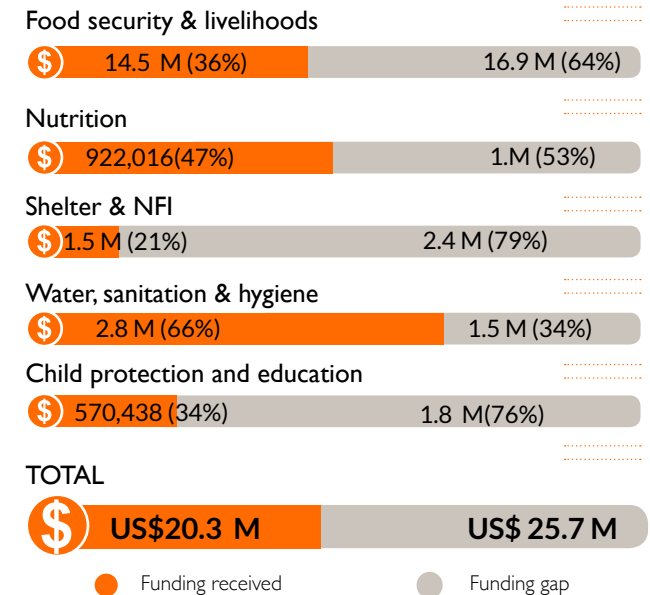
### Gaps and needs

- Food insecurity in flood-affected communities along River Tana and Kilifi counties are likely to persist as farmers lost their crops and livestock in the May-June floods and hence it will take longer for them to rebuild their assets and their means of earning an income. There's need to enhance food assistance to the most vulnerable families.
- Recovery and livelihoods interventions will also be critical to assist these communities to bounce back.
- Additionally, school children will require support in the form of uniforms and scholastic materials.
- Continued disease surveillance particularly in Tana River and Garissa counties affected by outbreak cholera and Rift Valley Fever is critical.

### Humanitarian needs



### Funding needs



\*All financial figures in US\$

## Response highlights



### WATER, SANITATION & HYGIENE

- 94,077 people in West Pokot, Baringo, Wajir, Kilifi, Turkana and Marsabit counties were able to access clean water from rehabilitated boreholes, shallow wells and pipeline extension.
- 271 families affected by floods in Homabay and Kilifi county received water treatment products in the form of water purification sachets and water filters, and hygiene and sanitation facilities such as mobile and hand washing stations.
- 50 Community Health Volunteers and Ministry of Health officers were trained on the use of digital chlorometers (these are used for testing residues of chlorine in water at both the household and water points).



### SHELTER & NFIs

8,243 people affected by floods in Tana River received Non-Food Items comprising of shelter, sleeping materials, water storage containers and kitchen sets.



### EDUCATION

150 pupils from Lotima primary school in Taita Taveta received meals under the school feeding programme.



### CHURCH PARTNERSHIPS

In Turkana county, 18 participants from Faith Based Organisations were trained on Kenya Integrated Rapid Assessment (KIRA) assessment tool in collaboration with the Kenya Red Cross.



### HEALTH & NUTRITION

- World Vision supported the sensitization and roll-out of Integrated Moderate Acute Malnutrition (IMAM) surge model in 10 health facilities in Turkana East and South sub counties.
- World Vision conducted mass screening for 25,243 people in Kilifi, Tana River, Marsabit and Turkana counties. Of these, 86 children under five, with Severe Acute Malnutrition (SAM) and 525 children under five years with Moderate Acute Malnutrition (MAM), as well as 166 Pregnant and Lactating, were referred to the health facilities for treatment.



### PEACE AND PROTECTION

19,506 children were reached through peace and protection initiatives that included learning, psychosocial, and recreation activities in Child Friendly Spaces (CFS), participation of school children in peace clubs across 21 schools in Kakuma and Moyale.



### LIVELIHOOD AND RESILIENCE

- 163,997 people (92,768 children) in Kakuma and Daadab refugee camps, and Moyale camps for asylum seekers received food through General Food Distribution (GFD) programme.
- 195,293 people (80,318 children) in Kilifi, Taita Taveta, Makueni, Moyale, Baringo and Turkana counties through Food and Cash for Assets programmes.
- 600 households in Taita Taveta county received support in the form of cash transfer of (each household received US\$30).
- 51 farmers whose crops were submerged during the floods period in parts of Kisumu received support in the form of training to increase their food production.

## Response achievements

Reporting period AUGUST 01 - AUGUST 31, 2018

**459,537**  
people reached with food security and livelihoods



**201,264**  
children reached with food security and livelihoods



**74,776**  
people reached with health and nutrition



**23,743**  
children reached with health and nutrition



**24,928**  
people reached with protection services



**19,506**  
children reached with protection services



**150**  
children reached with education



**94,077**  
people reached with water, sanitation & hygiene



**8,243**  
people reached with essential relief items



**5,243**  
children reached with essential relief items



**467,948**  
people reached with life-saving humanitarian assistance in August 2018

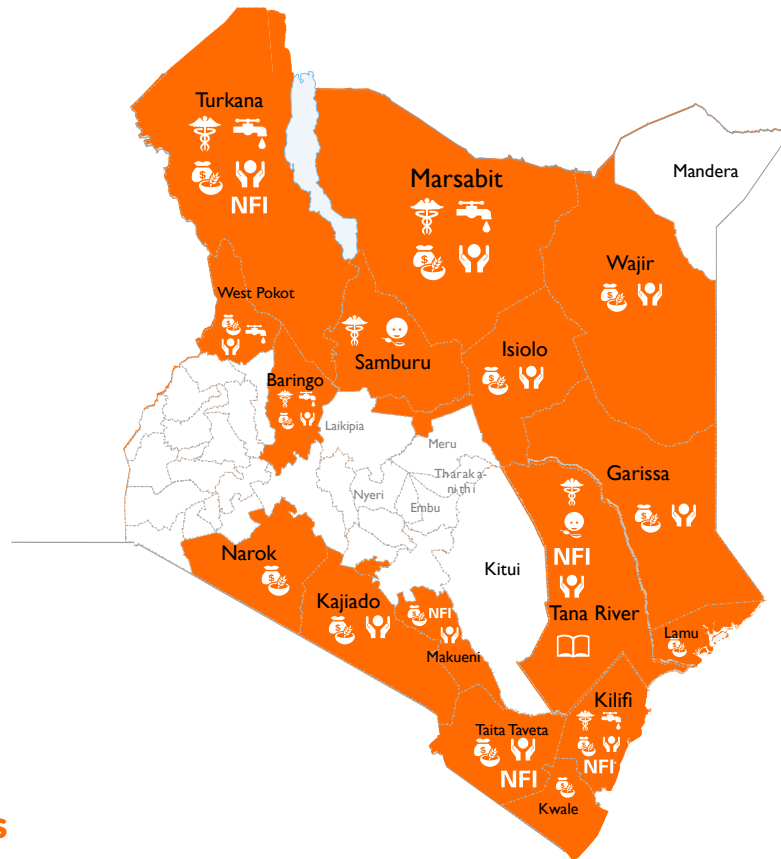


**239,341**  
children reached with life-saving humanitarian assistance in August 2018

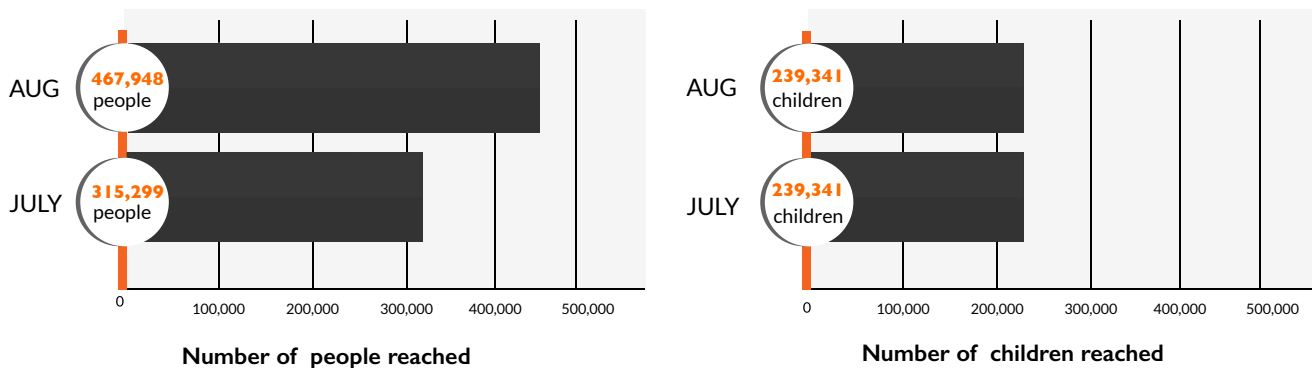


### Response locations

- Response locations
- WASH
- Health & nutrition
- Education & protection
- Food security & livelihoods



### Monthly achievements



### Primary contact information

**François Batingaya**  
 National Director  
 E-mail: Francois\_Batingaya@wvi.org  
 Skype: francois\_batingaya

**Jacqueline Rioba**  
 Response Director  
 Email: Jacqueline\_Rioba@wvi.org  
 Skype: jacky.rioba

**May Ondeng**  
 Communications Manager  
 Email: May\_Ondeng@wvi.org  
 Skype: mayondeng

### National office donors & partners

**World Vision**

Local income generated by the Kenyan public

The boundaries and names shown and the designations used on these maps do not imply official endorsement or acceptance by the World Vision International

Creation date: 10 September 2018

Sources: FEWSNET, UNOCHA, NDMA, UNICEF