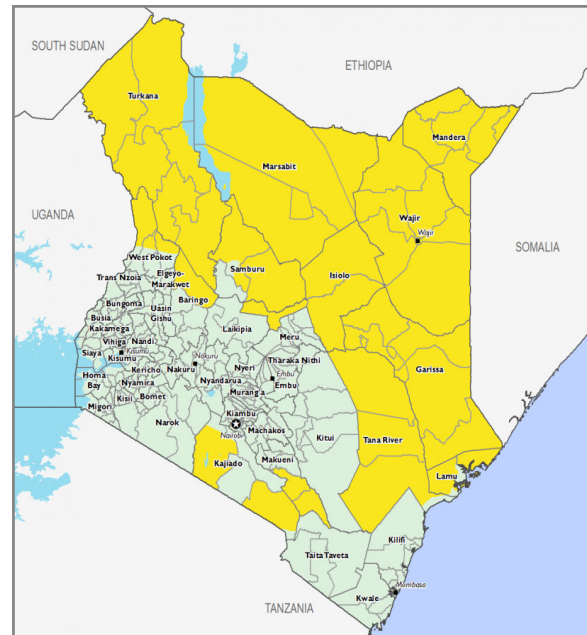


### Key messages

- Nutrition status:** An estimated 510,593 children below five years old, particularly, in Arid and Semi-Arid Land (ASAL) areas, require treatment for acute malnutrition. The prevalence of Global Acute Malnutrition (GAM) remains Critical (at 15-29.9%) in Turkana, Samburu, Mandera, Baringo, and Marsabit counties.
- Refugees and asylum seekers:** There are an estimated 489,239 (half of them children) in Kenya, a majority from Somalia and South Sudan. In 2018, there were an estimated 20,000 new arrivals from South Sudan.
- Repatriation:** An estimated 74,451 refugees in Dadaab refugee camp (north-east of Kenya) have been repatriated to Somalia since 2015.
- El Nino and La Nina alert:** Kenya should be on high alert for the El Niño phenomenon, this is according to the Global El Niño-Southern Oscillation (ENSO) Analysis. The agency recommends that the country carefully monitor national level forecasts and implement county-level actions including analysis and planning, coordination, advocacy and information management.
- Inter-communal violence:** An estimated 74,809 people have been displaced out of their homes following inter-communal violence between two neighbouring communities between Oromos and Somalis. The conflict has disrupted the lives and livelihoods, children and their families are in urgent need of food, shelter, health and nutrition, education, water and support to restore their livelihoods.
- World Vision response:** Following a rapid needs assessment that identified the most urgent needs, World Vision will assist an estimated 8,000 families (approximately 48,000 people) through shelter, food assistance, health, nutrition, water and sanitation and hygiene (WASH), education and protection interventions.

### Food security outlook

November 2018 - January 2019



IPC 2.0 Acute Food Insecurity Phase

1: Minimal 2: Stressed 3: Crisis 4: Emergency 5: Famine

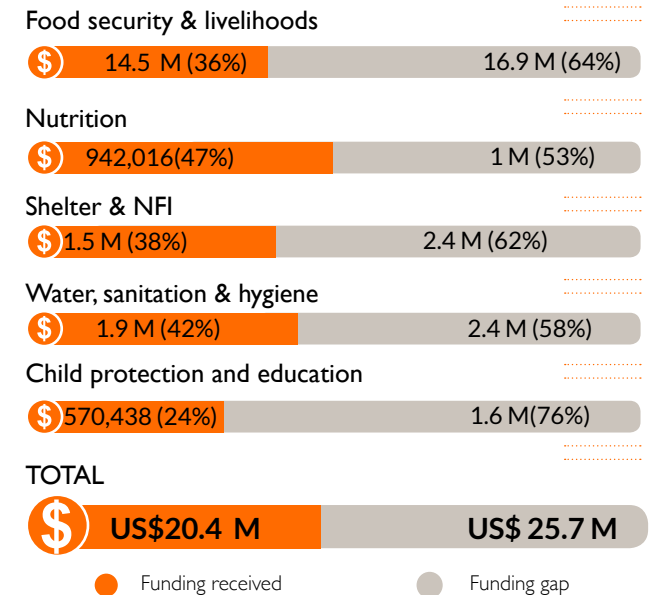
### Gaps and needs

**Increase in number of people in need:** The number of people needing assistance has been compounded following recent inter-communal conflict in north-eastern Kenya. At least 74,000 people were displaced out of their homes and require support to access basic services. This adds to the people left vulnerable by floods, threat of food insecurity, El Nino, and malnutrition for thousands of children.

### Humanitarian needs



### Funding needs



\*All financial figures in US\$

## Response highlights



### WATER, SANITATION & HYGIENE

- **Clean water:** World Vision completed pipeline extension in Kilifi through the drought response project and as a result 7,820 people have access to clean water from an improved source.
- **Sanitation:** 1,815 people including 711 children in Wajir and Kilifi counties were sensitised on sanitation and hygiene best practices such as handwashing at critical times, latrines use, proper waste disposal as well as personal hygiene. Additionally, 3,423 people including 2,403 children in Kilifi received bar soaps.
- **Hygiene promotion:** 30 Community Health Volunteers in Baringo were sensitised on hygiene and sanitation and water treatment at point of use. On the same activity, 1,900 households received water purifiers. 116 people were sensitised on tippy tap to promote hygiene practices among the community members in Makueni.



### NFI SHELTER & NFIs

322 households affected by floods in Makueni County received non-food items that included shelter kits and other household items.



### HEALTH & NUTRITION

World Vision conducted mass screening for malnutrition and community outreaches reaching 3,692 people (of these were 2,336 children under five years old) in Tana River and Wajir counties.



### FOOD SECURITY & LIVELIHOODS

In partnership with the World Food Programme (WFP), World Vision supported 225,329 refugees including 129,084 children living in Kakuma and Dadaab camps and host communities, through direct food distribution. A total of 2,297 metric tons of assorted food commodities was distributed.



### PEACE & PROTECTION

- World Vision supported establishment of help desks and accountability mechanisms in four schools in Kakuma, as a way strengthening accountability reaching 2,580 refugee children.
- Additionally, 49 peer educators were trained on the Peace Road curriculum, and 42 teachers received training on Psychosocial First Aid (PFA) where they were taken through basic skills in dealing with various issues and traumas.

## Response achievements

Reporting period November 01 - November 30, 2018



**225,329**

people reached with food security and livelihoods



**129,084**

children reached with food security and livelihoods



**3,692**

people reached with health and nutrition



**2,336**

children reached with health and nutrition



**22,232**

people reached with water, sanitation & hygiene



**14,023**

children reached with water, sanitation & hygiene



**1,932**

**NFI** people reached with essential relief items



**815**

children reached with essential relief items



**255,856**

people reached with life-saving humanitarian assistance in November 2018

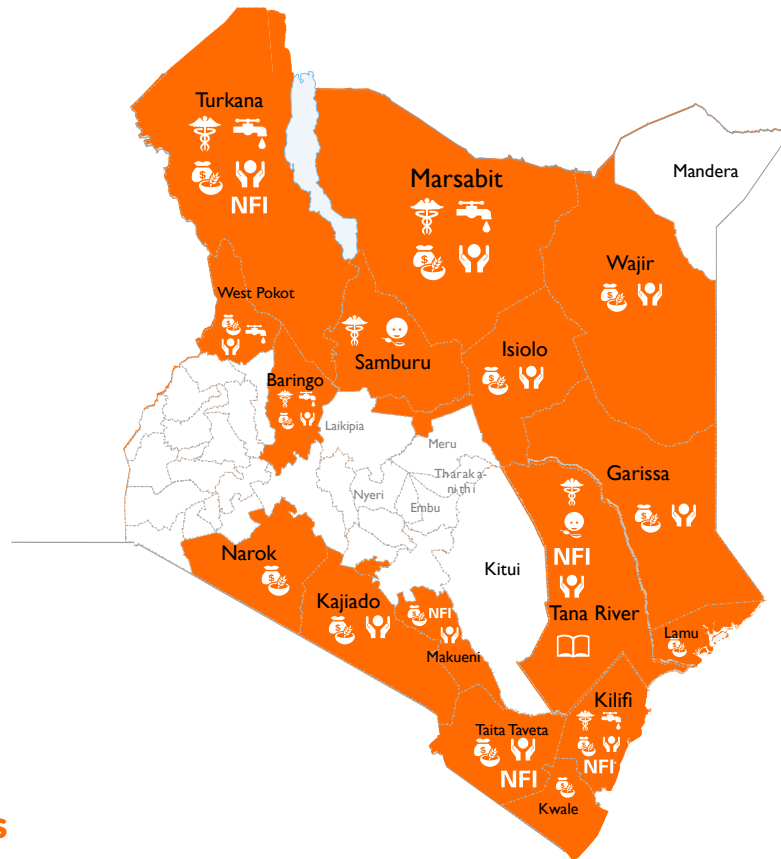


**138,838**

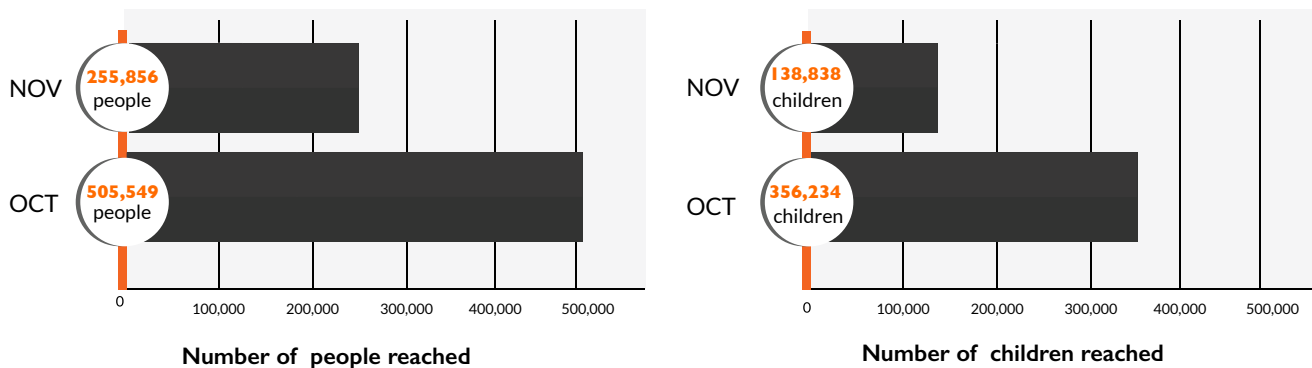
children reached with life-saving humanitarian assistance in November 2018

### Response locations

- Response locations
- WASH
- Health & nutrition
- Education & protection
- Food security & livelihoods



### Monthly achievements



### Primary contact information

**François Batalingaya**  
 National Director  
 E-mail: Francois\_Batalingaya@wvi.org  
 Skype: francois\_batalingaya

**Barzil Mwakulomba**  
 Food Assistance Manager  
 Email: Barzil\_Mwakulomba@wvi.org  
 Skype: barzil.mwakulomba1

**May Ondeng**  
 Communications Manager  
 Email: May\_Ondeng@wvi.org  
 Skype: may.ondeng

### National office donors & partners



The boundaries and names shown and the designations used on these maps do not imply official endorsement or acceptance by the World Vision International

Creation date: 10 December 2018

Sources: FEWSNET, UNOCHA, NDMA, UNICEF