

BANGLADESH

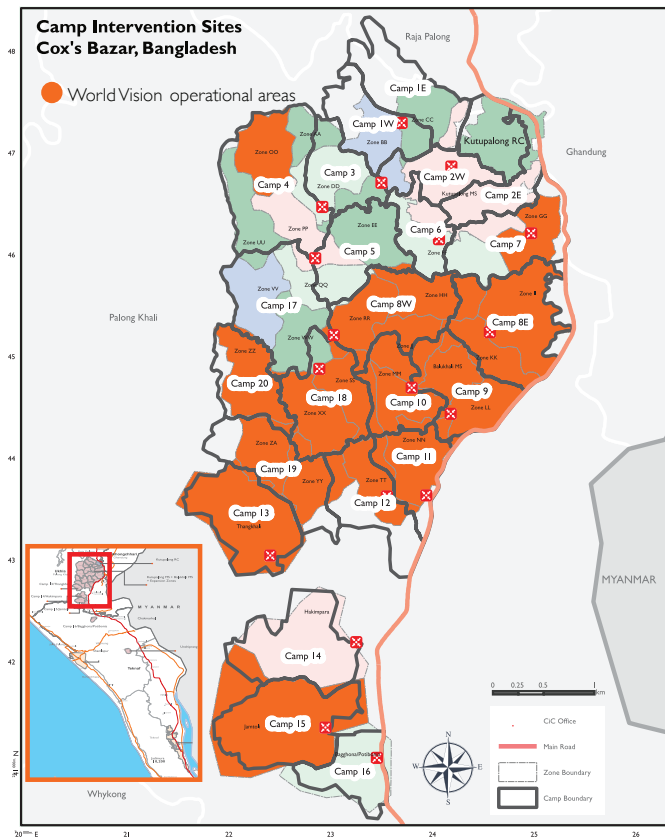
MYANMAR-BANGLADESH REFUGEE CRISIS RESPONSE FACT SHEET | AUGUST 2018



Key Messages

- **Education disrupted:** More than 625,000 children in refugee and host communities need access to educational services. Of 117,000 adolescents in need, only about 2,000 are receiving education or life-skills training. The international community must support the Government of Bangladesh to reach children with high-quality, relevant and inclusive education.
- **Refugee status required:** Without official refugee status, the 890,000 displaced people from Myanmar do not have basic rights, access to services and international protection. This increases their vulnerability to exploitation, while limiting their resettlement options abroad.
- **More flat, safe land needed:** Many refugees live in overcrowded camps that are ill-equipped to protect them from monsoons and cyclones. More adequate, flat land is required for sustainable relocation sites. Access to cyclone shelters and safe spaces for temporary evacuations is also urgently needed.
- **Gender-based violence widespread:** Displacement and resulting poverty increases the vulnerability of women and girls to violence, especially given that opportunities to earn a livelihood are limited. This makes them particularly at risk of neglect, abuse, exploitation or sexual violence, leading to negative coping mechanisms such as child labour and early marriage.
- **Long-term, right-based strategy a must:** NGOs are ready to work with the Government of Bangladesh to help develop a rights-based plan for supporting refugees until they can return home in a safe, voluntary manner. Their rights and protections must be guaranteed until that time.
- **Crisis within a crisis:** After fleeing violence in Myanmar, people living in the world's largest, most densely populated refugee camp battled to survive seasonal monsoon rains. Hazards included flooding, landslides, collapsed or damaged shelters, contaminated water, overflowing latrines and risk of disease. Thankfully, few lives were lost due to effective disaster mitigation by UN agencies and NGOs, including World Vision.

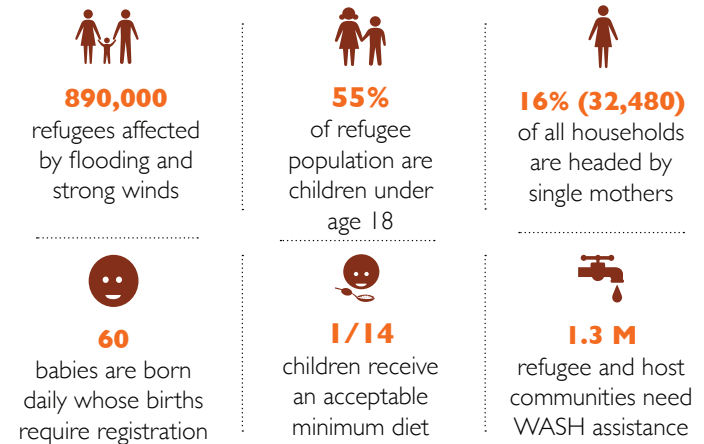
Camp Intervention Sites



Our Strategic Partners:



Humanitarian Needs



Response Highlights



PROTECTION

Our goal is to provide principled, timely protection and assistance that saves lives, alleviates suffering and respects the dignity of people in refugee and host communities, especially children.

CHILD PROTECTION

World Vision is strengthening child protection systems at the family and community level, preventing and responding to abuse. Key achievements include:

- In our 12 child-friendly spaces, children can play, receive emotional support and have a sense of normalcy. To date, 1,721 children are enrolled; on average 971 children each week attend sessions led by 49 trained facilitators.
- 12 community-based child protection committees with 132 members support community-level monitoring, prevention and response to violence against children.
- 832 children participated in awareness sessions on child marriage, child labour, personal hygiene and road safety.
- 1,346 children were equipped with waterproof ID bracelets provided by UNICEF to mitigate family separation during monsoon storms.
- 35,800 adolescent girls and women received dignity kits to support their well-being.
- 992 households with children were visited and provided with information on preventing and responding to violence against children.

Visit Our Website:

<https://www.wvi.org/emergency/myanmar-bangladesh-refugee-crisis>



GENDER-BASED VIOLENCE PREVENTION

World Vision will soon open a new safe space for women and adolescent girls, collaborating closely with case management agencies to strengthen referral pathways and care. Psychosocial support will be provided while sensitizing families, including men and boys, to identify and prevent gender-based violence. Some 2,000 people have benefitted from World Vision's GBV awareness sessions.



WATER, SANITATION AND HYGIENE

World Vision has 4,495 WASH facilities (83 deep-tube wells, 1,544 latrines, 625 waste bins, 1,722 handwashing points, 521 gender-sensitive bathing cubicles and two faecal sludge management units) in 10 camps.



NUTRITION

World Vision recently launched a programme to prevent and treat moderate acute malnutrition in children age 6-59 months, as well as malnourished pregnant and lactating mothers. Over 25,000 children and mothers will benefit from this initiative, conducted in partnership with the World Food Programme.



SHELTER AND NFI

Over 21,500 families received upgraded shelter kits (60 bamboo poles, tarpaulins, rope, tools) to strengthen their homes against monsoon rains. This included technical and construction support for vulnerable families, including women-headed households. All households received cash support for their labour.



FOOD SECURITY, LIVELIHOODS AND CASH-BASED PROGRAMMING

Income opportunities help ensure people's dignity and well-being, while building confidence and resilience. Over 21,500 families have benefitted from income they earned through our project activities, including bridge construction, slope stabilisation and road paving. Our goal is for women to comprise 50 percent of our cash-for-work teams.

Response Achievements



890,000 people

We are advocating for the rights of all refugees, including their voluntary, safe and dignified repatriation to Myanmar



154,000

people reached with clean water and sanitation facilities



21,500

people reached with upgraded shelter kits



25,979

children and mothers receiving nutrition support



108,000

people received essential items (hygiene kits, cooking equipment, baby supplies, feminine hygiene products.)



21,504

families benefitted from cash-for-work activities



971

children each week benefit from protection activities



213,700

people reached with life-saving humanitarian assistance to date