

# WORLD VISION KENYA HUNGER RESPONSE SITUATION REPORT NO.5

25 MAY 2017

# World Vision



## KEY MESSAGES

- In early May, long rains arrived in parts of Kenya after a 2-month delay, as long rains usually begin in March. Heavy rainfall caused flooding in some areas of the country. The food security needs remain, since not all parts of the country received rain. The prognosis is that the long rains will have minimal impact on crop production.
- Army worm infestation is destroying maize crops in Western, Eastern, Nyanza and Coast. Some 143,000 hectares of maize have already been affected and the figure is estimated, by FAO, to worsen to 800,000 hectares. The total area growing maize is 1.3 million hectares. The estimated cost of responding is \$33 million USD for 800,000 hectares.
- Action and assistance is needed to respond to 2.7 million people, including 700,000 children under age five, who are facing starvation and possible famine due to lack of food and water in Kenya. The government of Kenya estimates that the current number of people requiring humanitarian assistance will rise from the current estimate of 3 million to 4 million by July 2017.
- Government in partnership with World Food Programme (WFP), World Vision and others have increased humanitarian interventions through unconditional cash transfer under the Food for community programme targeting 1.3 million beneficiaries for three months. World Vision Kenya is supporting unconditional cash transfers to help support nutrition, health, education and protection status of vulnerable children and families in five counties.
- World Vision Kenya has already reached 205,619 people affected by drought through normal programming/early recovery supported by donors and World Vision support offices with nine million USD. An additional 1.6 million USD is required to provide and scale up life-saving humanitarian assistance to 252,000 more people facing starvation in 15 counties for the next 12 months.

## SITUATION HIGHLIGHTS



**343,559**

under 5 children and

**43,400**

pregnant and lactating women  
are acutely  
malnutrition

**75,010**

under 5 children are  
severely malnourished



**2.9 million**

people in need of health  
intervention



**3 million**

people need access to safe  
drinking water



**2.6 million**

people in need of food  
assistance and livelihood  
intervention



**175,655**

people will be targeted  
for protection interventions



**1.2 million**

children in need of  
education intervention

\*All financial figures in US dollars

## HUMANITARIAN SITUATION OVERVIEW

- Heavy rains were received over several regions of Kenya in the month of May. The hardest hit regions are counties surrounding Mount Kenya, as well as, coastal areas near Mombasa and Garissa including Dadaab refugee camp. Some other parts of the country, mostly the ASAL regions, are still experiencing a prolonged dry spell with little or no rains received.
- Consumer prices of basic foods in Kenya have sharply increased with inflation rate rising up to 11.5 per cent in April 2017 (highest since May 2012) compared to 10.3 percent in the previous month of March.
- Kala-azar (Visceral Leishmaniasis) cases continue to be recorded in Wajir and Marsabit with Wajir West Sub County hardest hit with 51 cases listed, while dengue outbreak has been reported in the coastal region. Cholera and measles outbreak have been confirmed in Dadaab Refugee camp.
- Conflict over resources and drought displacements continue in Baringo County. A total of 16,615 people are still displaced in IDP camps in Baringo North and Marigat Sub-Counties. The latest incident of insecurity has been reported in Kapedo on the Turkana and East Pokot border resulting in fatalities. 15 health facilities remain closed in East Pokot Sub-County due to ongoing security operation in the area, and access to children in need in East Pokot Sub-County remains a challenge.
- Farmers in various parts of the country, particularly in Kenya's grain basket, have reported Fall Army Worm infestation of crops. The worms have been sighted in Trans Nzoia, Uasin Gishu and Nakuru in the Rift Valley, Kakamega and Bungoma in Western Kenya, and Kwale at the Coastal region. In addition to affecting maize, sorghum, millet and wheat crops, the deadly pest also poses danger to the livestock sector as it attacks pasture and any green vegetation. Approximately 143,000 hectares (ha) of land in Kenya have been affected. The government projects that up to \$33 million USD is required for a response. Currently, the land area growing maize in Kenya stands at 1.3 Million ha of which up to 0.8 million ha may soon become affected for Fall Army infestation.

## WHAT WORLD VISION IS DOING



### HEALTH & NUTRITION

- An integrated (multi-sectoral) outreach was conducted in Koror Don Bosco dispensary, Merille and Lontolio areas in Marsabit. About 25 percent of children under age 5 who were screened were either severely malnourished or moderately acutely malnourished (MAM).



### WASH

- About 8,800 people received purification tablets for water treatment in Osiligi, Kajiado, Yatta and Kitui Counties.
- Over 12,000 people are to benefit from the borehole

repair project in Tseikuru.

- Water Users Association committees in Lorroki were supported with fuel for pumping water.



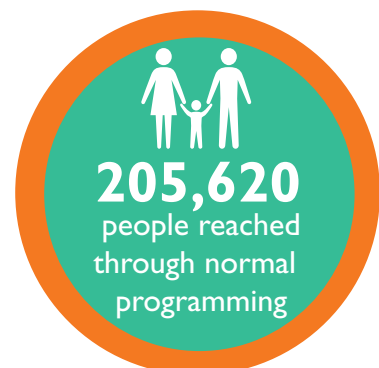
### FOOD SECURITY AND LIVELIHOODS

- In communities of Wajir where World Vision operate, 12,600 people affected by the drought benefited from unconditional cash transfers for food.



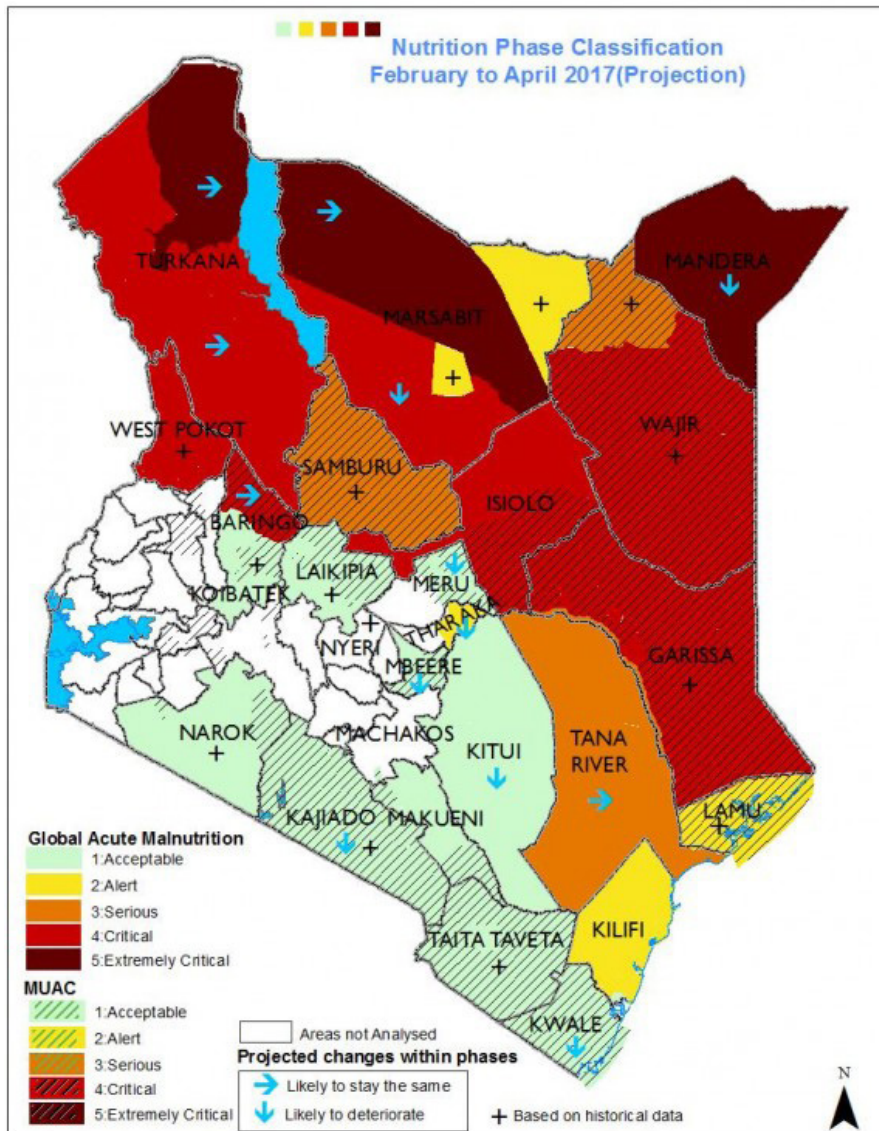
### EDUCATION & PROTECTION

- 8,577 children from 26 schools benefitted from school feeding intervention in Mwatate. A total of 4.49 Metric Tonnes of food was distributed.



## NUTRITION STATUS IN KENYA

## RESPONSE HIGHLIGHTS



**202,680**

people reached with food security and livelihood support



**21,500**

people reached with water, sanitation and hygiene support



**2,940**

people reached with health and nutrition support

**NFI**

**2,400**

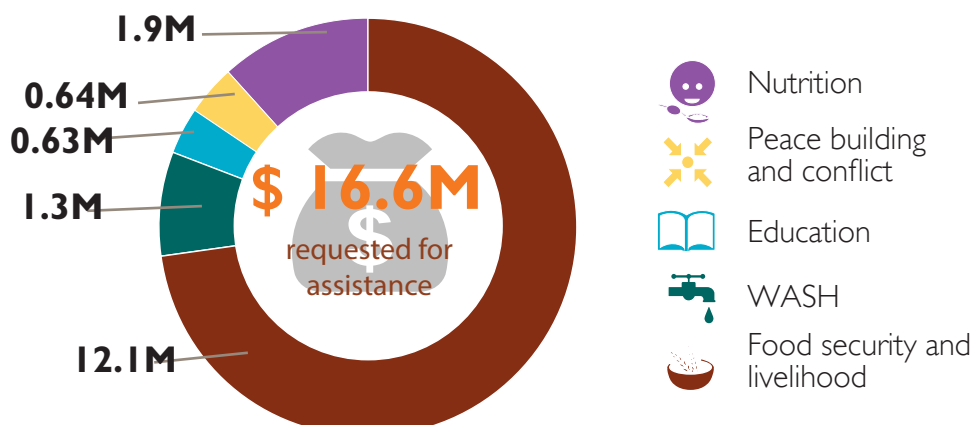
people reached with non food item interventions



**8,580**

children reached with child protection and education interventions

## GAPS AND FUNDING REQUIREMENTS (in millions US\$)



## ADVOCACY AND ENGAGEMENTS

World Vision's Lawrence Kiguro was on Global Chinese TV (GCTV) explaining the impact of the Fall Army Worm infestation on farmers in the country, and its likely impact on food production. A WV US media trip with international journalists to Marafa ADP gathered communication resources that help highlight the WASH and drought challenges in the area. A media visit to Turkana west and south helped amplify the hunger crisis as stories and photos from Turkana west and south has been critical in enhancing the prayer day campaign. It is anticipated that the World Vision US President will visit Turkana in June to raise the profile of the hunger crisis in Kenya and the region. WV Korea SBS Filming / Celebrity visit to Turkana south helped increase awareness about families suffering in the region and it is hoped that the resulting communication campaign will generate much needed funding. International journalists from New Zealand were facilitated by World Vision to highlight the immense need in Marsabit and Kakuma Refugee Camp, as well as the humanitarian response.

## GAP AND FUNDING REQUIREMENTS

**\$16.6M** requested for hunger crisis response in millions US\$



## WV KENYA HUMANITARIAN DONORS AND PARTNERS



## PRIMARY CONTACT INFORMATION

### Jacqueline Rioba

Response Director

Email: [Jacqueline\\_rioba@wvi.org](mailto:Jacqueline_rioba@wvi.org)

Skype: jacky.rioba

### May Ondeng

Communications Manager

Email: [May\\_Ondeng@wvi.org](mailto:May_Ondeng@wvi.org)

Skype: may.ondeng