

# South Sudan - Situation Report



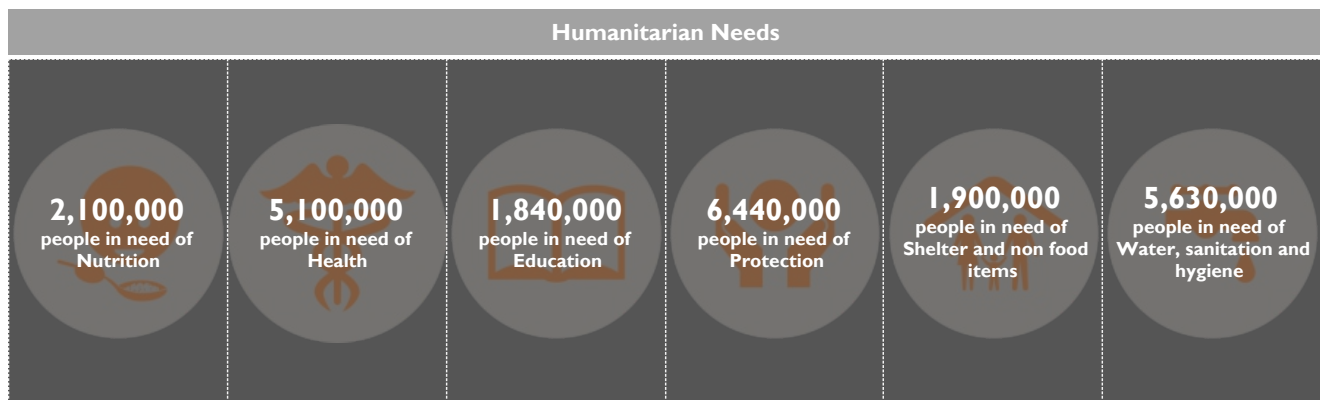
**Country**  
All

**Year**  
2018

**Month**  
December

## Key messages

- **Food Insecurity:** December 2018 marks five years since the outbreak of the current conflict in South Sudan, which has resulted in an estimated 380,000 excess deaths, 4.4 million people displaced, substantial macroeconomic decline, and widespread acute food insecurity. World Vision's food assistance has reached close to 300,000 people through various programming initiatives across the four zones in the country.
- **Preparedness:** Following the outbreak of the Ebola Virus Disease (EVD) in the North Kivu Province of the neighbouring Democratic Republic of Congo at the beginning of August 2018, there is an increased threat of cross-border spread into South Sudan. To prevent the potential spread and ensure readiness for any eventualities, a preparedness and response plan has been activated in the Western Equatoria zone led by World Vision and in partnership with the Ministry of Health, World Health Organisation and other partner agencies.
- **Resilience and Sustainability:** To address the long-term needs of the population in-need, World Vision's programmes build the capacity and skills of people to support themselves. Trainings on livelihoods, vocational and business skills, proper nutrition, health and sanitation among others are being conducted to encourage resilience and sustainability.



## Gaps and needs

- **People in need of humanitarian assistance:** The humanitarian crisis in South Sudan is complex, with a combination of factors increasing the vulnerabilities of a majority of the population. An estimated 6.1 million people, (more than half the country's population) continue to face acute food insecurity and hence humanitarian support particularly in the form of emergency food assistance is necessary in averting the risk of starvation or famine.
- **Persistent insecurity and violence:** Insecurity along the major roads has been reported since May continues to pose a threat to the lives of humanitarian workers as well as hampering delivery of aid.

## What World Vision is doing



### Food security and livelihoods

- Food assistance: 278,368 people received food assistance through general food distribution, school feeding, blanket and supplementary feeding programmes.
- Cash assistance: 99,802 benefited through cash transfer support across Juba, Gogrial West and Yambio.
- Livelihood supplies: 1,376 households in Renk, Melut and Gogrial West received vegetable seeds and tools to increase household level food production.
- Animal vaccination: 31,975 livestock in Upper Nile were vaccinated against diseases in efforts to reduce loss of livestock and livelihoods caused by disease outbreaks.



### Protection

- Child Friendly Spaces: Over 10,000 children in Juba and Greater Upper Nile attended World Vision child friendly spaces where they accessed learning, participated in recreational activities and received psychosocial support services.
- Behavioral change: 2,089 people in Upper Nile, Gogrial West and Warrap learnt about gender, domestic and sexual violence, child rights, child abuse and referral mechanism and pathways.



### Nutrition

- Nutrition screening and treatment: 108,526 children under five years old, pregnant and lactating mothers in Juba, Western Equatoria, Upper Nile and Warrap states were screened for malnutrition.
- Behavioural change messaging: 17,149 mothers and 1,418 men learnt about maternal infant and young child nutrition appropriate hygiene practices, health seeking behaviors and good nutrition through community awareness and breast feeding corners.



### Water, sanitation & hygiene

- Potable water: 132,564 people in Upper Nile received clean drinking water daily from World Vision installed water supply systems.
- Behavioral change: 12,880 people learnt about appropriate hygiene practices through participatory hygiene and sanitation hygiene approaches in Renk, Malakal, and Melut.



### Health

- Ebola response: 31,207 people were screened for Ebola virus disease at Yambio Airport, Sakure, Gangura, Makpandu and Ezo-Nabiapai entry points.
- Curative consultations: 75,343 people in Upper Nile, Warrap and Western Equatoria people accessed free curative consultations through government health facilities supported by World Vision.



### Shelter and non-food items

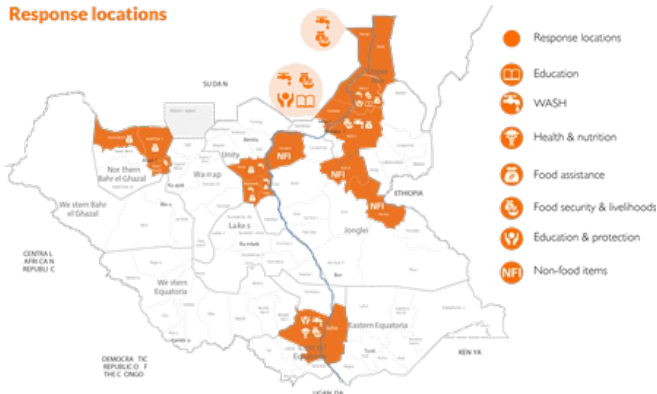
- NFI supplies: 2,153 people received the ES/NFIs - plastic sheets, kitchen sets and blankets.

## Gaps and funding requirements

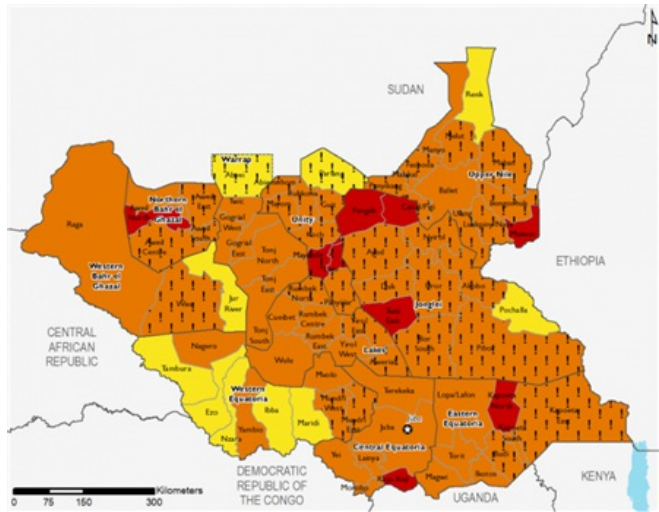
World Vision South Sudan is requesting **US\$ 36,869,647** to expand its response activities. So far, it has received **US\$ 44,806,647** and is requesting an additional **US\$ 4,744,186** to close the gap and reach more people in need.

# South Sudan - Situation Report

## Response locations



## FEWSNET Food Security Outlook February - May 2019



The boundaries and names shown and the designations used on these maps do not imply official endorsement or acceptance by the World Vision International  
Sources: UNOCHA, WFP, UNOPS, IPC, FEWS.NET

### IPC 2.0 Acute Food Insecurity Phase

1: Minimal 2: Stressed 3: Crisis 4: Emergency 5: Famine

## Donors and partners



Empowered lives.  
Resilient nations.



NEW ZEALAND  
FOREIGN AFFAIRS & TRADE  
Aid Programme



Food and Agriculture Organization  
of the United Nations



Department for  
International  
Development



The UN Refugee Agency



USAID  
FROM THE AMERICAN PEOPLE



World Food  
Programme



Irish Aid  
An Roinn Gnóthaí Eachtracha agus Trádála  
Department of Foreign Affairs and Trade



Government of the Netherlands



Global Affairs  
Canada

Affaires mondiales  
Canada



Aktion  
Deutschland Hilft  
Bündnis deutscher Hilfsorganisationen

## Primary contact information

**Lilian Mumbi**  
Operations Director  
Lilian\_mumbi@wvi.org

**Martin Omoro**  
Programme Quality & Strategy Manager  
Martin\_omoro@wvi.org

**Mesfin Loha**  
Country Programme Director  
mesfin\_loha@wvi.org