

SOUTH SUDAN

EAST AFRICA HUNGER CRISIS SITUATION REPORT | MAY 1 - MAY 31 2018



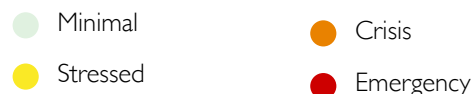
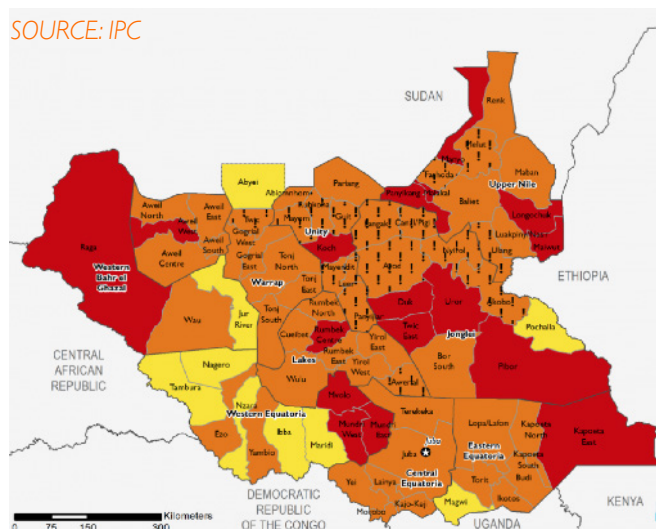
Key messages

- Alarming malnutrition rates:** In the lead up to the lean season of May–July 2018, the nutrition situation is expected to deteriorate significantly as a result of unprecedented levels of food insecurity, outbreaks of diarrhea and other illness, poor infant and young feeding practices as well as limited access to services due to the heavy rains. During this period, the counties of Leer and Mayendit in Unity and Longochuk and Renk of Upper Nile are expected to reach Extreme Critical levels (IPC Phase 5) as per the IPC for Acute Malnutrition Classification (GAM \geq 30%).
- Forced to flee conflict:** In early May, conflict in Pigi County forced the community to flee their locations to Khorfulus. Humanitarian agencies conducted an assessment and subsequent emergency response. Assistance is needed to address nutrition, clean water, hygiene and sanitation and gender based violence, along with food and other essential relief items.
- Humanitarian workers are not a target:** Increased insecurity in the Greater Equatoria resulting in humanitarian workers being targeted for abduction is becoming a worrying trend that would definitely affect humanitarian service delivery in the area.
- Economic situation:** The deteriorating economic environment plays a significant role in preventing many South Sudanese from reaching their basic food needs. The erosion of individual and household capacity to obtain adequate food consumption levels has thus reduced their overall levels of resilience.
- Optimize the response:** WorldVision continues to respond to the crisis, providing more than 565,000 people with assistance in May. However, the response must be scaled up in a conflict sensitive way while investment in recovery and resilience programming will have the greatest impact on South Sudan's ability to face and bounce back from the numerous vulnerabilities they are currently facing.

Food insecurity and displacement

March - May 2018


SOURCE: IPC





Gaps and needs


- Shortage of fuel due to border closure with Sudan impacting negatively on humanitarian operations in Greater Upper Nile especially on the western banks as logistics are hampered.

Humanitarian needs



7 million people in need of humanitarian assistance


4.2 million children in need of humanitarian assistance

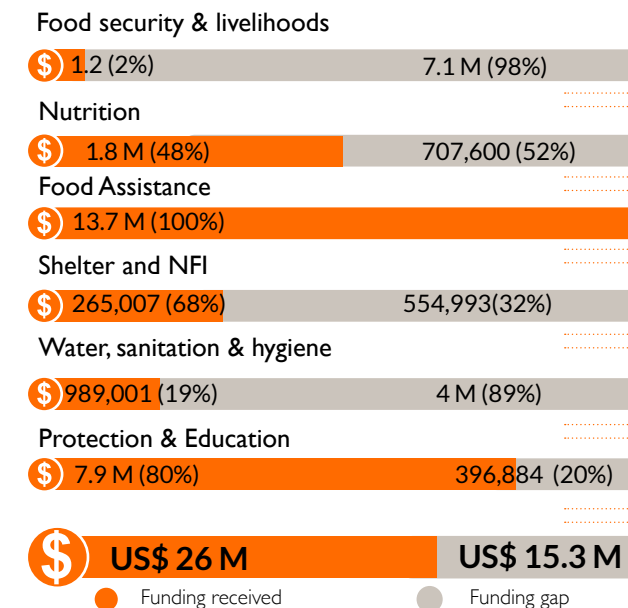

1.9 million people internally displaced by conflict


5.6 million people in need of water, sanitation and hygiene assistance


2 million people are in need of nutrition assistance


5.6 million people in need of food security and livelihood assistance

Funding needs



*All financial figures in US\$

The boundaries and names shown and the designations used on these maps do not imply official endorsement or acceptance by the World Vision International

Creation date: 19 June 2018

Sources: UNOCHA, WFP, UNOPS

Response highlights



FOOD SECURITY AND LIVELIHOODS

- **Food assistance:** A total of 264,841 beneficiaries were reached through the food assistance programme with 2,765.31MT of food commodities distributed through general food distribution, food for assets, food for education, blanket supplementary feeding and therapeutic supplementary feeding. A total of USD606,460.29 was also distributed through cash based programming.
- **Resilience skills:** In Juba, an adaptive trial site has been demarcated and planted with 50 different varieties of sorghum and seven varieties of pearl millet and sorghum seeds. In total, 18 farmers participated in the planting process with support from World Vision Australia technical staff and government officers from County and National Ministry of Agriculture.
- **Supplies:** 693 vulnerable and food insecure households received combined kits, namely vegetable and fishing kits, along with hand tools.



EDUCATION & PROTECTION

- **Food- for- education:** 45.092MT was distributed to 18,794 school children under the food for education programme.
- **Child friendly spaces and psychosocial care:** 7 new children were supported through interim care centres. 92 children were referred for family tracing services and out of those children 16 children were successfully reunified with their families following assessments and verifications. There were 805 children registered and reached with Child Friendly Space services. A total of 334 children formerly associated with armed groups were enrolled for education services in both primary and secondary schools while 92 were registered for vocational training.
- **Behavioral change messages:** 16,114 individuals were reached with the gender-based violence and protection awareness activities



WATER, SANITATION & HYGIENE

- **Safe drinking water:** 112,832 internally displaced persons, refugees and host communities received safe drinking water at an average of 16L/person/day.
- **Infrastructure support:** A total of 92 household latrines; 52 communal latrines and 12 institutional were constructed in Upper Nile, benefitting 2,144 people.



NFI NON FOOD ITEMS

- **Non-food items:** 549 people in Western Equatoria received assorted kits which contained- plastic sheets, kitchen utensils and mosquito nets.



HEALTH & NUTRITION

- **Health consultations:** 78,856 community members received health consultation, care and treatment from health facilities supported under UNICEF and Health Pooled Fund World Vision.
- **Nutrition:** A total of 68,989 children under five and pregnant and lactating women were screened during the reporting period and 3,651 admitted for treatment of malnutrition.



1,433,127
people reached since January 2018



662,011
children reached since January 2018

Response achievements

Reporting period MAY 01 - MAY 30, 2018



274,263
people reached with food security and livelihoods



145,356
children reached with food security and livelihoods



78,856
people reached with health services



112,832
people reached with clean water and sanitation



68,989
people reached with nutrition services



16,130
people reached protection services



15,613
people reached with education



549
people reached with shelter and NFI



565,584
people reached with life-saving humanitarian assistance in May 2018



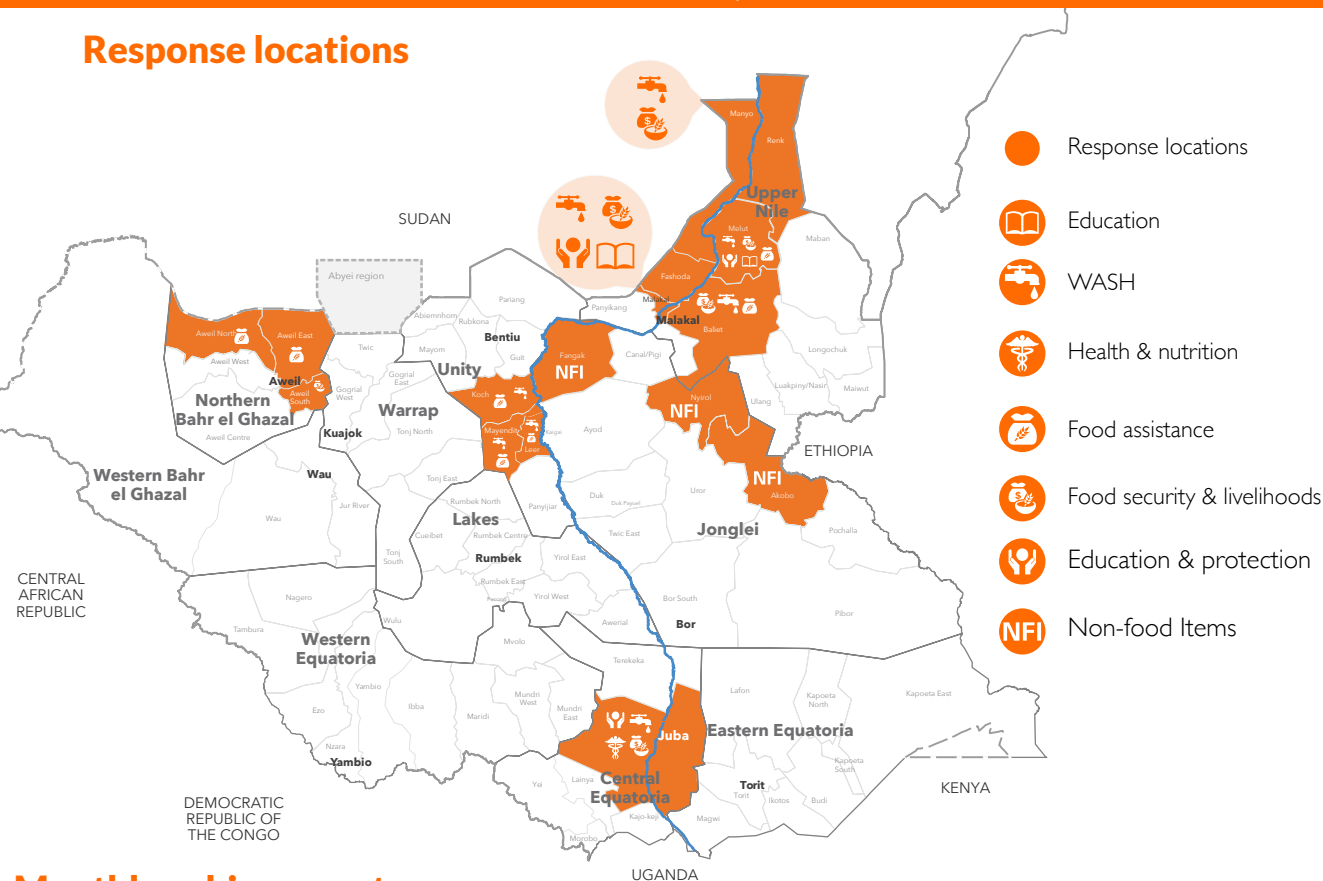
317,102
children reached with life-saving humanitarian assistance in May 2018

SOUTH SUDAN

EAST AFRICA HUNGER CRISIS SITUATION REPORT | MAY 1 - MAY 31 2018



Response locations



Primary contact information

Mesfin Loha
National Director
mesfin_loha@wvi.org
Skype: mesloha

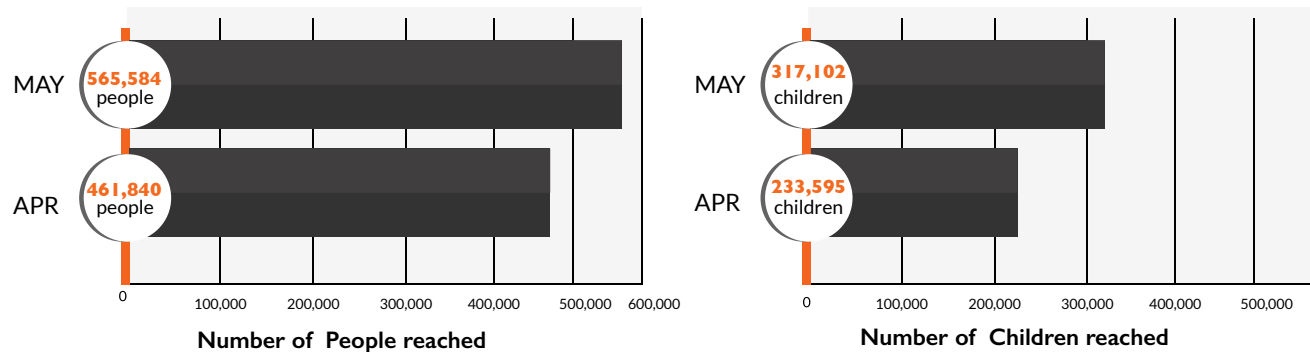
Lilian Mumbi
Operations Director
Lilian_mumbi@wvi.org
skype: l.mumbi

Martin Omoro
Acting Quality Assurance Manager
Martin_omoro@wvi.org
skype: martinomoro

National office donors & partners



Monthly achievements



The boundaries and names shown and the designations used on these maps do not imply official endorsement or acceptance by the World Vision International

Creation date: 19 June 2018

Sources: UNOCHA, WFP, UNOPS