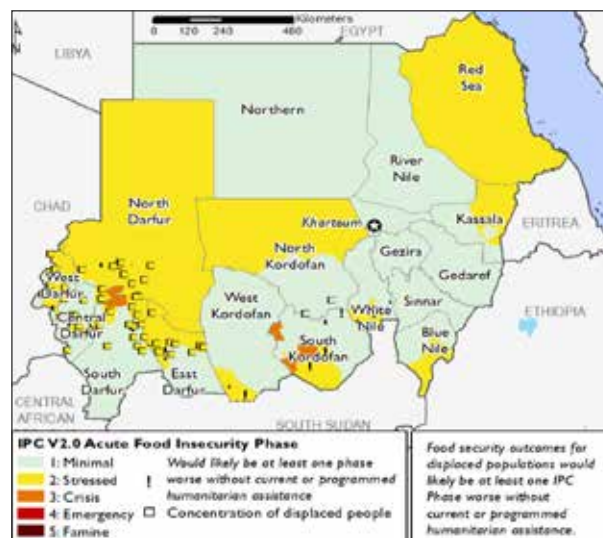


### Key messages

- **Overall humanitarian situation:** Sudan remains one of the largest protracted crises in eastern Africa with an estimated 3.2 million displaced people (of these 1.2 million are refugees, at least 762,900 from South Sudan).
- **New displacements:** New arrivals from the Jebel Marra mountains in western Sudan, have contributed to a sustained increase in the number of people in need of assistance particularly in camps for internally displaced persons in South Darfur.
- **Chikungunya virus outbreak:** According to the World Health Organisation (WHO) there were a total of 13,978 confirmed cases of Chikungunya virus, (a virus spread by same kinds of mosquitoes that spread zika and dengue fever), across six of Sudan's 18 states between May 31 and October 2018. Kassala state in eastern Sudan bore the greatest burden with a 95% caseload. Approximately 7% of the reported cases were children under five years old.
- **Heavy rains:** The heavy rains experienced in Blue Nile state throughout September left some parts inaccessible, largely hampering delivery of assistance to people in need, particularly in remote places. The worst affected are Bau, Giessan and Kurmuk localities.
- **Malaria:** The number of malaria and typhoid caseloads decreased by 14.2% and 5.5% respectively, in the last week of September.
- **EU envoy calls for improvement of services for refugees:** The EU ambassador to Sudan Jean-Michel Dumond visited El Radoom and Bielel localities in South Darfur state to assess the situation of the South Sudanese refugees. The envoy emphasised the need to improve humanitarian services for South Sudanese refugees, particularly highlighting the sectors of health and education.

### Projected food security outlook through January 2019



SOURCE: RELIEF WEB

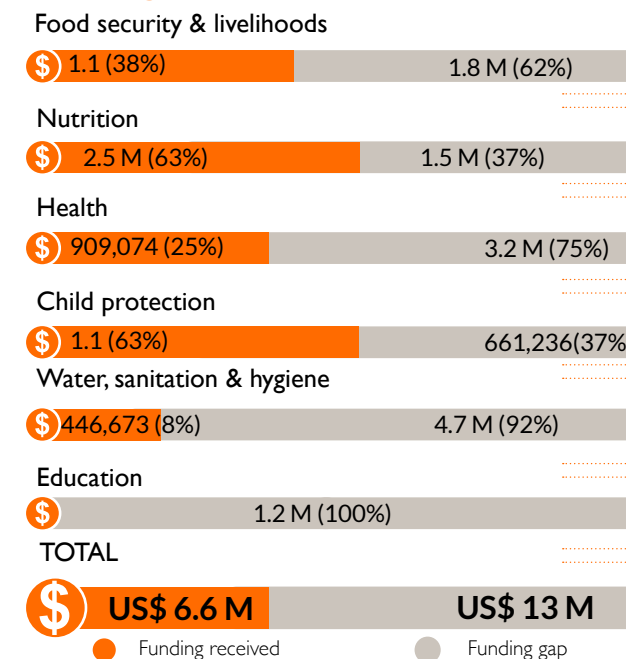
### Gaps and needs

- According to the Humanitarian Need Overview, at least 2.5 million people in East Darfur; Blue Nile and South Kordofan lack or have limited access to basic services, most critical is clean water, sanitation, and healthcare services.
- Livelihoods opportunities are particularly important to assist the most vulnerable families without a means of earning income be able to meet their household needs in the long term. The high cost of commodities has further increased their vulnerabilities.
- Sustained funding will therefore help the most vulnerable in some of the areas with the greatest need such as Alfirmoud, Abukarinka, Adila and Yassin in East Darfur State.

### Humanitarian needs



### Funding needs



\*All financial figures in US\$

### Response highlights



#### FOOD SECURITY & LIVELIHOODS

- 125,646 internally displaced persons in Nyala and Kass camps (including 36,221 new arrivals in Otash and Dereige camps) in South Darfur, received food assistance meant to last a family for one month.
- 13,591 IDPs in Dereige camps in South Darfur state received support in the form of cash assistance.
- 1,686 IDPs and host community members from five villages in Kass locality, South Darfur and Kurmuk, Giessan localities in Blue Nile, received vaccinated goats aimed at boosting households livelihood assets and improve their income opportunities. The families also received basic husbandry training.
- World Vision facilitated the establishment of 18 village savings and loan associations (VSLAs) comprising of 10 members each across six villages in Bau locality, Blue Nile.



#### EDUCATION & PROTECTION

- 73,752 children in 16 schools in South Darfur were provided with a mid-day meal. World Vision is working with the schools to promote vegetable gardens.
- 1,315 children attended World Vision Child Friendly Space centres in South Darfur and Blue Nile where they enjoyed learning and recreational activities.
- 585 refugee and IDP children in South Darfur were supported with school fees, while another 730 children in Baw locality, Blue Nile had their learning experience boosted after World Vision provided educational materials such as exercise books, pens, chalks as well as furniture.
- 421 people (including 80 religious leaders) in Katyla and Edalfursan, South Darfur participated in community peace forums as well as gender-based violence.



#### HEALTH & NUTRITION

- 35,274 people received free medical consultation and primary health care services provided at the 23 clinics that World Vision supports South Darfur, Blue Nile and East Darfur. World Vision distributed anti-malarial drugs and testing kits to 18 health facilities in South Darfur, to ensure that health facilities were adequately stocked given high malaria prevalence post the rains.
- To detect ensure early signs of malnutrition and provide early treatment, staff and volunteers conducted mass screening of 18,125 children. 1,451 of these children were admitted to the Outpatient Therapeutic Programmes (OTP) centres and stabilisation centres in South Darfur and Blue Nile. 980 children were discharged in the same period after successful rehabilitation.
- 15,730 were reached with health education campaigns and messages conducted at the health facilities.
- In South Darfur 1,205 role model mothers referred to as Lead Mothers in Kubum, Mershing, Alsalam and Rehid alberdi localities, South Darfur were trained on Community Complementary Feeding and Learning Sessions (CCFLS).

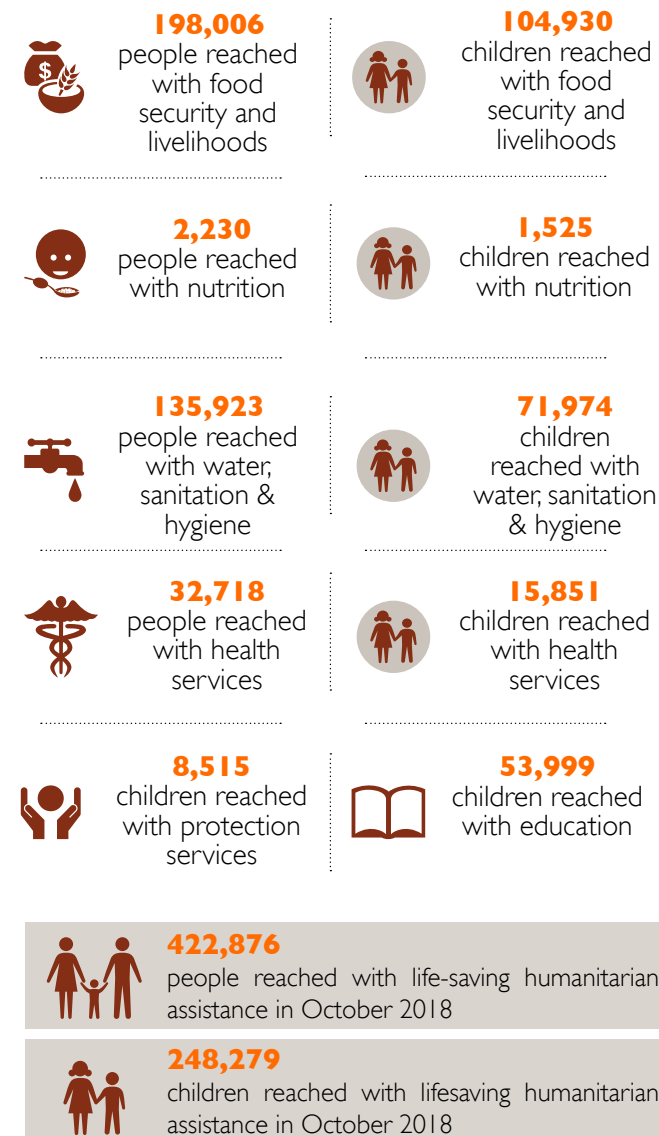


#### WATER, SANITATION & HYGIENE

- World Vision supported the construction of boreholes, rehabilitation of hand pumps, and installation of solar-powered systems that enabled 92,000 IDPs and members of host community in Kass, Otash, Mershing, Nitaga, Belel and Kubum, in South Darfur to access clean water.
- 21,000 IDPs in Otash and Mershing IDP camps and South Sudanese refugees in Buram refugee camp, East Darfur have access to sanitation services.
- World Vision conducted weekly clean-up campaigns that also included improving waste management, reaching an estimated 15,000 people in Kass locality of South Darfur state.

### Response achievements

Reporting period OCTOBER 01 - OCTOBER 31, 2018

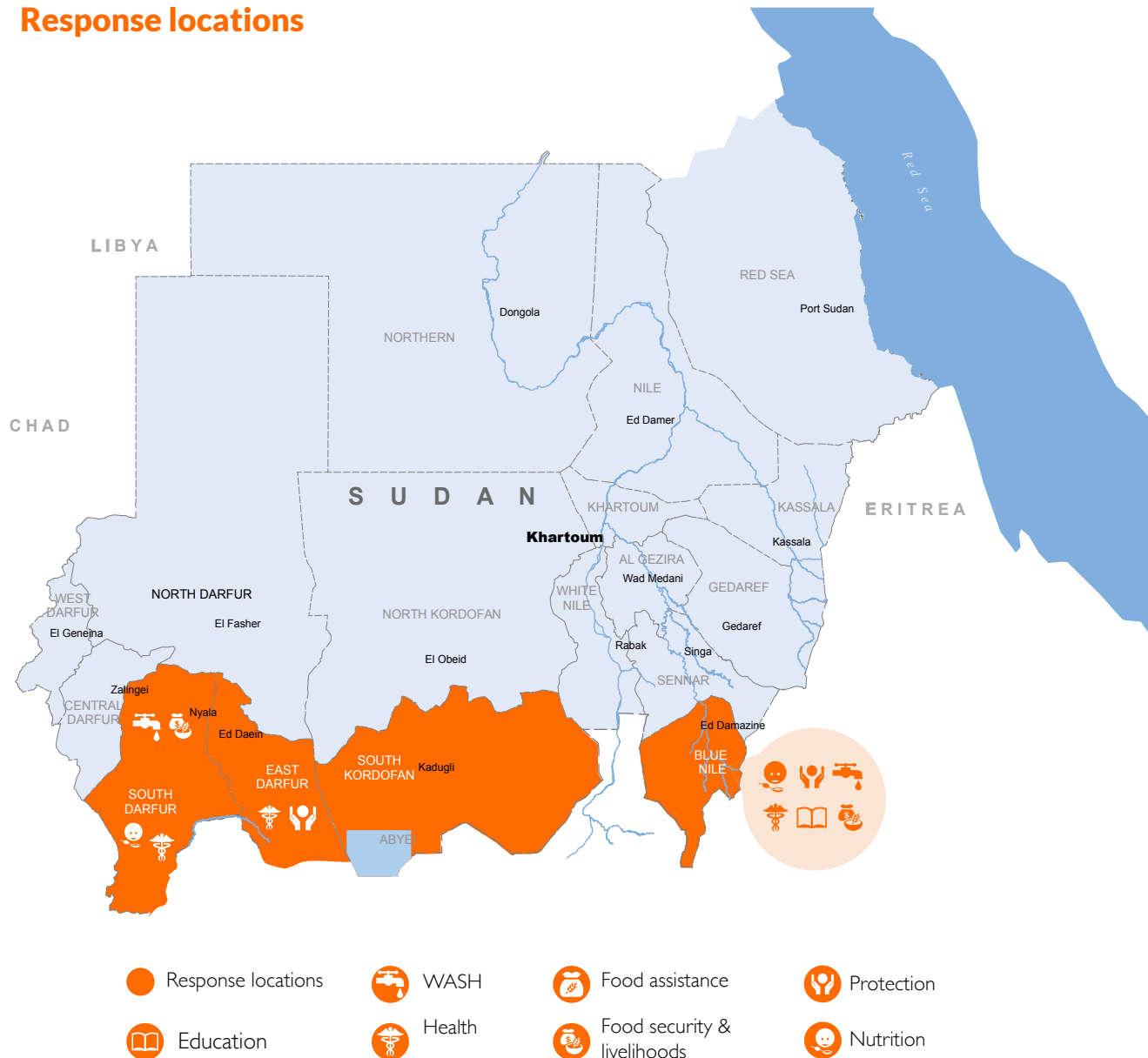


# SUDAN

EAST AFRICA CHILDREN CRISIS SITUATION REPORT | OCTOBER 1 - OCTOBER 31 2018



## Response locations



## Primary contact information

**Vince Edwards**  
Country Program Director  
Vince\_Edwards@wvi.org  
skype: vedwards1

**Jimmy Nadapdap**  
Operations Director  
Jimmy\_Nadapdap@wvi.org  
skype: jimmy nadapdap

**Abuzerr Abdalla**  
Associate Director  
Abuzerr\_Abdalla@wvi.org  
skype: abuzerr.abdalla

## National office donors & partners



With donations from World Vision Support Offices: Korea & US.

The boundaries and names shown and the designations used on these maps do not imply official endorsement or acceptance by the World Vision International

Creation date: 10 November 2018

Sources: TRUST.ORG, UNOCHA, WFP, IPC, FEWS.NET, RELIEFWEB.