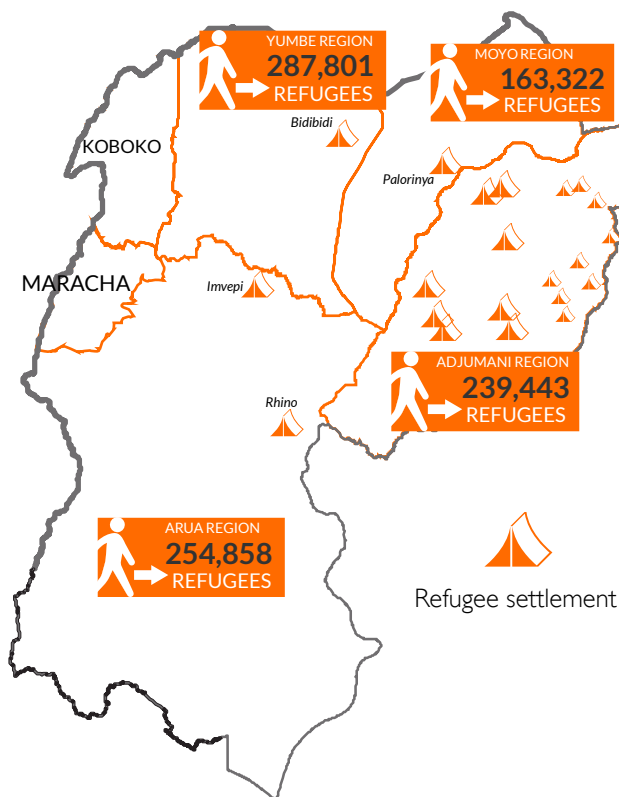


Key messages

- Every day, refugees fleeing South Sudan arrive at Uganda's borders, escaping violent conflict, a deteriorating economic situation and lack of basic services. Since 2013, more than 1 million South Sudanese refugees have arrived in Uganda and 85 per cent of these refugees are women and children.
- South Sudanese children fled into Uganda after being exposed to intense levels of violence, malnutrition, exploitation and other forms of abuse. The effect of this exposure needs to be mitigated.
- Hostility between the host community and refugees has caused security incidents and continues to rise. There is an urgent need for more social cohesion projects to bridge the gap between refugees and the surrounding Ugandan communities.
- The majority of refugees continue to rely on food assistance, although a growing recognition of the need to assist refugees to engage in activities that help them earn income to be more self-sustainable. Approaches that emphasises partnerships with local businesses, reductions of subsidies and demand-driven, market-based, livelihoods support are needed.
- World Vision has embraced refugees running from South Sudan's violent conflict and arriving in Uganda since 2014. The organization's humanitarian response assists people moments after they cross the border and as they adjust to life as a refugee in Uganda. Currently, World Vision's response serves more than 500,000 refugees and host community members every month and aims to expand its programming to meet the needs.

Number of refugees in Uganda

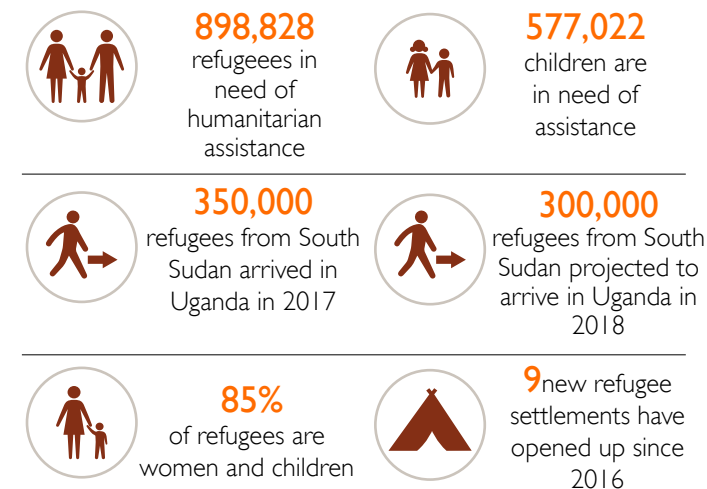
Source: UNHCR, Regional refugee response plan, Jan-Dec 2018



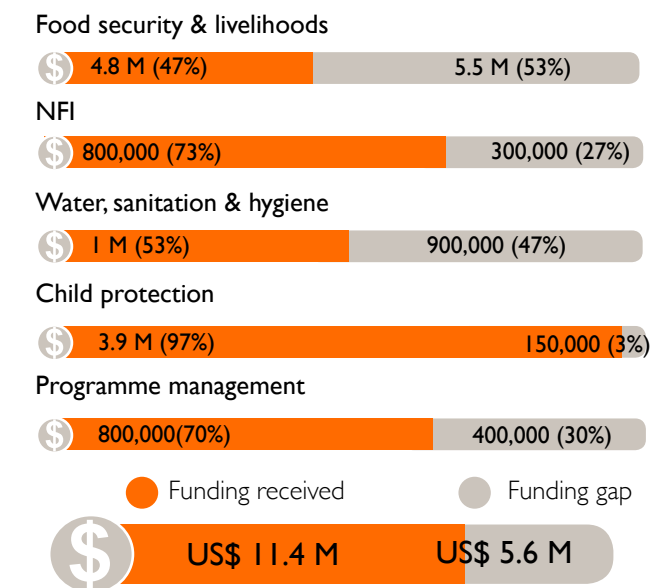
Gaps and needs

- The food distribution team are challenged by the poor infrastructure needed for effective delivery of food. Both road and sanitary facilities need upgrading, affecting the protection and dignity of both World Vision staff and the refugees during distributions.

Humanitarian needs



Funding needs



*All financial figures in US\$

Response highlights



WATER, SANITATION & HYGIENE

- Conducted water quality testing at 37 water sources within Dongo East and West zones benefitting a total of 63,000 people.
- Built the capacity of 20 children in hygiene and sanitation practices at the St. Mary's CFS in Omugo. Built the capacity of 11 teachers on hygiene and sanitation at the CFS.
- World Vision completed construction of a motorized solar powered water system at Palorinya refugee settlement. The system is providing 4,500 litres of clean drinking water every hour to over 15,000 people.



FOOD ASSISTANCE

- A total of 8,848.3MT of food was distributed to 532,455 people in Arua, Yumbe and Moyo refugee settlements. \$85,155.6 was distributed as cash assistance to 9,778 people.



NON - FOOD ITEMS

- The total population served was 47,640 individuals amounting to 18,681 households.
- World Vision in partnership with UNHCR, continues to distribute core relief items to all South Sudanese new arrivals in Omugo as well as the mandatory soap and sanitary kit in Bidibidi and Imvepi from South Sudan. Items distributed include household kits (kitchen sets, Blankets, soap, plastic basin, jerricans, sleeping mat, mosquito nets, and solar light), shelter kit (machete, hoes, sickle, rope, plastic sheet, poles) and sanitary kit (soap, sanitary pads and underwear) based on standard household distribution scale.



FOOD SECURITY AND LIVELIHOODS

- In a bid to increase household food production, 23,068 vulnerable community members (14,428 refugees and 8,640 host communities) were supported with improved agricultural technologies (oxen, ox-ploughs, goats, tools, poultry, improved seeds). The project also supported 200 persons with special needs with USD \$18,355 as unconditional cash transfer to support basic needs of the targeted beneficiaries.



CHILD PROTECTION

- 71,099 children were directly reached through child protection interventions. This includes child friendly spaces, early childhood development, peacebuilding, case management, End-child-marriage project and strengthening community based child protection systems. 53,921 children are enrolled for psychosocial support through our 37 child friendly spaces with a daily average attendance of 20,619.



RECEPTION CENTRE MANAGEMENT

- The reception centres received a total of 2,998 individuals, amounting to 1204 households, 493 of whom are PSNs. World Vision, in partnership with UNHCR and Office of the Prime Minister, continues to manage the refugee reception centres in Bidibidi, Ariwa (in Yumbe), Imvepi and Omugo (in Arua district). At the reception centre in Imvepi and Omugo, World Vision provides hot meals to new arrivals, overnight shelter facilities, hygiene and sanitation facilities, and temporal foster care for unaccompanied children plus referral of cases to various partners.

Response achievements

Reporting period MAY 01- MAY 31, 2018



532,455
people reached
with food
assistance



71,099
children reached
through
child protection
programming



63,000
people reached
with clean water
and sanitation



47,640
people reached
with Shelter NFI/
Reception centre



23,068
people reached
with resilience &
livelihoods



18,233
people reached
with education
activities



9,788
people reached
through food
distribution and cash
based programming



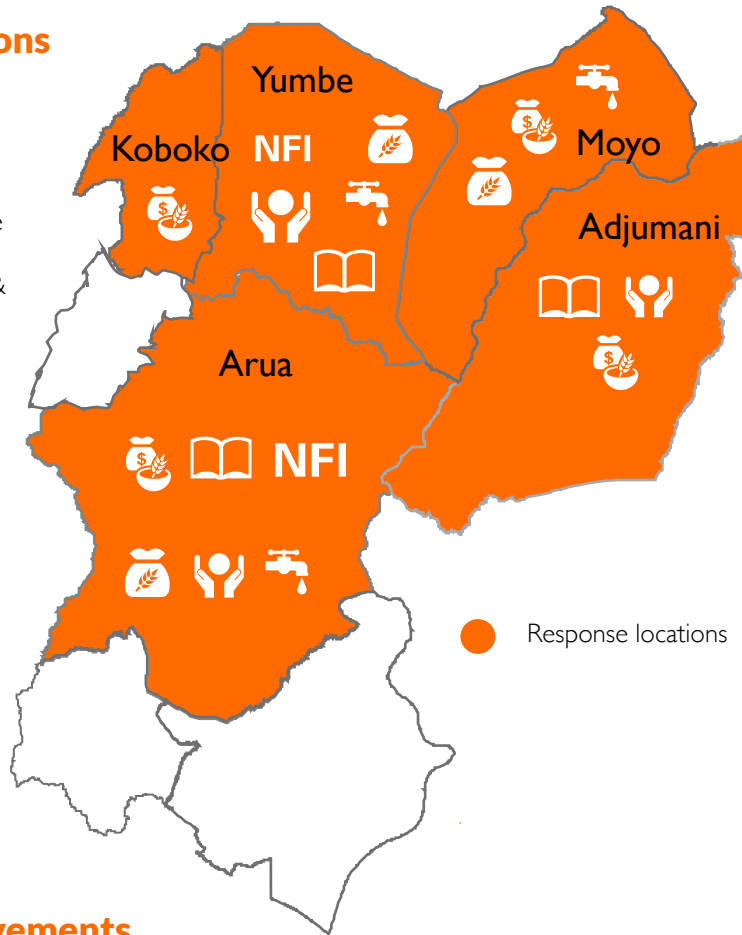
550,873
people reached with life-saving humanitarian
assistance in May 2018



346,873
children reached with life-saving
humanitarian assistance in May 2018

Response locations

- Education
- Food assistance
- Food security & livelihoods
- Protection
- WASH
- Health & nutrition



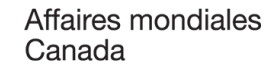
Primary contact information

Tinah Mukunda
Interim National Director
World Vision Uganda
Tinah_Mukunda@wvi.org

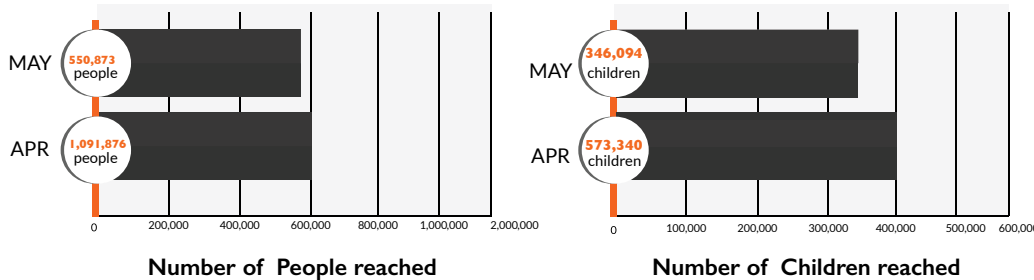
Enid Kabasinguzi
Response Director
West Nile Refugee Response
EnidK_Ocaya@wvi.org

Moses Mukitale
Communications Coordinator
West Nile Refugee Response
Moses_Mukitale@wvi.org

National office donors & partners



Monthly achievements



With donations from private individuals in US, Korea, Australia, Hong Kong, Canada, UK, New Zealand, Taiwan, Japan, Uganda