

# WORLD VISION UGANDA WEST NILE REFUGEE RESPONSE SITUATION REPORT 14

11 SEPTEMBER 2017

World Vision

## SITUATION HIGHLIGHTS

Reporting period  
11 August-1 September 2017



**1 million+**

South Sudan refugees in  
Uganda



**344,000**

South Sudan new arrivals from  
01 January - 17 August 2017



**63%**

of South Sudan refugees in  
Uganda are children



**86%**

of South Sudan refugees in  
Uganda are women and children



**1.3 MILLION**

total number of refugees  
in Uganda

Source: UNHCR



## KEY HIGHLIGHTS

- **1 million South Sudanese refugees:** Uganda currently hosts over 1 million South Sudanese refugees in the West Nile region. The refugees are fleeing from conflict, drought and hunger. More South Sudanese people will continue to flee until the root causes of the conflict are addressed. An inclusive and sustainable solution is the only way forward to achieve lasting peace in South Sudan.
- **Children's crisis:** On average about 650 refugees arrive in Uganda per day, the majority who are children. In recent weeks, 63 per cent of all new arrivals are below the age of 18. Many children have witnessed violence in their homelands and the conflict they are escaping is forcing many to arrive without the accompaniment of an adult, separated from their families or with special needs. To help children adjust to life in Uganda, community based child protection systems and safety structures needs to be strengthened.
- **A city in the making:** The most recent refugee settlement opened at the beginning of August and already has more than 9,000 refugees. Refugee families are given land to clear and set up their homes Omugo. World Vision is the lead agency in reception centre management and food distribution. The organization is also a co-lead agency in child protection and is providing families with shelter, household and sanitary items. Still, as the numbers grow, more support is needed to ensure the needs of the new arrivals are adequately met.
- **Foster families need additional support:** The foster families that compassionately take care of unaccompanied and separated children need further assistance to ensure they can adequately take care of the children they look after. There is a need for families to have access to cash grants and economic development skills.

## HUMANITARIAN SITUATION OVERVIEW

- **Enabling access to clean water:** More than 22,500 people in Adjumani are now benefiting from a solar-powered piped water scheme that was officially opened on 22 August. The project is funded by US Bureau For Population and Refugee Migration (BPRM) and provides each user with 15 litres of water per day. Additional water scheme projects are being planned in Bidibidi in the months to come.

- **Funding shortfalls hampering overall response:** To adequately assist, the UN has appealed for US \$883.5 million in 2017 but only 28 per cent of the amount has been received, leaving a funding shortfall of \$633.4 million<sup>1</sup>. On 17 August, the UNHCR announced that the 1 millionth South Sudanese refugee had arrived in Uganda. The result of the funding shortfalls, the UNHCR said in a statement is "significantly impacting the abilities to deliver life-saving aid and key basic services. In May, the World Food Programme were forced to cut cereal rations for refugees. Across settlements in northern Uganda, health clinics are being forced to provide vital medical care with too few doctors, healthcare workers and medicines. Schooling, meanwhile, is also being impacted. Class sizes often exceed 200 pupils, with some lessons held in the open air. Many refugee children are dropping out of education as the nearest schools are too far away for them to easily access<sup>2</sup>." World Vision continues to lobby for additional funding to meet refugees' needs.
- **Environmental concerns:** With both the host communities and refugees reliant on firewood for cooking, there is mounting competition and pressure on this shared resource. Massive tree cutting for construction and the development of farmland is also putting pressure on land. An environmental impact assessment is needed to mitigate unnecessary environmental degradation. Meanwhile, conservation measures should be put in place such as the promotion of alternative energy sources for cooking fuel, promoting Farmer Managed Natural Regeneration practices, afforestation and reforestation activities (fast growing trees), and promotion of improved stoves.
- **Assistance for farmers:** Most farmers are only practicing subsistence agriculture, largely rain-fed. With the impact of climate change, the rains are sporadic and unreliable, making crop farming risky. Climate Smart solutions such as drought resistant varieties, water use efficient irrigation systems, and conservation agriculture, among others, are much needed to promote year-round crop farming.

<sup>1</sup> UNHCR (2017, August 7), South Sudan Situation 2017 funding update

<sup>2</sup> UNHCR (2017, August 17), South Sudan refugees pass 1 million mark, UNHCR renews call for help. Retrieved from

<http://www.unhcr.org/news/press/2017/8/599457a34/south-sudan-refugees-uganda-pass-1-million-mark-unhcr-renews-call-help.html>

## WHAT WORLD VISION IS DOING

reporting period 1 | August-1 September



### FOOD & CASH ASSISTANCE

- **Food assistance:** 368,353 refugees in Imvepi and Bidibidi settlements were reached during food distribution, as 63MTs of commodities including cereals, pulses, vegetable oil, corn soya blend and salt were dispersed.
- **High-energy biscuits:** In total, 7,793 new arrivals were greeted at Uganda's borders with High Energy Biscuits that provide protein and energy to people who have travelled long distances. During the time period under review, 16.7MTs of High Energy Biscuits distributed at border points in Koboko, Yumbe and Moyo districts.
- **Cash assistance:** 7,183 refugees in both Rhino and Lobule settlements benefitted from cash transfers totaling 115,777,000 UGX [\$32,191 US] supported by Post bank.



### WASH

- **Water quality testing:** 15,000 people from 3,000 households were reached during water quality testing.
- **Girls' hygiene:** 75 pupils from 5 schools were trained in menstrual hygiene management and reproductive health for adolescent groups.
- **Latrine construction:** 10 latrines for People with Special Needs (PSN) were completed during the reporting period.

## NFI NON-FOOD ITEMS

- **Core relief items:** 5,190 new arrivals in Omugo settlement received sanitary kits, shelter construction kits and household supplies.



### LIVELIHOOD

- **Cooking stoves:** A total of 5,872 rural wood stoves have been distributed in Imvepi Refugee Settlement benefitting 10,000 people with special needs (elderly, widowed, foster parent, child headed household and the disabled)
- **Savings group:** 1,140 members of 38 savings group were supported during regular monitoring and technical support visits.
- **Support to farmers:** Carried out five monitoring visits to farmers who received cassava cuttings, maize, sesame and groundnuts.



### CHILD PROTECTION

- **Case management:** 338 new cases were registered and provided the most appropriate support services. The children include 47 unaccompanied minors, 192 separated children and 99 other children at risk.
- **Child friendly spaces:** 15,152 children regularly attend child friendly spaces on average where they participate in structured play and receive emotional support.
- **Early childhood education:** 10,286 children regularly benefited from the Early Childhood Development sessions.
- **Peace clubs:** 1,349 peace club members participated in regular activities and sports competitions.
- **Strengthening community structures:** 800 people learned about child rights and protection issues during 5 community dialogue sessions. Interagency family tracing and reunification services were also supported.

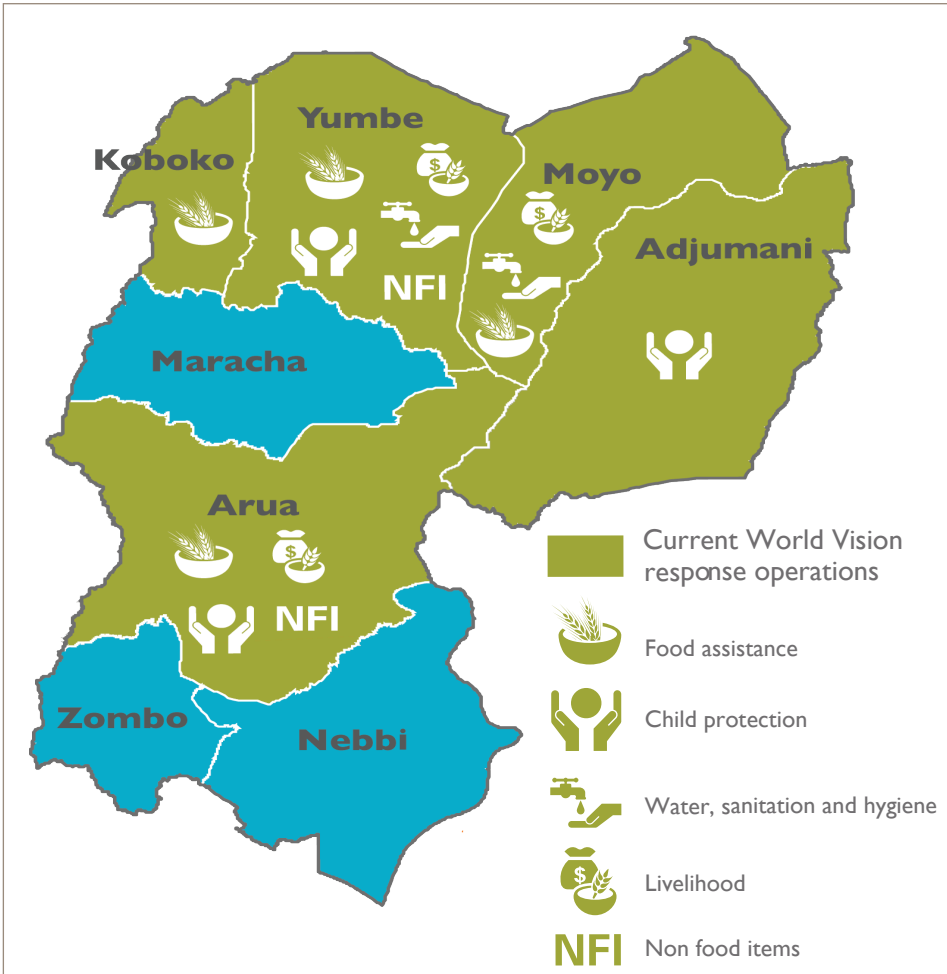


**1.6M** people including refugees and host communities targeted for assistance

**RESPONSE HIGHLIGHTS**

People reached during  
11 August-1 September 2017

**WORLD VISION AREAS OF OPERATION**




**368,353**  
total people reached with food assistance



**6,384**  
people reached with livelihood assistance

**NFI**  
**5,190**  
people reached with non-food items



**15,120**  
people reached with water, sanitation and hygiene services



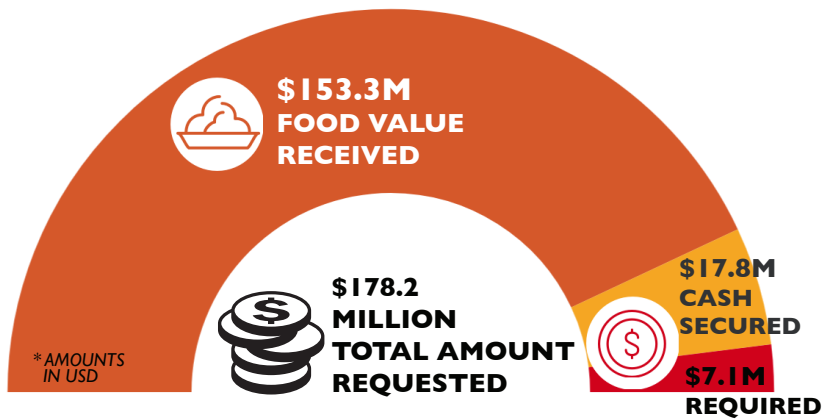
**25,808**  
children reached with protection services



12-year-old Majid escaped South Sudan's conflict on the week of 28 August.

He arrived at a refugee reception centre in Imvepi on a bus with many other refugees. He was greeted with a hot meal and a place to play inside a World Vision child protection tent.

## GAPS AND FUNDING REQUIREMENTS



## WORLD VISION UGANDA HUMANITARIAN DONORS AND PARTNERS:



Global Affairs  
Canada

Affaires mondiales  
Canada



MINISTRY FOR FOREIGN  
AFFAIRS OF FINLAND

World Vision 



## PRIMARY CONTACT INFORMATION

### Gilbert Kamanga

National Director

Email: Gilbert\_kamanga@wvi.org

Skype: mwembe1

### Benson Okabo

Operations Manager

Email: Benson\_Okabo@wvi.org

Skype: ogadben.2

### Paul Sitnam

Response Director

West Nile Refugee Response

Email: Paul\_Sitman@wvi.org

Skype: paulsitnam111