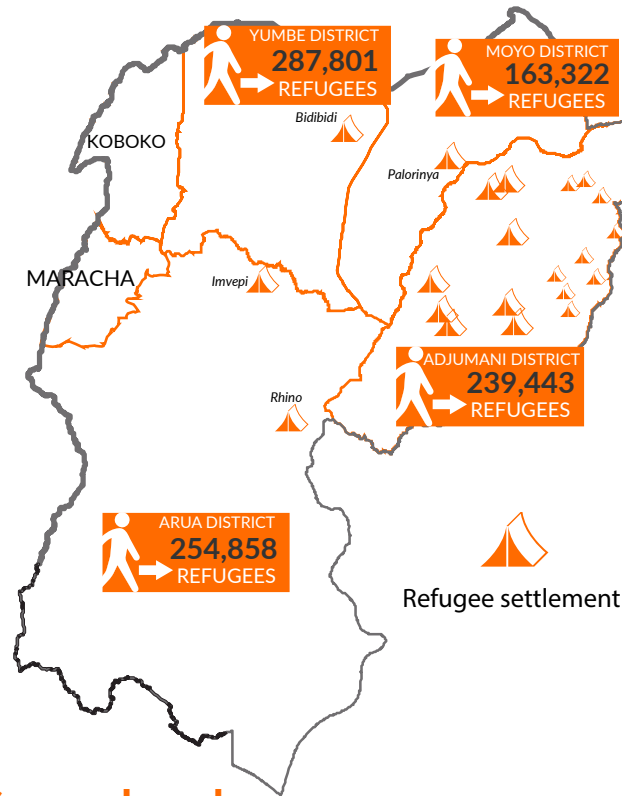


Key messages

- Uganda continues to receive new arrivals from South Sudan though the daily average arrival rate has gone down compared to the last 6 months. On average 100+ people are being received daily compared to 2,000+ that were being registered daily mid-2017. Children constitute 61 per cent of the refugees. The ongoing active conflict in South Sudan causes the continued influx. New arrivals also mention that they are crossing to Uganda so that their children can access good education and health care services.
- World Vision's longterm recovery programmes for refugees and host communities are ongoing. Programmes are geared towards empowering refugees and host communities to be self-reliant, mainly through boosting household incomes. In line with this, in April 2018, World Vision assisted 100 farmers' groups by distributing 200 bulls and 100 ox-ploughs to enable them to cultivate fields for growing crops. Additionally, goats have also been distributed to refugees and host communities in Omugo and Palorinya settlements.
- World Vision's two motorized water systems for refugees and host communities at Bidibidi refugee settlement are fully complete. More than 30,000 people are now receiving clean and safe drinking water from our systems.
- More than 1.3 Million South Sudanese are displaced in Uganda, the majority due to the ongoing conflict in South Sudan. The Ugandan government has kept its borders open despite severe funding shortfall. In 2018, the United Nations High Commissioner for Refugees Filippo Grandi launched a new funding appeal for US\$1.5 billion to support refugees fleeing the worsening humanitarian situation in South Sudan.

Number of refugees in Uganda

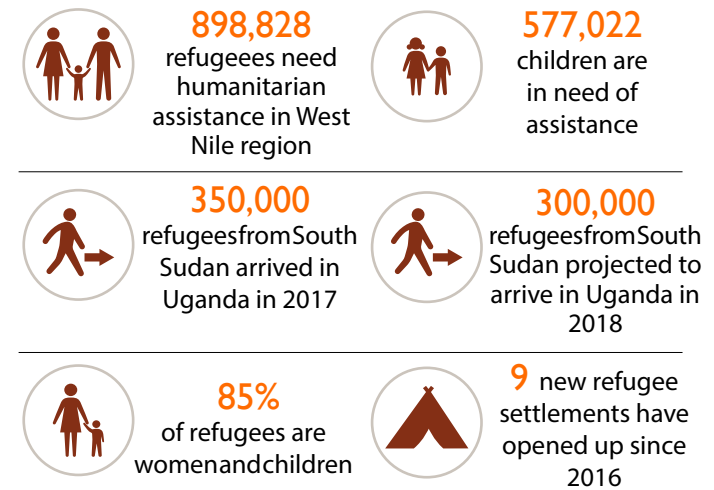
Source: UNHCR, Regional refugee response portal



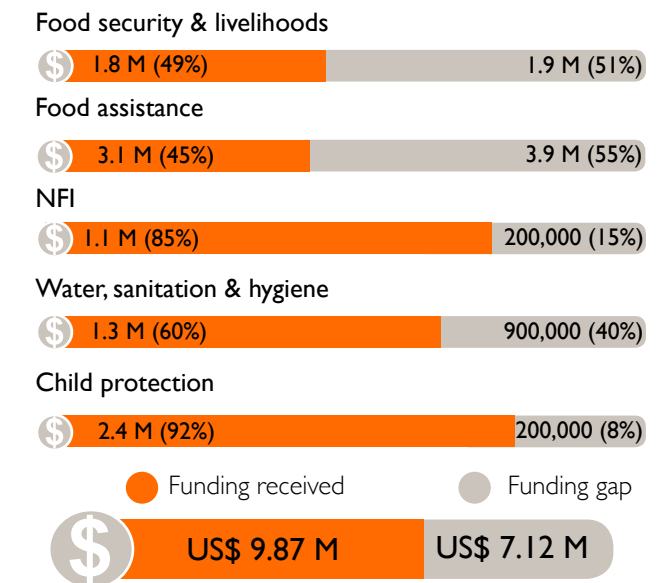
Gaps and needs

- The potential of refugee youth aged 14-24 remained largely untapped and is frequently overlooked. They are often unable to participate in decision making or harness their talents and energy. More inclusive approaches are needed for all activities targeting the youth.
- The need for livelihood support continues to surpass the available services.

Humanitarian needs



Funding needs



*All financial figures in US\$

Response highlights



EDUCATION AND PROTECTION

- **Child Friendly Spaces:** 53,921 children are enrolled for psychosocial support at our 37 child friendly spaces, with a daily average attendance of 20,619 children.
- **Early childhood education:** 13,927 children ages 3 to 6 attended early childhood development activities.
- **Peace clubs:** 2,711 children participated in 72 peace club activities.
- **Case management:** Case workers are supporting 16,033 children - unaccompanied children (3,594), separated children (9,452) and children at risk (2,987) - through regular home visits, the best interest determination processes, and alternative care arrangements.
- **Child marriage:** 16,366 adolescent girls have been identified as at risk of early marriage. 1,506 community based structures are actively engaging adolescents to prevent, report and respond to violence against children.
- **Education for out of school children:** In Bidibidi, the community is learning about accelerated learning programmes which will be implemented at 4 child friendly spaces.



CORE RELIEF ITEMS

- **Assisting new arrivals:** 16,800 families were provided kitchen sets, construction materials, sanitary wares, soap, mosquito nets, basins, jerrycans, blankets, sleeping mats, hoes, dignity kits for women of reproductive age etc,



FOOD ASSISTANCE

- **Food distribution:** A total of 10,765MT of food was distributed to 668,053 people in Arua, Yumbe and Moyo refugee settlements.
- **Cash based programming:** A total of \$173,746.07 was given out as cash assistance to 19,925 people.



WATER, SANITATION & HYGIENE

- **New water systems:** Two water systems for refugees and host communities in Bidibidi were completed, providing over 30,000 people with clean drinking water.
- **Training:** 17 caregivers learned to operate and maintain WASH facilities. 200 mothers and caregivers learned good hygiene practices.



FOOD SECURITY AND LIVELIHOODS

- **Business start-up capital:** US \$48,000 was distributed to 298 families – those with special needs or foster families.
- **Helping farmers:** To increase agricultural production, 14,798 refugees and 9,513 host community members were provided livestock (oxen or goats) or farm equipment (ox-ploughs and tools).
- **Savings group:** 385 saving and loans groups supported and mentored, enabling members to start and expand small businesses.

Response achievements

Reporting period April 01-April 30, 2018



687,978
people reached through food distribution and cash based programming



69,793
children reached through child protection programming



13,927
children reached with education activities



31,220
people reached with clean water and sanitation



24,311
people reached with resilience & livelihoods



97,170
people received essential relief items



728,000+
people reached with life-saving humanitarian assistance in April 2018



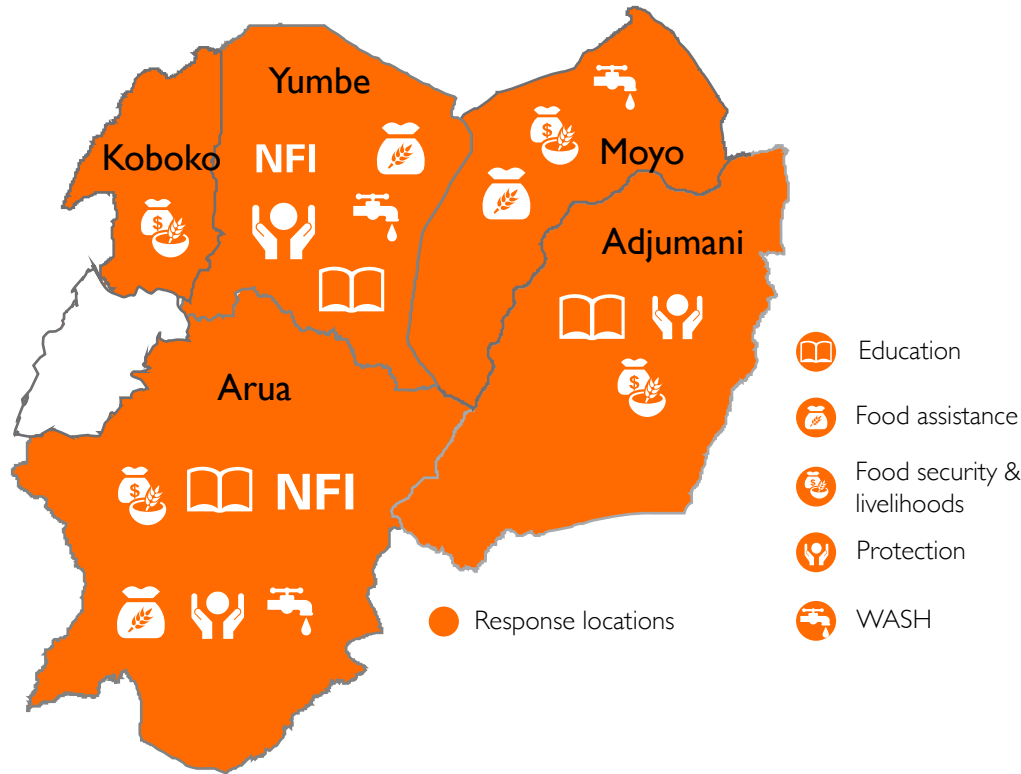
381,000+
children reached with life-saving humanitarian assistance in April 2018

UGANDA

WEST NILE REFUGEE RESPONSE SITUATION REPORT | APR 01-APR 30 2018



Response locations



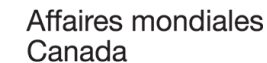
Primary contact information

Tinah Mukunda
Interim National Director
World Vision Uganda
Kampala, Uganda
Email: tinah_mukunda@wvi.org

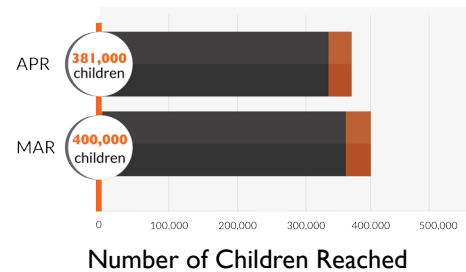
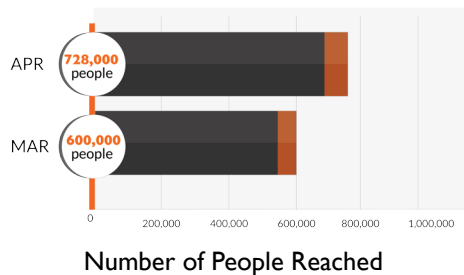
Jennifer Neelsen
Response Director
West Nile Refugee Response
World Vision Uganda
Email: jennifer_neelsen@wvi.org

Moses Mukitale
Communications Coordinator
West Nile Refugee Response
World Vision Uganda
Email: moses_mukitale@wvi.org

National office donors & partners



Monthly achievements



With generous contributions from private individuals in the United States, Korea, Australia, Hong Kong, Canada, the United Kingdom, New Zealand, Taiwan, Japan and Uganda - through World Vision's respective offices.

The boundaries and names shown and the designations used on these maps do not imply official endorsement or acceptance by the World Vision International

Creation date: 10 May 2018

Sources: World Vision, UNHCR, Office of the Prime Minister - Uganda government, UNICEF