

Uganda - Situation Report



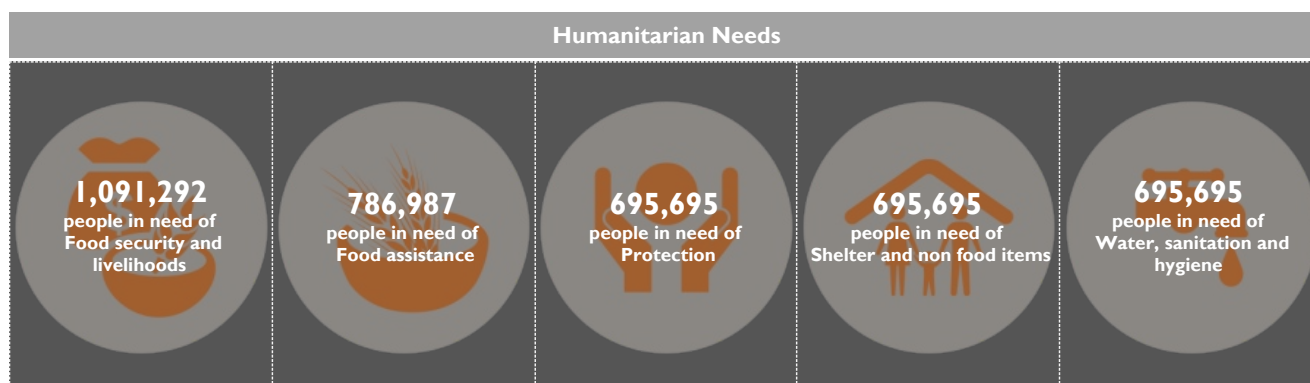
Country
Uganda

Year
2019

Month
January

Key messages

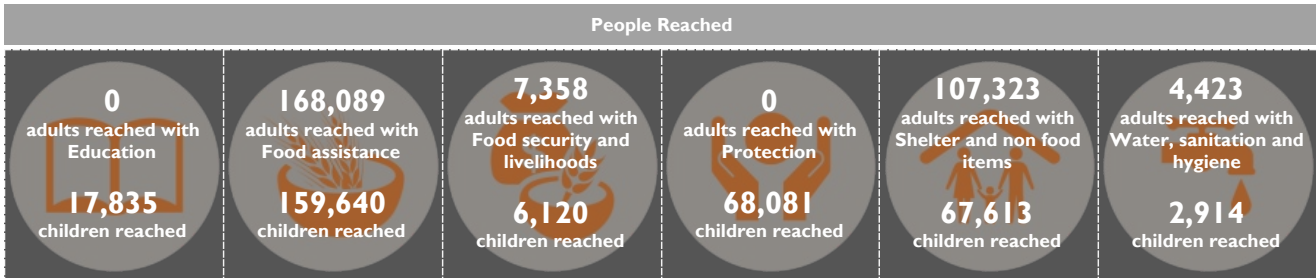
- **Continued Influx:** World Vision continues to positively respond to the DRC refugees who are fleeing violent conflicts and in the month of January, 2,354 new arrivals majority of whom are women and children were settled in Kyaka and Kyangwali. West Nile received 1,026 new arrivals from South Sudan who have been resettled in Omugo, an extension of Rhino camp.
- **Skills for life:** DRC Refugees and host communities have graciously embraced vocational skills training and attachment to local artisans introduced by World Vision as a complementary activity to Food and Cash assistance.
- **From dependency to self-reliance:** More South Sudan refugees are embracing income generating activities like running small enterprises and restaurants to boost their household incomes. Many youth out of school still remain redundant without opportunities to engage in productive livelihood activities and require assistance to enroll in vocational training to make them competitive in the job market.
- **Funding:** World Vision is grateful for the sustained support of our donors and partners who give to the work of World Vision and calls upon donors and other willing partners to prioritize long term funding as it transitions its response to focus on activities that empower refugees to become self-reliant.



Gaps and needs

- **Increased Vulnerability:** For refugee households, the highest proportion of households that were classified as People in Need (PINs) was found in the Midwest (96%), with the Southwest (95%) and West Nile (87%). Districts with the highest proportions of refugees that were classified as PINs include Hoima, Kyegegwa, and Moyo, where more than 95% of households were PIN classified
- **Only 1 out of 10 children can read and comprehend in a school language of instruction:** World vision conducted a baseline survey that showed that children are at risk of losing their future potential. The report notes that education support is currently underfunded and classrooms are overcrowded hence limiting the ability of refugee children to learn.
- **Only 19% of caregivers are able to provide for their children:** Children are at risk of malnutrition if World Vision and other actors do not support sustainable livelihood opportunities at household level. According to WFP policy, Refugees who have stayed for more than three years are supposed to have their rations cut into half. This implies interventions for boosting livelihoods is seriously required

What World Vision is doing



Shelter and non-food items

- 107,323 South Sudanese refugees in Omugo, Imvepi and Bidibidi settlements were provided with essential relief items.
- Reception Centre Management: 1036 new arrivals were received at the reception centres managed by World Vision. Among these new arrivals, 33 were classified as People with Special Needs. World Vision manages the reception centres in Omugo, Imvepi and Ocea refugee settlements in Arua district, Bidibidi and Ariwa in Yumbe district in partnership with the UN Refugee Agency (UNHCR) and Office of the Prime Minister (OPM). World Vision provides new arrivals with hot meals, overnight shelter facilities, hygiene and sanitation facilities, as well as providing temporary foster care to unaccompanied children and thereafter referring these cases to various partners for further assistance.



Food security and livelihoods

- 13,478 refugees and members of the host community benefited from improved farming technologies, savings and loan associations as well as cash-based assistance to help improve resilience at household level.
- 210 youths (male and female) have been identified and enrolled for training in various vocational skills. 121 in vocational school and 89 youths attached to local artisans. This skill enhancement is envisaged to increase the level of employability of the youth, women and girls as well as increasing household income and promoting resilience.



Protection

- Child Protection: 68,081 children accessed protection services through education and life skills training at the 42 Child Friendly Spaces (CFS), including peace building initiatives. In December,



Water, sanitation and hygiene

- World Vision conducted hygiene and sanitation awareness training for 7,334 children and teachers In schools, Child Friendly Spaces and reception centres.

GAPS AND FUNDING REQUIREMENTS

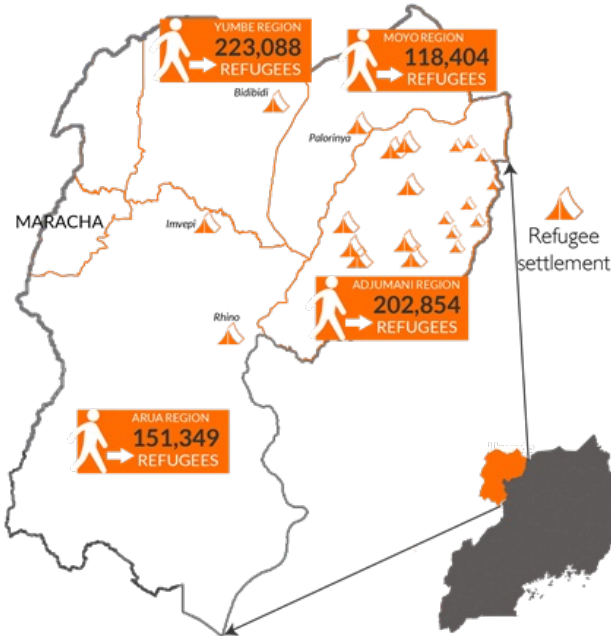
World Vision Uganda is requesting **US\$ 15,000,000** to expand its response activities. So far, it has received **US\$ 180,000** and is requesting an additional **US\$ 14,820,000** to close the gap and reach more people in need.

Uganda - Situation Report



Number of refugees in Uganda

Source: UNHCR, Regional Refugee Response Plan, January - December 2018



South West Uganda Response



The boundaries and names shown and the designations used on these maps do not imply official endorsement or acceptance by the World Vision International

Sources: FEWS.NET, UNICEF, UNOCHA, WHO, World Vision, UNHCR, Office of the Prime Minister, Uganda government

Donors and partners



MINISTRY FOR FOREIGN AFFAIRS OF FINLAND



GOVERNMENT OF UGANDA



Empowered lives. Resilient nations.



Primary contact information

Derrick Kyatuka
Communications Officer
derrick_kyatuka@wvi.org

Jason Evans
National Director
jason_evans@wvi.org

Jennifer Neelsen
Response Director
jennifer_neelsen@wvi.org

Moses Odur
HEA manager
moses_ongom@wvi.org